

# E-CONNECTIVITY FOR RURAL AMERICA

## Measures of Digital Distress<sup>1</sup>

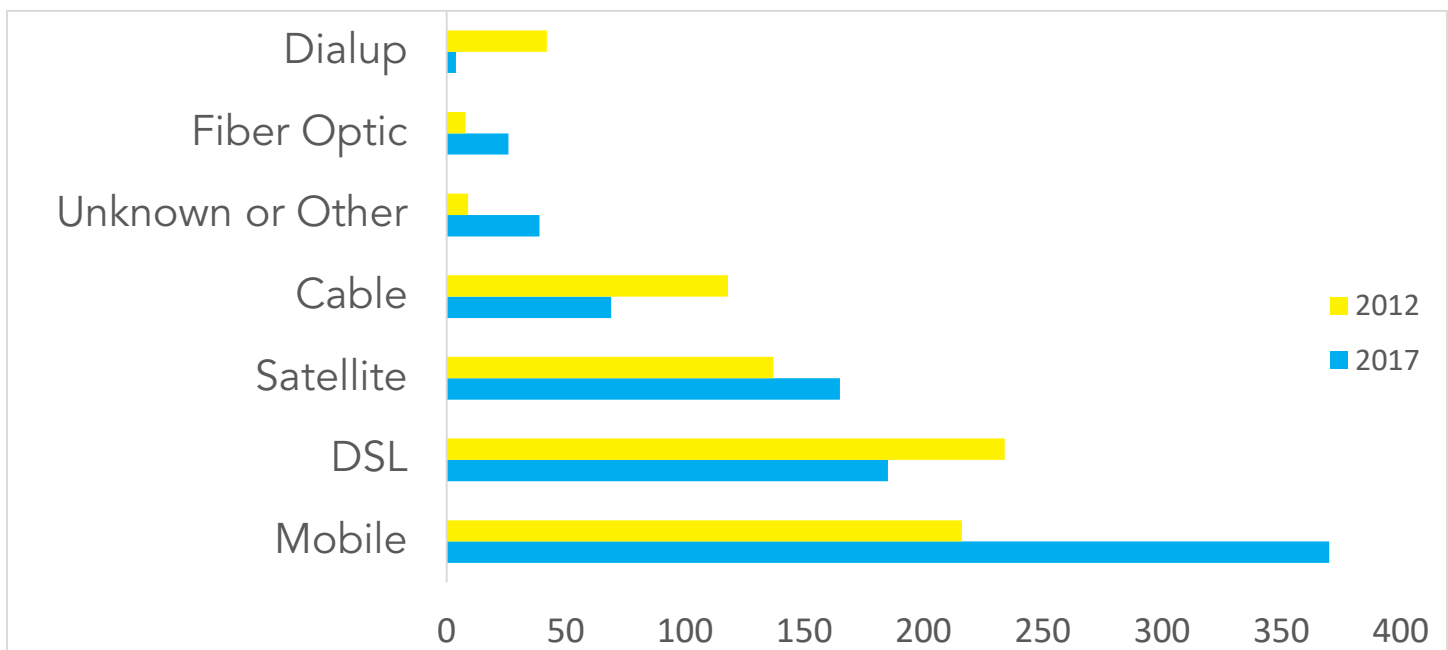
- High percent of homes not subscribing to the internet or subscribing only through a cellular plan
- High percent of homes with no computing devices or relying on mobile devices

### Data measuring Digital Distress (including margins of error)

1. Total households	8,116 households ± 191
2. Percent of homes with a <b>cellular data only subscription</b>	6.3% ± 1.8%
3. Number of households with a <b>cellular data only subscription</b>	514 households ± 147
4. Percent of homes with <b>no internet access (not subscribing)</b>	34.6% ± 3.5%
5. Percent of homes <b>relying only on mobile devices</b>	10.9% ± 1.8%
6. Percent of homes <b>not owning a computing device</b>	19.7% ± 2.5%
7. Number of homes <b>not owning a computing device</b>	1,597 households ± 206

Source: American Community Survey 2012-2017, Table S2801; <http://factfinder.census.gov>

## Farm Internet Use:

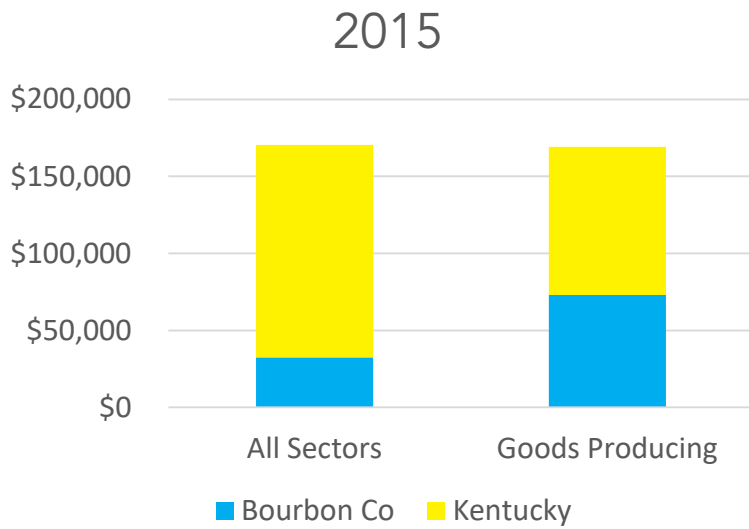


Source: Census of Agriculture 2017, Chapter 2, Table 45

[https://www.nass.usda.gov/Quick\\_Stats/CDQT/chapter/2/table/45Worker](https://www.nass.usda.gov/Quick_Stats/CDQT/chapter/2/table/45Worker)

<sup>1</sup> For more information: <https://medium.com/design-and-tech-co/digital-distress-what-is-it-and-who-does-it-affect-part-1-e1214f3f209b>; <https://medium.com/@robertoge/digital-distress-what-is-it-and-who-does-it-affect-part-2-920c525d191>

## Productivity (GDP per worker)

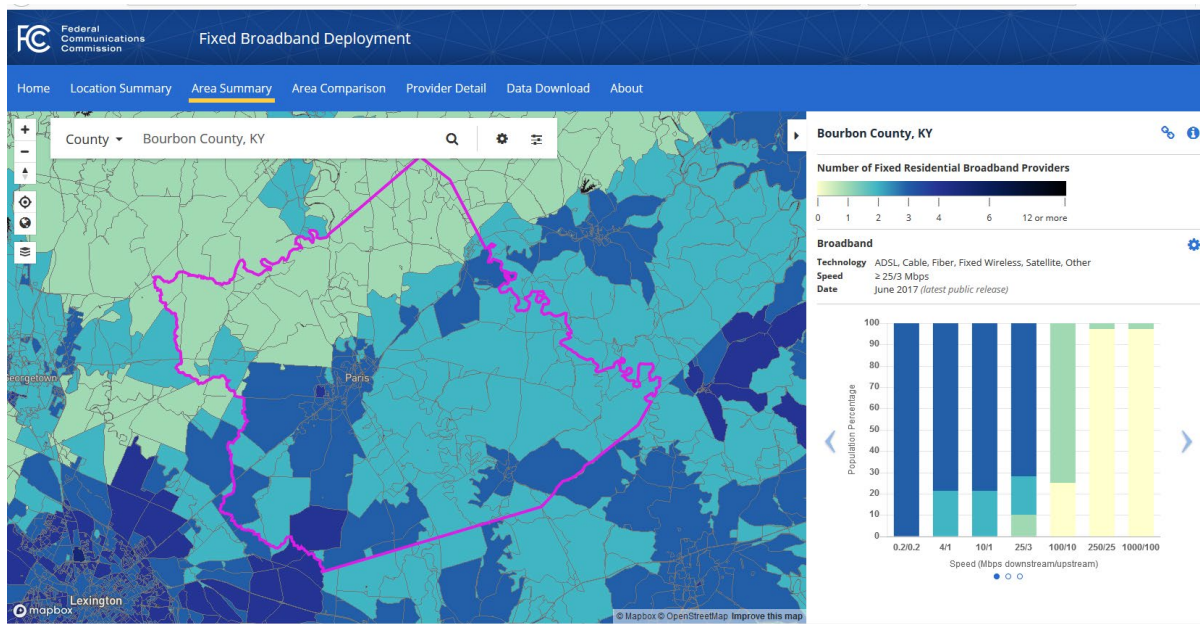


	2012		2013		2014		2015	
	Bourbon Co	KY	Bourbon Co	KY	Bourbon Co	KY	Bourbon Co	KY
<b>All sectors</b>	\$38,116	\$143,058	\$39,585	\$151,252	\$35,448	\$142,954	\$32,457	\$137,961
<b>Goods Producing</b>	\$84,359	\$97,315	\$90,541	\$98,433	\$82,236	\$97,154	\$73,033	\$96,090

GDP output and number of personnel data available at: <https://www.bea.gov/data/gdp/gdp-county>

Goods producing includes agriculture, forestry, mining, construction, and manufacturing

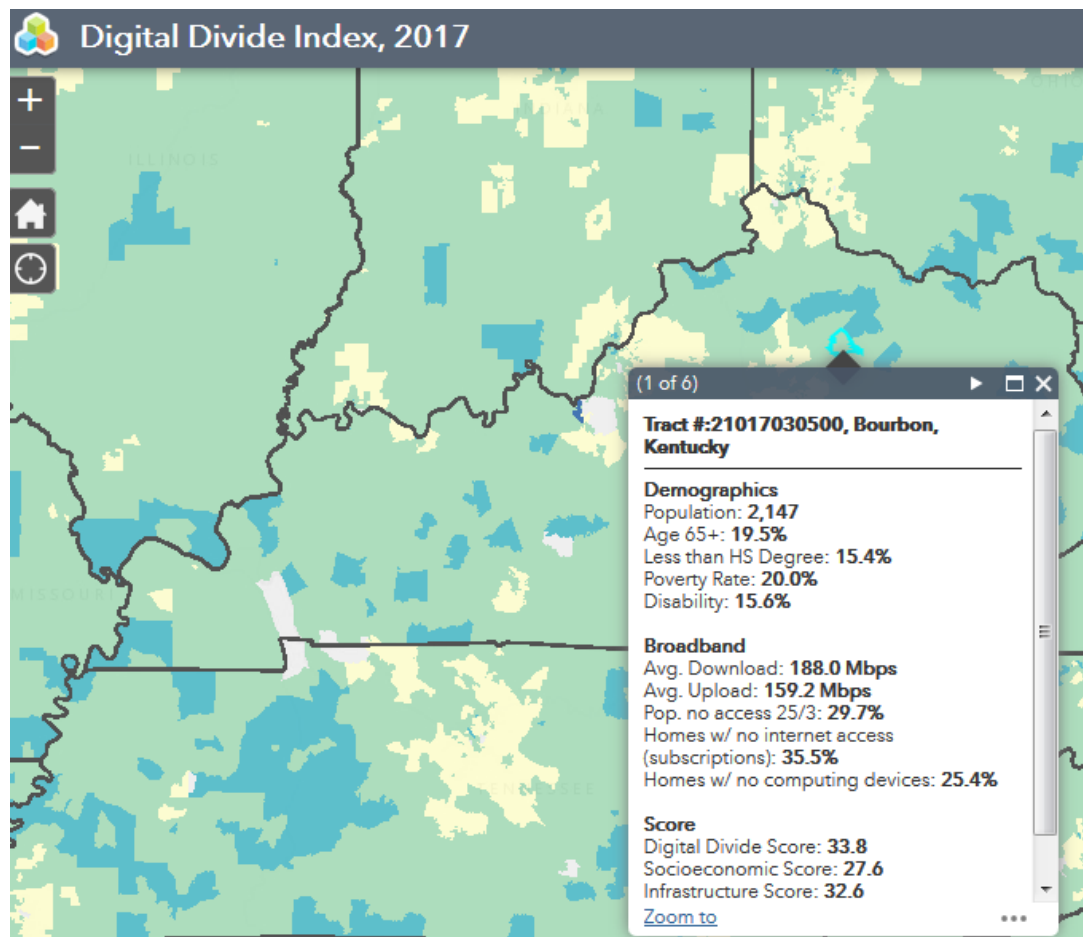
# Maximum Advertised Speeds - FCC



Source: <https://broadbandmap.fcc.gov/#/>;

Due to FCC data limitations, these data are designed as a descriptive and pragmatic tool and are not intended to be comprehensive.

# Digital Divide Index – Purdue Center for Regional Development



Source: <https://www.pcrd.purdue.edu/signature-programs/digital-divide-index.php>