



FOUNDATIONS OF PRACTICE IN COMMUNITY DEVELOPMENT

LEVEL **1** Understanding Communities and Their Dynamics

Introduction to Series



FOUNDATIONS OF PRACTICE

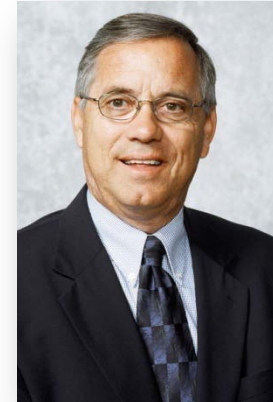
IN COMMUNITY DEVELOPMENT

LEVEL

1

Understanding Communities and Their Dynamics

Welcome to the Foundations of Practice Fall 2009 Series



Today's Host: Bo Beaulieu

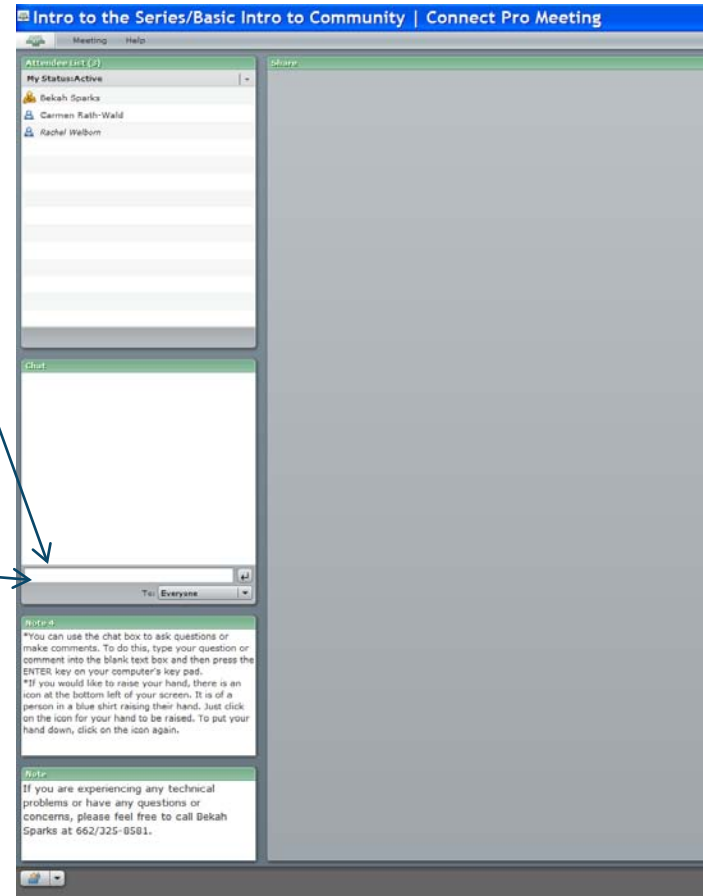
Sponsored by the Regional Rural Development Centers





Participation Tips

- Please enter your email address in the chat box.
- Microphones will be muted to reduce background noise.
- Use the “chat box” to make a comment **OR**
- Use the “raise hand” icon to speak.





About the Foundations of Practice Series

Title	Presenter	Date
Introduction to the Series and Basic Introduction to Community	Stephen Jeanetta	Sept. 29 or 30
Community Demographics	Don Albrecht	Oct. 6 or 7
Community Economics	Stephan Goetz & Walt Whitmer	Oct. 13 or 14
Community Power Structure	Dan Kahl	Oct. 20 or 21
Community Situational Analysis	Lori Garkovich	Oct. 27 or 28
Community Sustainability	Jerry Hembd	Nov. 3 or 4
Community Development Process	Deborah Tootle	Nov. 10 or 11



FOUNDATIONS OF PRACTICE IN COMMUNITY DEVELOPMENT

LEVEL **1** Understanding Communities and Their Dynamics

Session 1

Introduction to Community



FOUNDATIONS OF PRACTICE

IN COMMUNITY DEVELOPMENT

LEVEL

1

Understanding Communities and Their Dynamics

Steve Jeanetta

Community Development Specialist

Department of Rural Sociology

University of Missouri Extension

229 Gentry Hall

Columbia, MO 65211

(573) 884-3018, (573) 882-5127 fax, jeanettas@missouri.edu



Steve is a state specialist in Community Development Process for the University of Missouri Extension. He serves as the coordinator of the community development academy and has program leadership responsibility for work in community planning, organizational development and building inclusive communities.

Steve has worked as a community development specialist with the University of Missouri Extension since December of 1992. Steve's mix of experience includes two years in the rural area of Ste. Genevieve County, Missouri, and then four years in the urban areas of St. Louis County and the City of St. Louis. He moved to the campus in 1998. His skills are in fostering the development of community organizations, creating community plans, addressing land-use issues, and analyzing community infrastructure.

Internationally, Steve has conducted community development training programs in the Amazon region of Brazil, Guyana, Germany, and Canada. Along with other leaders from the U.S., Latin America, and the Caribbean, Steve completed a fellowship in the International Leadership Development Program, sponsored by the Partners of the Americas and the Kellogg Foundation.

He has an M.A. in Community and Regional Planning and a B.S. in International Affairs from the University of Nebraska-Lincoln. He is a certified planner with the American Institute of Certified Planners and a member of the American Planning Association. Steve serves as the executive director of the Missouri/Para Chapter of the Partners of the Americas.



Learning Objectives

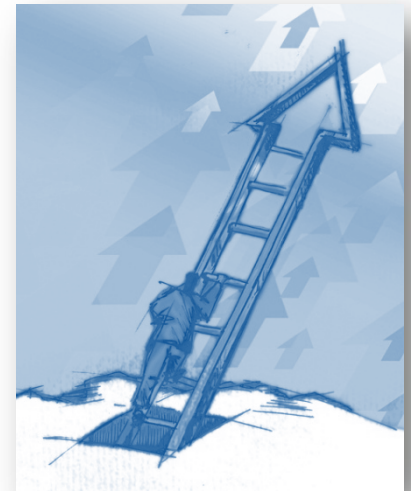
- Define community and explore the underlying assumptions that shape how people relate to community.
- Explore community types.
- Define community development and its role as a process for addressing change in community.
- Link concepts of community and community development to the work Extension does in communities every day.





Learning Objectives (cont.)

- Develop an understanding of the various roles Extension educators can play in communities.
- Identify the principles that guide the practice of community development process and apply them to working in communities.
- Review the Community Capitals & Layer Cake Model community development concepts.
- Identify the community development process.





Understanding Community

Think about a time when you were an active member of a community.

- How did you know you were part of that community?
- What were the characteristics that made that experience a community experience for you?
- How do you relate to community in your daily life?





Understanding Community

What is Community?

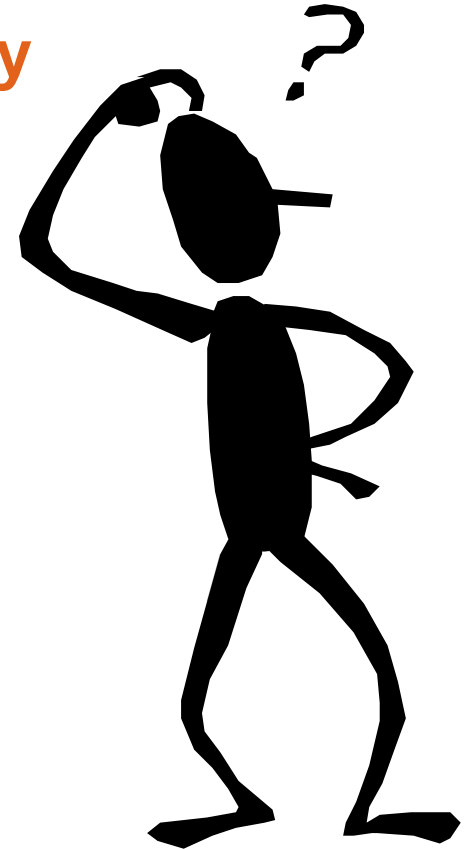




Understanding Community

What is Community?

- Interactions among people for mutual support





Understanding Community

Community types include:

- Communities of Interest
- Communities of Place





FOUNDATIONS OF PRACTICE

IN COMMUNITY DEVELOPMENT

LEVEL

1

Understanding Communities and Their Dynamics

Understanding Community

The context for this series is the community as a whole, as a “unit of analysis” rather than an individual or organization.





Understanding Community

Community includes three elements:

- Territory or place
- Social organizations or institutions that provide regular interaction among residents
- Social interaction on matters concerning a common interest



Source: Kenneth Wilkinson, 1991



Our Places

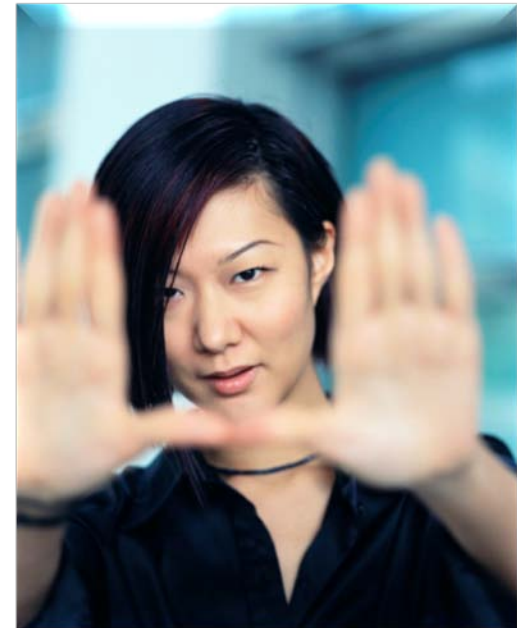
Live Meeting Poll

What kind of community do you identify with the most?



Understanding Community

The way we know community - **our experience with it** and **our understanding of the basic nature of community** - provides a framework for assessing communities and the processes at work in community.





Community Change

Based on your experiences of working in communities . . .

- What are some of the changing aspects of community?
- What do you think are the primary causes of these changes?
- How are your communities addressing these changes?





Community Development

What is community development?





Community Development

What is community development?

A planned and organized *process* through which *people* and *communities* learn how they can help themselves.





Community Development

A **process** through which **people** and **communities** acquire the attitudes, skills and abilities for active participation in creating meaningful futures and dealing with community issues.





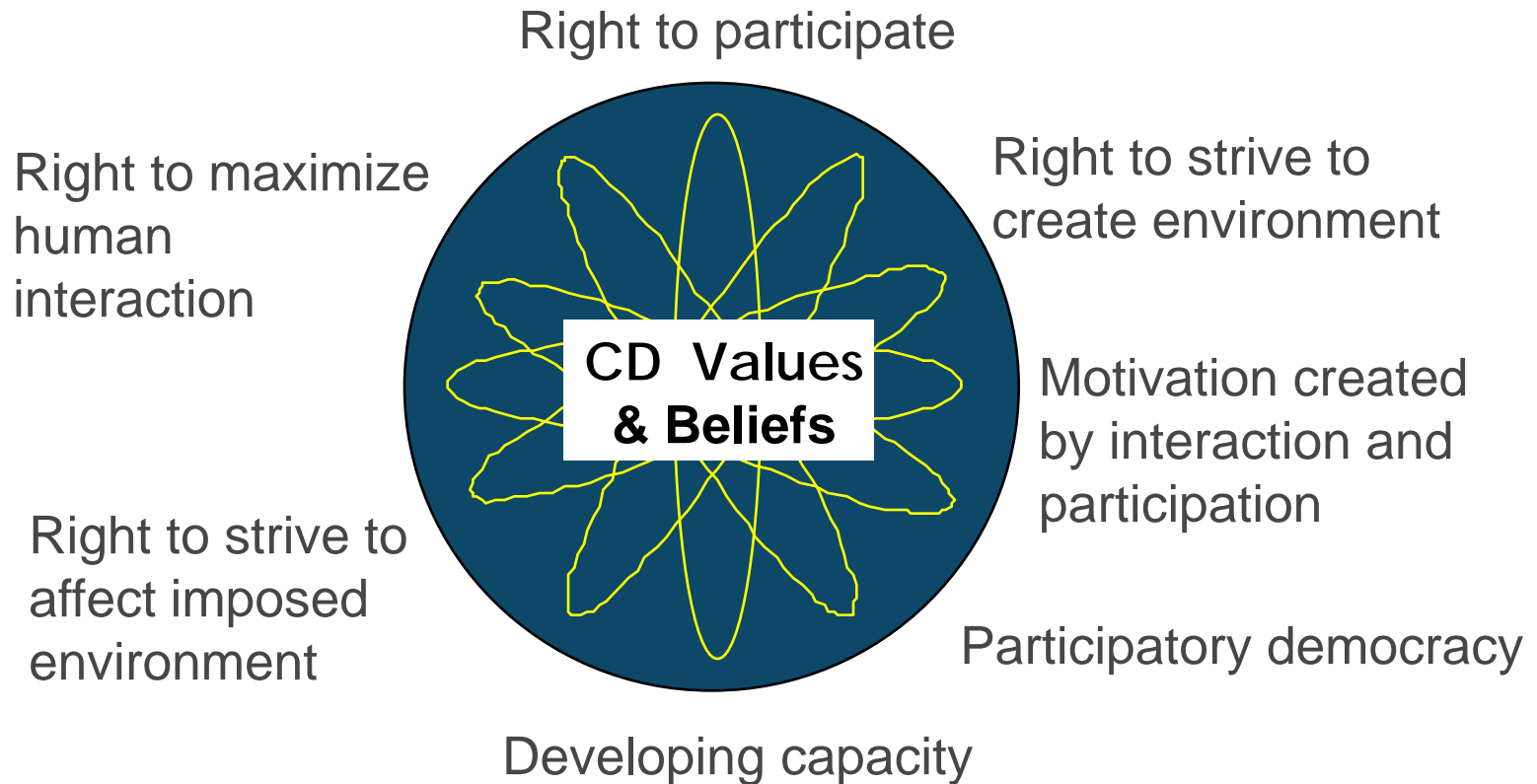
Community Development

What are the underlying values and assumptions we make when we talk about community and community development?





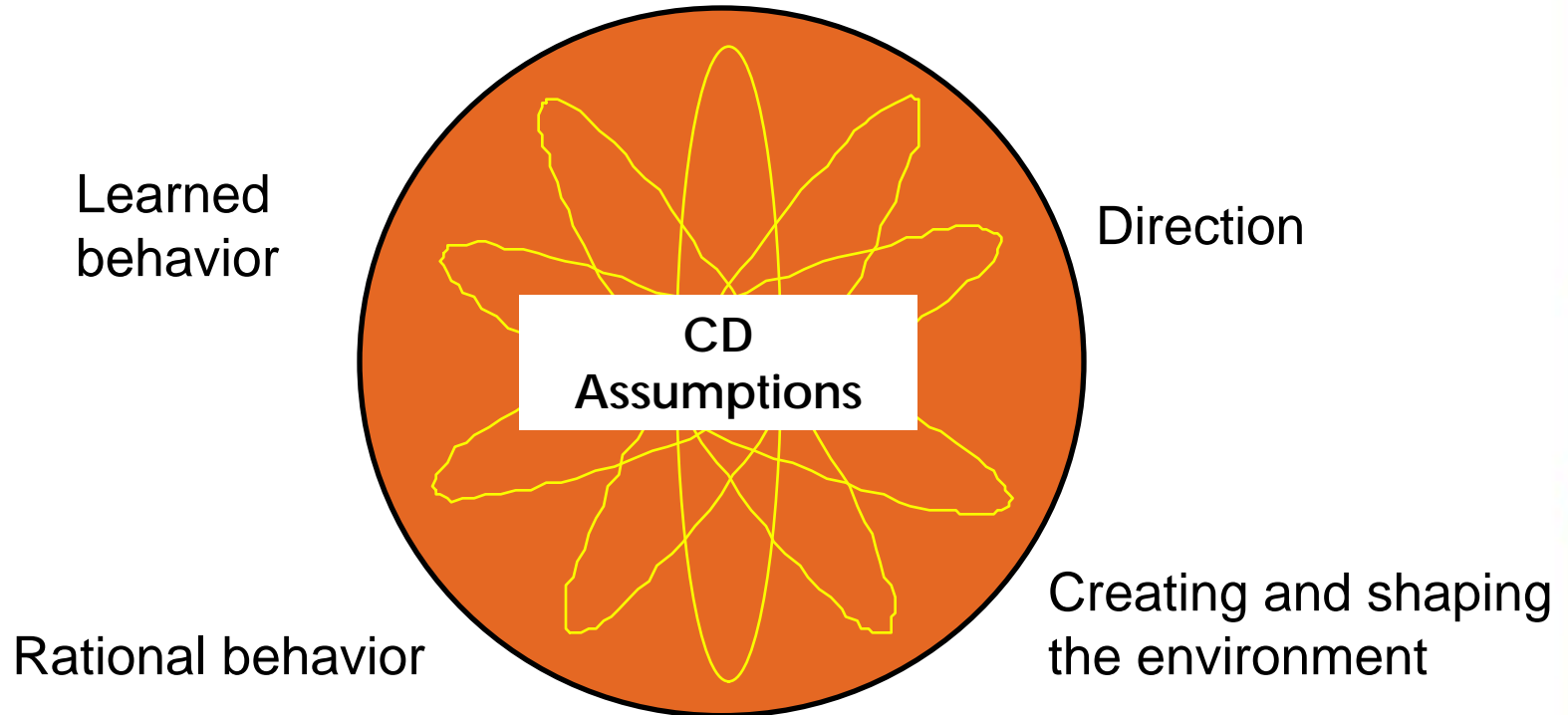
Community Development





Community Development

Learning through interaction

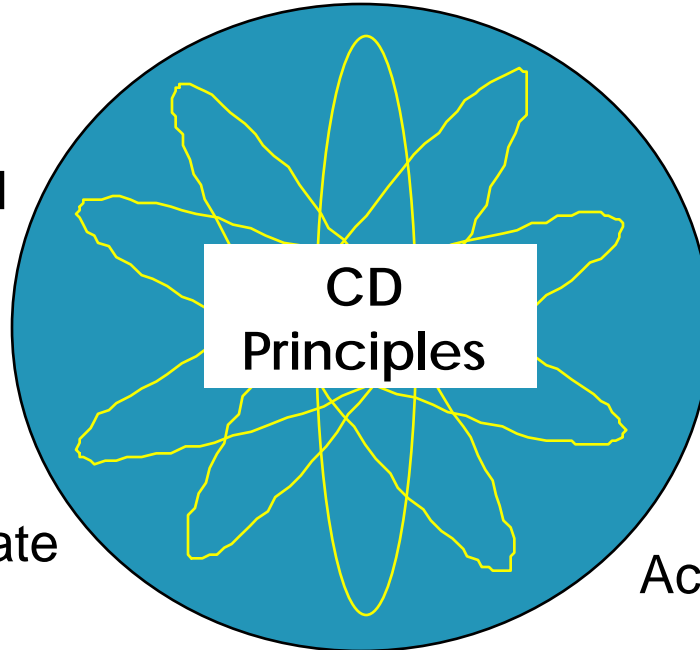




Community Development

Free and open participation

Right to be heard



Broad representation and increased breadth of perspective

Right to participate

Accurate information

Understanding is basis for change



Principles of Good Practice

- Promote active and representative participation toward enabling all community members to meaningfully influence the decisions that affect their lives.
- Engage community members in learning about and understanding community issues, and the economic, social, environmental, political, psychological, and other impacts associated with alternative courses of action.





Principles of Good Practice

- Incorporate the diverse interests and cultures of the community in the community development process; and disengage from support of any effort that is likely to adversely affect the disadvantaged members of a community.
- Work actively to enhance the leadership capacity of community members, leaders, and groups within the community.
- Be open to using the full range of action strategies to work toward the long term sustainability and well-being of the community.



Community Interaction

How do we understand the basic nature of community?

- **Natural Association** (Gemeinschaft -- natural will) primary ties, family and close community, informal association.
- **Rational Association** (Gesellschaft -- rational will) formal relationships for instrumental or contract purposes—formal organizations or purposeful structures.

Source: Tönnies, 1957



Community Interaction

Community

Society

Continuum of Community Interaction



Strong
Sense of
Community



Strong
Sense of the
Primacy of the
Individual



Community Interaction

How do we know Community?

- The community is something external to us and to be acted on, predicted and managed.
- We are the community and create it through our ongoing processes of interaction.
- Do you consider yourself an insider or outsider in the communities in which you work?

Source: Domahidy, M. (2003). Using theory to frame community and practice. Journal of the Community Development Society, 34(1), 75-84.



Insider vs. Outsider

Live Meeting Poll

Think about a project you have worked on in one of your communities. How do you think the community perceived you in that context?

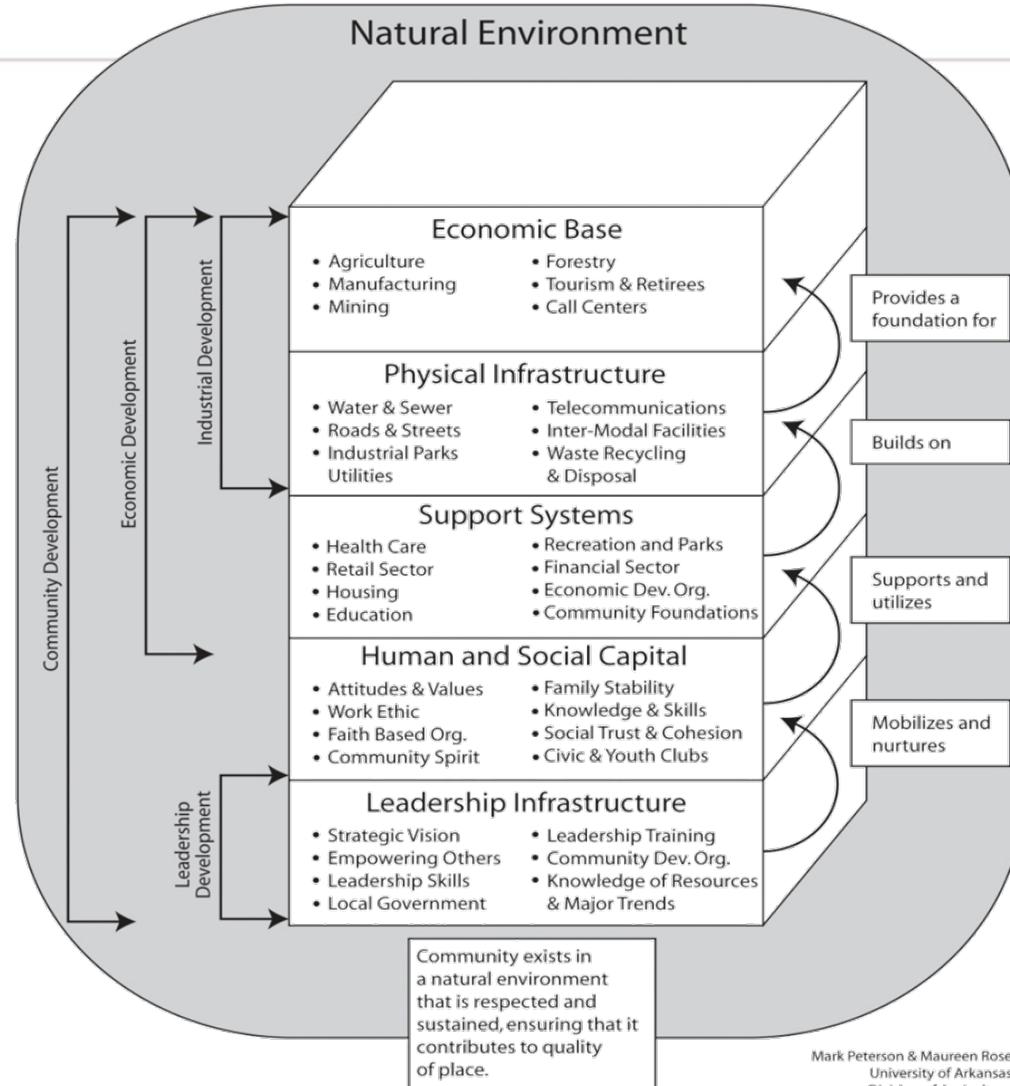


FOUNDATIONS OF PRACTICE

IN COMMUNITY DEVELOPMENT

LEVEL 1 Understanding Communities and Their Dynamics

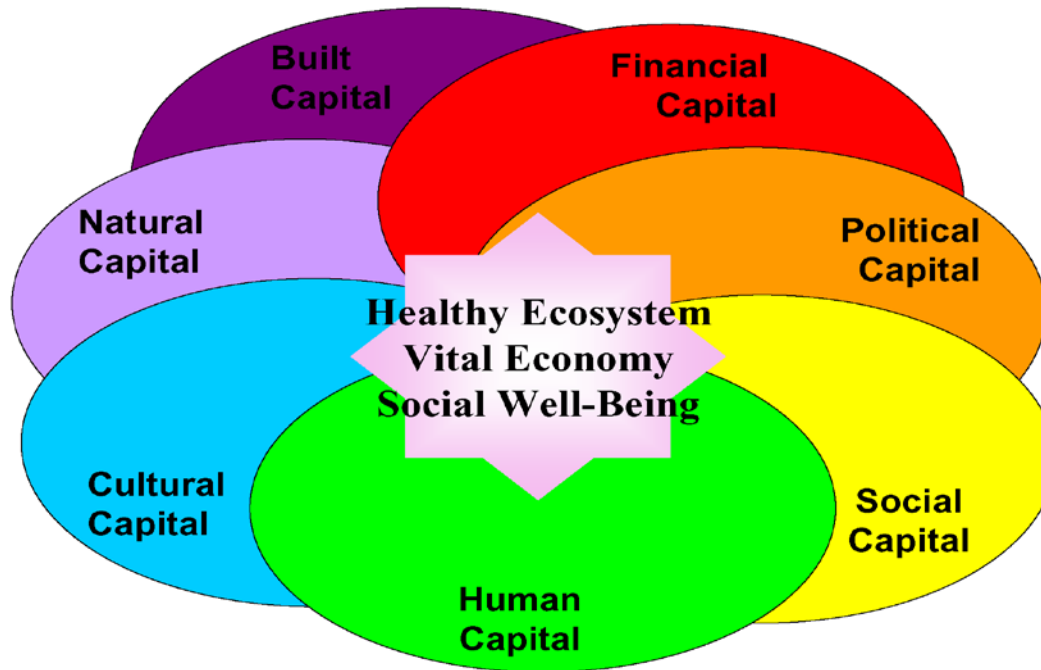
Total Community Development Model





Community Interaction

Community Capitals Model



Source: Cornelia Butler Flora and Jan Flora.
North Central Regional Center for Rural Development,
Iowa State University, 2004.



Community Interaction





Preparing for Next Week

The other presenters will have a number of exercises for you. As such, it would be helpful to have a specific community in mind that you can use as your case study.

Homework:

- In preparation for next week, please identify a specific place that you can use to apply the concepts.

Next Session:

- *Community Demographics*, Don Albrecht





Reflection Questions

- What communities am I a part of in my everyday life?
- How do I relate to community? Am I an insider or an outsider?
- How do I define community development in my work?
- What are the principles that guide my interactions with people in my community work?



Reflection Questions

- What do my principles require of me?
- How does community development relate to my work in extension?





THANK YOU

rrdc



References & Resources

- Adams, J.R., Jeanetta, S.C., Leuci, M.S., & Stallman, J. (2008, Spring). *Building communities from the grassroots*. Columbia, Missouri: University of Missouri Extension.
- Community Development Society. (1998) *Principles of good practice*. [Web site]. Columbus Ohio: Author. Retrieved May 10, 2005, <http://www.comm-dev.org>
- Domahidy, M. (2003). Using theory to frame community and practice. *Journal of the Community Development Society*, 34(1), 75-84.
- National Association of Community Development Extension Professionals, <http://nacdep.net/>



References

- Green, G.P. & Haines, A. (2008). *Asset building and community development, Second Edition*. Thousand Oaks, California: Sage Publications.
- Keller, S. (2003). *Community: Pursing the dream, living the reality*. Princeton, New Jersey: Princeton University Press.
- Phillips, R. & Pittman, R.H. (2009). *An introduction to community development*. New York: Routledge
- Tönnies, F. (1957) *Community and Society*. (C.P. Loomis, Trans.). East Lansing, Michigan: Michigan State University Press. (Original work published 1887)