



FOUNDATIONS OF PRACTICE
IN COMMUNITY DEVELOPMENT

LEVEL 1 Understanding Communities and Their Dynamics

Session 2
Community Demographics



FOUNDATIONS OF PRACTICE
IN COMMUNITY DEVELOPMENT


LEVEL 1 Understanding Communities and Their Dynamics

Demography is Destiny

Population trends reveal a great deal about community health and vitality.




- **Population Growth** – Most residents have good employment and enjoy living in the community
- **Population Decline** – Tell us the opposite
- **Characteristics of the Population** – Tell us who our clients are and how this will change the future



FOUNDATIONS OF PRACTICE
IN COMMUNITY DEVELOPMENT

LEVEL 1 Understanding Communities and Their Dynamics

Goals



- Understand the major demographic trends
- Show you where to find information on your community

FOUNDATIONS OF PRACTICE
IN COMMUNITY DEVELOPMENT

LEVEL 1 Understanding Communities and Their Dynamics

Two Components

- Overall Population Trends
- Composition of the Population



FOUNDATIONS OF PRACTICE
IN COMMUNITY DEVELOPMENT

LEVEL 1 Understanding Communities and Their Dynamics

Overall Population Trends

- Three Major Elements
 - Fertility
 - Mortality
 - Migration

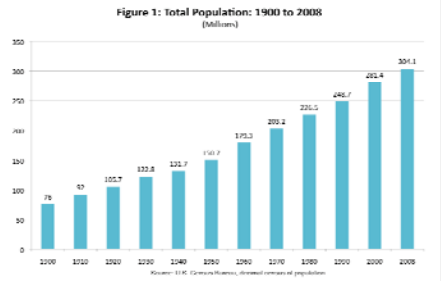


FOUNDATIONS OF PRACTICE
IN COMMUNITY DEVELOPMENT

LEVEL 1 Understanding Communities and Their Dynamics

Overall Population Trends

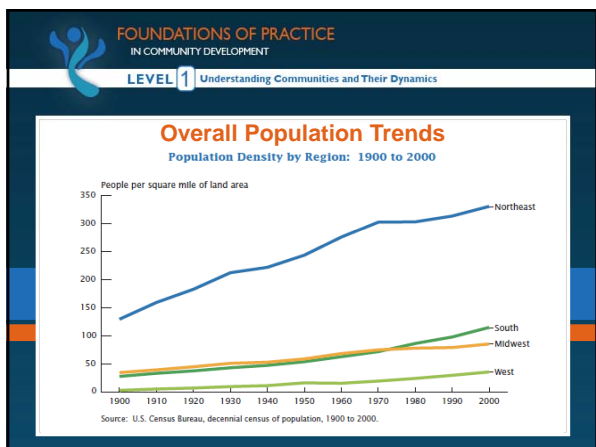
Figure 1: Total Population: 1900 to 2008 (Billions)

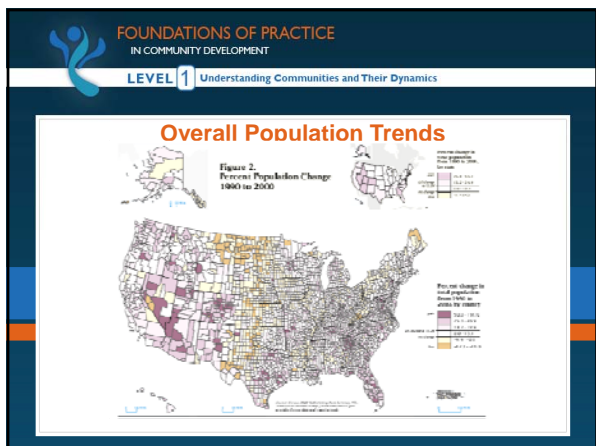


Year	Population (Billions)
1900	75
1910	93
1920	105.7
1930	133.8
1940	151.7
1950	170.7
1960	195.3
1970	230.2
1980	275.0
1990	346.7
2000	401.4
2008	306.1

Source: U.S. Census Bureau, decennial censuses of population







FOUNDATIONS OF PRACTICE
IN COMMUNITY DEVELOPMENT
LEVEL 1 Understanding Communities and Their Dynamics

Overall Population Trends

Percent Change in Population for Counties and Puerto Rico Municipalities: April 1, 2000 to July 1, 2007

Percent change in population

- 20 to over 200%
- 10 to 20%
- 0 to 10%
- 10 to 0%
- 20 to over -20%

FOUNDATIONS OF PRACTICE
IN COMMUNITY DEVELOPMENT
LEVEL 1 Understanding Communities and Their Dynamics

Overall Population Trends

Figure 7: Percent Population Change From 1980-2006 for Nonmetropolitan Counties by Natural Amenity Scale Score

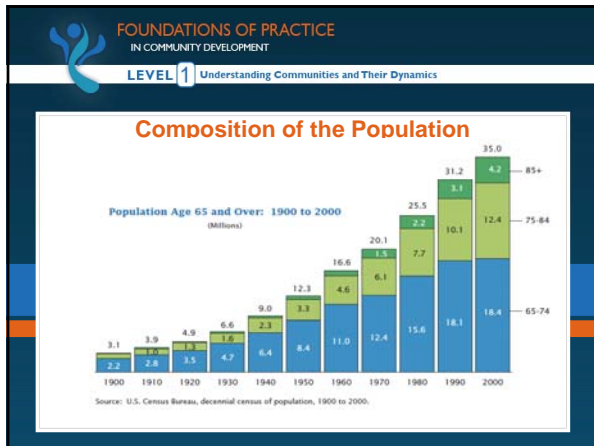
Quartile	Percent Population Change
Lowest Quartile	~15%
Second Quartile	~28%
Third Quartile	~38%
Highest Quartile	~48%

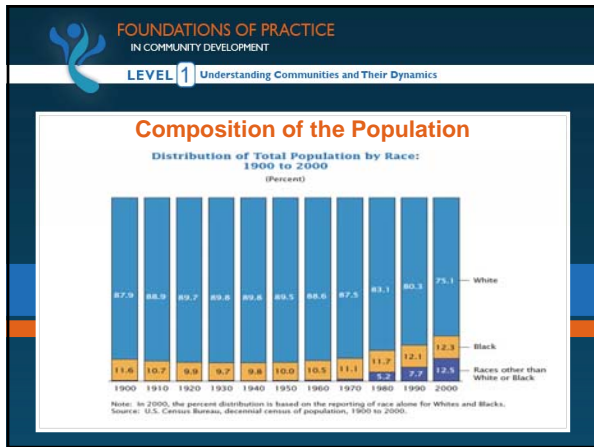
FOUNDATIONS OF PRACTICE
IN COMMUNITY DEVELOPMENT
LEVEL 1 Understanding Communities and Their Dynamics

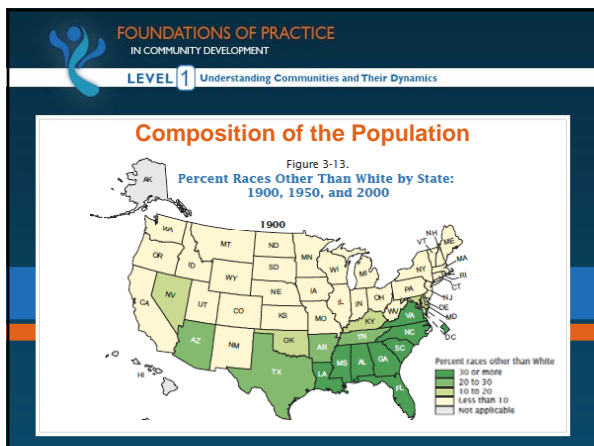
Composition of the Population

- Metropolitan vs. Nonmetropolitan
- Age
- Race/Ethnicity
- Household Structure

A photograph showing the silhouettes of several people standing in a line, facing a large, glowing world map that is the background of the image.







FOUNDATIONS OF PRACTICE
IN COMMUNITY DEVELOPMENT

LEVEL 1 Understanding Communities and Their Dynamics

Composition of the Population

Percent races other than White

- 30 or more
- 20 to 30
- 10 to 20
- 10% or less
- not applicable

FOUNDATIONS OF PRACTICE
IN COMMUNITY DEVELOPMENT

LEVEL 1 Understanding Communities and Their Dynamics

Composition of the Population

Percent races other than White

- 30 or more
- 20 to 30
- 10 to 20
- 10% or less
- not applicable

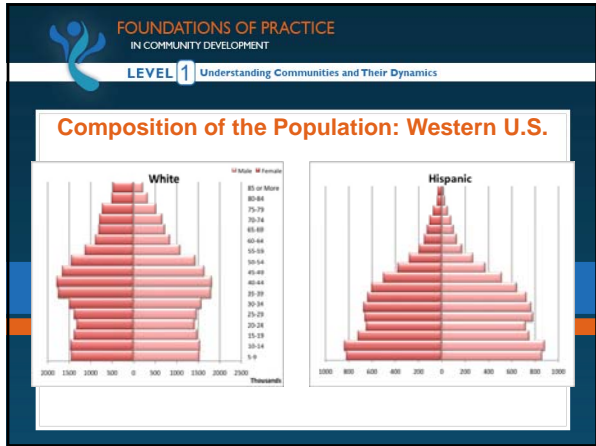
FOUNDATIONS OF PRACTICE
IN COMMUNITY DEVELOPMENT

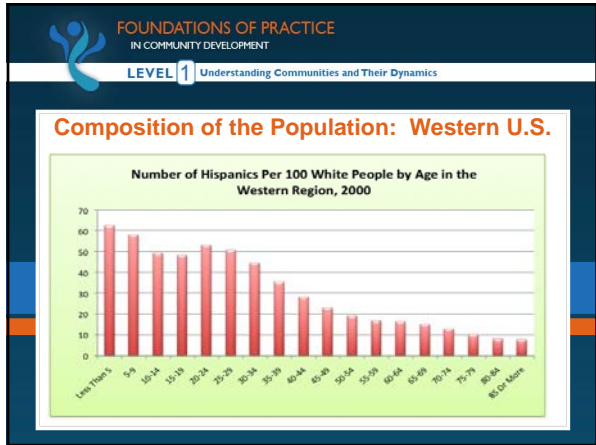
LEVEL 1 Understanding Communities and Their Dynamics

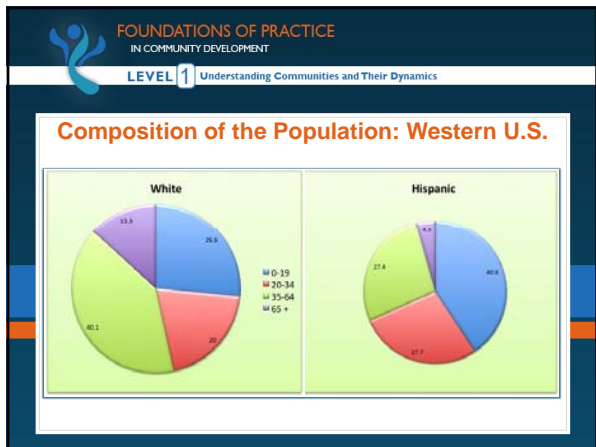
Composition of the Population: Western U.S.

Figure 7: Population Changes from 1980-2000 for the Western Region (N=18,164,406)

Race	Percentage
White	37.0%
Hispanic	20.0%
Asian	16.0%
Black	2.0%
Native American	2.4%







FOUNDATIONS OF PRACTICE
IN COMMUNITY DEVELOPMENT

LEVEL 1 Understanding Communities and Their Dynamics

Composition of the Population: U.S.

(Resident population as of July 1. Numbers in thousands)

Year	Non-Hispanic				Hispanic (any race)	Total
	White alone	Black alone	Asian alone	All other races		
2000	195,771	34,414	10,436	5,909	35,629	282,158
2010	200,853	37,985	14,083	7,586	49,726	310,233
2020	205,255	41,847	18,308	9,612	66,365	341,387
2030	207,217	45,461	22,991	11,904	85,931	373,504
2040	206,065	48,780	28,064	14,523	108,223	405,655
2050	203,347	51,949	33,418	17,503	132,792	439,010

Source: U.S. Census Bureau, 2008 National Projections

FOUNDATIONS OF PRACTICE
IN COMMUNITY DEVELOPMENT

LEVEL 1 Understanding Communities and Their Dynamics

Composition of the Population: U.S.

Distribution of Households by Size: 1900 and 1940 to 2000 (Percent)

Year	1-person	2-person	3-person	4-person	5-or more person
1900	3.1	15.2	17.8	17.2	44.7
1910	(Not available)	(Not available)	(Not available)	(Not available)	(Not available)
1920	(Not available)	(Not available)	(Not available)	(Not available)	(Not available)
1930	(Not available)	(Not available)	(Not available)	(Not available)	(Not available)
1940	2.2	24.8	22.4	18.1	27.0
1950	9.3	28.1	22.8	18.4	21.4
1960	13.3	28.0	18.9	17.2	22.3
1970	17.6	29.6	17.2	15.4	20.2
1980	22.7	31.3	17.4	15.4	19.2
1990	24.6	32.0	17.4	15.1	11.0
2000	25.8	32.6	16.5	14.2	10.8

Source: U.S. Census Bureau, decennial census of population, 1900, and decennial census of housing, 1940 to 2000.

FOUNDATIONS OF PRACTICE
IN COMMUNITY DEVELOPMENT

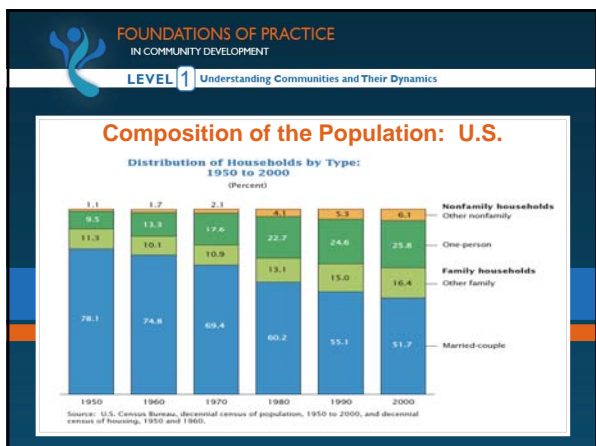
LEVEL 1 Understanding Communities and Their Dynamics

Composition of the Population: U.S.

Average Household Size: 1900 and 1930 to 2000 (People per household)

Year	Average Household Size
1900	4.60
1910	(Not available)
1920	(Not available)
1930	4.01
1940	3.68
1950	3.38
1960	3.29
1970	3.11
1980	2.75
1990	2.63
2000	2.59

Source: U.S. Census Bureau, decennial census of population, 1900 and 1930 to 2000, and decennial census of housing, 1940.



- FOUNDATIONS OF PRACTICE
IN COMMUNITY DEVELOPMENT
- LEVEL 1 Understanding Communities and Their Dynamics
- ### Data Sources
- www.census.gov
 - State Data Centers and Universities
 - WRDC Population Briefs & County Data
– http://wrdc.usu.edu/html/rural_resources/population

FOUNDATIONS OF PRACTICE
IN COMMUNITY DEVELOPMENT

LEVEL 1 Understanding Communities and Their Dynamics

Contact Information


Don E. Albrecht
Director
Western Rural Development Center
Utah State University
8335 Old Main Hill
Logan UT 84322-8335

435.797.9732
don.albrecht@usu.edu

FOUNDATIONS OF PRACTICE
IN COMMUNITY DEVELOPMENT
LEVEL 1 Understanding Communities and Their Dynamics

Looking Ahead: Session Three

Community Economics




Instructors:
Stephan Goetz &
Walt Whitmer

FOUNDATIONS OF PRACTICE
IN COMMUNITY DEVELOPMENT
LEVEL 1 Understanding Communities and Their Dynamics


Homework Questions: Session Three

- How has the economy in your community changed in the last five years?
- How have these changes been addressed?



FOUNDATIONS OF PRACTICE
IN COMMUNITY DEVELOPMENT
LEVEL 1 Understanding Communities and Their Dynamics

Evaluation



Please take a few minutes to help us improve these sessions by completing the short survey:

http://www.surveymonkey.com/s.aspx?sm=j_2br8viQvrqUa4t9UcU2F7Q_3d_3d
