



FOUNDATIONS OF PRACTICE
IN COMMUNITY DEVELOPMENT

LEVEL 1 Understanding Communities and Their Dynamics

Session 2

Community Demographics



Demography is Destiny

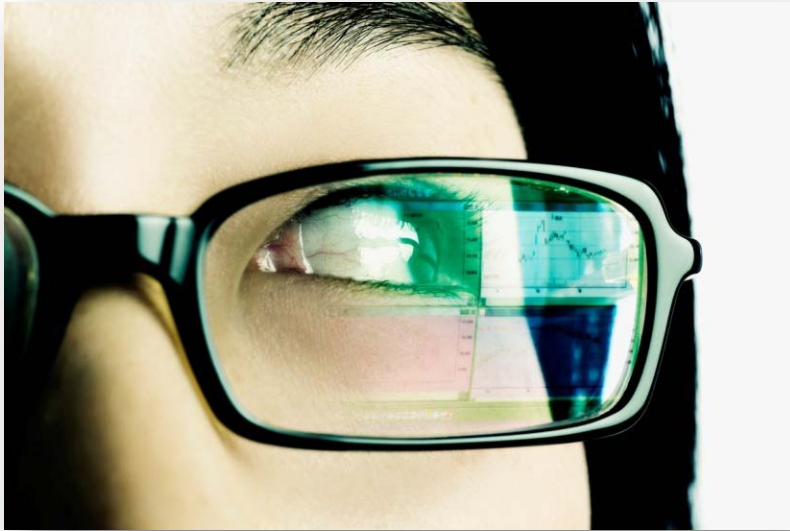
Population trends reveal a great deal about community health and vitality.



- **Population Growth** – Most residents have good employment and enjoy living in the community
- **Population Decline** – Tell us the opposite
- **Characteristics of the Population** – Tell us who our clients are and how this will change the future



Goals



- Understand the major demographic trends
- Show you where to find information on your community



Two Components

- Overall Population Trends
- Composition of the Population





Overall Population Trends

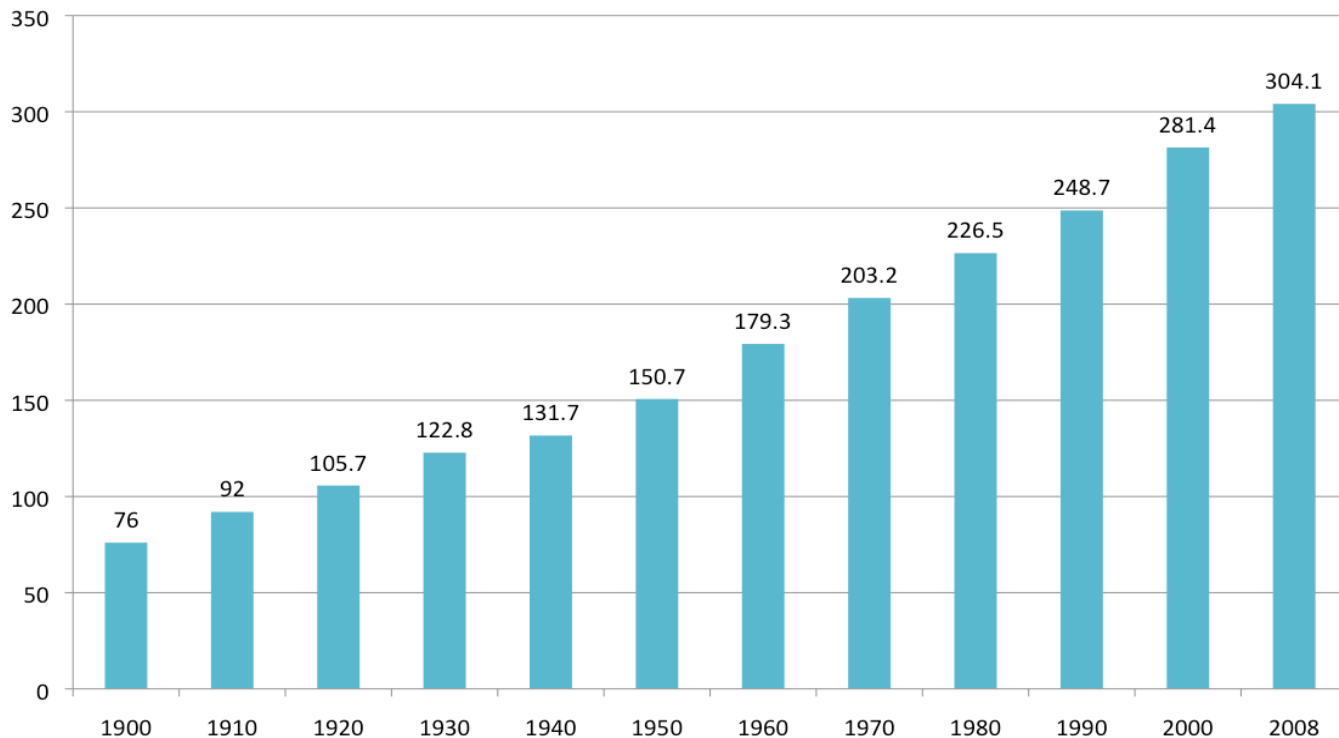
- Three Major Elements
 - Fertility
 - Mortality
 - Migration





Overall Population Trends

Figure 1: Total Population: 1900 to 2008
(Millions)



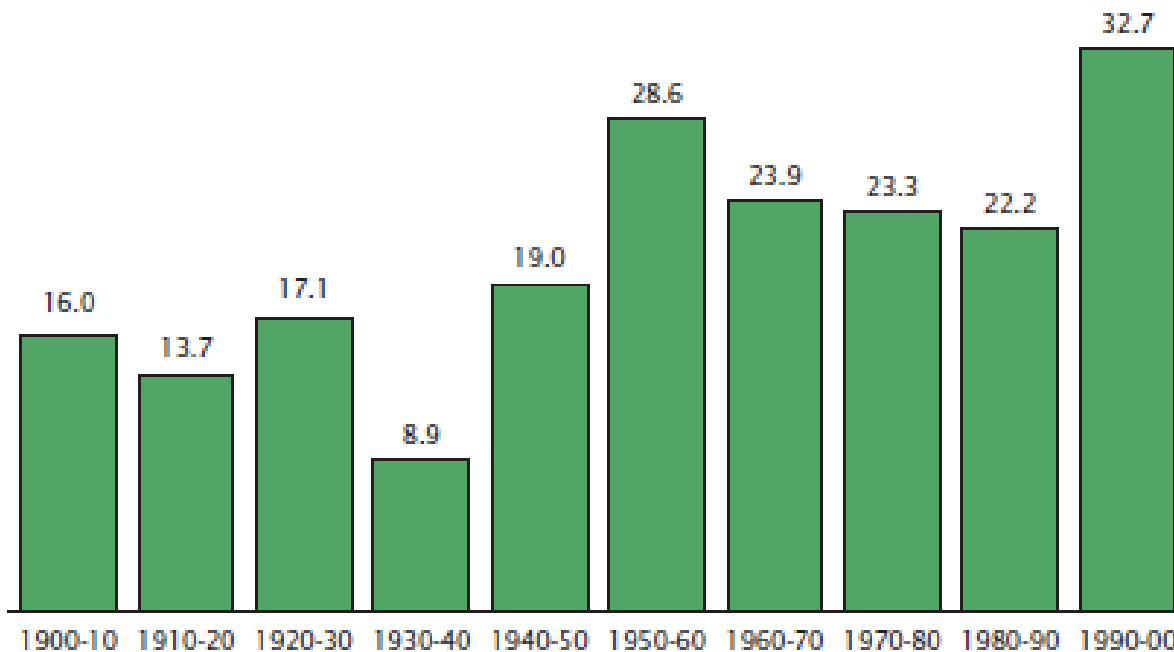
Source: U.S. Census Bureau, decimal census of population



Overall Population Trends

Population Increase by Decade: 1900 to 2000

Numerical increase in millions

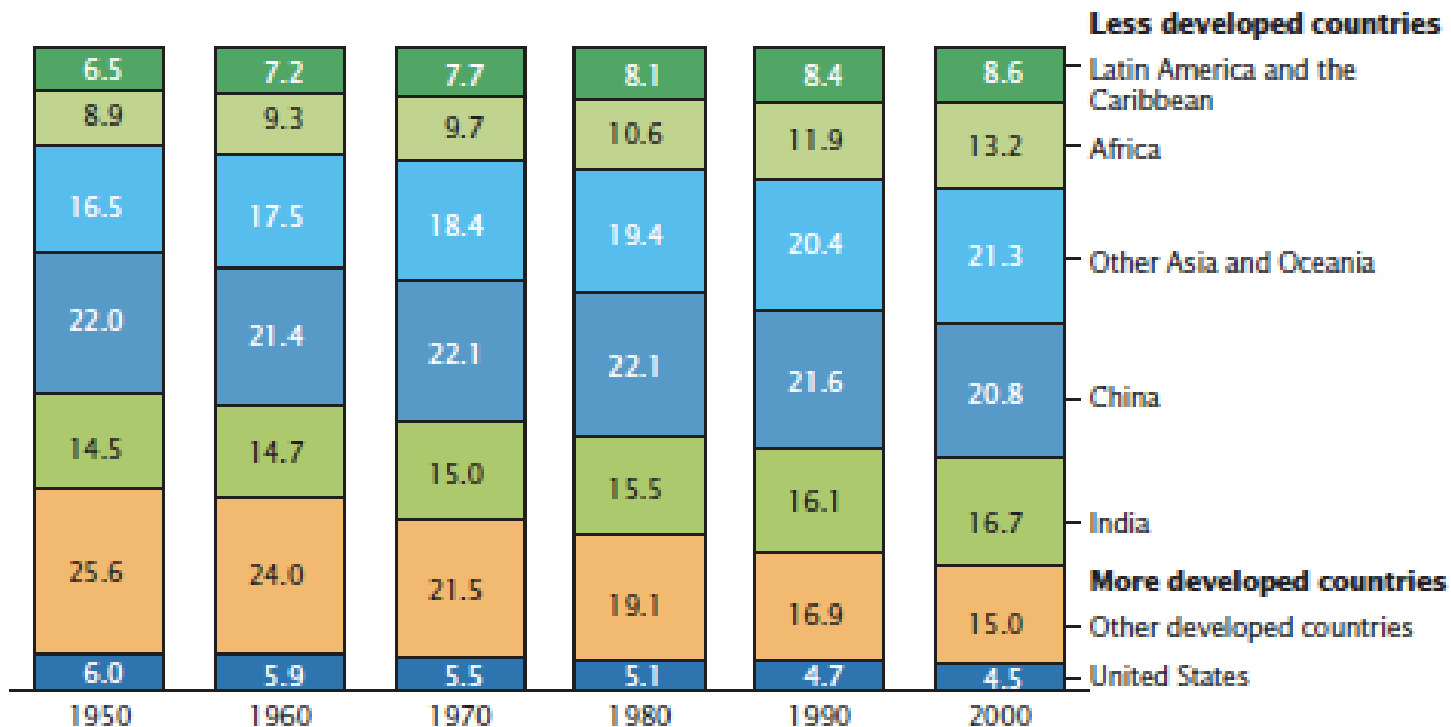




Overall Population Trends

World Population Distribution: 1950 to 2000

(Percent)



Note: Estimates are for July 1.

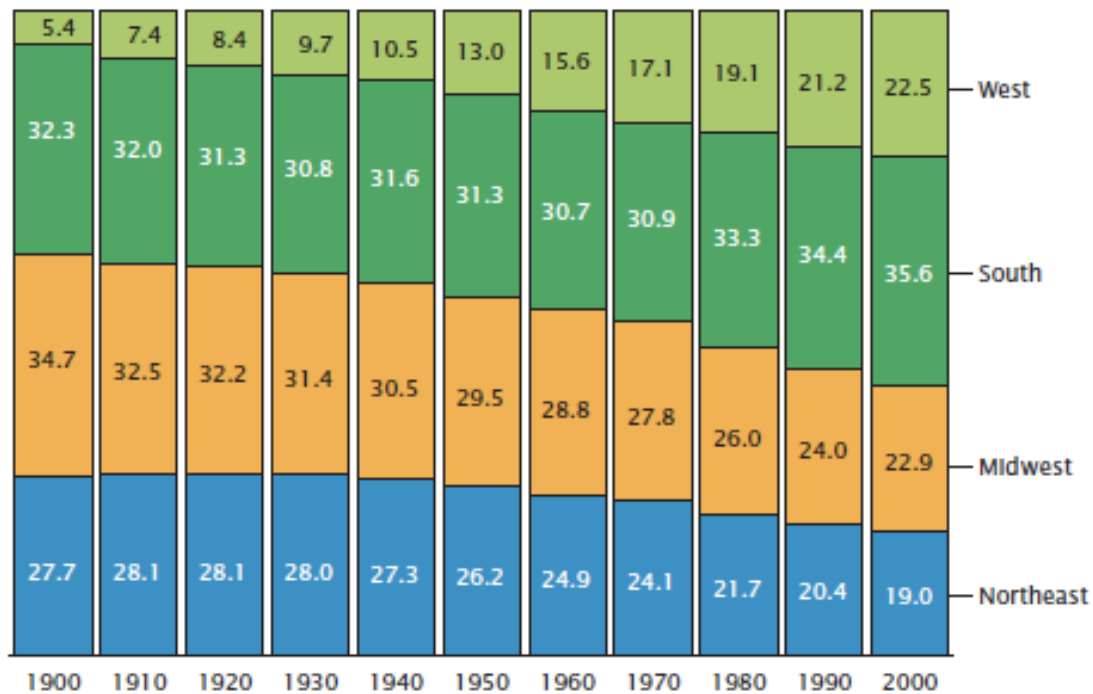
Source: U.S. Census Bureau, International Data Base, www.census.gov/ipc/www/idbnew.html.



Overall Population Trends

Population Distribution by Region: 1900 to 2000

(Percent)

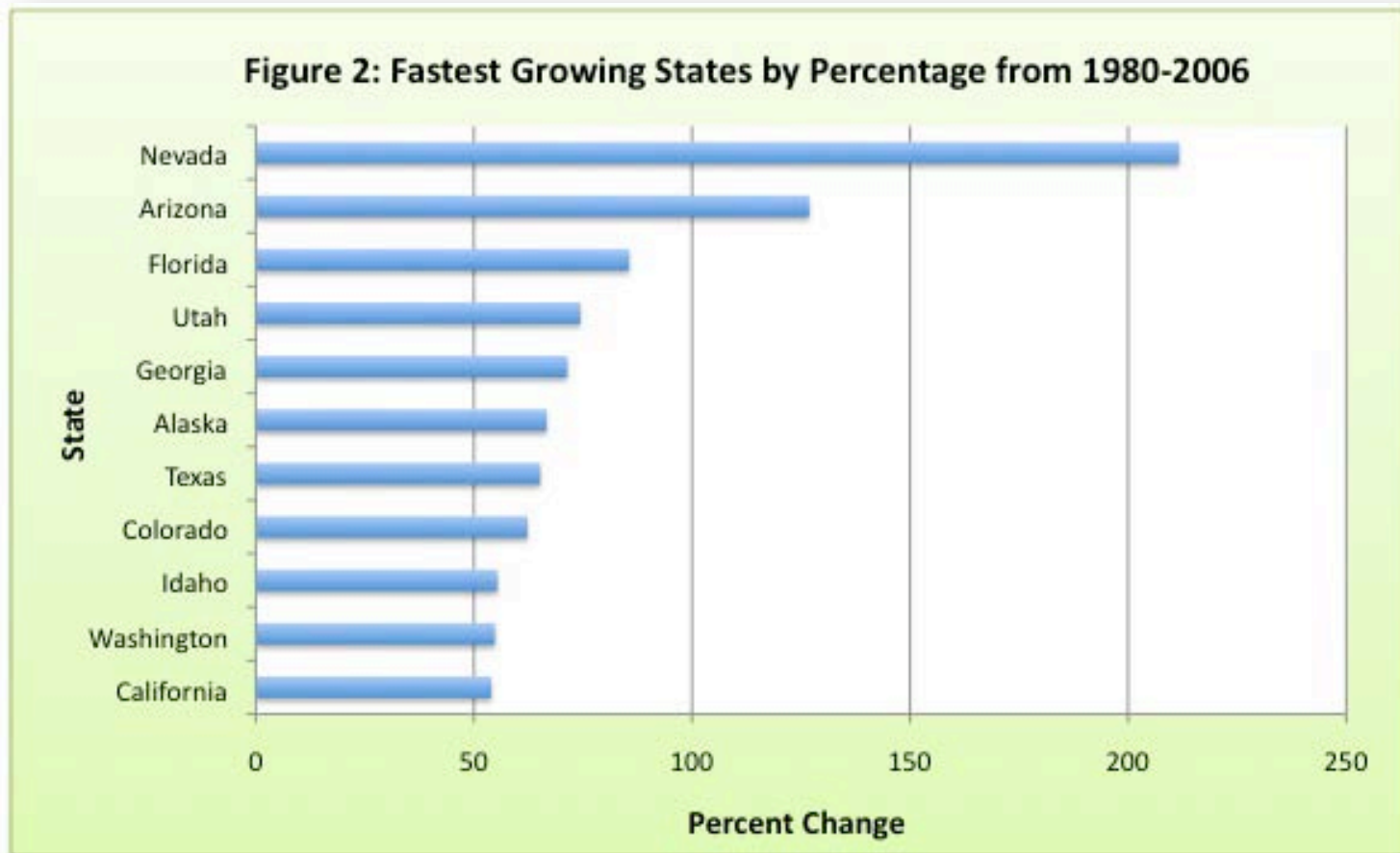


Source: U.S. Census Bureau, decennial census of population, 1900 to 2000.



Overall Population Trends

Figure 2: Fastest Growing States by Percentage from 1980-2006





FOUNDATIONS OF PRACTICE

IN COMMUNITY DEVELOPMENT

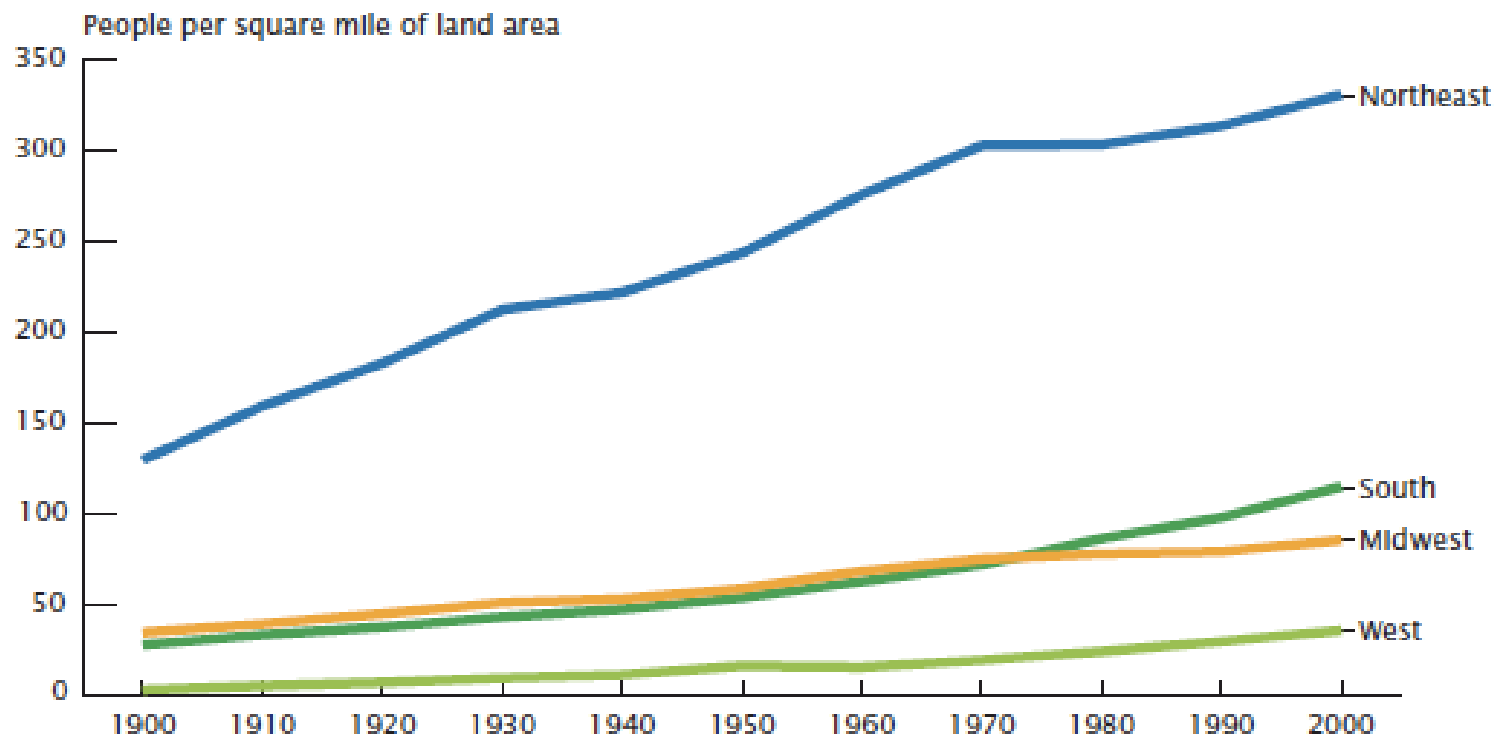
LEVEL

1

Understanding Communities and Their Dynamics

Overall Population Trends

Population Density by Region: 1900 to 2000



Source: U.S. Census Bureau, decennial census of population, 1900 to 2000.



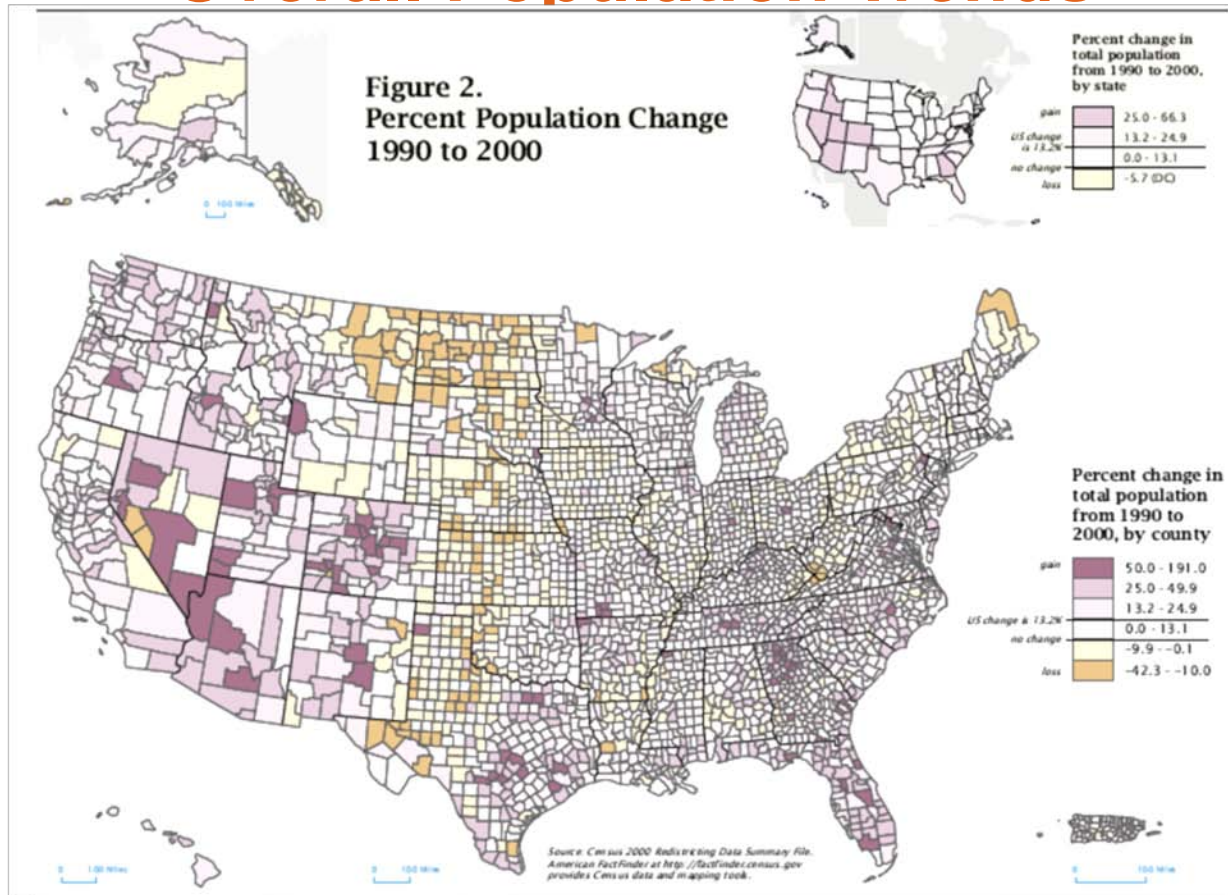
FOUNDATIONS OF PRACTICE

IN COMMUNITY DEVELOPMENT

LEVEL 1

Understanding Communities and Their Dynamics

Overall Population Trends





FOUNDATIONS OF PRACTICE

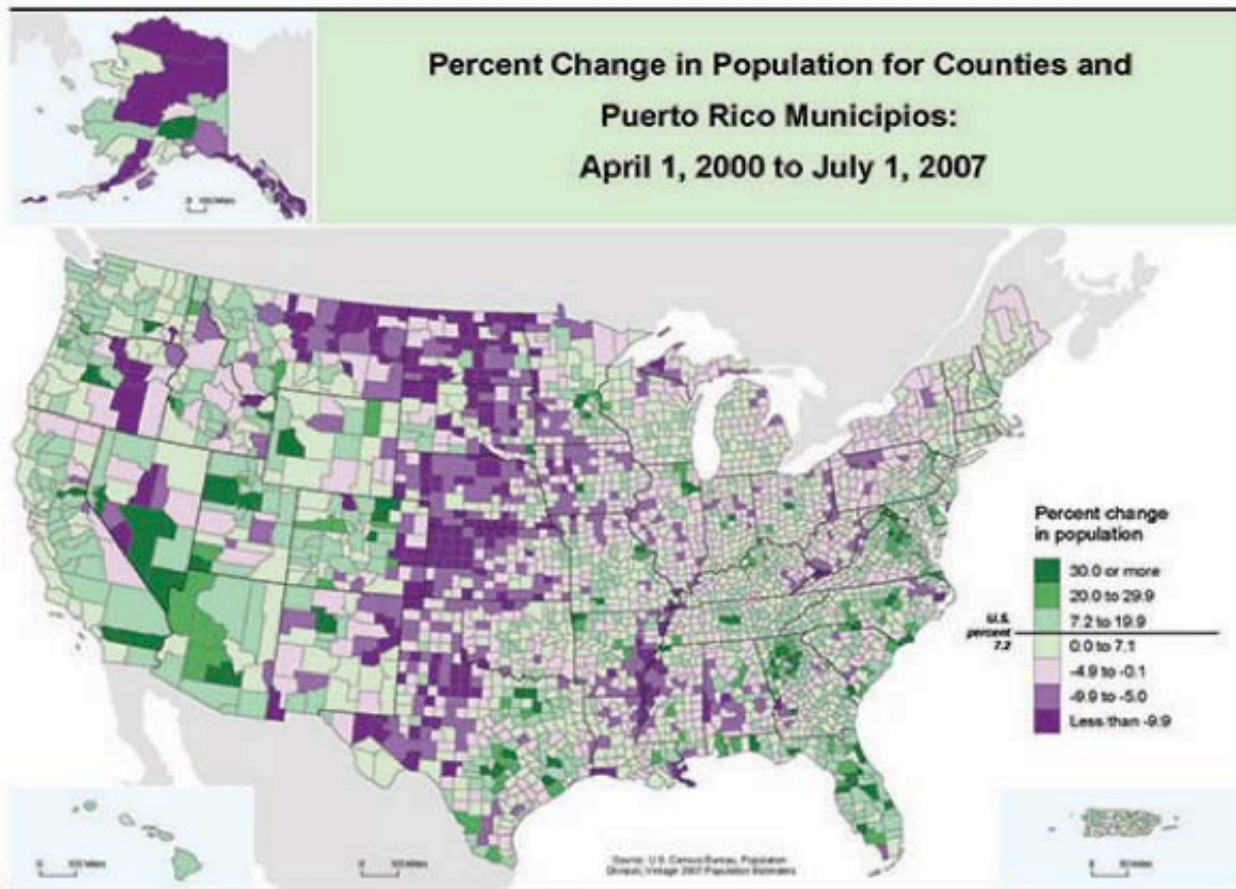
IN COMMUNITY DEVELOPMENT

LEVEL

1

Understanding Communities and Their Dynamics

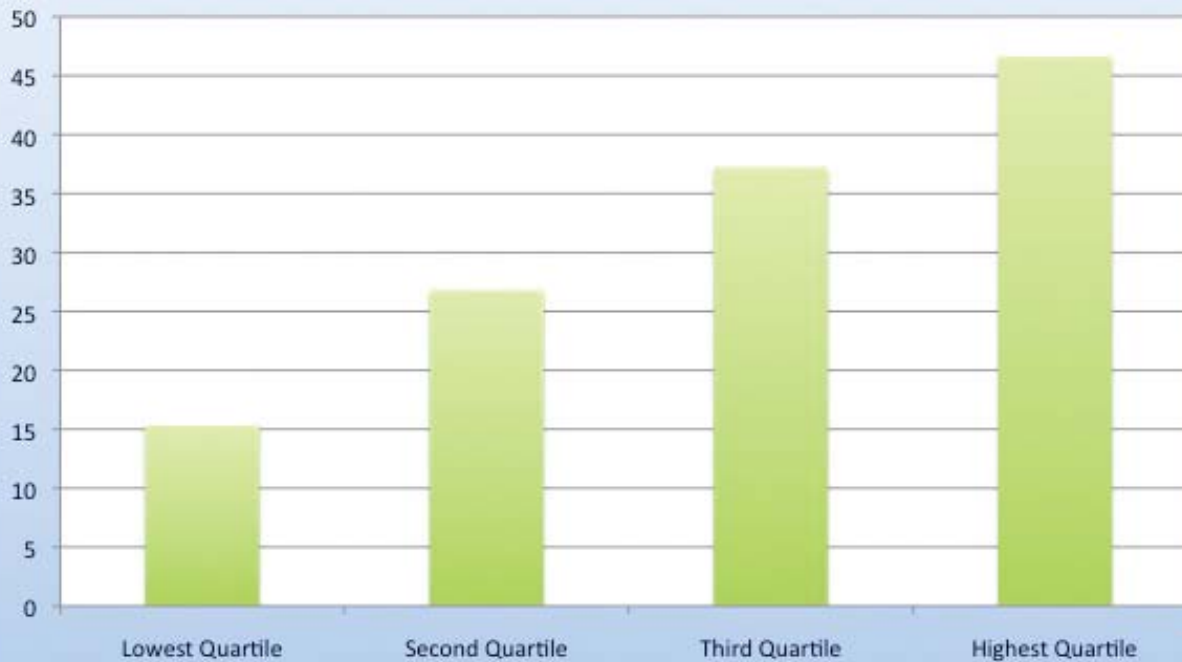
Overall Population Trends





Overall Population Trends

**Figure 7: Percent Population Change From 1980-2006
for Nonmetropolitan Counties by Natural Amenity Scale Score**





Composition of the Population

- Metropolitan vs. Nonmetropolitan
- Age
- Race/Ethnicity
- Household Structure

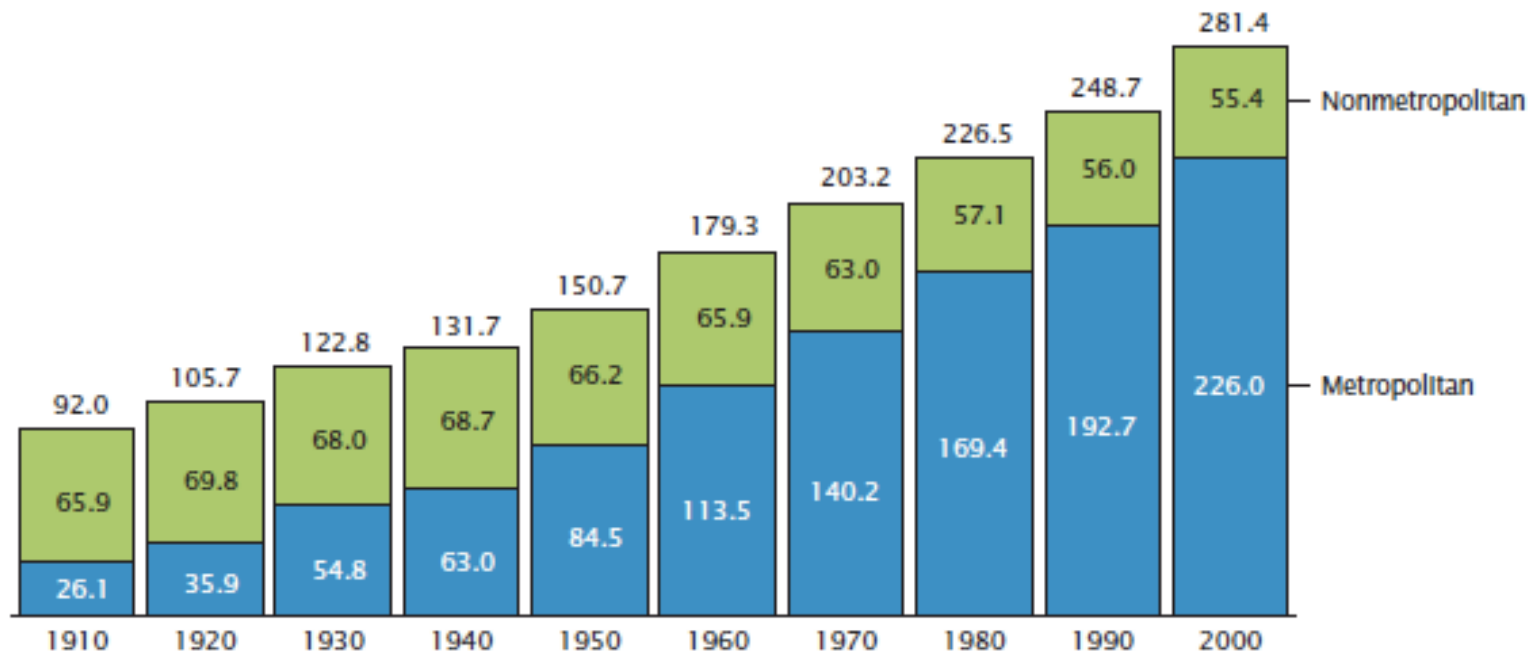




Composition of the Population

Total Population by Metropolitan Status: 1910 to 2000

(Millions)



Source: U.S. Census Bureau, decennial census of population, 1910 to 2000.



FOUNDATIONS OF PRACTICE

IN COMMUNITY DEVELOPMENT

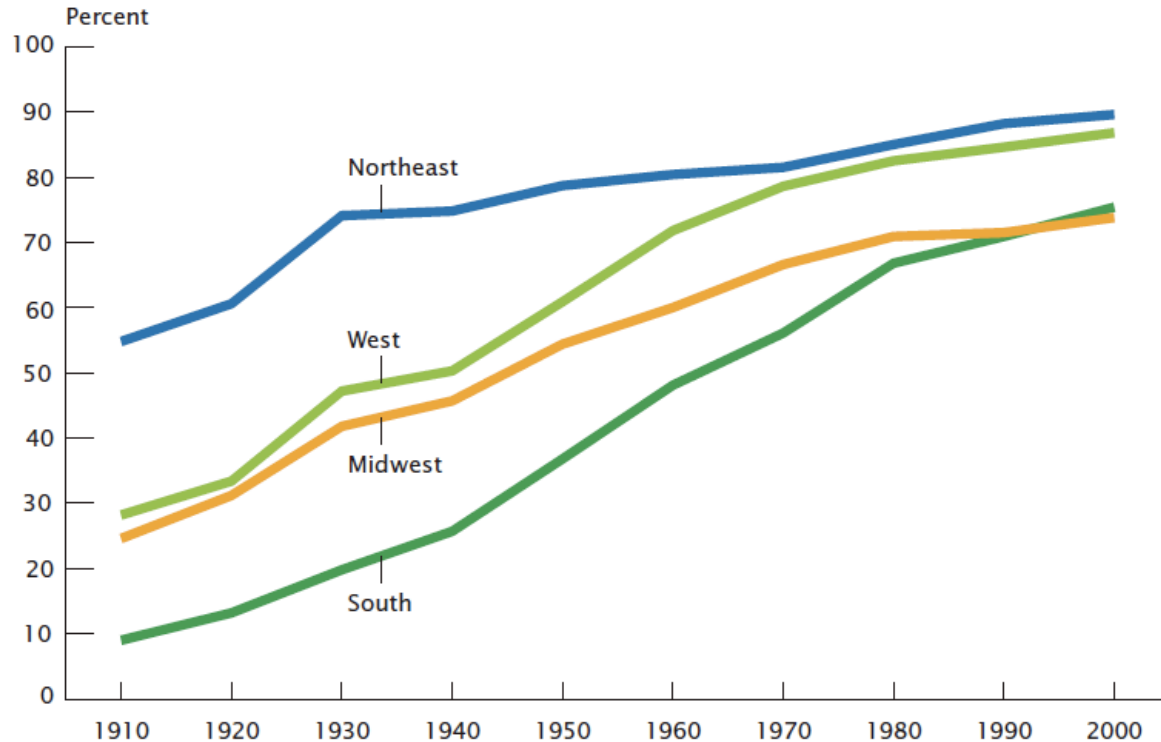
LEVEL

1

Understanding Communities and Their Dynamics

Composition of the Population

Percent of Population Living in Metropolitan Areas by Region: 1910 to 2000

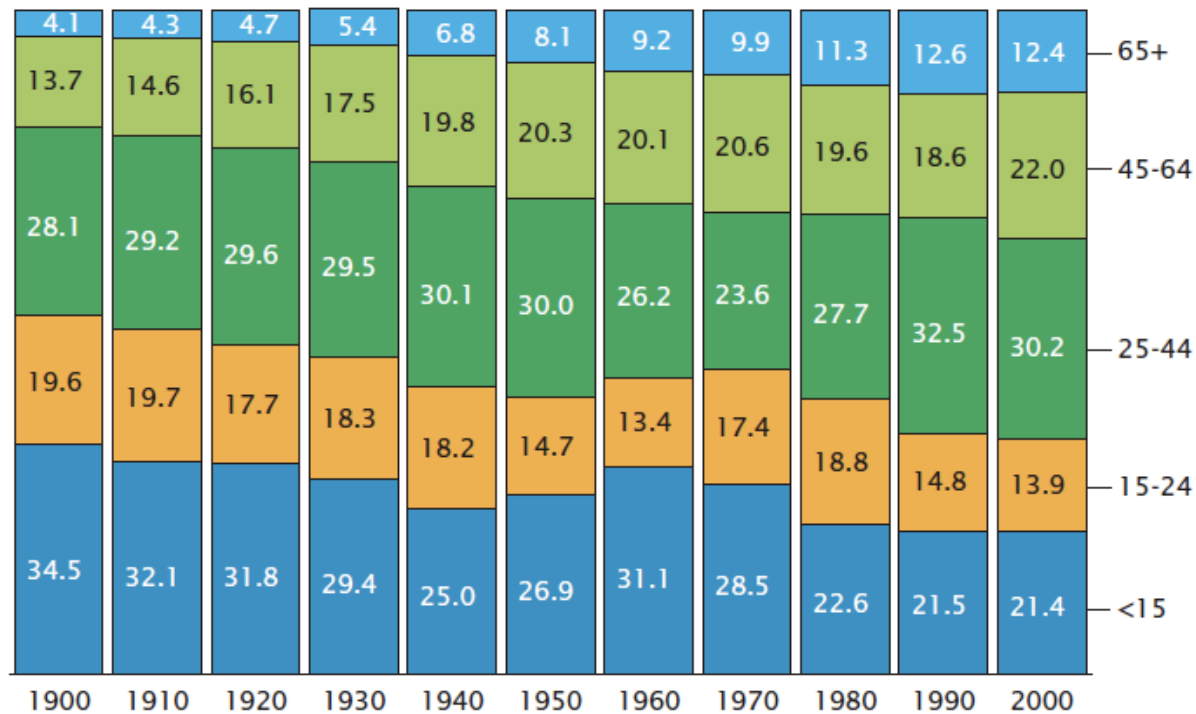


Source: U.S. Census Bureau, decennial census of population, 1910 to 2000.



Composition of the Population

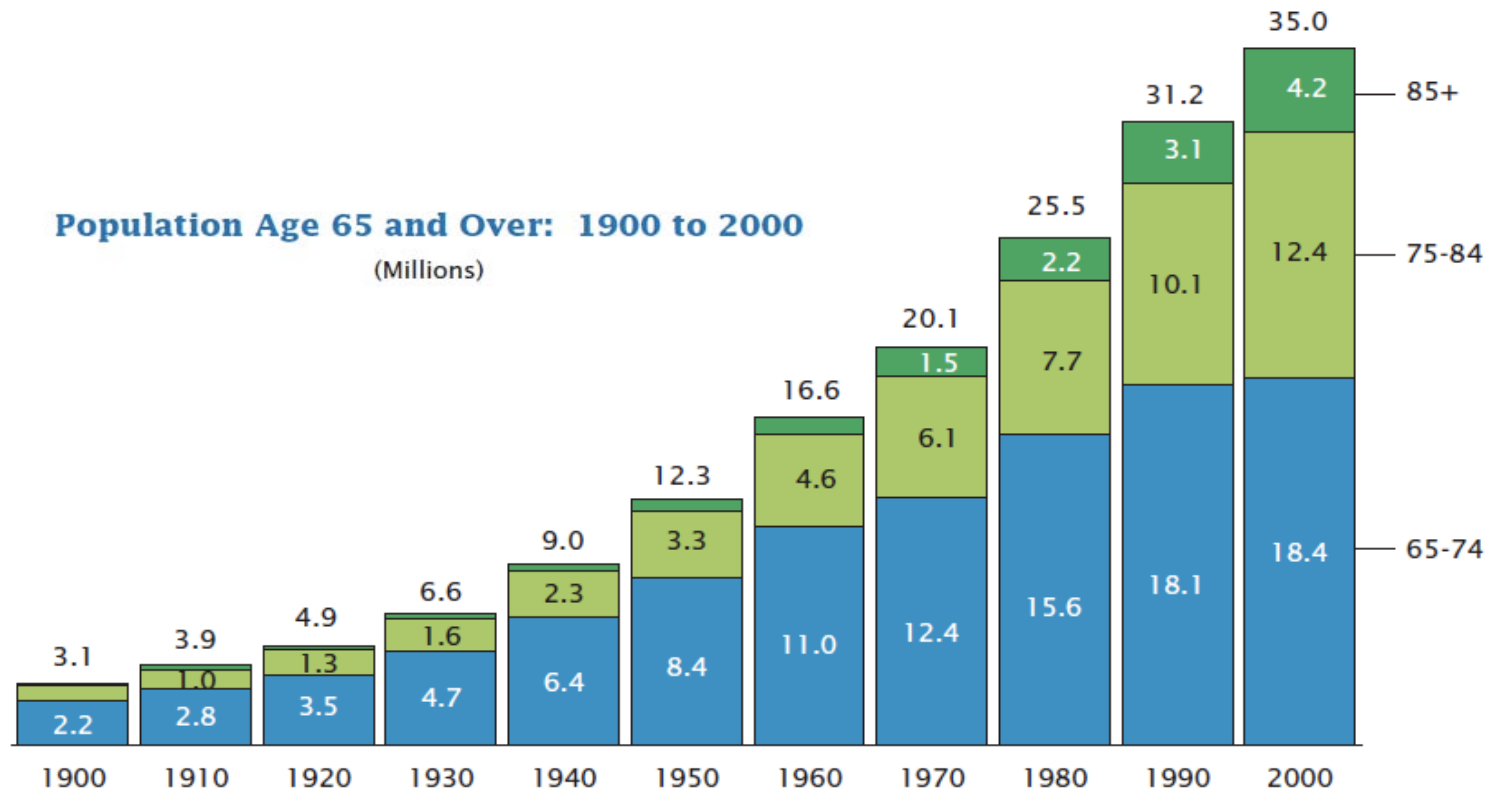
**Percent Distribution of the Total Population
by Age: 1900 to 2000**



Source: U.S. Census Bureau, decennial census of population, 1900 to 2000.



Composition of the Population



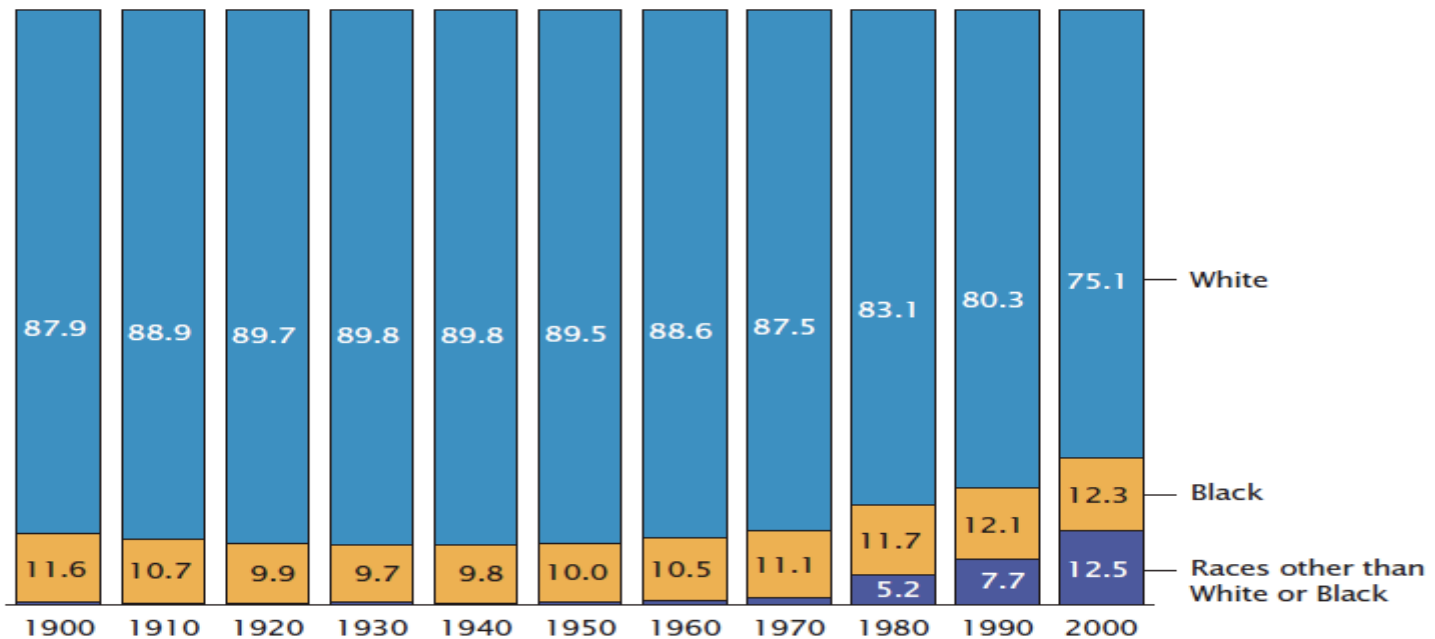
Source: U.S. Census Bureau, decennial census of population, 1900 to 2000.



Composition of the Population

Distribution of Total Population by Race: 1900 to 2000

(Percent)



Note: In 2000, the percent distribution is based on the reporting of race alone for Whites and Blacks.
Source: U.S. Census Bureau, decennial census of population, 1900 to 2000.



FOUNDATIONS OF PRACTICE

IN COMMUNITY DEVELOPMENT

LEVEL 1

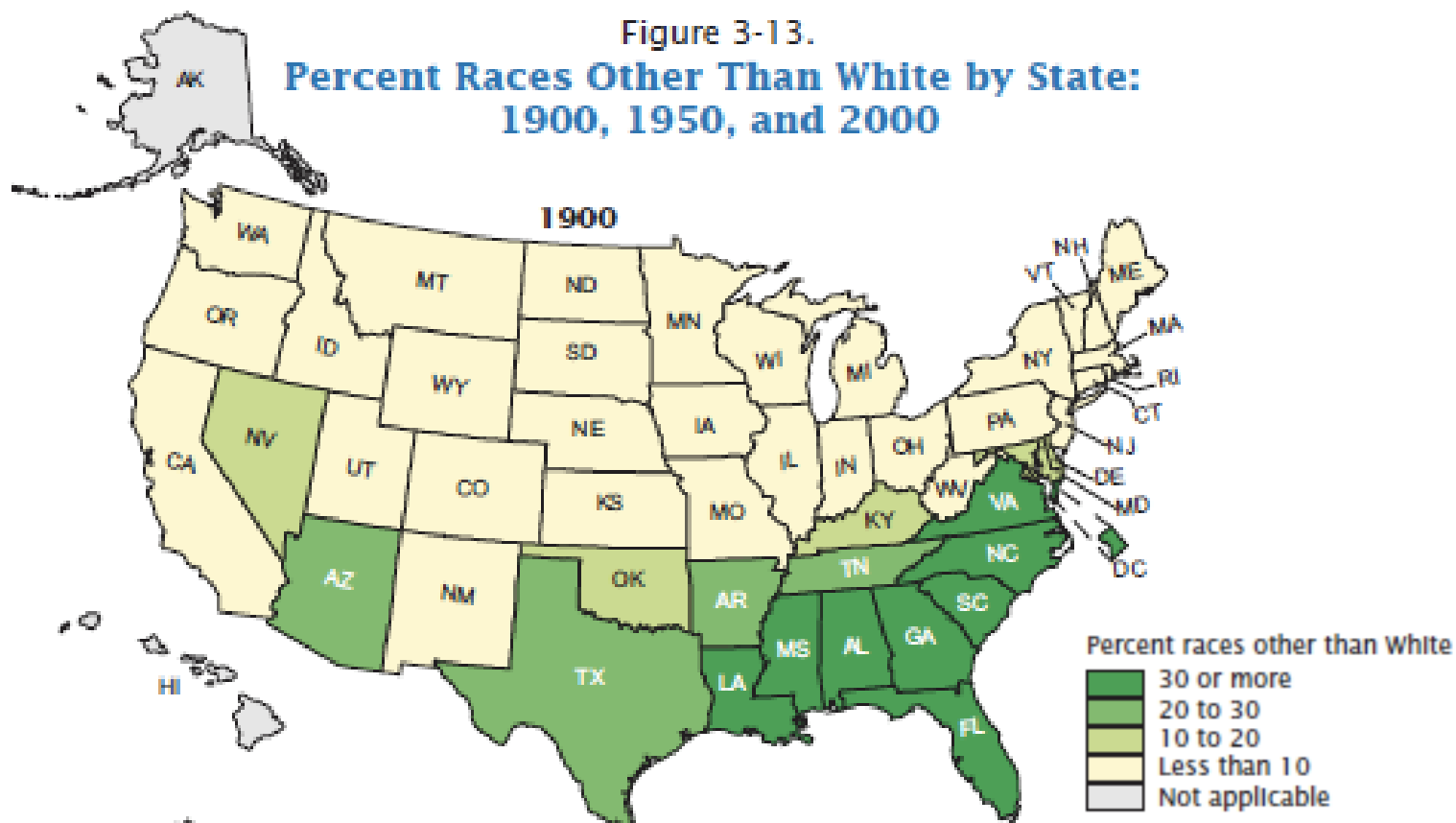
1

Understanding Communities and Their Dynamics

Composition of the Population

Figure 3-13.

**Percent Races Other Than White by State:
1900, 1950, and 2000**





FOUNDATIONS OF PRACTICE

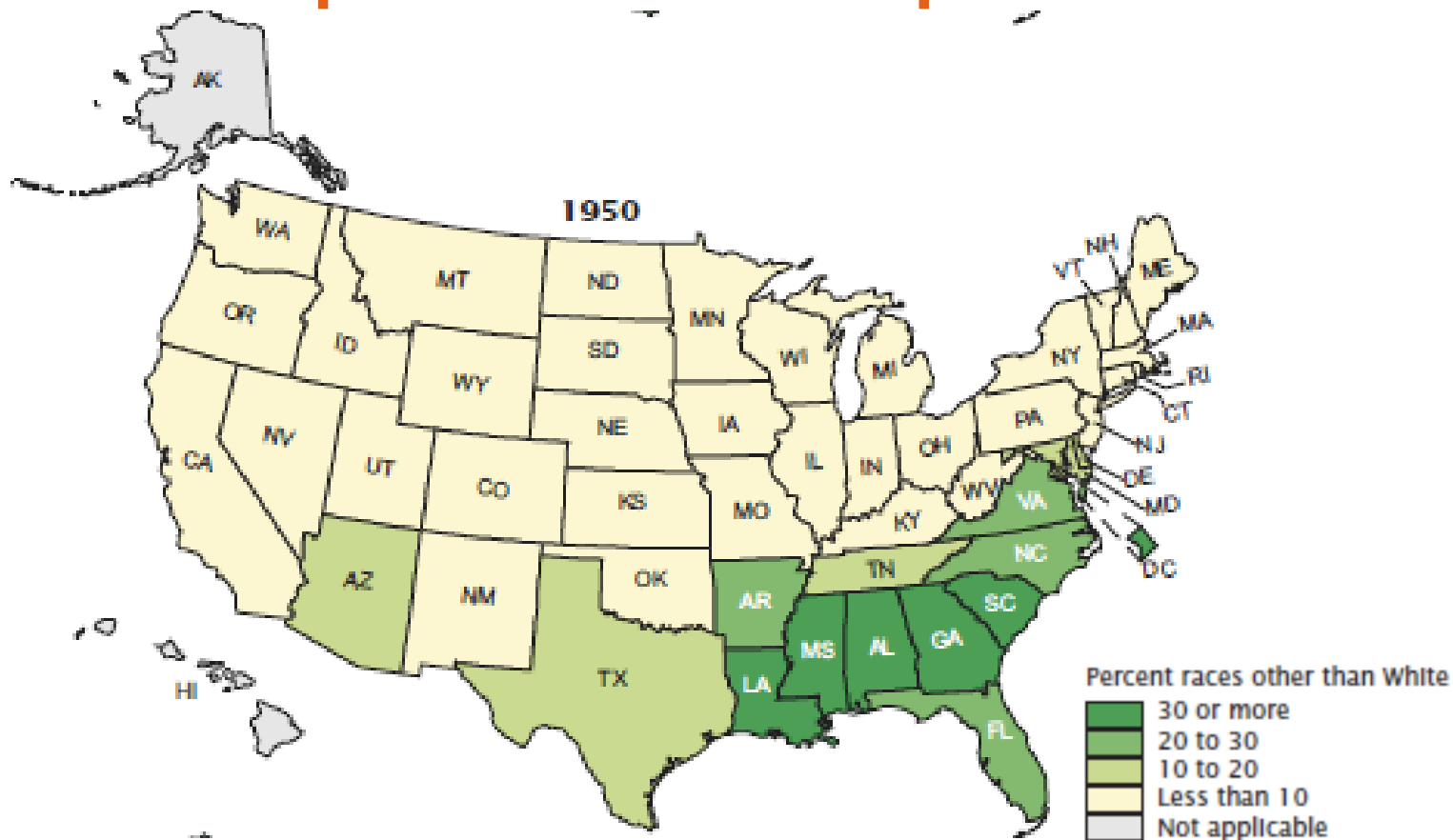
IN COMMUNITY DEVELOPMENT

LEVEL

1

Understanding Communities and Their Dynamics

Composition of the Population





FOUNDATIONS OF PRACTICE

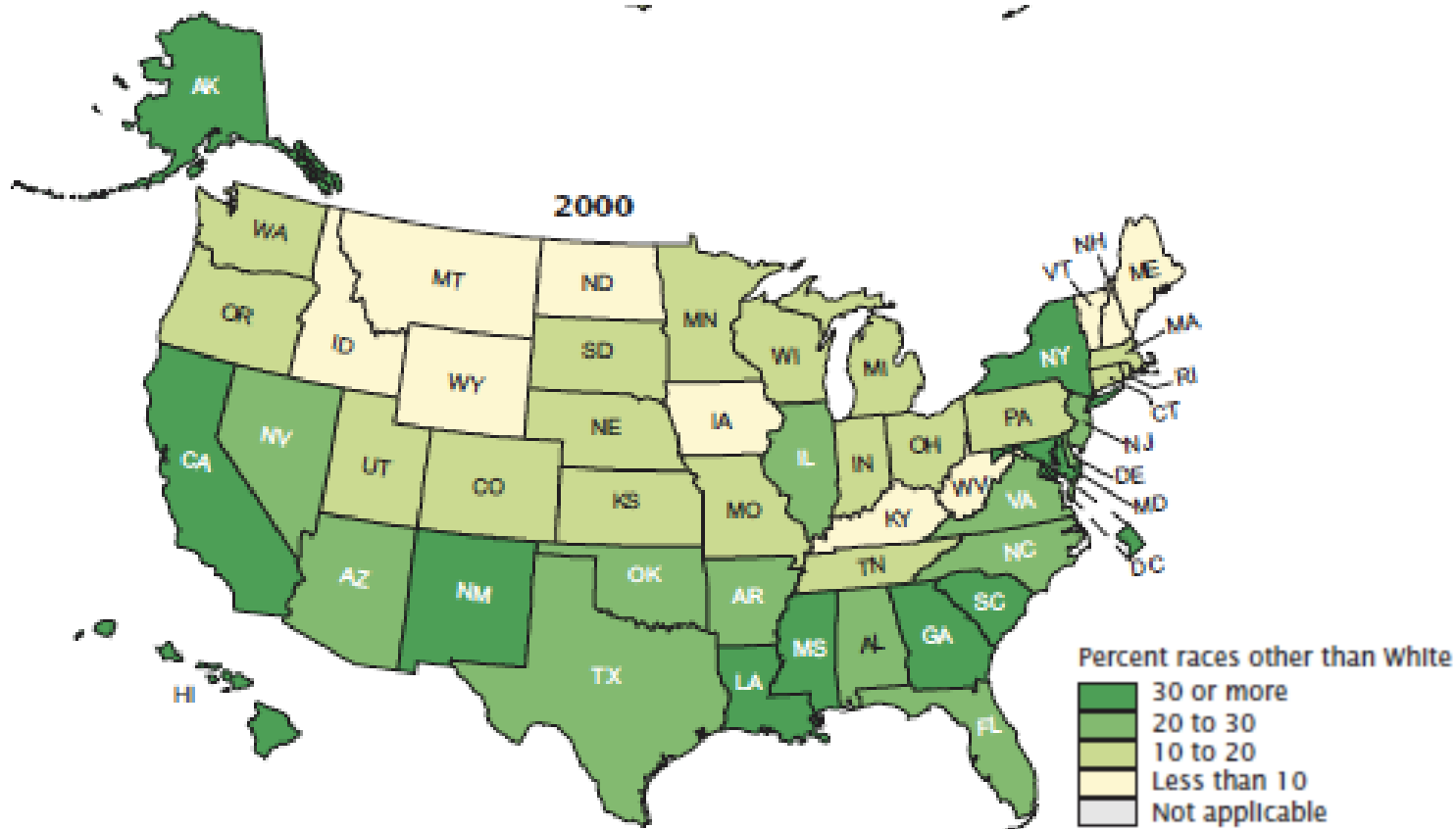
IN COMMUNITY DEVELOPMENT

LEVEL

1

Understanding Communities and Their Dynamics

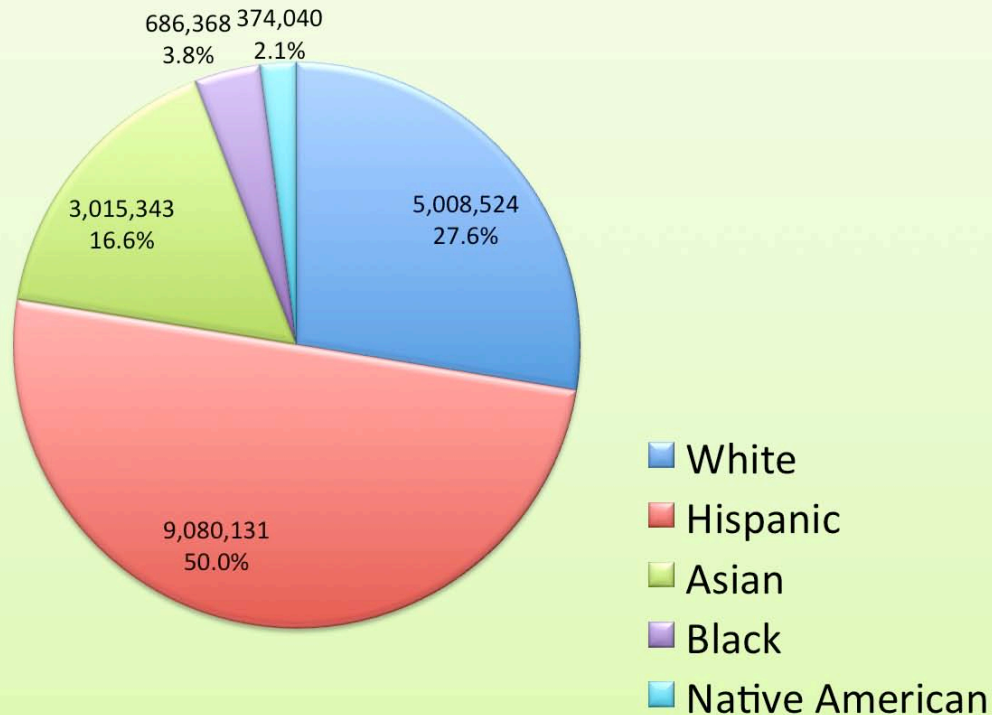
Composition of the Population





Composition of the Population: Western U.S.

Figure 7: Population Changes from 1980-2000 for the Western Region
(N=18, 164, 406)





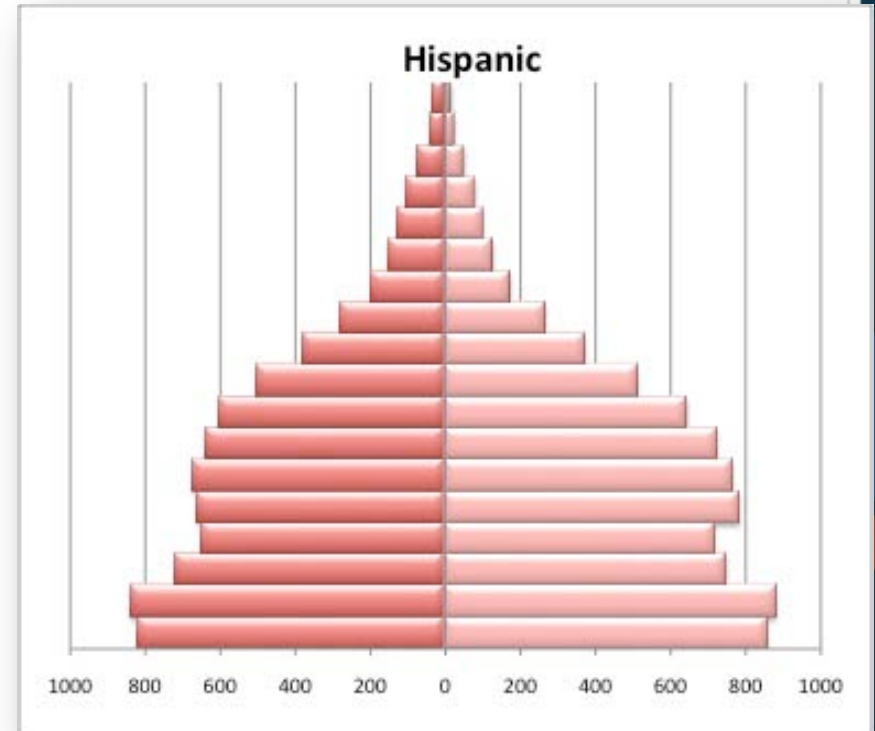
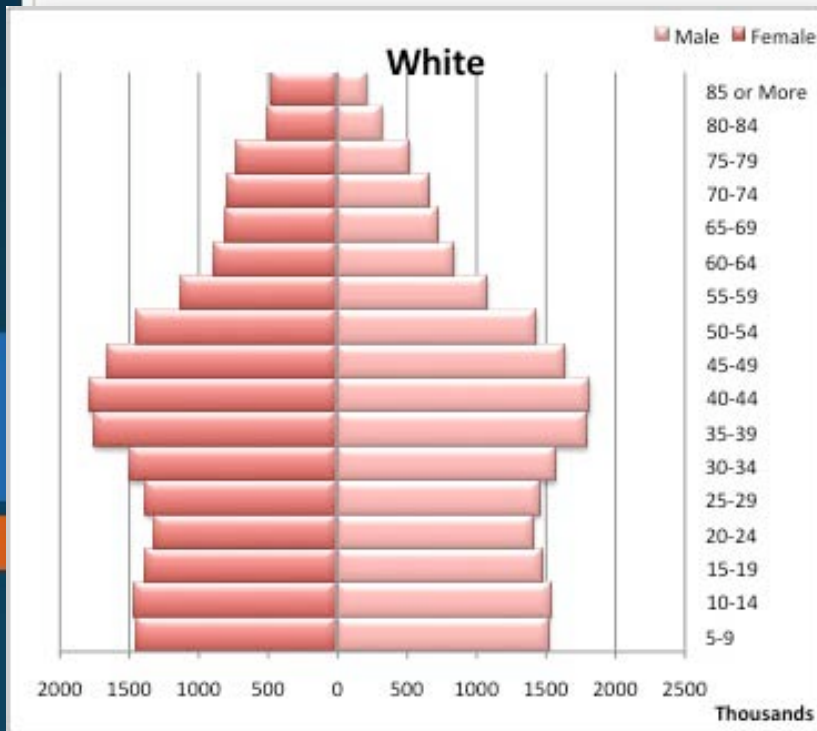
FOUNDATIONS OF PRACTICE

IN COMMUNITY DEVELOPMENT

LEVEL 1

Understanding Communities and Their Dynamics

Composition of the Population: Western U.S.





FOUNDATIONS OF PRACTICE

IN COMMUNITY DEVELOPMENT

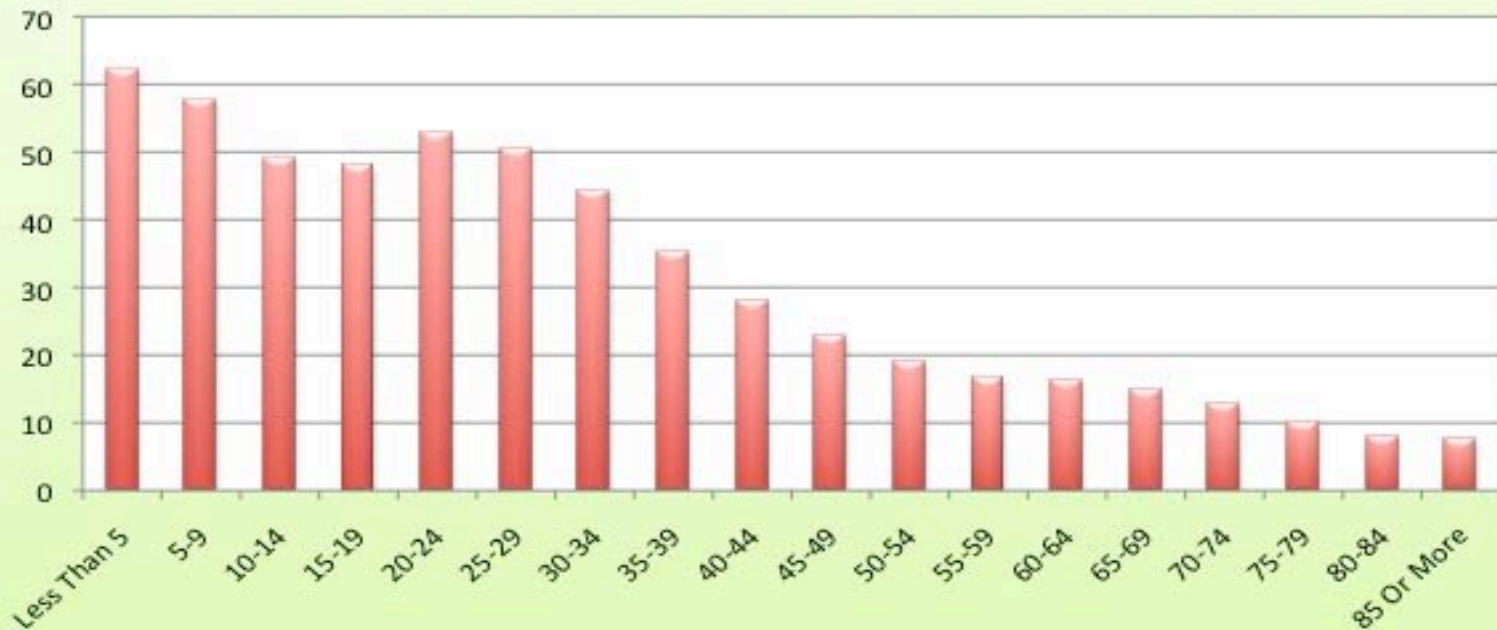
LEVEL

1

Understanding Communities and Their Dynamics

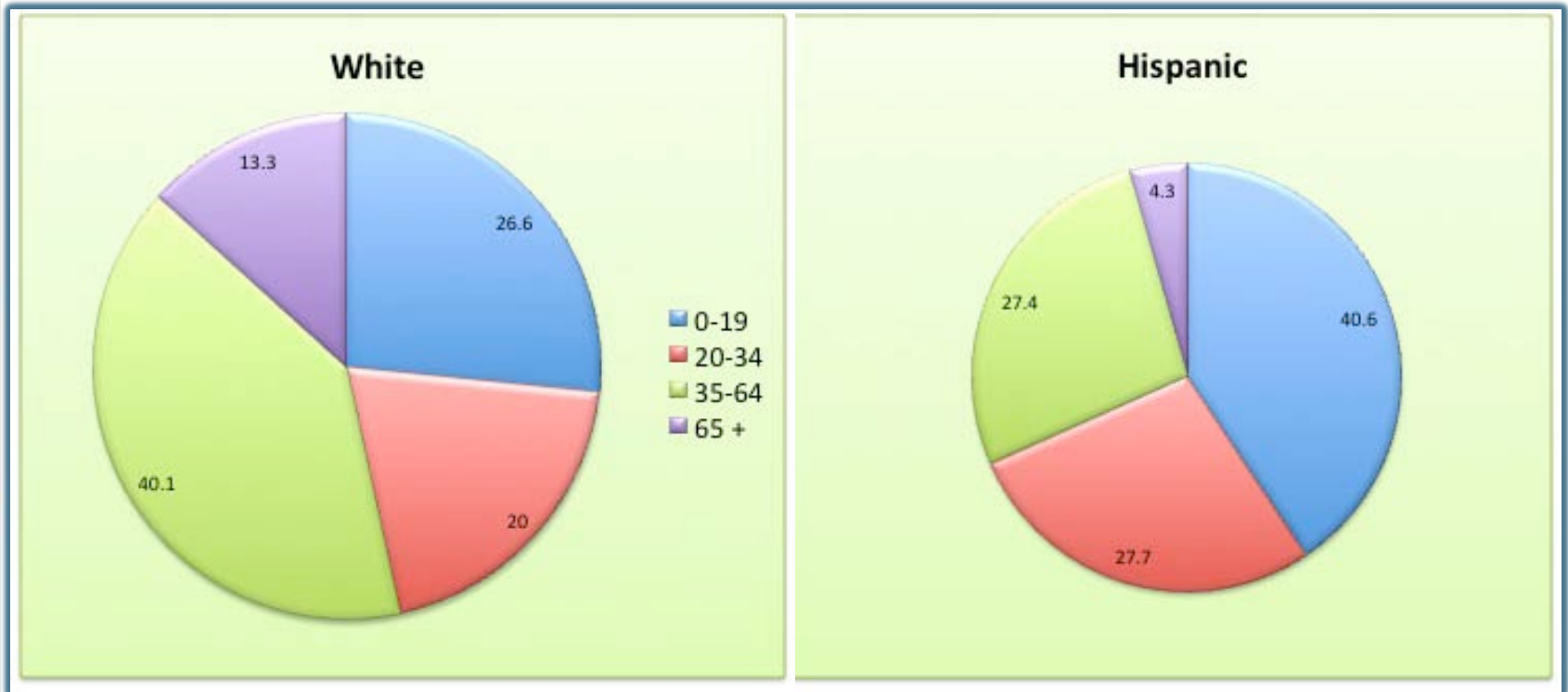
Composition of the Population: Western U.S.

Number of Hispanics Per 100 White People by Age in the Western Region, 2000





Composition of the Population: Western U.S.





Composition of the Population: U.S.

Year	(Resident population as of July 1. Numbers in thousands)					
	Non-Hispanic				Hispanic (any race)	Total
	White alone	Black alone	Asian alone	All other races		
2000	195,771	34,414	10,436	5,909	35,629	282,158
2010	200,853	37,985	14,083	7,586	49,726	310,233
2020	205,255	41,847	18,308	9,612	66,365	341,387
2030	207,217	45,461	22,991	11,904	85,931	373,504
2040	206,065	48,780	28,064	14,523	108,223	405,655
2050	203,347	51,949	33,418	17,503	132,792	439,010

Source: U.S. Census Bureau, 2008 National Projections



FOUNDATIONS OF PRACTICE

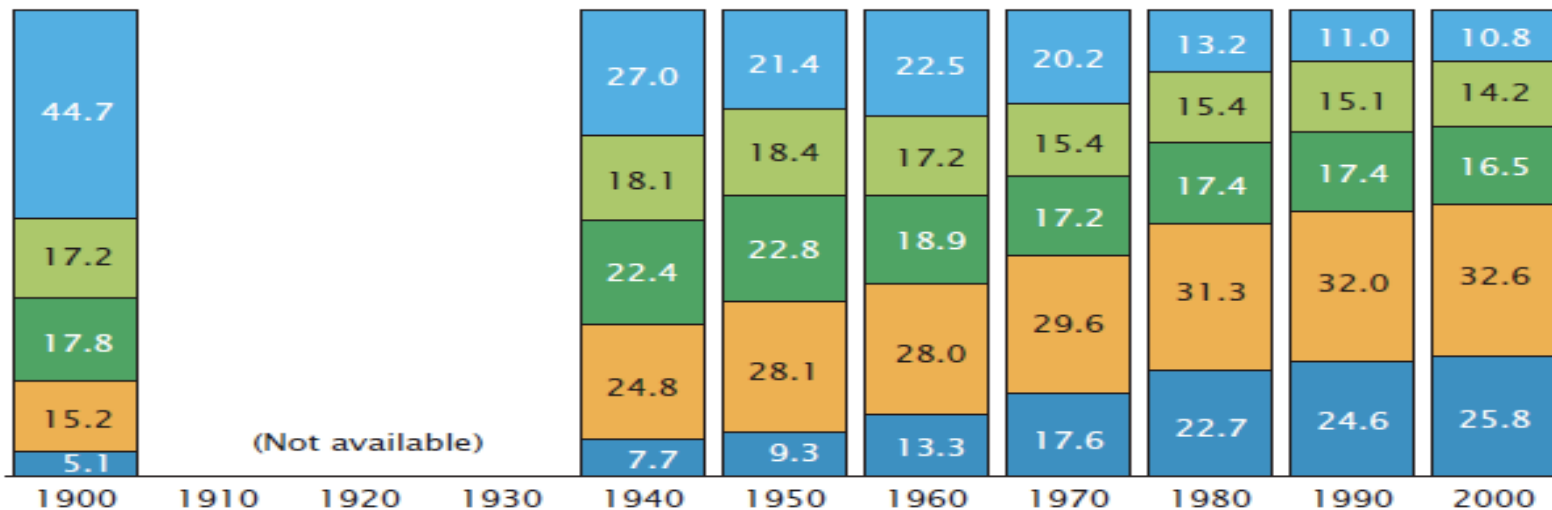
IN COMMUNITY DEVELOPMENT

LEVEL 1 Understanding Communities and Their Dynamics

Composition of the Population: U.S.

**Distribution of Households by Size:
1900 and 1940 to 2000**
(Percent)

- 5-or-more-person
- 4-person
- 3-person
- 2-person
- 1-person



Source: U.S. Census Bureau, decennial census of population, 1900, and decennial census of housing, 1940 to 2000.



FOUNDATIONS OF PRACTICE

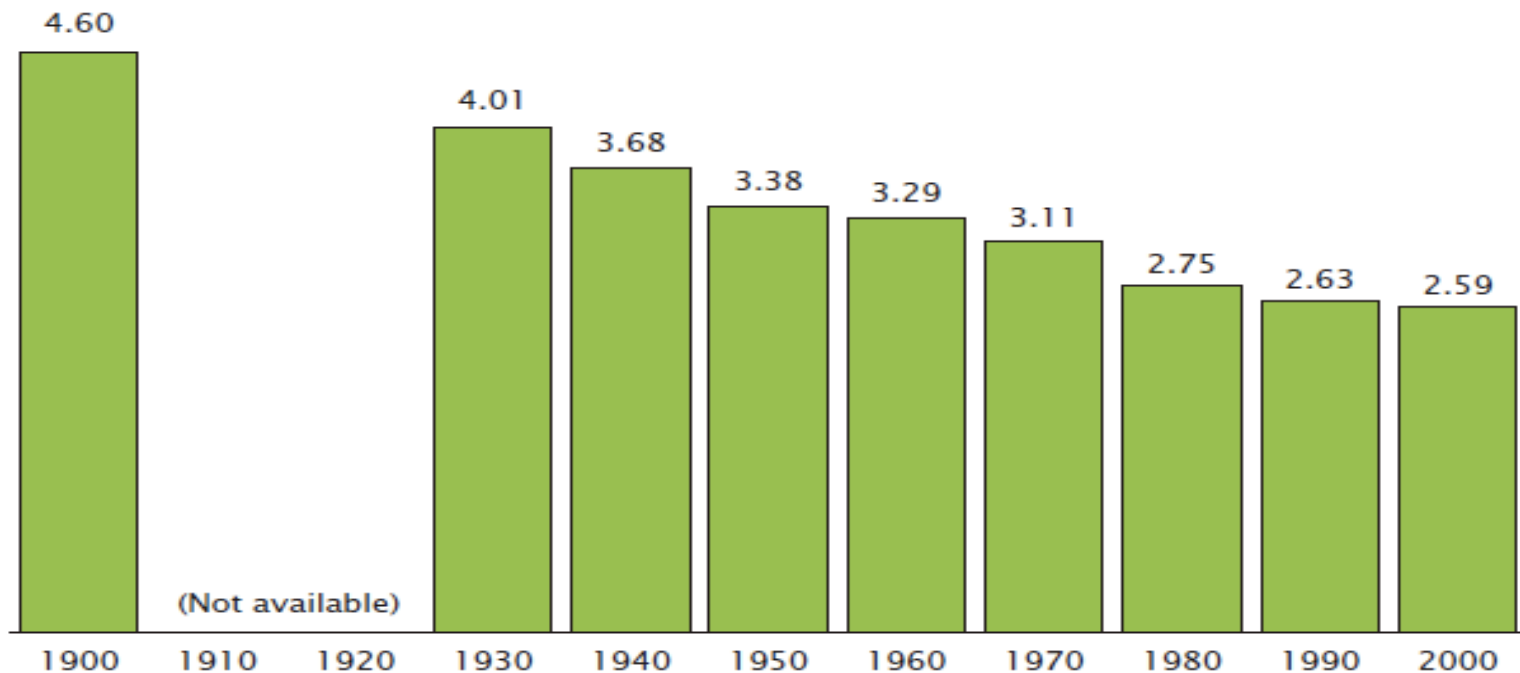
IN COMMUNITY DEVELOPMENT

LEVEL 1 Understanding Communities and Their Dynamics

Composition of the Population: U.S.

Average Household Size: 1900 and 1930 to 2000

(People per household)



Source: U.S. Census Bureau, decennial census of population, 1900 and 1930 to 2000, and decennial census of housing, 1940.



FOUNDATIONS OF PRACTICE

IN COMMUNITY DEVELOPMENT

LEVEL

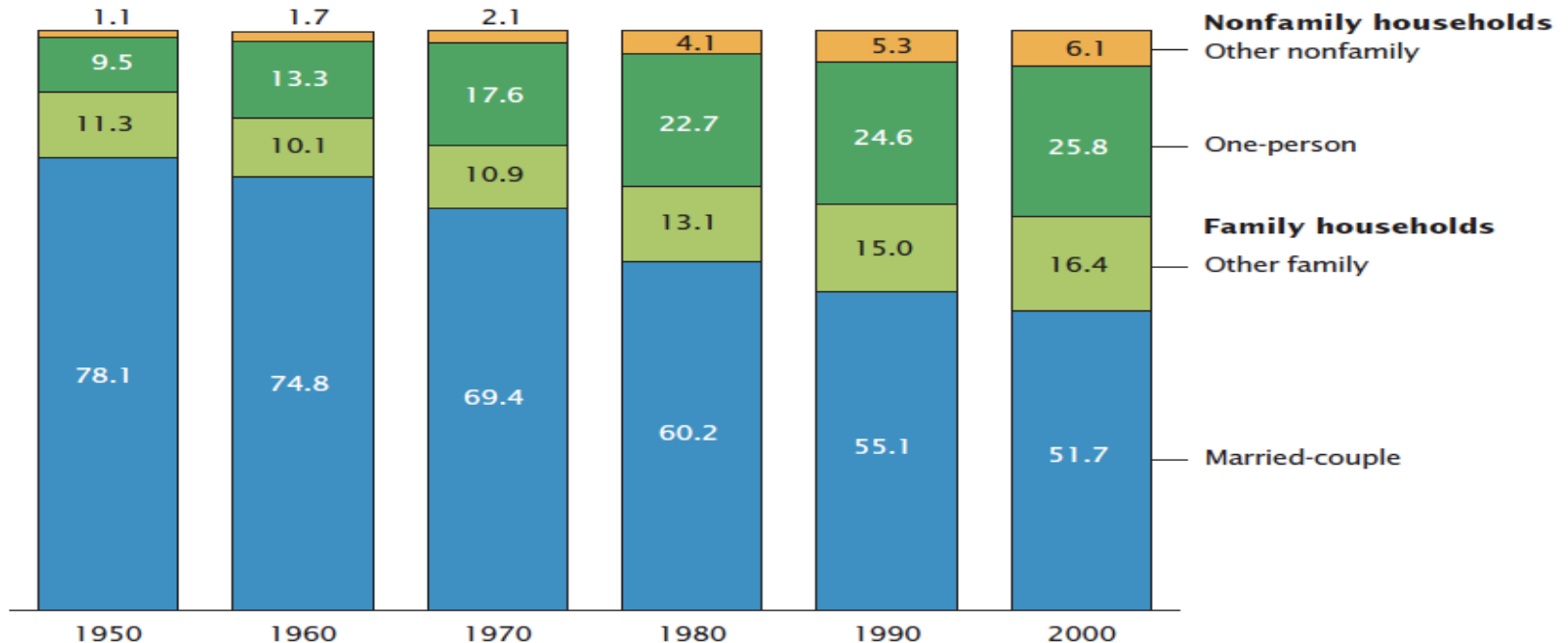
1

Understanding Communities and Their Dynamics

Composition of the Population: U.S.

Distribution of Households by Type: 1950 to 2000

(Percent)



Source: U.S. Census Bureau, decennial census of population, 1950 to 2000, and decennial census of housing, 1950 and 1960.



Data Sources

- www.census.gov
- State Data Centers and Universities
- WRDC Population Briefs & County Data
 - http://wrdc.usu.edu/htm/rural_resources/population



Contact Information

Don E. Albrecht

Director

Western Rural Development Center

Utah State University

8335 Old Main Hill

Logan UT 84322-8335

435.797.9732

don.albrecht@usu.edu



Looking Ahead: Session Three

Community Economics

Instructors:
Stephan Goetz &
Walt Whitmer





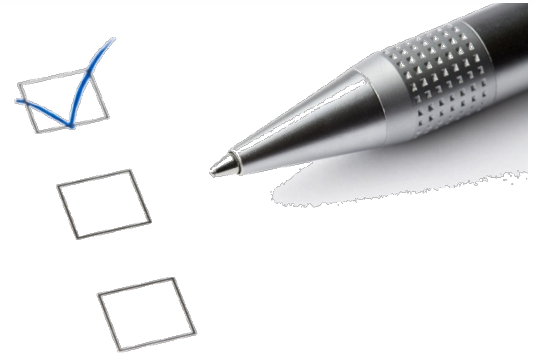
Homework Questions: Session Three

- How has the economy in your community changed in the last five years?
- How have these changes been addressed?





Evaluation



Please take a few minutes to help us improve these sessions by completing the short survey:

http://www.surveymonkey.com/s.aspx?sm=j_2br8vlQvrqUa4t9UcU2F7Q_3d_3d