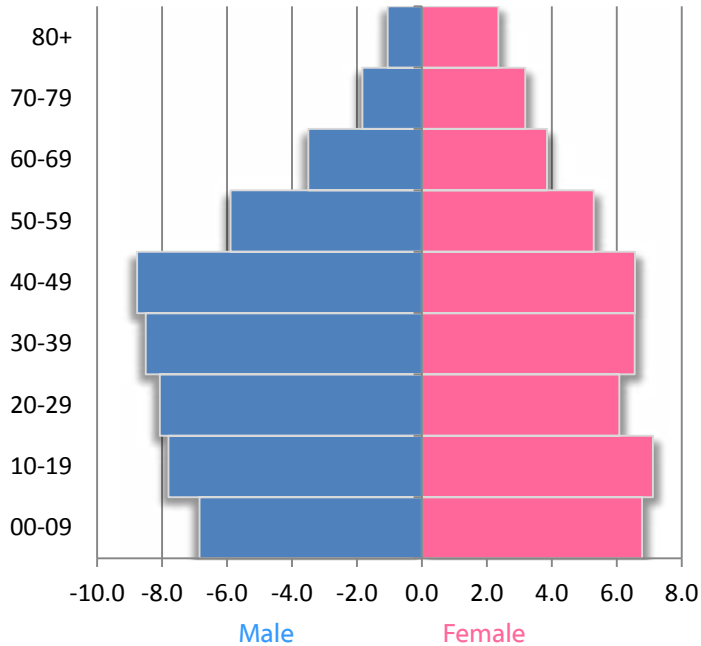


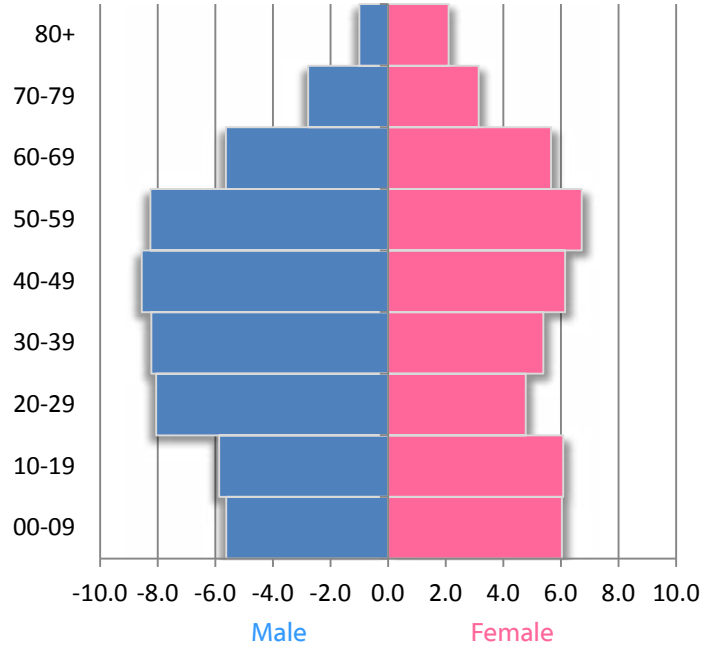
## PROFILE

Total Population	2000	2010	2020
Source: U.S. Census Bureau	11,525	14,918	16,706

2000 POPULATION PYRAMID



2010 POPULATION PYRAMID



Source: U.S. Census Bureau

### Components of Population Change 2000-2009

TOTAL Change	294
Natural Increase	520
International	94
Domestic	-279

Source: U.S. Census Bureau, Population Estimates; Pop. Change includes residual

### Income & Poverty

	2000	2010
Median Household Income	\$28,615	\$32,216
Poverty Rate (Individuals)	20.3	21.7

Source: Small Area Income and Poverty Estimates

### Race/Ethnicity

	2000	2010
White, Non-Hispanic	44.8	43.3
Black, Non-Hispanic	49.3	49.5
Other	1.3	1.4
Hispanic	4.7	5.8

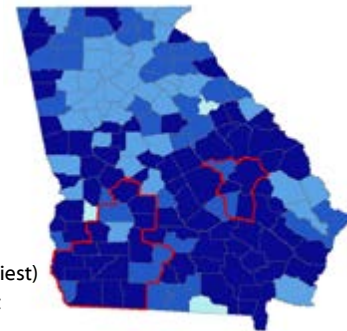
Source: U.S. Census Bureau

### Educational Attainment

	2000	2010
Less than high school	31.5	31.1
High school	37.8	41.2
Some college	21.0	18.2
Bachelor's or more	9.6	9.5

Source: EMSI 2011.1

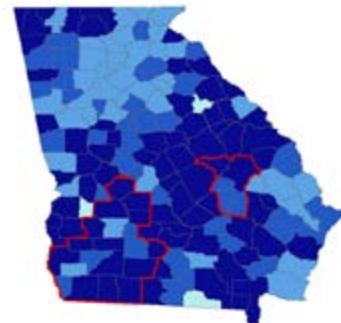
### MORTALITY (Premature Death)



- Highest (Healthiest)
- Second Highest
- Second Lowest
- Lowest
- SET Region

### MORBIDITY

(Poor or fair health, Poor physical health days, Poor mental health days, and low birthweight)

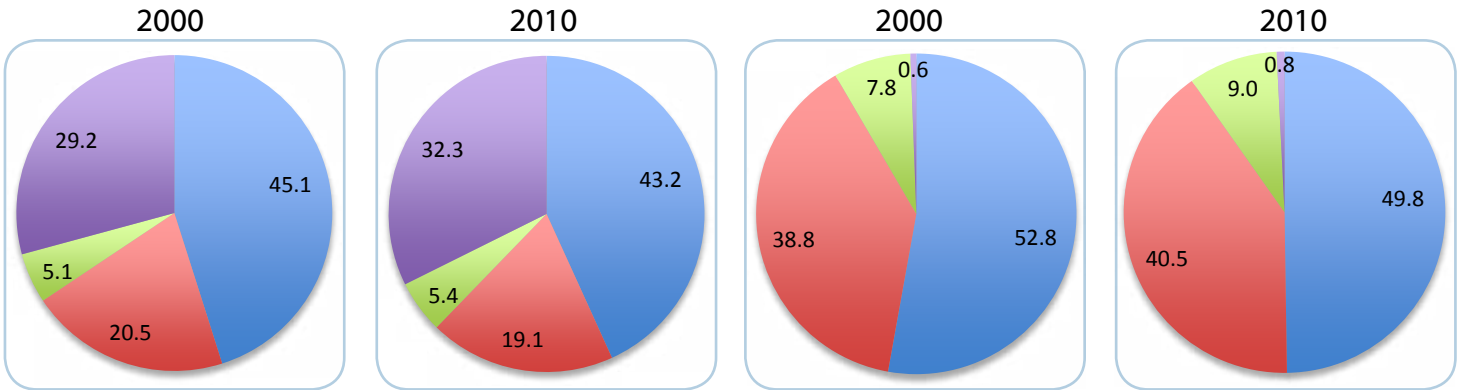


Source: County Health Rankings, University of Wisconsin Health Institute

## HOUSEHOLD TYPE

Households

Households with Children Under 18 Years



■ Married  
■ Single Female  
■ Single Male  
■ Non-Family

Occupied Housing Units	2000	2010	Households	2000	2010
Owner-Occupied	71.3	69.8	TOTAL Number	3,909	5,286
Renter-Occupied	28.7	30.2	Avg. persons	2.62	2.45

Source: U.S. Census Bureau