

PROFILE

Total Population

Source: U.S. Census Bureau

2000

23,932

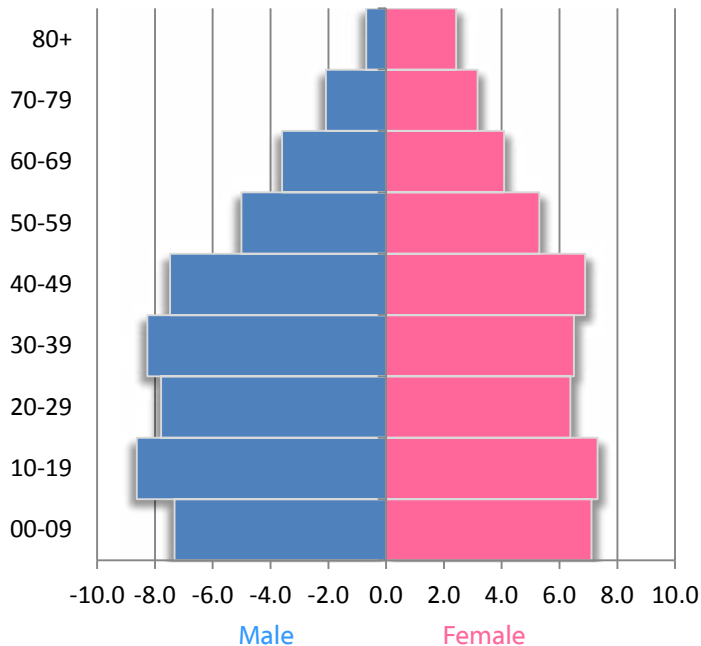
2010

23,498

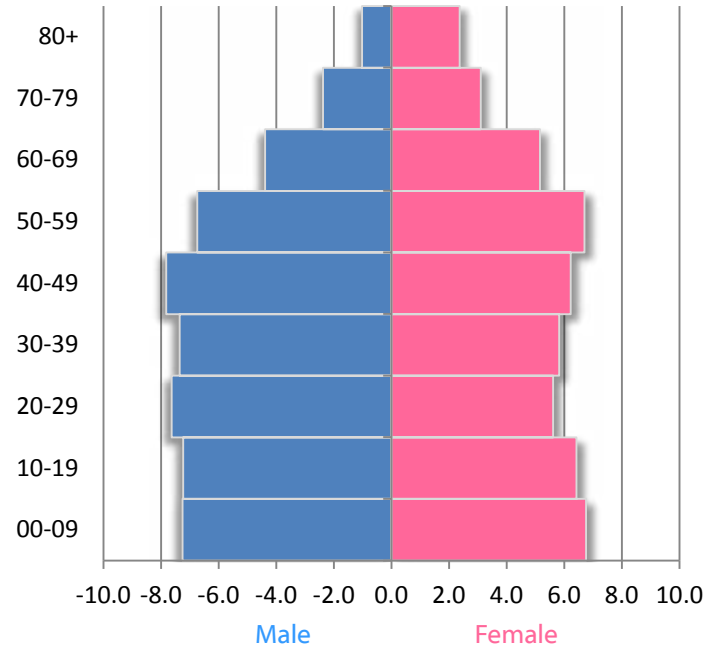
2020

24,071

2000 POPULATION PYRAMID



2010 POPULATION PYRAMID



Source: U.S. Census Bureau

Components of Population Change 2000-2009

TOTAL Change	-134
Natural Increase	964
International	213
Domestic	-1,180

Source: U.S. Census Bureau, Population Estimates; Pop. Change includes residual

Income & Poverty

	2000	2010
Median Household Income	\$26,961	\$31,094
Poverty Rate (Individuals)	21.2	26.6

Source: Small Area Income and Poverty Estimates

Race/Ethnicity

	2000	2010
White, Non-Hispanic	49.1	46.4
Black, Non-Hispanic	47.7	47.6
Other	1.1	1.7
Hispanic	2.1	4.4

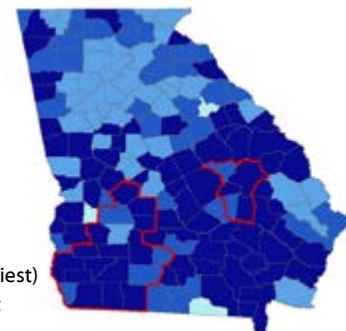
Source: U.S. Census Bureau

Educational Attainment

	2000	2010
Less than high school	34.7	32.1
High school	35.4	38.3
Some college	20.8	19.4
Bachelor's or more	9.1	10.2

Source: EMSI 2011.1

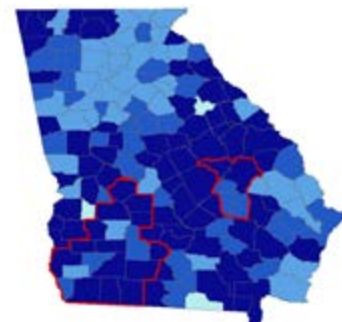
MORTALITY (Premature Death)



- Highest (Healthiest)
- Second Highest
- Second Lowest
- Lowest
- SET Region

MORBIDITY

(Poor or fair health, Poor physical health days, Poor mental health days, and low birthweight)

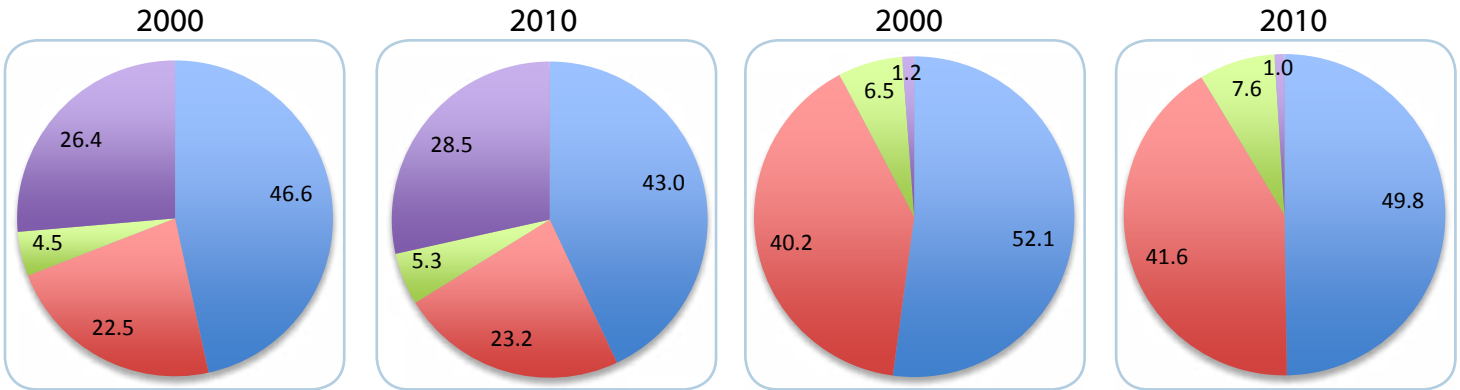


Source: County Health Rankings, University of Wisconsin Health Institute

HOUSEHOLD TYPE

Households

Households with Children Under 18 Years



■ Married
■ Single Female
■ Single Male
■ Non-Family

Occupied Housing Units	2000	2010	Households	2000	2010
Owner-Occupied	72.0	67.3	TOTAL Number	8,063	8,055
Renter-Occupied	28.0	32.7	Avg. persons	2.72	2.65

Source: U.S. Census Bureau