

PROFILE

Total Population

Source: U.S. Census Bureau

2000

33,200

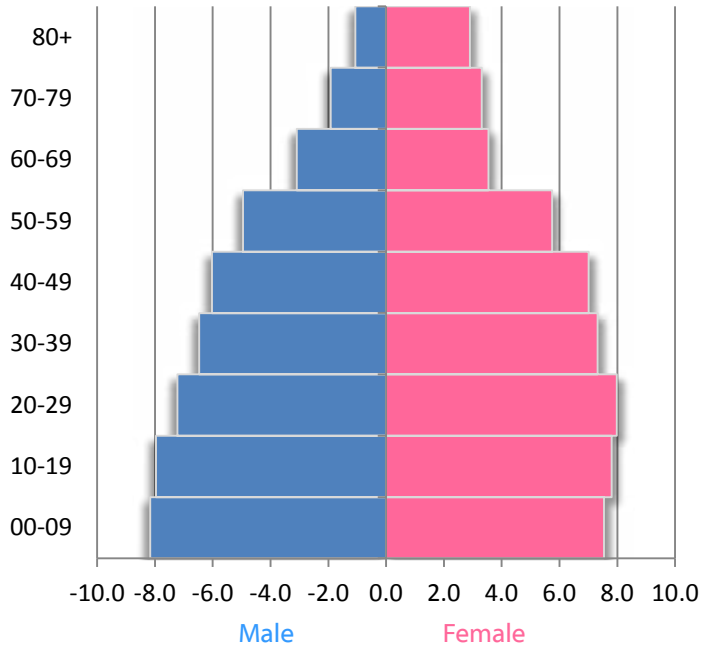
2010

32,819

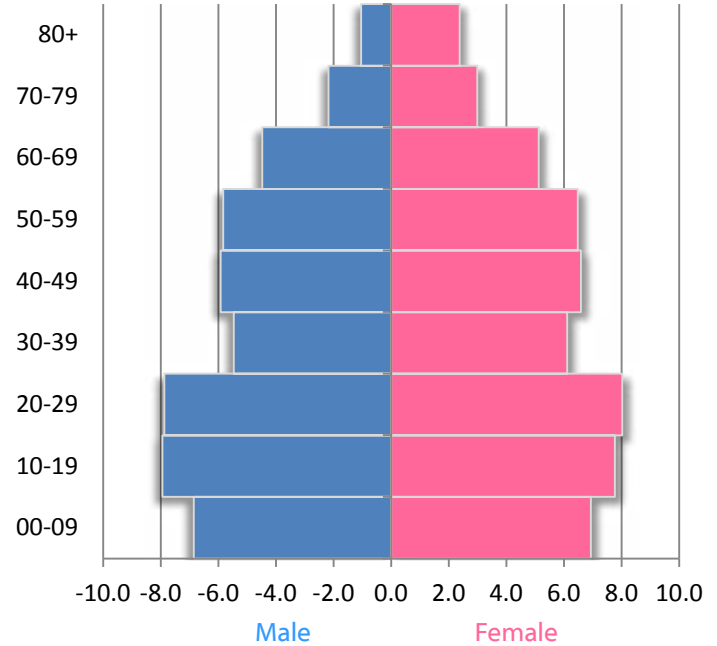
2020

33,485

2000 POPULATION PYRAMID



2010 POPULATION PYRAMID



Source: U.S. Census Bureau

Components of Population Change 2000-2009

TOTAL Change	-1,116
Natural Increase	1,515
International	270
Domestic	-2,726

Source: U.S. Census Bureau, Population Estimates; Pop. Change includes residual

Income & Poverty

	2000	2010
Median Household Income	\$30,906	\$31,871
Poverty Rate (Individuals)	19.5	28.8

Source: Small Area Income and Poverty Estimates

Race/Ethnicity

	2000	2010
White, Non-Hispanic	47.2	40.9
Black, Non-Hispanic	48.8	51.5
Other	1.3	2.4
Hispanic	2.7	5.2

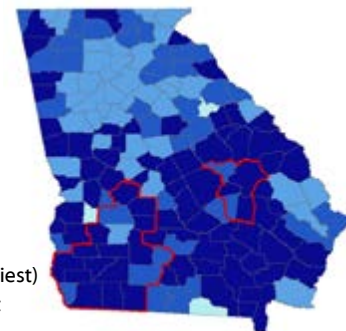
Source: U.S. Census Bureau

Educational Attainment

	2000	2010
Less than high school	30.1	25.0
High school	30.2	32.8
Some college	20.4	23.7
Bachelor's or more	19.3	18.5

Source: EMSI 2011.1

MORTALITY (Premature Death)



- Highest (Healthiest)
- Second Highest
- Second Lowest
- Lowest
- SET Region

MORBIDITY

(Poor or fair health, Poor physical health days, Poor mental health days, and low birthweight)

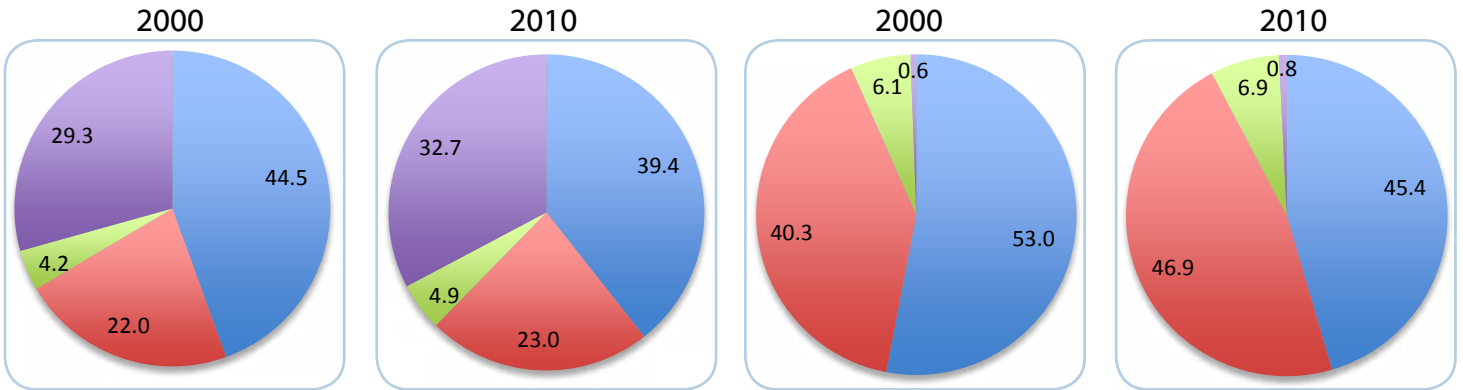


Source: County Health Rankings, University of Wisconsin Health Institute

HOUSEHOLD TYPE

Households

Households with Children Under 18 Years



■ Married
■ Single Female
■ Single Male
■ Non-Family

Occupied Housing Units	2000	2010	Households	2000	2010
Owner-Occupied	64.0	57.1	TOTAL Number	12,025	12,123
Renter-Occupied	36.0	42.9	Avg. persons	2.64	2.55

Source: U.S. Census Bureau