

PROFILE

Total Population

Source: U.S. Census Bureau

2000

12,259

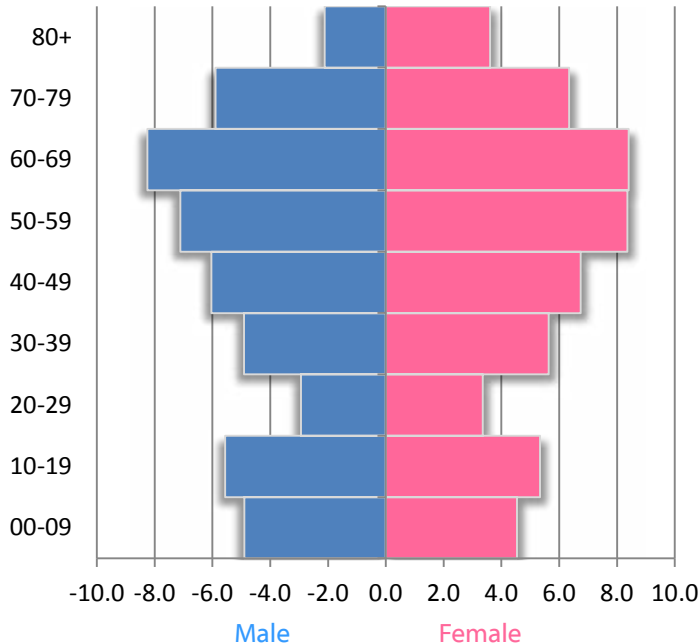
2010

12,330

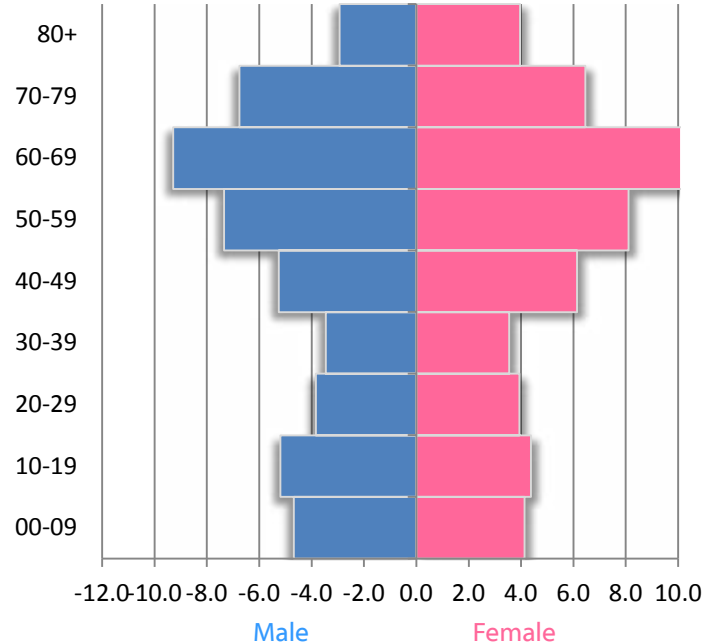
2020

12,556

2000 POPULATION PYRAMID



2010 POPULATION PYRAMID



Source: U.S. Census Bureau

Components of Population Change 2000-2009

TOTAL Change	727
Natural Increase	-592
International	55
Domestic	1,309

Source: U.S. Census Bureau, Population Estimates; Pop. Change includes residual

Income & Poverty	2000	2010
Median Household Income	\$37,562	\$46,320
Poverty Rate (Individuals)	11.9	14.3

Source: Small Area Income and Poverty Estimates

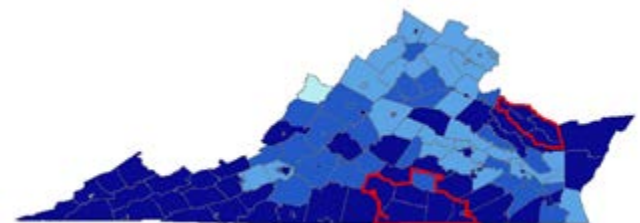
Race/Ethnicity	2000	2010
White, Non-Hispanic	71.8	70.1
Black, Non-Hispanic	26.4	25.2
Other	0.9	1.7
Hispanic	0.9	3.1

Source: U.S. Census Bureau

Educational Attainment	2000	2010
Less than high school	24.1	17.8
High school	31.0	27.6
Some college	23.3	34.4
Bachelor's or more	21.7	20.2

Source: EMSI 2011.1

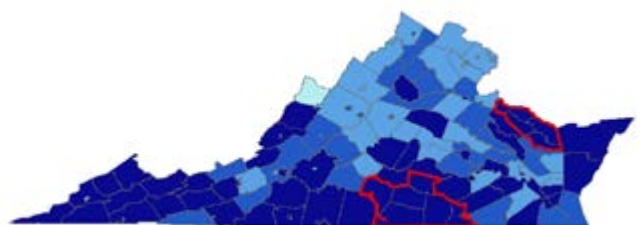
MORTALITY (Premature Death)



- Highest (Healthiest)
- Second Highest
- Second Lowest
- Lowest
- SET Region

MORBIDITY

(Poor or fair health, Poor physical health days, Poor mental health days, and low birthweight)

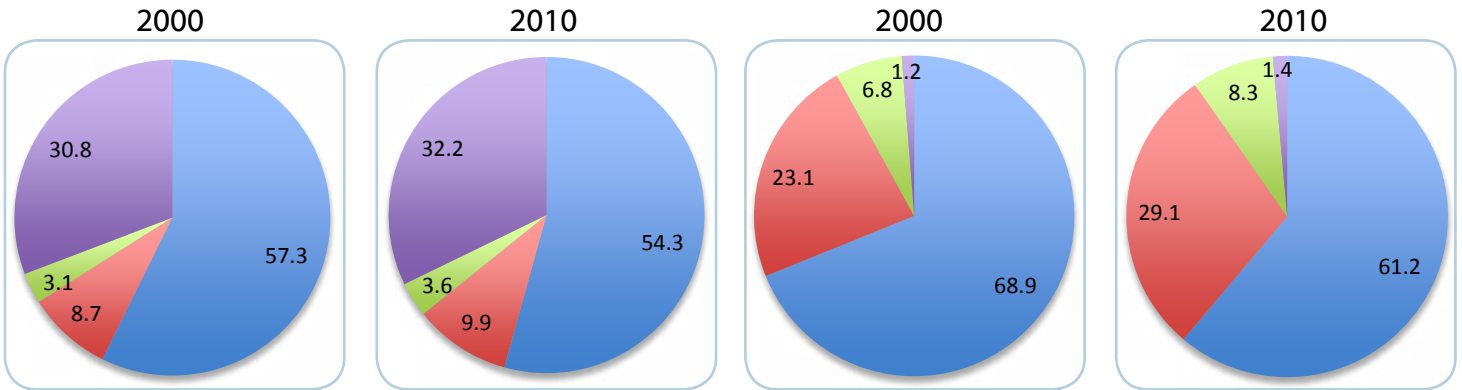


Source: County Health Rankings, University of Wisconsin Health Institute

HOUSEHOLD TYPE

Households

Households with Children Under 18 Years



■ Married
■ Single Female
■ Single Male
■ Non-Family

Occupied Housing Units	2000	2010	Households	2000	2010
Owner-Occupied	87.4	83.3	TOTAL Number	5,470	5,540
Renter-Occupied	12.6	16.7	Avg. persons	2.24	2.23

Source: U.S. Census Bureau