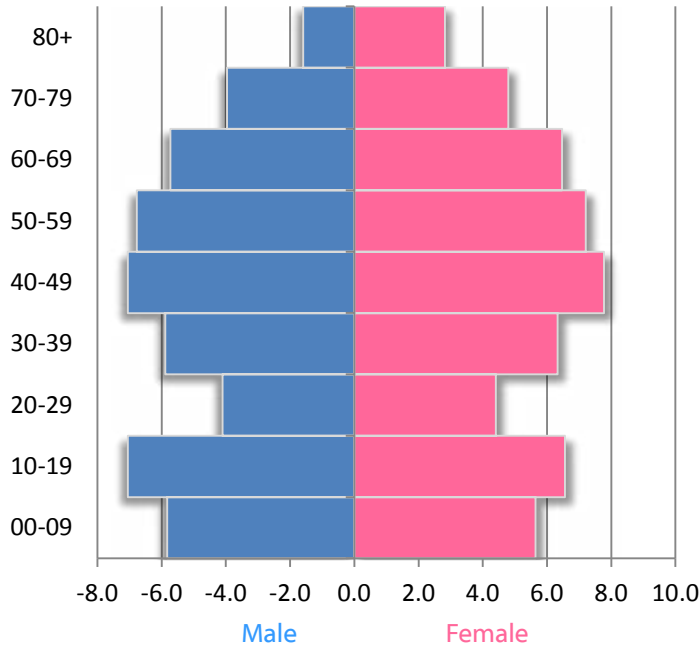


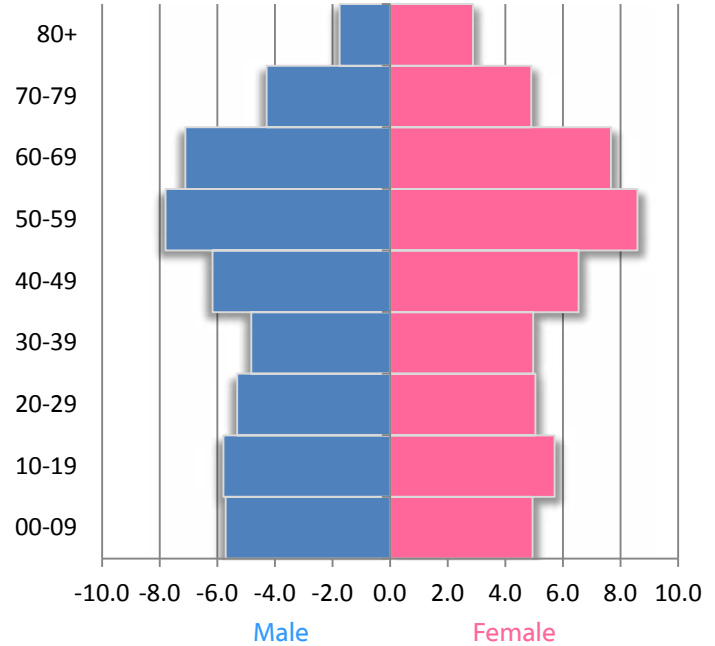
PROFILE

Total Population	2000	2010	2020
	Source: U.S. Census Bureau	16,718	17,454

2000 POPULATION PYRAMID



2010 POPULATION PYRAMID



Source: U.S. Census Bureau

Components of Population Change 2000-2009

TOTAL Change	968
Natural Increase	-250
International	177
Domestic	1,120

Source: U.S. Census Bureau, Population Estimates; Pop. Change includes residual

Income & Poverty

	2000	2010
Median Household Income	\$35,725	\$45,291
Poverty Rate (Individuals)	13.3	14.6

Source: Small Area Income and Poverty Estimates

Race/Ethnicity

	2000	2010
White, Non-Hispanic	64.1	63.5
Black, Non-Hispanic	30.7	27.8
Other	1.7	2.9
Hispanic	3.5	5.7

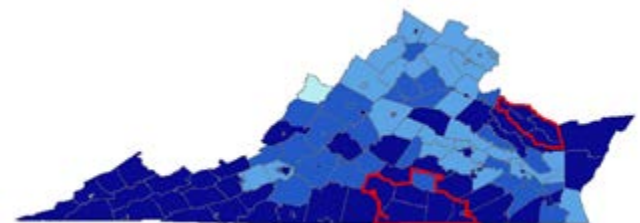
Source: U.S. Census Bureau

Educational Attainment

	2000	2010
Less than high school	30.7	22.8
High school	33.4	32.5
Some college	22.6	27.3
Bachelor's or more	13.3	17.4

Source: EMSI 2011.1

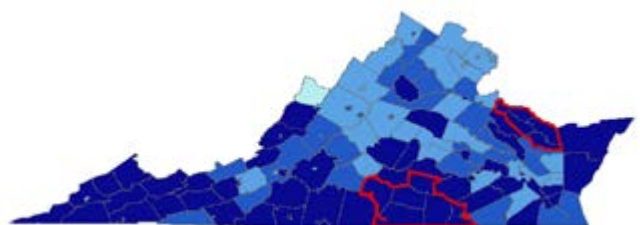
MORTALITY (Premature Death)



- Highest (Healthiest)
- Second Highest
- Second Lowest
- Lowest
- SET Region

MORBIDITY

(Poor or fair health, Poor physical health days, Poor mental health days, and low birthweight)

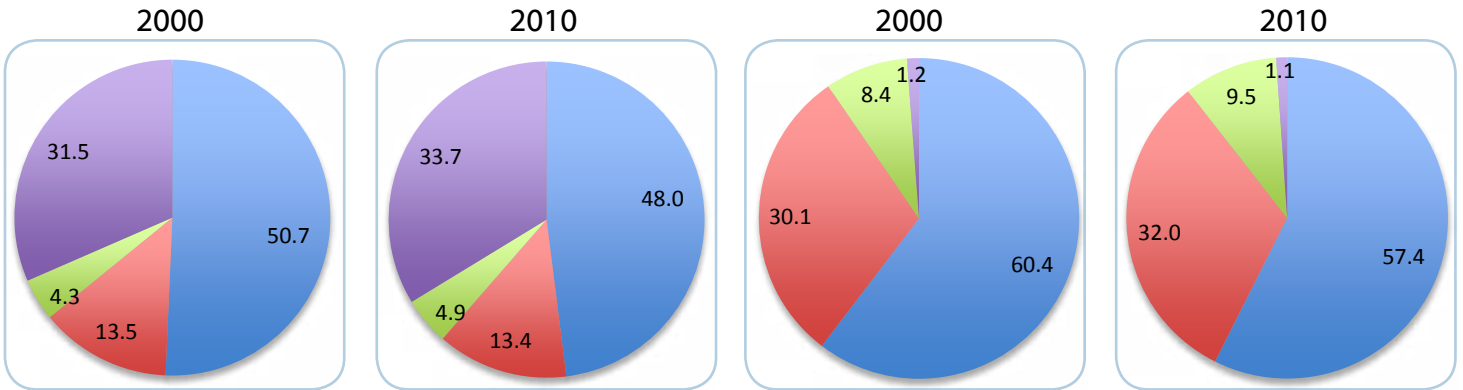


Source: County Health Rankings, University of Wisconsin Health Institute

HOUSEHOLD TYPE

Households

Households with Children Under 18 Years



■ Married
■ Single Female
■ Single Male
■ Non-Family

Occupied Housing Units	2000	2010	Households	2000	2010
Owner-Occupied	79.2	76.5	TOTAL Number	6,846	7,310
Renter-Occupied	20.8	23.5	Avg. persons	2.43	2.38

Source: U.S. Census Bureau