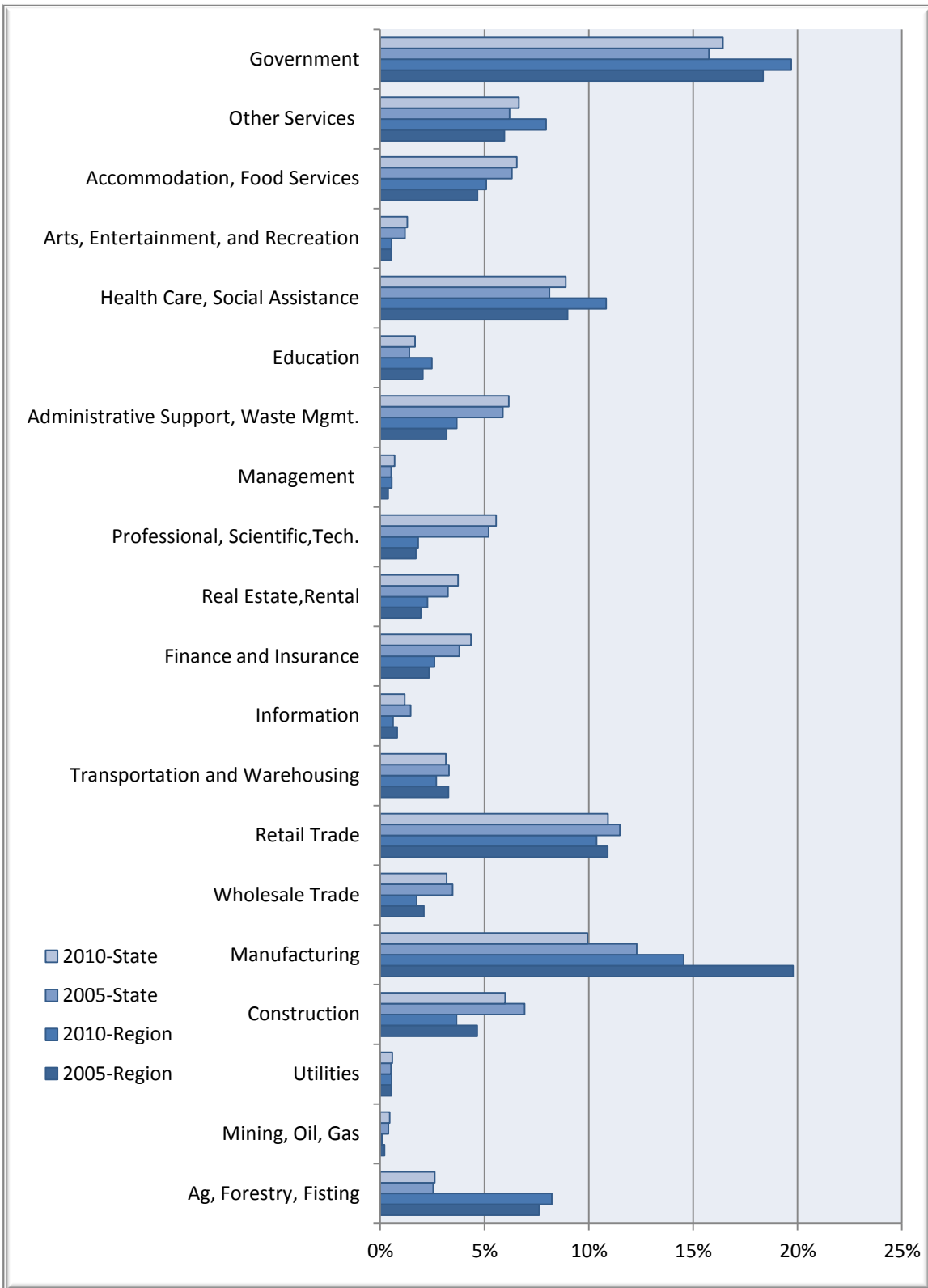


Percent of Jobs by Industry

West Alabama Region
Alabama

Businesses & Industries



West Alabama Regional Data

Description	2005 Jobs	2010 Jobs	Change	% Change	2011 Wages, Salaries, & Proprietor Earnings	2011 Establishments
Agriculture, Forestry, Fishing and Hunting	62,969	64,556	1,587	3%	\$24,986	1,408
Mining, Quarrying, and Oil and Gas Extraction	9,822	11,357	1,535	16%	\$64,107	318
Utilities	12,999	14,471	1,472	11%	\$80,948	377
Construction	171,394	147,637	(23,757)	(14%)	\$42,392	10,260
Manufacturing	304,666	244,912	(59,754)	(20%)	\$48,910	5,132
Wholesale Trade	86,027	78,506	(7,521)	(9%)	\$56,636	8,754
Retail Trade	284,635	269,252	(15,383)	(5%)	\$24,620	18,420
Transportation and Warehousing	81,730	77,778	(3,952)	(5%)	\$42,162	3,916
Information	36,220	28,926	(7,294)	(20%)	\$43,617	1,541
Finance and Insurance	93,939	107,267	13,328	14%	\$48,007	7,402
Real Estate and Rental and Leasing	80,459	92,182	11,723	15%	\$19,664	4,408
Professional, Scientific, and Technical Services	128,730	136,967	8,237	6%	\$58,631	12,119
Management of Companies and Enterprises	13,062	17,144	4,082	31%	\$72,151	1,332
Administrative and Support and Waste Management and Remediation Services	145,566	151,878	6,312	4%	\$20,787	5,536
Educational Services	34,695	41,175	6,480	19%	\$24,133	862
Health Care and Social Assistance	200,901	219,178	18,277	9%	\$42,531	10,142
Arts, Entertainment, and Recreation	29,605	32,183	2,578	9%	\$12,921	1,113
Accommodation and Food Services	156,521	161,503	4,982	3%	\$15,164	8,300
Other Services (except Public Administration)	153,658	164,074	10,416	7%	\$20,791	9,255
Government	390,256	405,095	14,839	4%	\$42,891	5,887
Total	2,477,855	2,466,042	-11,813	0	36,708	116,480

Source: EMSI Complete Employment - 4th Quarter 2010

Alabama State Data

Description	2005 Jobs	2010 Jobs	Change	% Change	2011 Wages, Salaries, & Proprietor Earnings	2011 Establishments
Agriculture, Forestry, Fishing and Hunting	62,969	64,556	1,587	3%	\$24,986	1,408
Mining, Quarrying, and Oil and Gas Extraction	9,822	11,357	1,535	16%	\$64,107	318
Utilities	12,999	14,471	1,472	11%	\$80,948	377
Construction	171,394	147,637	(23,757)	(14%)	\$42,392	10,260
Manufacturing	304,666	244,912	(59,754)	(20%)	\$48,910	5,132
Wholesale Trade	86,027	78,506	(7,521)	(9%)	\$56,636	8,754
Retail Trade	284,635	269,252	(15,383)	(5%)	\$24,620	18,420
Transportation and Warehousing	81,730	77,778	(3,952)	(5%)	\$42,162	3,916
Information	36,220	28,926	(7,294)	(20%)	\$43,617	1,541
Finance and Insurance	93,939	107,267	13,328	14%	\$48,007	7,402
Real Estate and Rental and Leasing	80,459	92,182	11,723	15%	\$19,664	4,408
Professional, Scientific, and Technical Services	128,730	136,967	8,237	6%	\$58,631	12,119
Management of Companies and Enterprises	13,062	17,144	4,082	31%	\$72,151	1,332
Administrative and Support and Waste Management and Remediation Services	145,566	151,878	6,312	4%	\$20,787	5,536
Educational Services	34,695	41,175	6,480	19%	\$24,133	862
Health Care and Social Assistance	200,901	219,178	18,277	9%	\$42,531	10,142
Arts, Entertainment, and Recreation	29,605	32,183	2,578	9%	\$12,921	1,113
Accommodation and Food Services	156,521	161,503	4,982	3%	\$15,164	8,300
Other Services (except Public Administration)	153,658	164,074	10,416	7%	\$20,791	9,255
Government	390,256	405,095	14,839	4%	\$42,891	5,887
Total	2,477,855	2,466,042	-11,813	0	36,708	116,480

Source: EMSI Complete Employment - 4th Quarter 2010