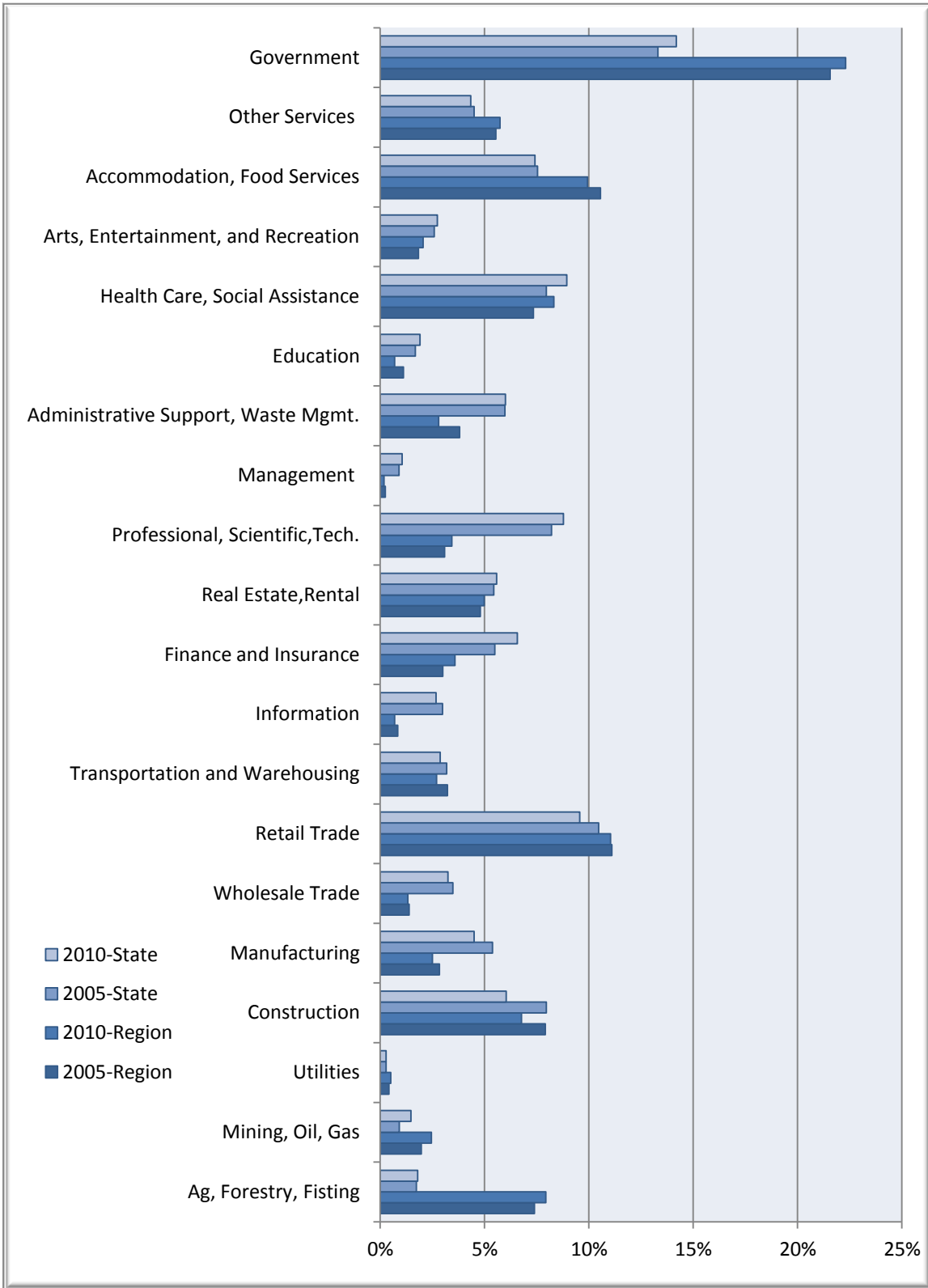


Percent of Jobs by Industry

Raton Basin REDD Region
Colorado



Businesses & Industries

Raton Basin REDD Regional Data

Description	2005 Jobs	2010 Jobs	Change	% Change	2011 Wages, Salaries, & Proprietor Earnings	2011 Establishments
Agriculture, Forestry, Fishing and Hunting	1,438	1,497	59	4%	\$26,618	19
Mining, Quarrying, and Oil and Gas Extraction	384	462	78	20%	\$52,316	29
Utilities	81	95	14	17%	\$58,644	14
Construction	1,540	1,277	(263)	(17%)	\$33,730	156
Manufacturing	553	473	(80)	(14%)	\$27,451	30
Wholesale Trade	269	251	(18)	(7%)	\$40,081	36
Retail Trade	2,159	2,083	(76)	(4%)	\$21,307	164
Transportation and Warehousing	628	511	(117)	(19%)	\$51,290	50
Information	165	130	(35)	(21%)	\$26,171	24
Finance and Insurance	584	675	91	16%	\$46,539	53
Real Estate and Rental and Leasing	934	941	7	1%	\$15,052	60
Professional, Scientific, and Technical Services	600	649	49	8%	\$30,321	86
Management of Companies and Enterprises	48	36	(12)	(25%)	\$17,230	7
Administrative and Support and Waste Management and Remediation Services	741	528	(213)	(29%)	\$14,869	38
Educational Services	216	131	(85)	(39%)	\$13,108	8
Health Care and Social Assistance	1,429	1,570	141	10%	\$31,955	95
Arts, Entertainment, and Recreation	358	388	30	8%	\$10,482	23
Accommodation and Food Services	2,054	1,875	(179)	(9%)	\$16,940	132
Other Services (except Public Administration)	1,079	1,082	3	0%	\$21,710	91
Government	4,194	4,207	13	0%	\$34,480	167
Total	19,454	18,861	-593	-0.03	28,669	1,281

Source: EMSI Complete Employment - 4th Quarter 2010

Colorado State Data

Description	2005 Jobs	2010 Jobs	Change	% Change	2011 Wages, Salaries, & Proprietor Earnings	2011 Establishments
Agriculture, Forestry, Fishing and Hunting	52,017	56,209	4,192	8%	\$24,366	1,402
Mining, Quarrying, and Oil and Gas Extraction	27,651	45,951	18,300	66%	\$77,561	1,556
Utilities	8,368	8,802	434	5%	\$84,064	412
Construction	238,666	188,514	(50,152)	(21%)	\$46,281	18,577
Manufacturing	161,224	140,749	(20,475)	(13%)	\$58,163	5,397
Wholesale Trade	104,379	101,441	(2,938)	(3%)	\$70,128	12,671
Retail Trade	313,734	298,804	(14,930)	(5%)	\$26,169	17,322
Transportation and Warehousing	95,386	89,737	(5,649)	(6%)	\$44,896	3,963
Information	89,571	83,503	(6,068)	(7%)	\$77,036	3,201
Finance and Insurance	164,543	205,108	40,565	25%	\$56,710	10,292
Real Estate and Rental and Leasing	163,212	174,419	11,207	7%	\$25,334	9,206
Professional, Scientific, and Technical Services	246,024	274,104	28,080	11%	\$63,287	29,394
Management of Companies and Enterprises	27,120	32,838	5,718	21%	\$117,969	1,653
Administrative and Support and Waste Management and Remediation Services	179,262	187,432	8,170	5%	\$29,089	9,968
Educational Services	50,374	59,777	9,403	19%	\$28,596	2,277
Health Care and Social Assistance	238,799	279,392	40,593	17%	\$42,510	13,756
Arts, Entertainment, and Recreation	77,561	85,629	8,068	10%	\$20,906	2,509
Accommodation and Food Services	226,213	231,677	5,464	2%	\$18,861	11,901
Other Services (except Public Administration)	134,800	135,366	566	0%	\$30,932	12,522
Government	399,158	443,146	43,988	11%	\$47,009	3,032
Total	2,998,064	3,122,598	124,534	0.04	43,391	171,011

Source: EMSI Complete Employment - 4th Quarter 2010