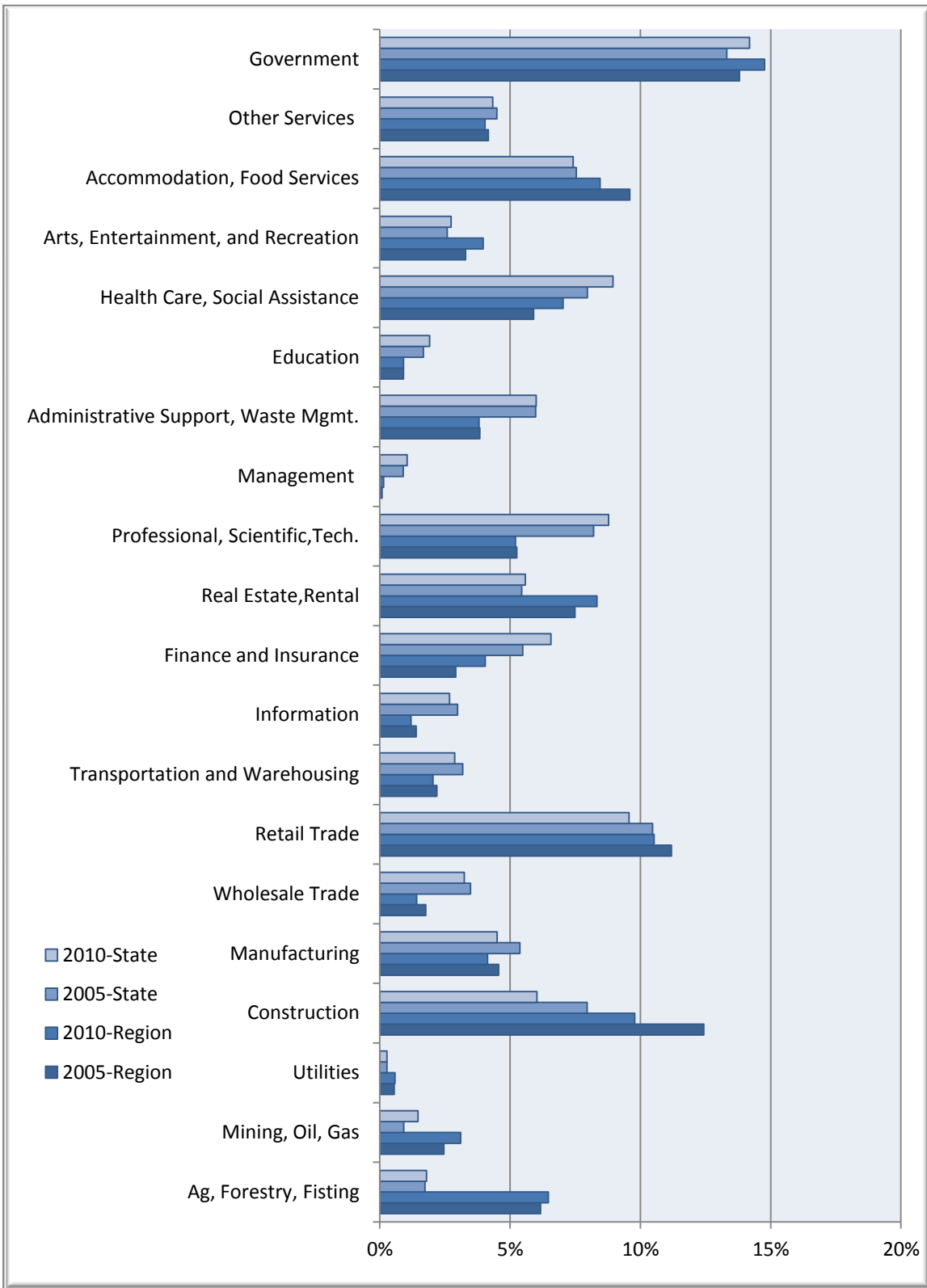


# Businesses & Industries



## Region 10 Data

Description	2005 Jobs	2010 Jobs	Change	% Change	2011 Wages, Salaries, & Proprietor Earnings	2011 Establishments
<b>Agriculture, Forestry, Fishing and Hunting</b>	3,688	3,934	246	7%	\$21,231	115
<b>Mining, Quarrying, and Oil and Gas Extraction</b>	1,470	1,888	418	28%	\$57,814	37
<b>Utilities</b>	332	358	26	8%	\$65,717	29
<b>Construction</b>	7,429	5,947	(1,482)	(20%)	\$34,788	788
<b>Manufacturing</b>	2,728	2,513	(215)	(8%)	\$31,525	175
<b>Wholesale Trade</b>	1,056	865	(191)	(18%)	\$43,088	156
<b>Retail Trade</b>	6,685	6,400	(285)	(4%)	\$23,513	533
<b>Transportation and Warehousing</b>	1,308	1,239	(69)	(5%)	\$32,357	143
<b>Information</b>	838	731	(107)	(13%)	\$29,266	77
<b>Finance and Insurance</b>	1,741	2,458	717	41%	\$42,439	164
<b>Real Estate and Rental and Leasing</b>	4,474	5,064	590	13%	\$17,206	265
<b>Professional, Scientific, and Technical Services</b>	3,140	3,165	25	1%	\$31,682	462
<b>Management of Companies and Enterprises</b>	52	90	38	73%	\$116,282	25
<b>Administrative and Support and Waste Management and Remediation Services</b>	2,294	2,315	21	1%	\$18,220	189
<b>Educational Services</b>	543	555	12	2%	\$13,029	32
<b>Health Care and Social Assistance</b>	3,524	4,275	751	21%	\$28,893	308
<b>Arts, Entertainment, and Recreation</b>	1,970	2,410	440	22%	\$16,915	111
<b>Accommodation and Food Services</b>	5,730	5,135	(595)	(10%)	\$17,958	400
<b>Other Services (except Public Administration)</b>	2,488	2,451	(37)	(1%)	\$25,257	258
<b>Government</b>	8,247	8,972	725	9%	\$39,340	198
<b>Total</b>	<b>59,735</b>	<b>60,765</b>	<b>1,030</b>	<b>0.02</b>	<b>29,210</b>	<b>4,464</b>

Source: EMSI Complete Employment - 4th Quarter 2010

## Colorado State Data

Description	2005 Jobs	2010 Jobs	Change	% Change	2011 Wages, Salaries, & Proprietor Earnings	2011 Establishments
<b>Agriculture, Forestry, Fishing and Hunting</b>	52,017	56,209	4,192	8%	\$24,366	1,402
<b>Mining, Quarrying, and Oil and Gas Extraction</b>	27,651	45,951	18,300	66%	\$77,561	1,556
<b>Utilities</b>	8,368	8,802	434	5%	\$84,064	412
<b>Construction</b>	238,666	188,514	(50,152)	(21%)	\$46,281	18,577
<b>Manufacturing</b>	161,224	140,749	(20,475)	(13%)	\$58,163	5,397
<b>Wholesale Trade</b>	104,379	101,441	(2,938)	(3%)	\$70,128	12,671
<b>Retail Trade</b>	313,734	298,804	(14,930)	(5%)	\$26,169	17,322
<b>Transportation and Warehousing</b>	95,386	89,737	(5,649)	(6%)	\$44,896	3,963
<b>Information</b>	89,571	83,503	(6,068)	(7%)	\$77,036	3,201
<b>Finance and Insurance</b>	164,543	205,108	40,565	25%	\$56,710	10,292
<b>Real Estate and Rental and Leasing</b>	163,212	174,419	11,207	7%	\$25,334	9,206
<b>Professional, Scientific, and Technical Services</b>	246,024	274,104	28,080	11%	\$63,287	29,394
<b>Management of Companies and Enterprises</b>	27,120	32,838	5,718	21%	\$117,969	1,653
<b>Administrative and Support and Waste Management and Remediation Services</b>	179,262	187,432	8,170	5%	\$29,089	9,968
<b>Educational Services</b>	50,374	59,777	9,403	19%	\$28,596	2,277
<b>Health Care and Social Assistance</b>	238,799	279,392	40,593	17%	\$42,510	13,756
<b>Arts, Entertainment, and Recreation</b>	77,561	85,629	8,068	10%	\$20,906	2,509
<b>Accommodation and Food Services</b>	226,213	231,677	5,464	2%	\$18,861	11,901
<b>Other Services (except Public Administration)</b>	134,800	135,366	566	0%	\$30,932	12,522
<b>Government</b>	399,158	443,146	43,988	11%	\$47,009	3,032
<b>Total</b>	2,998,064	3,122,598	124,534	0.04	43,391	171,011

Source: EMSI Complete Employment - 4th Quarter 2010