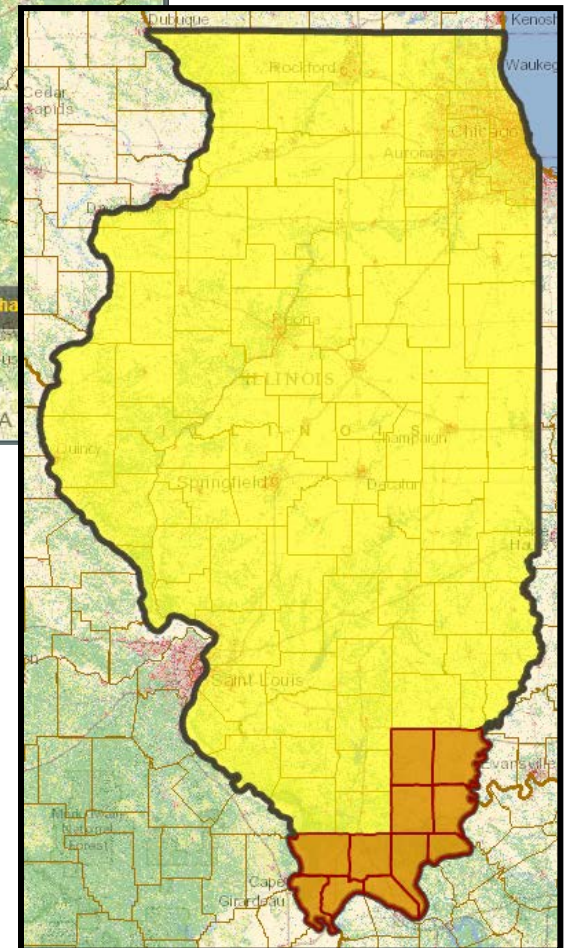
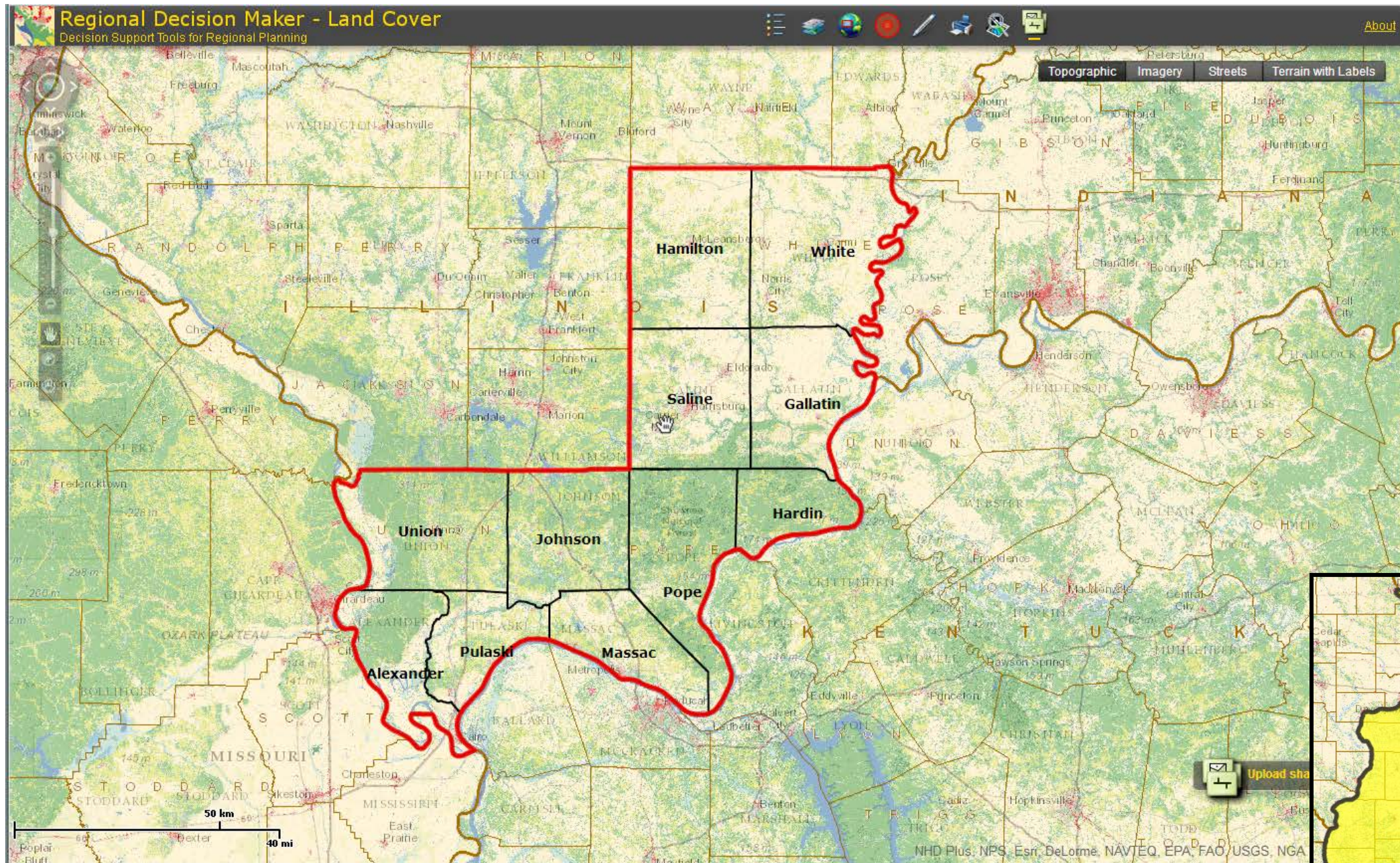


Southern Illinois Communities Region



Region includes the following counties:

- Alexander
- Gallatin
- Hamilton
- Hardin
- Johnson
- Massac
- Pope
- Pulaski
- Saline
- Union
- White

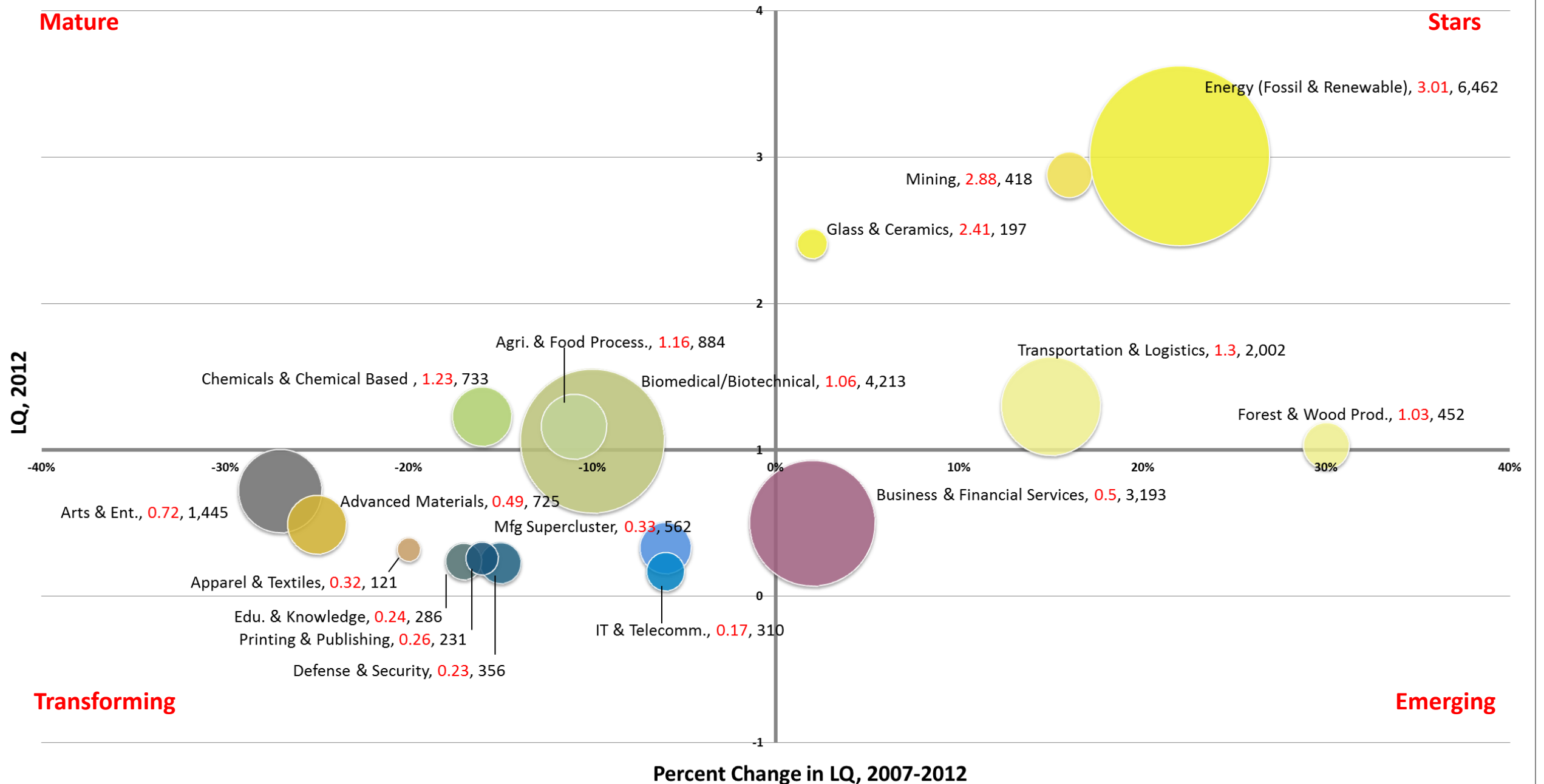
Source: RDM, PCRD & ESRI

Southern Illinois Communities Region: Economic Attributes

Economic & Demographic Attributes	Value	Remarks	Source
Population (2012)	121,231	People living in the region	Census
Jobs (2012)	51,614	Full and part-time jobs	EMSI (QCEW, BLS; BEA)
Average Earnings (2012)	\$37,253	Include wages, salaries, supplements and proprietor income	EMSI (BLS; BEA)
Completions (2010)	1,169	Students completing a specific course of study	EMSI (NCES; IPEDS)
GRP, Gross Regional Product (2011)	\$3,429,365,935	Final market value of all goods and services produced in the region	EMSI (BEA; QCEW, BLS)
Exports (2011)	\$5,487,309,701	\$ earned from selling goods and services to foreign and external domestic regions	EMSI model (BEA)
Imports (2011)	\$6,206,862,353	\$ spent on procuring goods and services from foreign and external domestic region	EMSI model (BEA)

Southern Illinois Communities Region

Industry Cluster Analysis, 2007-2012

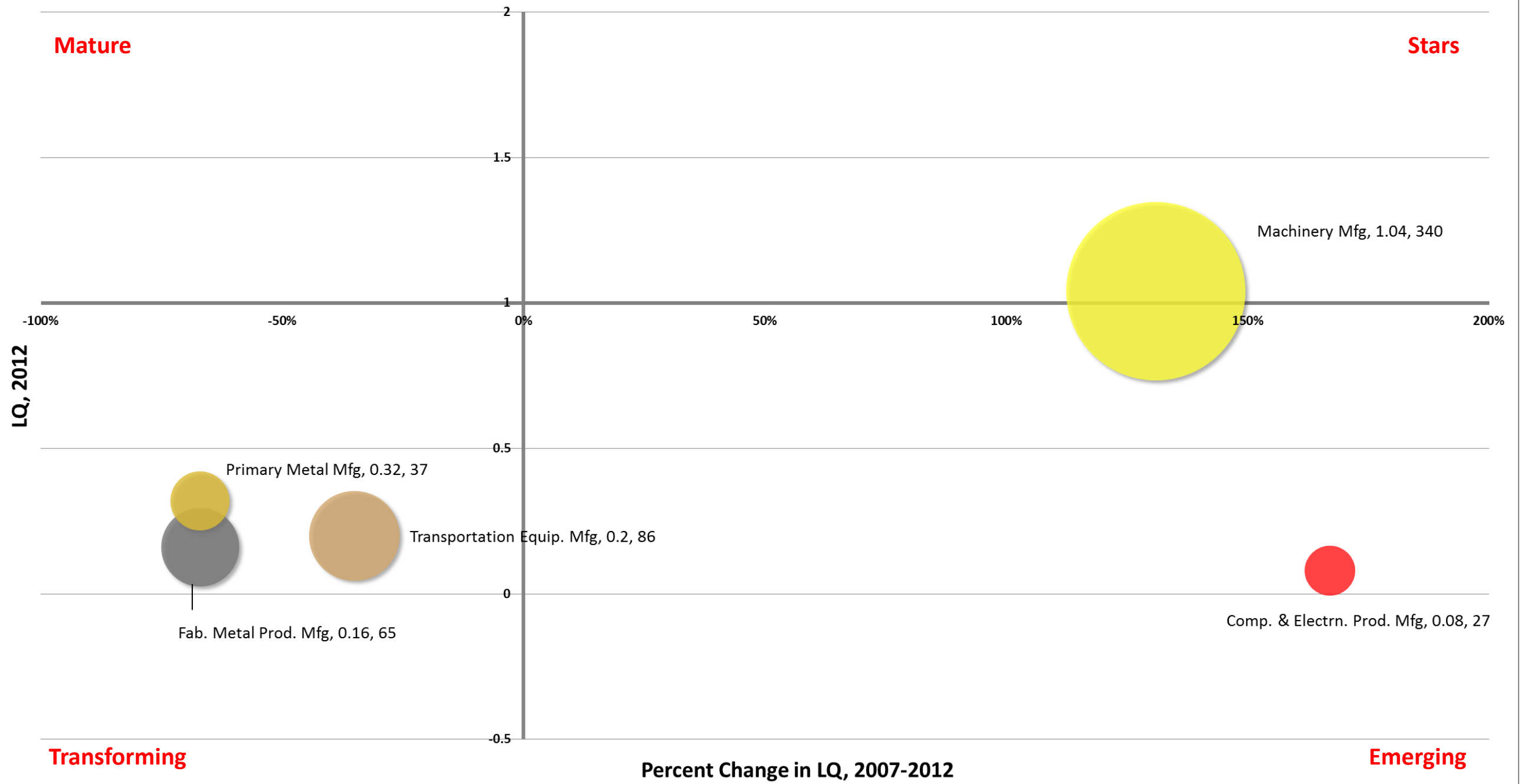


Note: Label includes cluster name, LQ 2007, and Employment 2007

Data Source: EMSI 2012.4, industry cluster definitions by PCRD

Southern Illinois Communities Region

Manufacturing Sub Cluster Analysis, 2007-2012



Note: Label includes cluster name, LQ 2007, and Employment 2007

Data Source: EMSI 2012.4, industry cluster definitions by PCRD

Industry Cluster Analysis, 2007-2012

Mature

- Biomedical/Biotechnical (Life Sciences)
- Agribusiness, Food Processing & Technology
- Chemicals & Chemical Based Products

Stars

- Energy (Fossil & Renewable)
- Transportation & Logistics
- Forest & Wood Products
- Mining
- Glass & Ceramics
- Machinery Manufacturing

Level of Specialization

Percent Growth in Specialization

TRANSFORMING

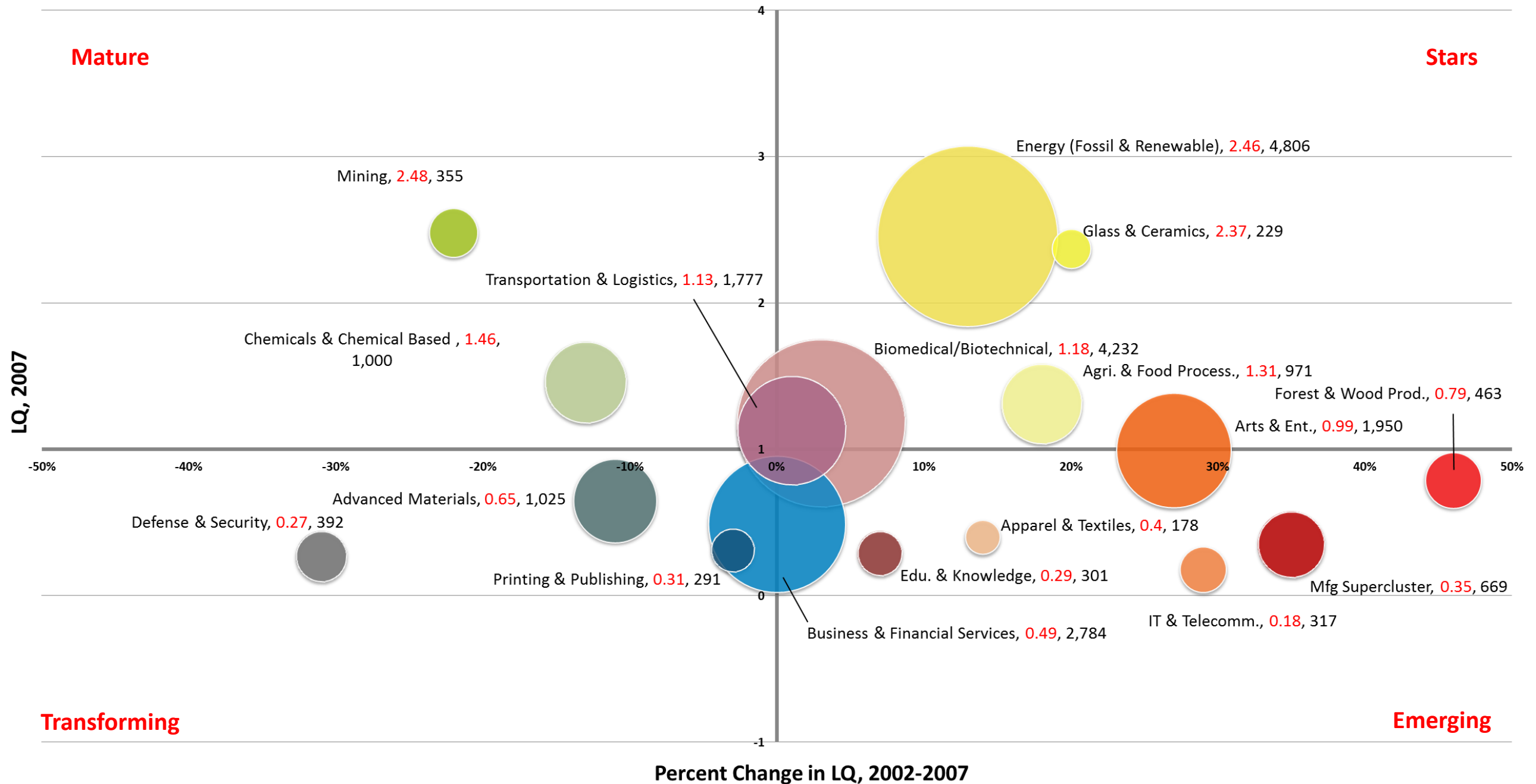
- Arts, Entertainment, Recreation & Visitor Industries
- Advanced Materials
- Defense & Security
- Information Technology & Telecommunications
- Education & Knowledge Creation
- Printing & Publishing
- Apparel & Textiles
- Transportation Equipment Manufacturing
- Fabricated Metal Product Manufacturing
- Primary Metal Manufacturing
- Manufacturing Supercluster

Emerging

- Business & Financial Services
- Computer & Electronic Product Manufacturing

Southern Illinois Communities Region

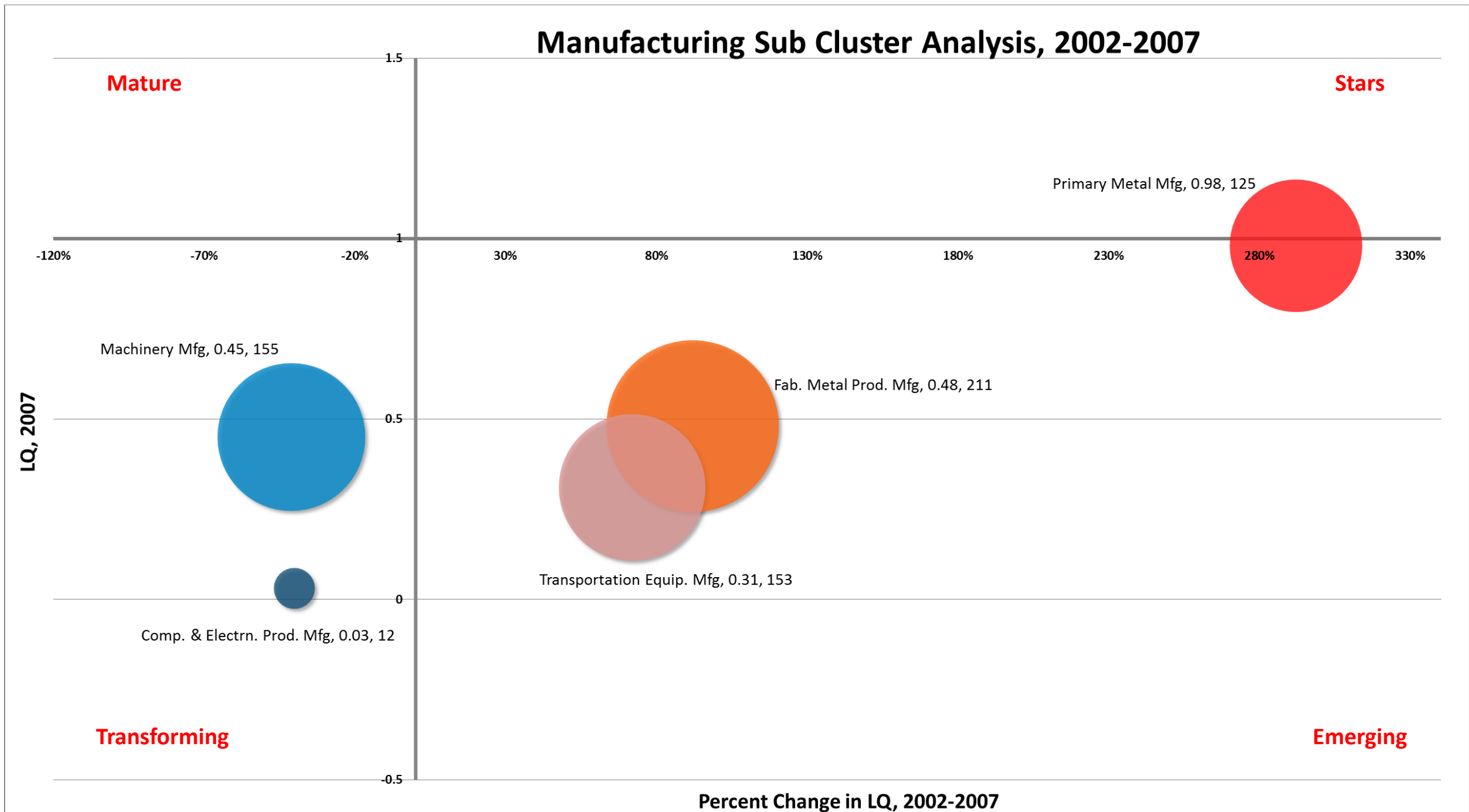
Industry Cluster Analysis, 2002-2007



Note: Label includes cluster name, LQ 2012, and Employment 2012

Data Source: EMSI 2012.4, industry cluster definitions by PCRD

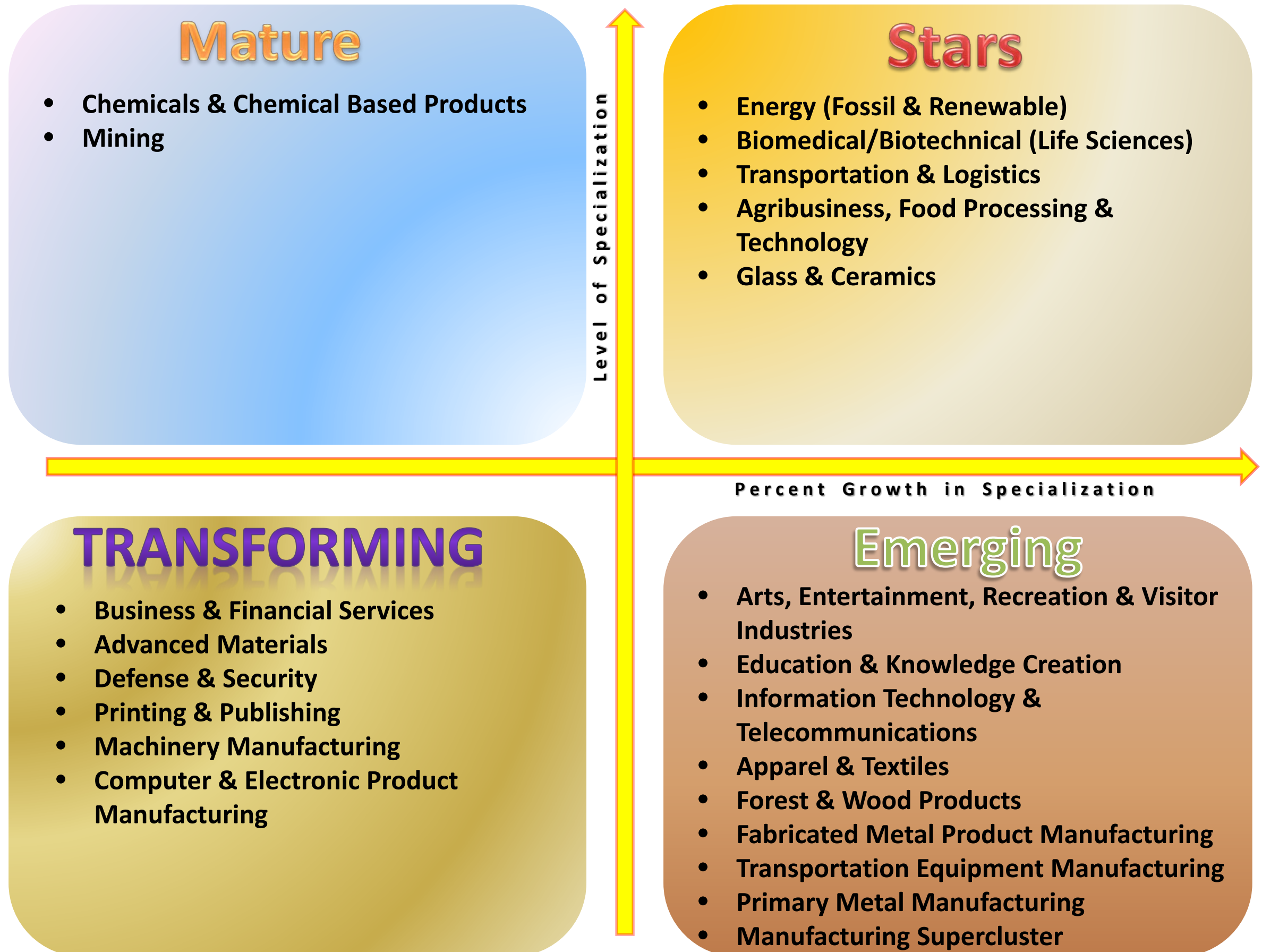
Southern Illinois Communities Region



Note: Label includes cluster name, LQ 2012, and Employment 2012

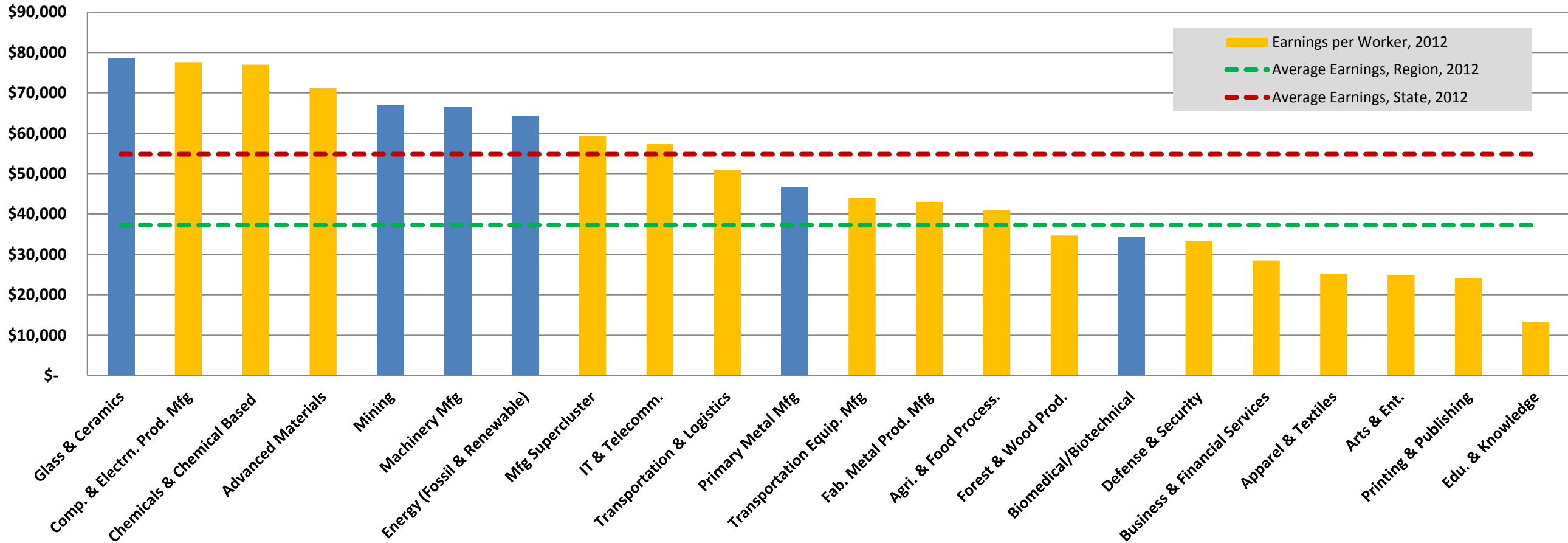
Data Source: EMSI 2012.4, industry cluster definitions by PCRD

Industry Cluster Analysis, 2002-2007



Average Earnings of Industry Clusters, 2012

Southern Illinois Communities Region, Earnings per Worker, 2012



Note: Electrical equipment manufacturing did not exist in 2007-2012

Data Source: EMSI 2012.4, industry cluster definitions by PCRD

 Star clusters

Southern Illinois Communities Region Industry Clusters, 2012

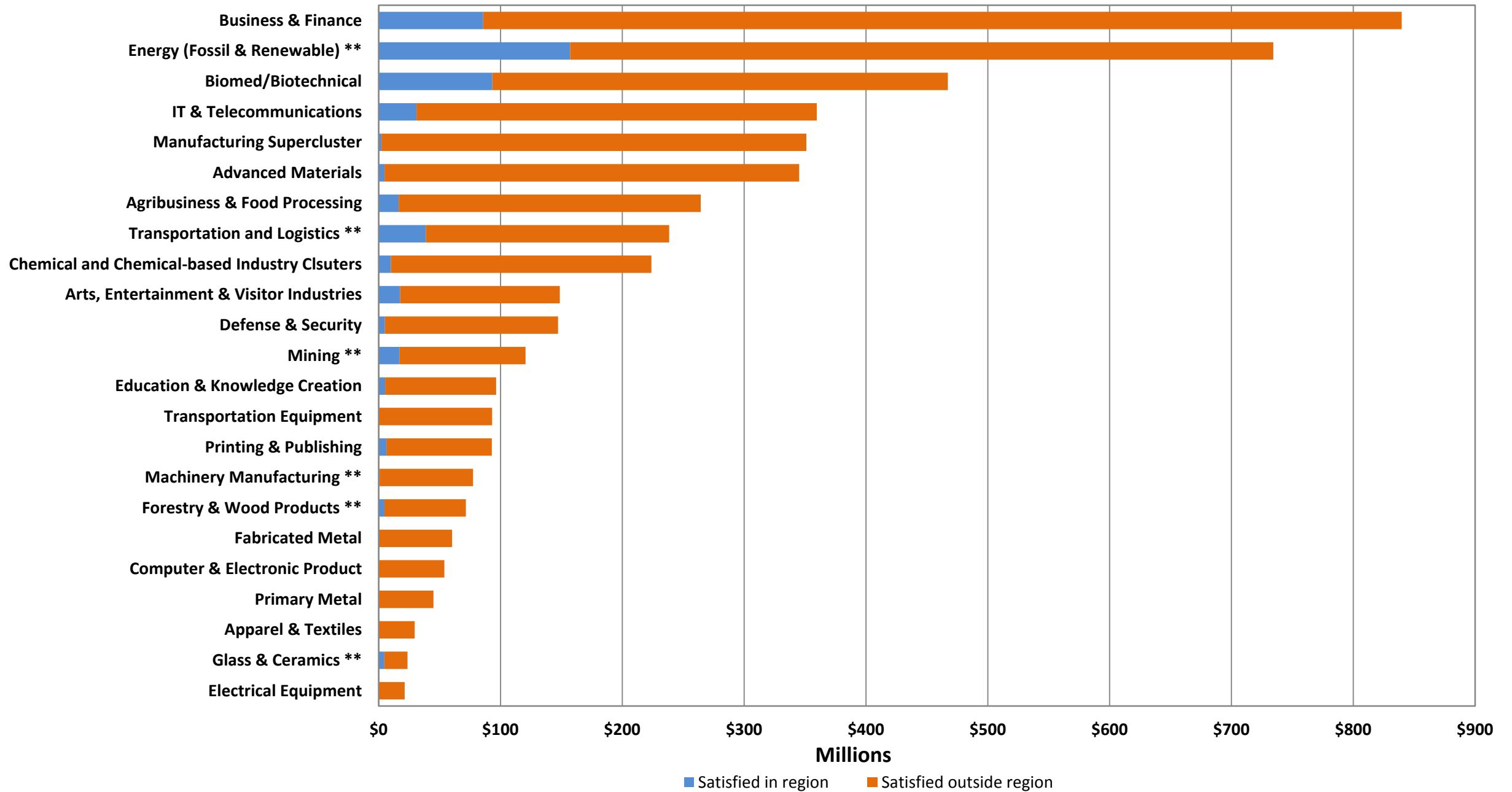
Cluster Name	2012 Jobs	2012 LQ	Percent Change LQ, 2007-2012	2012 EPW	Competitive Effect (shift-share)
Energy (Fossil & Renewable)	6,462	3.01	22%	\$64,441	1,261
Biomedical/Biotechnical (Life Sciences)	4,213	1.06	-10%	\$34,383	-395
Business & Financial Services	3,193	0.50	2%	\$28,470	137
Transportation & Logistics	2,002	1.30	15%	\$50,930	284
Arts, Entertainment, Recreation & Visitor Industries	1,445	0.72	-27%	\$24,923	-512
Agribusiness, Food Processing & Technology	884	1.16	-11%	\$40,968	-101
Chemicals & Chemical Based Products	733	1.23	-16%	\$76,964	-125
Advanced Materials	725	0.49	-25%	\$71,198	-222
Manufacturing Supercluster	562	0.33	-6%	\$59,365	-32
Forest & Wood Products	452	1.03	30%	\$34,687	110
Mining	418	2.88	16%	\$66,872	63
Defense & Security	356	0.23	-15%	\$33,258	-54
Machinery Manufacturing	340	1.04	131%	\$66,436	196
Information Technology & Telecommunications	310	0.17	-6%	\$57,440	-6
Education & Knowledge Creation	286	0.24	-17%	\$13,250	-49
Printing & Publishing	231	0.26	-16%	\$24,153	-37
Glass & Ceramics	197	2.41	2%	\$78,677	6
Apparel & Textiles	121	0.32	-20%	\$25,248	-30
Transportation Equipment Manufacturing	86	0.20	-35%	\$43,974	-47
Fabricated Metal Product Manufacturing	65	0.16	-67%	\$43,019	-125
Primary Metal Manufacturing	37	0.32	-67%	\$46,742	-75
Computer & Electronic Product Manufacturing	27	0.08	167%	\$77,590	16

Note: Electrical equipment manufacturing did not exist in 2007-2012

Data Source: EMSI 2012.4, industry cluster definitions by PCRD

Southern Illinois Communities Region Industry Clusters

Regional Requirements , Expenditures & Leakages, 2011



Data Source: EMSI 2012.4, industry cluster definitions by PCRD

PURDUE

CENTER FOR
REGIONAL DEVELOPMENT

Purdue Center for Regional Development
Purdue University
Gerald D. and Edna E. Mann Hall, Suite 266
203 Martin Jischke Drive
West Lafayette, IN 47907-2057