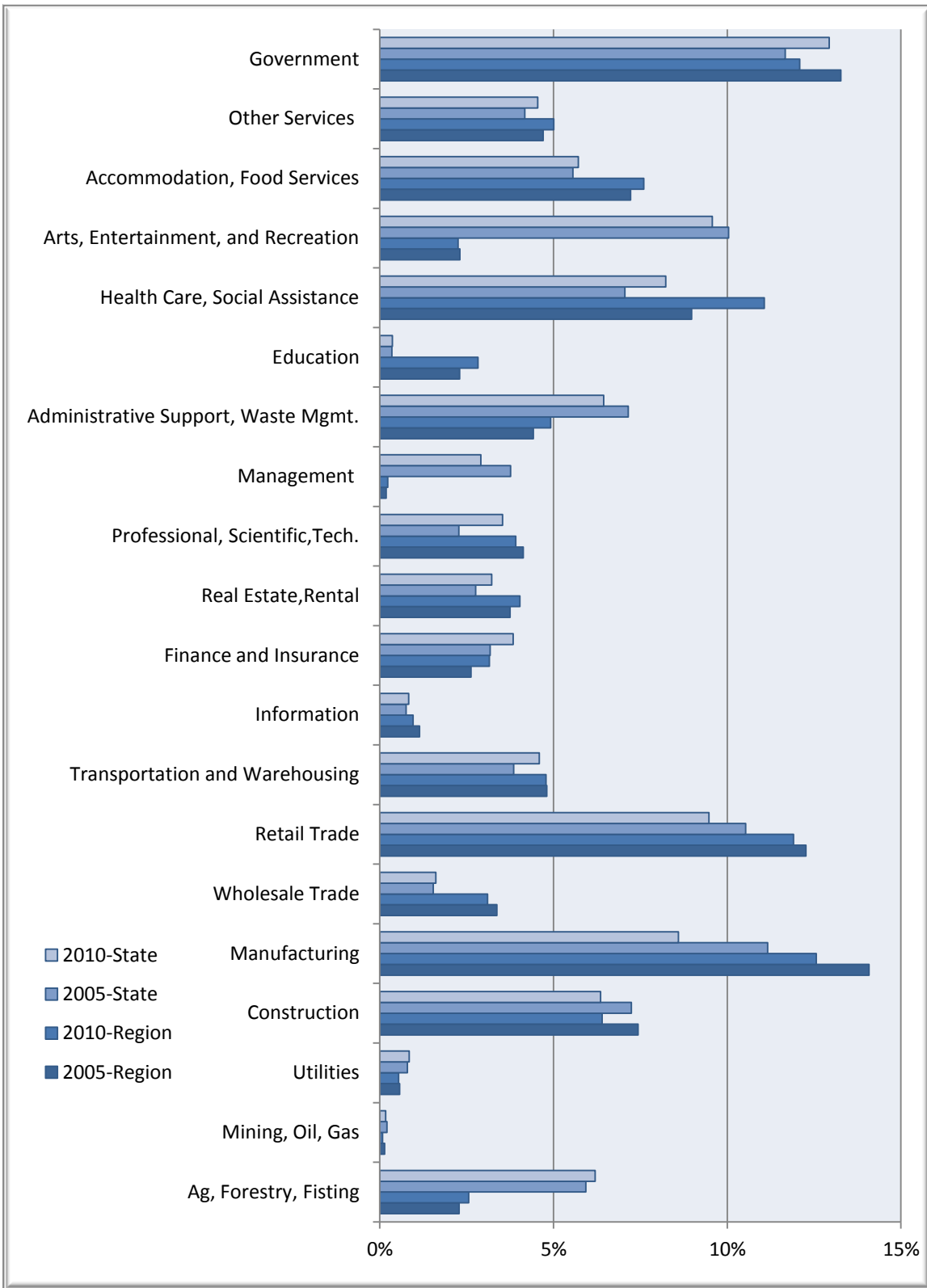


Businesses & Industries



Southeast In Growth Alliance Regional Data

Description	2005 Jobs	2010 Jobs	Change	% Change	2011 Wages, Salaries, & Proprietor Earnings	2011 Establishments
Agriculture, Forestry, Fishing and Hunting	3,026	3,065	39	1%	\$20,323	31
Mining, Quarrying, and Oil and Gas Extraction	105	84	(21)	(20%)	\$35,532	7
Utilities	405	420	15	4%	\$74,465	29
Construction	3,697	3,142	(555)	(15%)	\$36,762	337
Manufacturing	5,698	4,252	(1,446)	(25%)	\$47,152	123
Wholesale Trade	785	797	12	2%	\$46,582	120
Retail Trade	5,376	4,686	(690)	(13%)	\$20,830	320
Transportation and Warehousing	1,966	2,270	304	15%	\$36,777	145
Information	386	413	27	7%	\$28,653	23
Finance and Insurance	1,620	1,900	280	17%	\$106,697	125
Real Estate and Rental and Leasing	1,408	1,595	187	13%	\$11,916	72
Professional, Scientific, and Technical Services	1,163	1,750	587	50%	\$36,636	171
Management of Companies and Enterprises	1,921	1,439	(482)	(25%)	\$82,505	25
Administrative and Support and Waste Management and Remediation Services	3,649	3,187	(462)	(13%)	\$19,477	109
Educational Services	178	179	1	1%	\$13,216	8
Health Care and Social Assistance	3,599	4,071	472	13%	\$28,067	206
Arts, Entertainment, and Recreation	5,125	4,733	(392)	(8%)	\$29,916	49
Accommodation and Food Services	2,839	2,828	(11)	0%	\$13,112	184
Other Services (except Public Administration)	2,131	2,248	117	5%	\$19,609	213
Government	5,956	6,396	440	7%	\$34,660	176
Total	51,034	49,455	-1,579	-0.03	33,824	2,474

Source: EMSI Complete Employment - 4th Quarter 2010

Indiana State Data

Description	2005 Jobs	2010 Jobs	Change	% Change	2011 Wages, Salaries, & Proprietor Earnings	2011 Establishments
Agriculture, Forestry, Fishing and Hunting	71,399	75,827	4,428	6%	\$29,209	1,454
Mining, Quarrying, and Oil and Gas Extraction	9,247	11,197	1,950	21%	\$47,657	335
Utilities	15,055	15,390	335	2%	\$77,408	444
Construction	220,769	182,948	(37,821)	(17%)	\$44,698	15,831
Manufacturing	581,053	461,758	(119,295)	(21%)	\$55,501	8,744
Wholesale Trade	130,546	122,465	(8,081)	(6%)	\$54,632	13,972
Retail Trade	405,047	368,677	(36,370)	(9%)	\$22,749	20,488
Transportation and Warehousing	156,623	151,709	(4,914)	(3%)	\$40,758	6,129
Information	47,262	43,466	(3,796)	(8%)	\$43,448	2,239
Finance and Insurance	133,224	149,138	15,914	12%	\$48,465	9,937
Real Estate and Rental and Leasing	120,607	122,700	2,093	2%	\$21,074	5,791
Professional, Scientific, and Technical Services	147,658	157,081	9,423	6%	\$48,861	16,302
Management of Companies and Enterprises	27,447	29,494	2,047	7%	\$75,343	976
Administrative and Support and Waste Management and Remediation Services	197,757	202,037	4,280	2%	\$23,577	8,699
Educational Services	65,343	79,025	13,682	21%	\$29,721	1,625
Health Care and Social Assistance	347,513	392,831	45,318	13%	\$40,816	12,851
Arts, Entertainment, and Recreation	66,752	68,983	2,231	3%	\$21,103	2,041
Accommodation and Food Services	242,864	242,562	(302)	0%	\$14,113	12,261
Other Services (except Public Administration)	178,920	179,171	251	0%	\$23,513	13,297
Government	425,505	444,724	19,219	5%	\$37,369	5,179
Total	3,590,593	3,501,183	-89,410	-0.02	36,988	158,594

Source: EMSI Complete Employment - 4th Quarter 2010