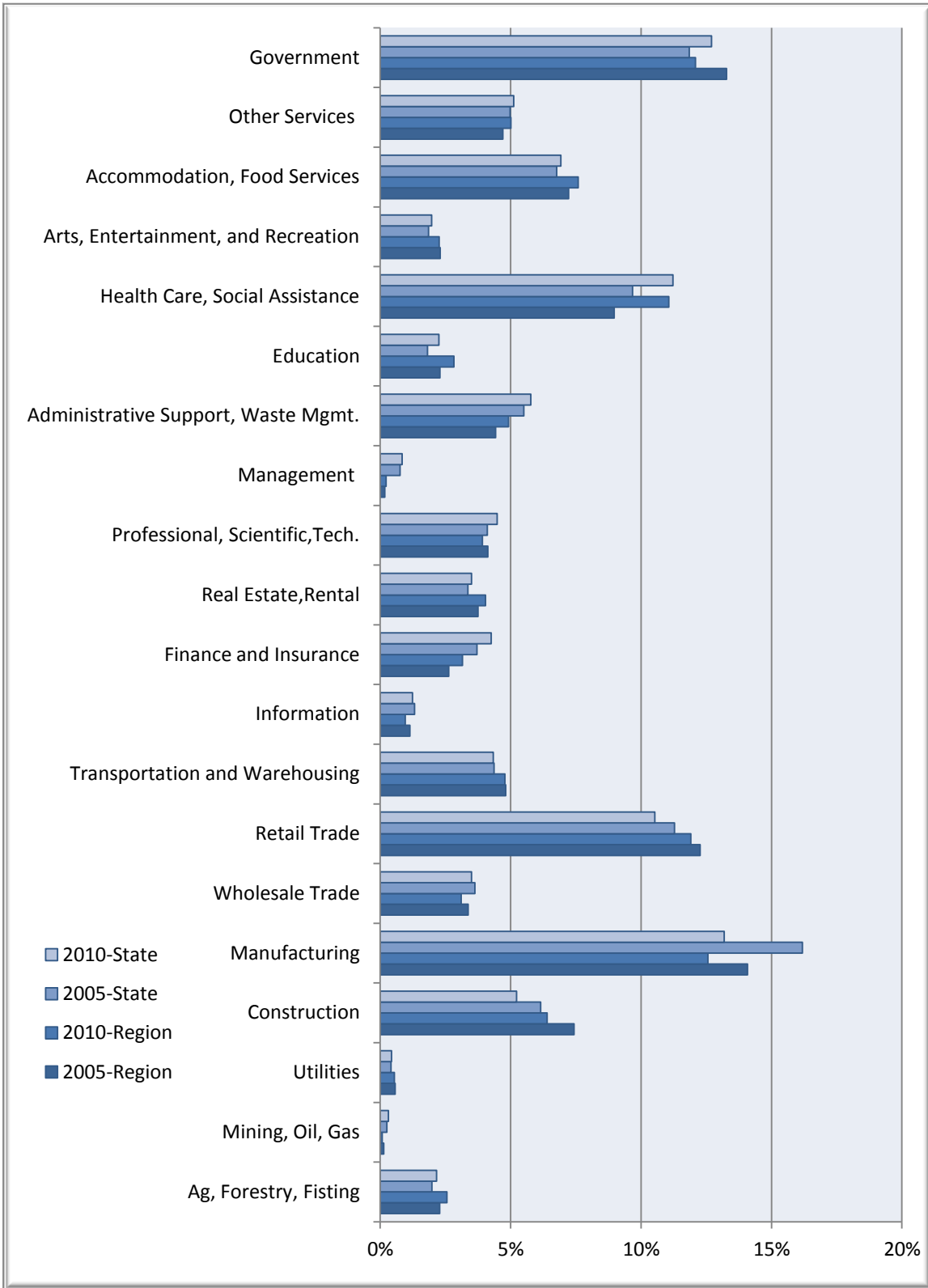


Businesses & Industries



## Rural Communities Regional Data

Description	2005 Jobs	2010 Jobs	Change	% Change	2011 Wages, Salaries, & Proprietor Earnings	2011 Establishments
<b>Agriculture, Forestry, Fishing and Hunting</b>	3,437	3,801	364	11%	\$31,315	105
<b>Mining, Quarrying, and Oil and Gas Extraction</b>	208	121	(87)	(42%)	\$40,327	9
<b>Utilities</b>	866	806	(60)	(7%)	\$74,907	12
<b>Construction</b>	11,188	9,510	(1,678)	(15%)	\$49,673	936
<b>Manufacturing</b>	21,183	18,653	(2,530)	(12%)	\$52,812	384
<b>Wholesale Trade</b>	5,076	4,605	(471)	(9%)	\$50,042	588
<b>Retail Trade</b>	18,454	17,683	(771)	(4%)	\$21,040	1,001
<b>Transportation and Warehousing</b>	7,238	7,105	(133)	(2%)	\$44,161	353
<b>Information</b>	1,720	1,423	(297)	(17%)	\$32,843	95
<b>Finance and Insurance</b>	3,953	4,689	736	19%	\$36,186	382
<b>Real Estate and Rental and Leasing</b>	5,649	5,992	343	6%	\$15,899	280
<b>Professional, Scientific, and Technical Services</b>	6,217	5,814	(403)	(6%)	\$37,210	663
<b>Management of Companies and Enterprises</b>	275	345	70	25%	\$59,078	26
<b>Administrative and Support and Waste Management and Remediation Services</b>	6,655	7,311	656	10%	\$22,346	407
<b>Educational Services</b>	3,455	4,195	740	21%	\$23,558	70
<b>Health Care and Social Assistance</b>	13,503	16,437	2,934	22%	\$38,569	606
<b>Arts, Entertainment, and Recreation</b>	3,470	3,354	(116)	(3%)	\$17,430	85
<b>Accommodation and Food Services</b>	10,867	11,281	414	4%	\$12,534	617
<b>Other Services (except Public Administration)</b>	7,082	7,437	355	5%	\$20,665	662
<b>Government</b>	19,972	17,954	(2,018)	(10%)	\$34,076	266
<b>Total</b>	150,470	148,516	-1,954	-0.01	33,521	7,547

Source: EMSI Complete Employment - 4th Quarter 2010

## Indiana State Data

Description	2005 Jobs	2010 Jobs	Change	% Change	2011 Wages, Salaries, & Proprietor Earnings	2011 Establishments
<b>Agriculture, Forestry, Fishing and Hunting</b>	71,399	75,827	4,428	6%	\$29,209	1,454
<b>Mining, Quarrying, and Oil and Gas Extraction</b>	9,247	11,197	1,950	21%	\$47,657	335
<b>Utilities</b>	15,055	15,390	335	2%	\$77,408	444
<b>Construction</b>	220,769	182,948	(37,821)	(17%)	\$44,698	15,831
<b>Manufacturing</b>	581,053	461,758	(119,295)	(21%)	\$55,501	8,744
<b>Wholesale Trade</b>	130,546	122,465	(8,081)	(6%)	\$54,632	13,972
<b>Retail Trade</b>	405,047	368,677	(36,370)	(9%)	\$22,749	20,488
<b>Transportation and Warehousing</b>	156,623	151,709	(4,914)	(3%)	\$40,758	6,129
<b>Information</b>	47,262	43,466	(3,796)	(8%)	\$43,448	2,239
<b>Finance and Insurance</b>	133,224	149,138	15,914	12%	\$48,465	9,937
<b>Real Estate and Rental and Leasing</b>	120,607	122,700	2,093	2%	\$21,074	5,791
<b>Professional, Scientific, and Technical Services</b>	147,658	157,081	9,423	6%	\$48,861	16,302
<b>Management of Companies and Enterprises</b>	27,447	29,494	2,047	7%	\$75,343	976
<b>Administrative and Support and Waste Management and Remediation Services</b>	197,757	202,037	4,280	2%	\$23,577	8,699
<b>Educational Services</b>	65,343	79,025	13,682	21%	\$29,721	1,625
<b>Health Care and Social Assistance</b>	347,513	392,831	45,318	13%	\$40,816	12,851
<b>Arts, Entertainment, and Recreation</b>	66,752	68,983	2,231	3%	\$21,103	2,041
<b>Accommodation and Food Services</b>	242,864	242,562	(302)	0%	\$14,113	12,261
<b>Other Services (except Public Administration)</b>	178,920	179,171	251	0%	\$23,513	13,297
<b>Government</b>	425,505	444,724	19,219	5%	\$37,369	5,179
<b>Total</b>	<b>3,590,593</b>	<b>3,501,183</b>	<b>-89,410</b>	<b>-0.02</b>	<b>36,988</b>	<b>158,594</b>

Source: EMSI Complete Employment - 4th Quarter 2010