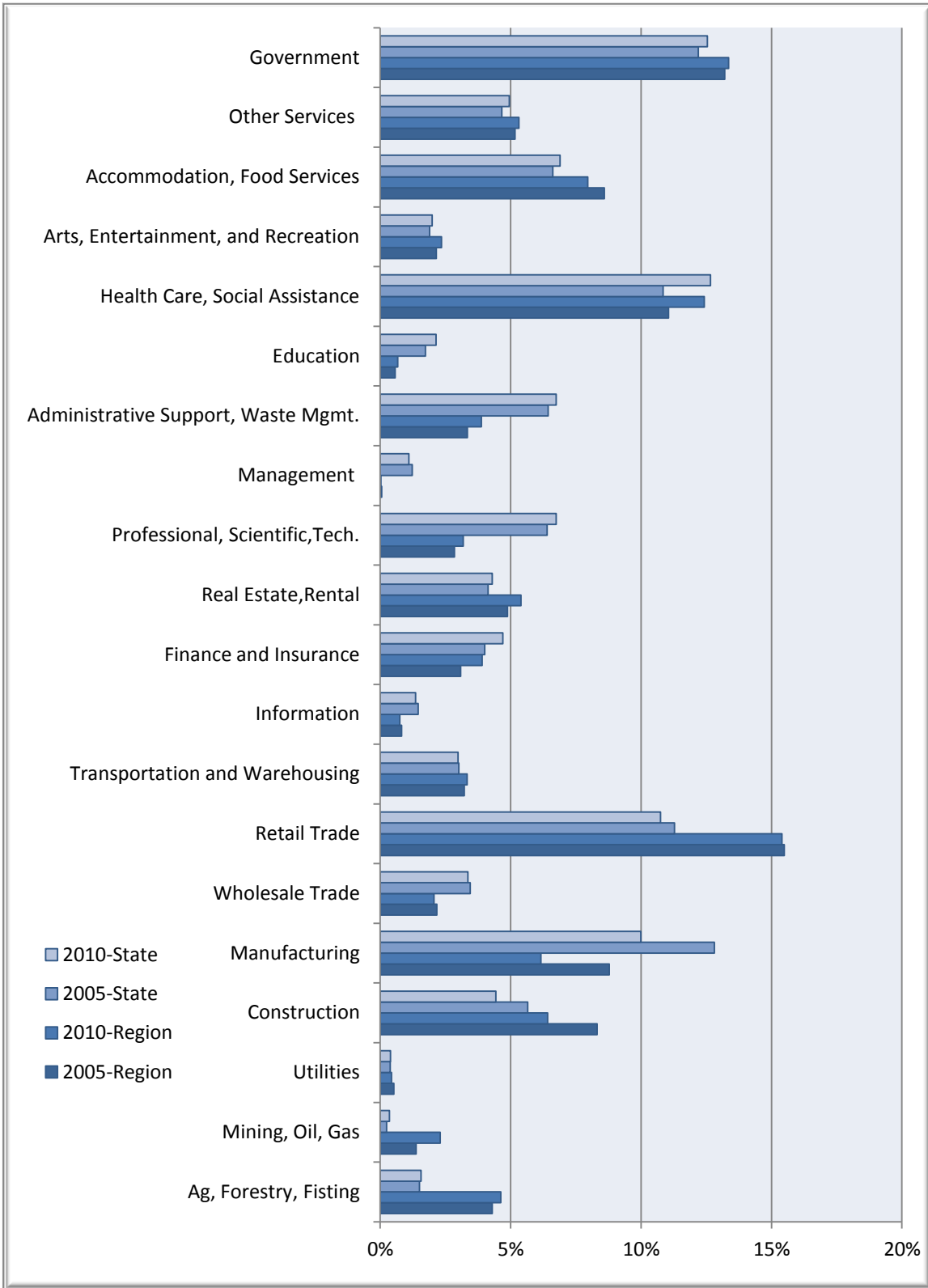


Percent of Jobs by Industry

Northern Transformation Region
Michigan

Businesses & Industries



Northern Transformation Regional Data

Description	2005 Jobs	2010 Jobs	Change	% Change	2011 Wages, Salaries, & Proprietor Earnings	2011 Establishments
Agriculture, Forestry, Fishing and Hunting	5,380	5,256	(124)	(2%)	\$21,312	125
Mining, Quarrying, and Oil and Gas Extraction	1,732	2,619	887	51%	\$32,576	68
Utilities	655	500	(155)	(24%)	\$75,149	32
Construction	10,421	7,300	(3,121)	(30%)	\$26,961	987
Manufacturing	11,000	7,008	(3,992)	(36%)	\$45,957	386
Wholesale Trade	2,727	2,345	(382)	(14%)	\$41,093	285
Retail Trade	19,407	17,513	(1,894)	(10%)	\$21,663	1,219
Transportation and Warehousing	4,039	3,794	(245)	(6%)	\$32,175	270
Information	1,030	859	(171)	(17%)	\$30,897	96
Finance and Insurance	3,861	4,446	585	15%	\$27,511	313
Real Estate and Rental and Leasing	6,119	6,132	13	0%	\$10,355	203
Professional, Scientific, and Technical Services	3,566	3,624	58	2%	\$29,581	384
Management of Companies and Enterprises	80	30	(50)	(63%)	\$57,407	5
Administrative and Support and Waste Management and Remediation Services	4,190	4,409	219	5%	\$16,986	288
Educational Services	721	772	51	7%	\$11,320	25
Health Care and Social Assistance	13,845	14,129	284	2%	\$30,259	565
Arts, Entertainment, and Recreation	2,696	2,672	(24)	(1%)	\$12,685	192
Accommodation and Food Services	10,761	9,047	(1,714)	(16%)	\$14,220	775
Other Services (except Public Administration)	6,480	6,043	(437)	(7%)	\$18,872	694
Government	16,541	15,186	(1,355)	(8%)	\$39,127	538
Total	125,252	113,684	-11,568	-0.09	26,954	7,450

Source: EMSI Complete Employment - 4th Quarter 2010

Michigan State Data

Description	2005 Jobs	2010 Jobs	Change	% Change	2011 Wages, Salaries, & Proprietor Earnings	2011 Establishments
Agriculture, Forestry, Fishing and Hunting	81,710	78,030	(3,680)	(5%)	\$25,359	2,362
Mining, Quarrying, and Oil and Gas Extraction	13,282	17,687	4,405	33%	\$40,693	435
Utilities	21,204	19,993	(1,211)	(6%)	\$96,086	382
Construction	306,748	221,639	(85,109)	(28%)	\$41,507	22,602
Manufacturing	694,961	498,913	(196,048)	(28%)	\$61,089	14,554
Wholesale Trade	187,551	167,838	(19,713)	(11%)	\$65,658	20,092
Retail Trade	612,387	536,771	(75,616)	(12%)	\$24,443	32,697
Transportation and Warehousing	163,808	149,235	(14,573)	(9%)	\$45,417	6,679
Information	79,385	67,860	(11,525)	(15%)	\$50,130	3,948
Finance and Insurance	217,393	235,066	17,673	8%	\$50,299	13,294
Real Estate and Rental and Leasing	224,262	214,687	(9,575)	(4%)	\$18,763	7,171
Professional, Scientific, and Technical Services	347,066	336,982	(10,084)	(3%)	\$60,665	26,969
Management of Companies and Enterprises	66,728	54,988	(11,740)	(18%)	\$104,039	902
Administrative and Support and Waste Management and Remediation Services	349,624	336,852	(12,772)	(4%)	\$27,373	16,819
Educational Services	94,102	107,102	13,000	14%	\$26,663	2,695
Health Care and Social Assistance	588,191	632,196	44,005	7%	\$40,910	22,752
Arts, Entertainment, and Recreation	102,991	99,459	(3,532)	(3%)	\$19,244	3,777
Accommodation and Food Services	359,155	344,280	(14,875)	(4%)	\$15,263	19,033
Other Services (except Public Administration)	253,152	247,005	(6,147)	(2%)	\$25,140	22,599
Government	661,744	626,323	(35,421)	(5%)	\$45,649	7,209
Total	5,425,444	4,992,906	-432,538	-0.08	40,318	246,971

Source: EMSI Complete Employment - 4th Quarter 2010