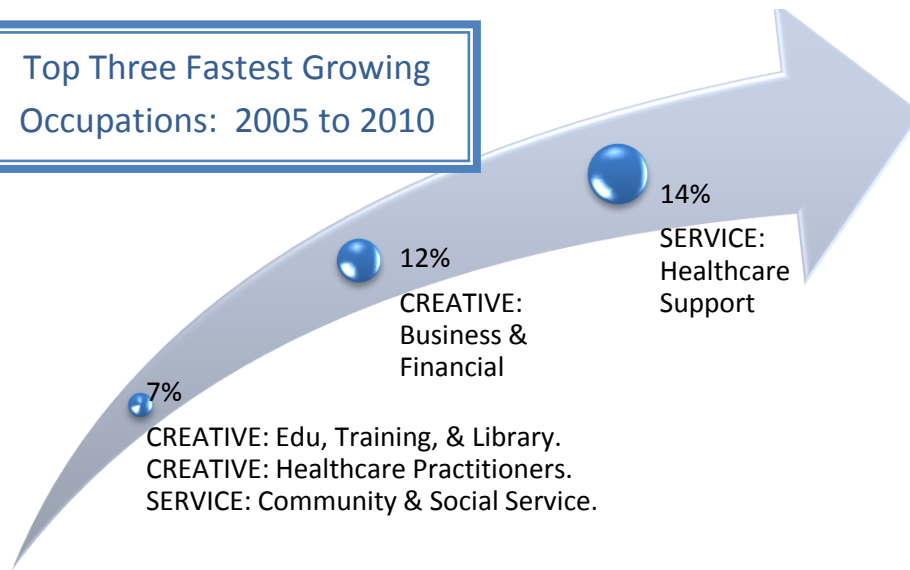
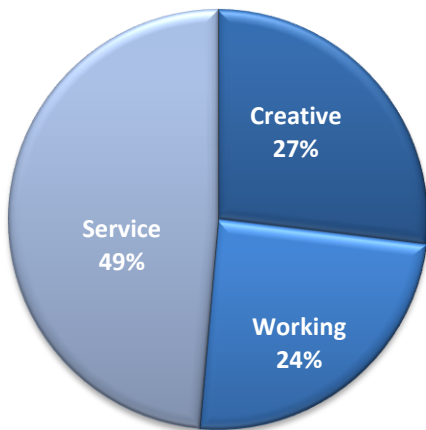


Mississippi Delta & Hwy 61 Region

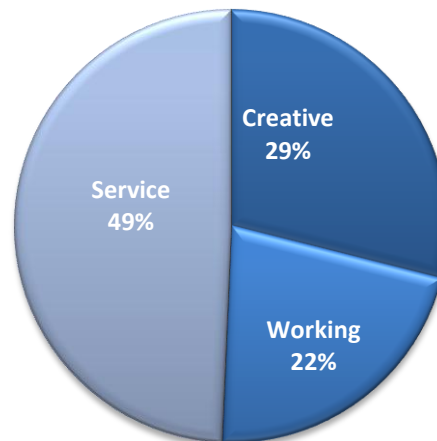
Top Three Fastest Growing Occupations: 2005 to 2010



Workers by Class: 2005



Workers by Class: 2010



Top Five Occupations in Number of Jobs

2005

2010

Rank	2005 Occupation	2010 Occupation
#1	SERVICE: Office & Admin. Support	SERVICE: Office & Admin. Support
#2	SERVICE: Sales & Related	SERVICE: Sales & Related
#3	CREATIVE: Management	CREATIVE: Management
#4	WORKING: Production	CREATIVE: Educ., Training, Library
#5	WORKING: Transportation	SERVICE: Food Preparation

Creative, Working & Service Classes

Mississippi Delta & Hwy 61 Region Data

CREATIVE CLASS: Occupations	2005 Jobs	2010 Jobs	Change	% Change	2011 Median Hourly Wage	2011 Avg Hourly Wage
Management occupations	14,849	15,041	192	1%	\$17.70	\$20.74
Business and financial operations occupations	3,440	3,868	428	12%	\$16.09	\$18.47
Computer and mathematical science occupations	900	878	(22)	(2%)	\$22.26	\$23.72
Architecture and engineering occupations	1,740	1,791	51	3%	\$31.48	\$32.54
Life, physical, and social science occupations	1,348	1,374	26	2%	\$24.02	\$26.26
Legal occupations	799	772	(27)	(3%)	\$19.31	\$25.50
Education, training, and library occupations	12,045	12,844	799	7%	\$18.55	\$19.24
Arts, design, entertainment, sports, and media occupations	2,138	2,159	21	1%	\$10.42	\$12.20
Healthcare practitioners and technical occupations	7,336	7,840	504	7%	\$25.31	\$27.85
Total	44,596	46,567	1,971	0.04	19.59	21.71
WORKING CLASS: Occupations	2005 Jobs	2010 Jobs	Change	% Change	2011 Median Hourly Wage	2011 Avg Hourly Wage
Construction and extraction occupations	6,448	6,053	(395)	(6%)	\$13.47	\$14.91
Installation, maintenance, and repair occupations	6,779	6,411	(368)	(5%)	\$15.19	\$16.13
Production occupations	14,625	11,282	(3,343)	(23%)	\$12.53	\$13.33
Transportation and material moving occupations	12,717	11,346	(1,371)	(11%)	\$12.12	\$13.06
Total	40,570	35,092	-5,478	-0.14	13.04	14.03
SERVICE CLASS: Occupations	2005 Jobs	2010 Jobs	Change	% Change	2011 Median Hourly Wage	2011 Avg Hourly Wage
Community and social services occupations	2,435	2,596	161	7%	\$12.96	\$13.59
Healthcare support occupations	3,632	4,139	507	14%	\$9.89	\$10.23
Protective service occupations	5,752	5,675	(77)	(1%)	\$12.14	\$12.86
Food preparation and serving related occupations	12,520	12,216	(304)	(2%)	\$9.94	\$10.52
Building and grounds cleaning and maintenance occupations	7,793	8,130	337	4%	\$8.51	\$8.79
Personal care and service occupations	9,565	9,727	162	2%	\$9.10	\$9.61
Sales and related occupations	18,286	17,599	(687)	(4%)	\$10.43	\$11.96
Office and administrative support occupations	20,468	19,357	(1,111)	(5%)	\$11.87	\$12.73
Total	80,451	79,439	-1,012	-0.01	10.51	11.33

Source: EMSI Complete Employment - 4th Quarter 2011

*Does not include military or agriculture related occupations.

Module 7 Occupations: Creative, Working & Service Classes

Slide 52

Mississippi State Data

CREATIVE CLASS: Occupations	2005 Jobs	2010 Jobs	Change	% Change	2011 Median Hourly Wage	2011 Avg Hourly Wage
Management occupations	118,623	123,924	5,301	4%	\$18.20	\$21.92
Business and financial operations occupations	39,109	45,917	6,808	17%	\$16.92	\$19.51
Computer and mathematical science occupations	11,414	12,132	718	6%	\$22.00	\$23.69
Architecture and engineering occupations	17,020	17,500	480	3%	\$25.98	\$27.77
Life, physical, and social science occupations	9,150	10,124	974	11%	\$21.60	\$23.94
Legal occupations	9,680	9,805	125	1%	\$23.49	\$28.15
Education, training, and library occupations	85,195	90,984	5,789	7%	\$20.69	\$21.65
Arts, design, entertainment, sports, and media occupations	24,392	26,004	1,612	7%	\$11.32	\$13.46
Healthcare practitioners and technical occupations	70,574	77,272	6,698	9%	\$27.28	\$28.36
Total	385,158	413,663	28,505	0.07	20.54	22.78
WORKING CLASS: Occupations	2005 Jobs	2010 Jobs	Change	% Change	2011 Median Hourly Wage	2011 Avg Hourly Wage
Construction and extraction occupations	85,084	82,085	(2,999)	(4%)	\$14.95	\$16.67
Installation, maintenance, and repair occupations	59,658	58,473	(1,185)	(2%)	\$15.85	\$16.80
Production occupations	138,234	110,877	(27,357)	(20%)	\$13.43	\$14.00
Transportation and material moving occupations	109,912	102,549	(7,363)	(7%)	\$12.98	\$14.22
Total	392,888	353,985	-38,903	-0.1	14.06	15.15
SERVICE CLASS: Occupations	2005 Jobs	2010 Jobs	Change	% Change	2011 Median Hourly Wage	2011 Avg Hourly Wage
Community and social services occupations	18,320	20,674	2,354	13%	\$13.21	\$13.97
Healthcare support occupations	34,363	39,158	4,795	14%	\$10.06	\$10.60
Protective service occupations	31,756	32,923	1,167	4%	\$12.54	\$13.26
Food preparation and serving related occupations	97,429	98,953	1,524	2%	\$8.71	\$9.15
Building and grounds cleaning and maintenance occupations	55,491	60,843	5,352	10%	\$8.55	\$8.92
Personal care and service occupations	46,557	51,262	4,705	10%	\$9.33	\$10.31
Sales and related occupations	171,527	173,448	1,921	1%	\$11.19	\$13.14
Office and administrative support occupations	189,273	185,936	(3,337)	(2%)	\$12.59	\$13.35
Total	644,717	663,198	18,481	0.03	10.88	11.87

Source: EMSI Complete Employment - 4th Quarter 2011

*Does not include military or agriculture related occupations.