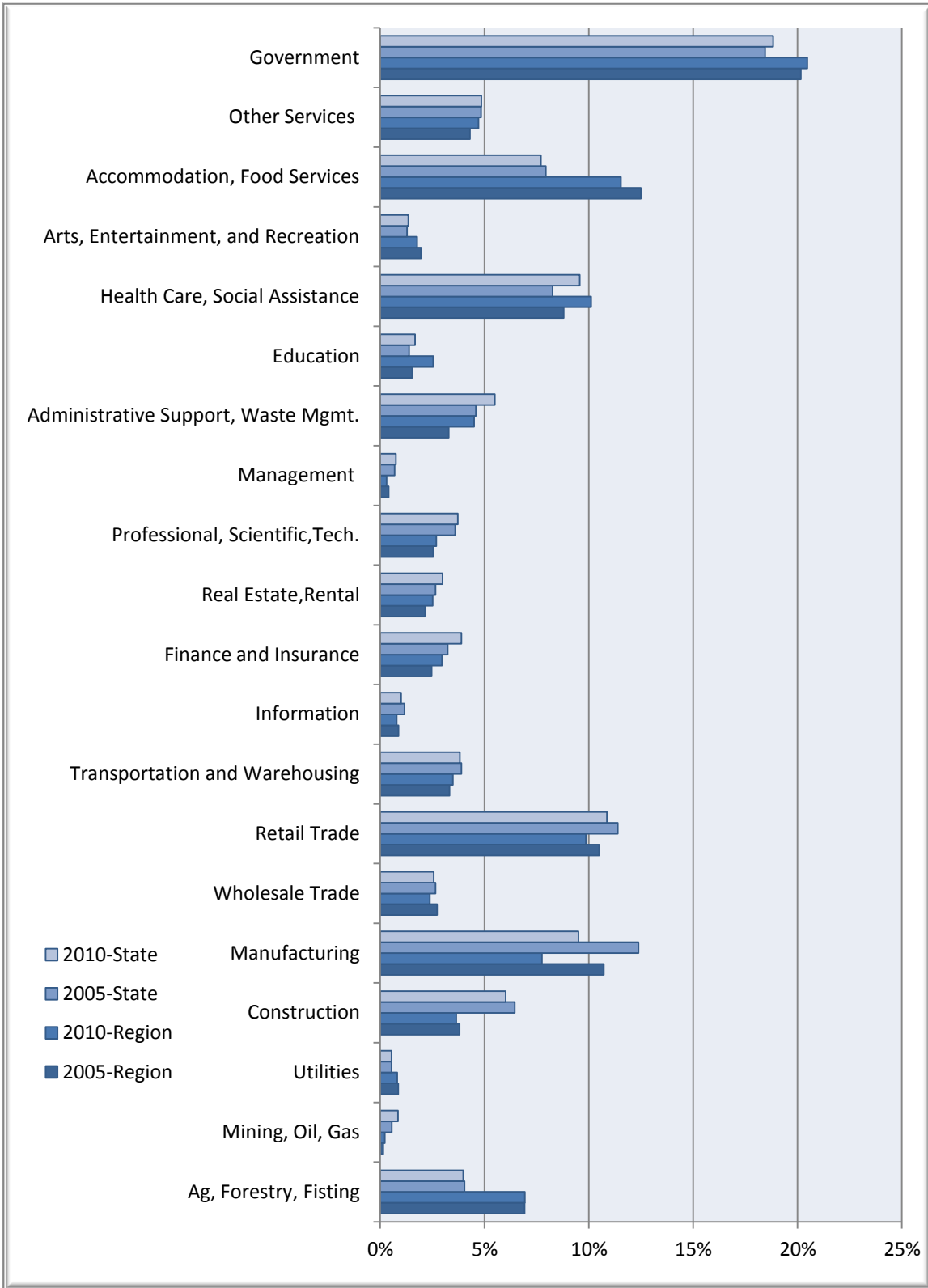


Businesses & Industries



Mississippi Delta Regional Data

Description	2005 Jobs	2010 Jobs	Change	% Change	2011 Wages, Salaries, & Proprietor Earnings	2011 Establishments
Agriculture, Forestry, Fishing and Hunting	11,887	11,588	(299)	(3%)	\$26,492	701
Mining, Quarrying, and Oil and Gas Extraction	258	369	111	43%	\$35,265	22
Utilities	1,491	1,378	(113)	(8%)	\$110,717	74
Construction	6,555	6,098	(457)	(7%)	\$35,003	505
Manufacturing	18,417	12,974	(5,443)	(30%)	\$36,587	227
Wholesale Trade	4,697	3,974	(723)	(15%)	\$45,753	380
Retail Trade	18,034	16,498	(1,536)	(9%)	\$23,616	1,395
Transportation and Warehousing	5,719	5,823	104	2%	\$39,120	392
Information	1,516	1,325	(191)	(13%)	\$35,605	125
Finance and Insurance	4,244	4,958	714	17%	\$34,596	495
Real Estate and Rental and Leasing	3,701	4,202	501	14%	\$18,662	326
Professional, Scientific, and Technical Services	4,379	4,505	126	3%	\$38,657	532
Management of Companies and Enterprises	694	519	(175)	(25%)	\$59,978	33
Administrative and Support and Waste Management and Remediation Services	5,655	7,522	1,867	33%	\$16,984	313
Educational Services	2,642	4,262	1,620	61%	\$20,055	49
Health Care and Social Assistance	15,118	16,902	1,784	12%	\$29,433	752
Arts, Entertainment, and Recreation	3,366	2,975	(391)	(12%)	\$23,483	90
Accommodation and Food Services	21,466	19,286	(2,180)	(10%)	\$21,951	508
Other Services (except Public Administration)	7,397	7,886	489	7%	\$18,727	605
Government	34,645	34,232	(413)	(1%)	\$35,601	631
Total	171,883	167,278	-4,605	-0.03	29,984	8,154

Source: EMSI Complete Employment - 4th Quarter 2010

Mississippi State Data

Description	2005 Jobs	2010 Jobs	Change	% Change	2011 Wages, Salaries, & Proprietor Earnings	2011 Establishments
Agriculture, Forestry, Fishing and Hunting	59,492	58,903	(589)	(1%)	\$27,868	1,735
Mining, Quarrying, and Oil and Gas Extraction	8,200	12,650	4,450	54%	\$50,510	499
Utilities	8,086	8,087	1	0%	\$68,426	506
Construction	94,711	88,916	(5,795)	(6%)	\$39,298	5,995
Manufacturing	181,975	140,402	(41,573)	(23%)	\$41,933	2,587
Wholesale Trade	39,000	37,886	(1,114)	(3%)	\$48,553	4,623
Retail Trade	167,287	160,481	(6,806)	(4%)	\$24,414	11,315
Transportation and Warehousing	57,198	56,536	(662)	(1%)	\$38,876	2,862
Information	17,098	14,870	(2,228)	(13%)	\$36,423	962
Finance and Insurance	47,563	57,464	9,901	21%	\$38,286	4,648
Real Estate and Rental and Leasing	39,010	44,207	5,197	13%	\$20,967	2,710
Professional, Scientific, and Technical Services	52,931	55,043	2,112	4%	\$44,277	5,957
Management of Companies and Enterprises	10,138	11,178	1,040	10%	\$65,748	477
Administrative and Support and Waste Management and Remediation Services	67,480	81,236	13,756	20%	\$18,870	3,389
Educational Services	20,487	24,705	4,218	21%	\$23,458	543
Health Care and Social Assistance	121,429	141,394	19,965	16%	\$37,959	6,071
Arts, Entertainment, and Recreation	18,895	20,046	1,151	6%	\$16,126	691
Accommodation and Food Services	116,683	113,858	(2,825)	(2%)	\$16,676	5,027
Other Services (except Public Administration)	71,094	71,584	490	1%	\$22,164	5,023
Government	271,103	278,291	7,188	3%	\$37,226	3,588
Total	1,469,859	1,477,736	7,877	0.01	32,810	69,206

Source: EMSI Complete Employment - 4th Quarter 2010