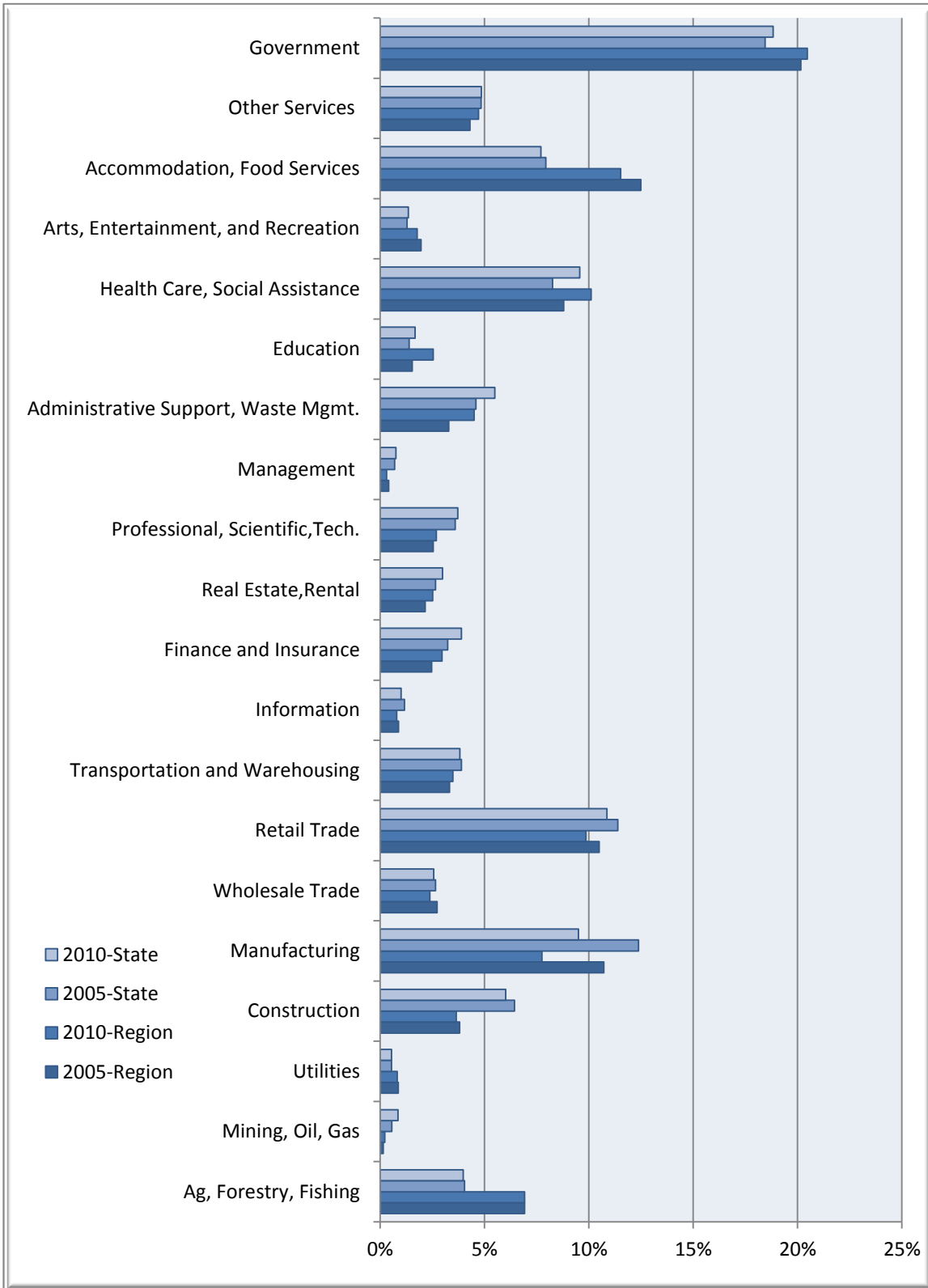


Businesses & Industries



Mississippi Delta Regional Data

| Description | 2005 Jobs | 2010 Jobs | Change | % Change | 2011 Wages, Salaries, & Proprietor Earnings | 2011 Establishments |
|---|-----------|-----------|---------|----------|---|---------------------|
| Agriculture, Forestry, Fishing and Hunting | 11,887 | 11,588 | (299) | (3%) | \$26,492 | 701 |
| Mining, Quarrying, and Oil and Gas Extraction | 258 | 369 | 111 | 43% | \$35,265 | 22 |
| Utilities | 1,491 | 1,378 | (113) | (8%) | \$110,717 | 74 |
| Construction | 6,555 | 6,098 | (457) | (7%) | \$35,003 | 505 |
| Manufacturing | 18,417 | 12,974 | (5,443) | (30%) | \$36,587 | 227 |
| Wholesale Trade | 4,697 | 3,974 | (723) | (15%) | \$45,753 | 380 |
| Retail Trade | 18,034 | 16,498 | (1,536) | (9%) | \$23,616 | 1,395 |
| Transportation and Warehousing | 5,719 | 5,823 | 104 | 2% | \$39,120 | 392 |
| Information | 1,516 | 1,325 | (191) | (13%) | \$35,605 | 125 |
| Finance and Insurance | 4,244 | 4,958 | 714 | 17% | \$34,596 | 495 |
| Real Estate and Rental and Leasing | 3,701 | 4,202 | 501 | 14% | \$18,662 | 326 |
| Professional, Scientific, and Technical Services | 4,379 | 4,505 | 126 | 3% | \$38,657 | 532 |
| Management of Companies and Enterprises | 694 | 519 | (175) | (25%) | \$59,978 | 33 |
| Administrative and Support and Waste Management and Remediation Services | 5,655 | 7,522 | 1,867 | 33% | \$16,984 | 313 |
| Educational Services | 2,642 | 4,262 | 1,620 | 61% | \$20,055 | 49 |
| Health Care and Social Assistance | 15,118 | 16,902 | 1,784 | 12% | \$29,433 | 752 |
| Arts, Entertainment, and Recreation | 3,366 | 2,975 | (391) | (12%) | \$23,483 | 90 |
| Accommodation and Food Services | 21,466 | 19,286 | (2,180) | (10%) | \$21,951 | 508 |
| Other Services (except Public Administration) | 7,397 | 7,886 | 489 | 7% | \$18,727 | 605 |
| Government | 34,645 | 34,232 | (413) | (1%) | \$35,601 | 631 |
| Total | 171,883 | 167,278 | -4,605 | -0.03 | 29,984 | 8,154 |

Source: EMSI Complete Employment - 4th Quarter 2010

Mississippi State Data

| Description | 2005 Jobs | 2010 Jobs | Change | % Change | 2011 Wages, Salaries, & Proprietor Earnings | 2011 Establishments |
|---|-----------|-----------|----------|----------|---|---------------------|
| Agriculture, Forestry, Fishing and Hunting | 59,492 | 58,903 | (589) | (1%) | \$27,868 | 1,735 |
| Mining, Quarrying, and Oil and Gas Extraction | 8,200 | 12,650 | 4,450 | 54% | \$50,510 | 499 |
| Utilities | 8,086 | 8,087 | 1 | 0% | \$68,426 | 506 |
| Construction | 94,711 | 88,916 | (5,795) | (6%) | \$39,298 | 5,995 |
| Manufacturing | 181,975 | 140,402 | (41,573) | (23%) | \$41,933 | 2,587 |
| Wholesale Trade | 39,000 | 37,886 | (1,114) | (3%) | \$48,553 | 4,623 |
| Retail Trade | 167,287 | 160,481 | (6,806) | (4%) | \$24,414 | 11,315 |
| Transportation and Warehousing | 57,198 | 56,536 | (662) | (1%) | \$38,876 | 2,862 |
| Information | 17,098 | 14,870 | (2,228) | (13%) | \$36,423 | 962 |
| Finance and Insurance | 47,563 | 57,464 | 9,901 | 21% | \$38,286 | 4,648 |
| Real Estate and Rental and Leasing | 39,010 | 44,207 | 5,197 | 13% | \$20,967 | 2,710 |
| Professional, Scientific, and Technical Services | 52,931 | 55,043 | 2,112 | 4% | \$44,277 | 5,957 |
| Management of Companies and Enterprises | 10,138 | 11,178 | 1,040 | 10% | \$65,748 | 477 |
| Administrative and Support and Waste Management and Remediation Services | 67,480 | 81,236 | 13,756 | 20% | \$18,870 | 3,389 |
| Educational Services | 20,487 | 24,705 | 4,218 | 21% | \$23,458 | 543 |
| Health Care and Social Assistance | 121,429 | 141,394 | 19,965 | 16% | \$37,959 | 6,071 |
| Arts, Entertainment, and Recreation | 18,895 | 20,046 | 1,151 | 6% | \$16,126 | 691 |
| Accommodation and Food Services | 116,683 | 113,858 | (2,825) | (2%) | \$16,676 | 5,027 |
| Other Services (except Public Administration) | 71,094 | 71,584 | 490 | 1% | \$22,164 | 5,023 |
| Government | 271,103 | 278,291 | 7,188 | 3% | \$37,226 | 3,588 |
| Total | 1,469,859 | 1,477,736 | 7,877 | 0.01 | 32,810 | 69,206 |

Source: EMSI Complete Employment - 4th Quarter 2010