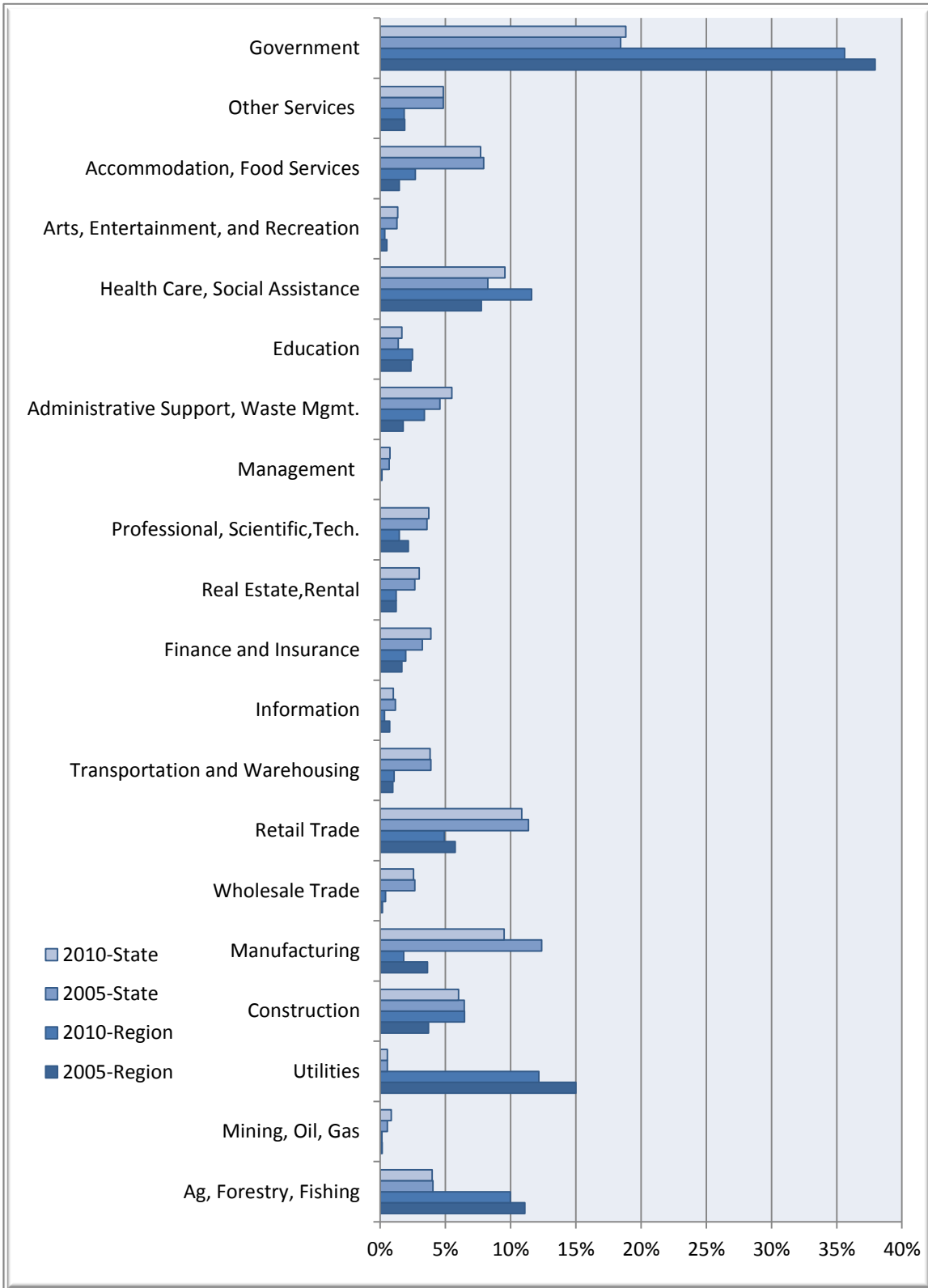


Percent of Jobs by Industry

Southwest Region
Mississippi

Businesses & Industries



Southwest Regional Data

Description	2005 Jobs	2010 Jobs	Change	% Change	2011 Wages, Salaries, & Proprietor Earnings	2011 Establishments
Agriculture, Forestry, Fishing and Hunting	731	690	(41)	(6%)	\$26,038	9
Mining, Quarrying, and Oil and Gas Extraction	<10	<10	--	--	--	--
Utilities	989	841	(148)	(15%)	\$149,685	14
Construction	245	447	202	82%	\$47,571	15
Manufacturing	240	125	(115)	(48%)	\$31,285	6
Wholesale Trade	12	29	17	142%	\$47,698	3
Retail Trade	380	340	(40)	(11%)	\$20,744	41
Transportation and Warehousing	64	74	10	16%	\$35,883	7
Information	48	23	(25)	(52%)	\$34,289	5
Finance and Insurance	110	136	26	24%	\$30,661	10
Real Estate and Rental and Leasing	81	85	4	5%	\$8,101	4
Professional, Scientific, and Technical Services	143	102	(41)	(29%)	\$46,428	14
Management of Companies and Enterprises	0	<10	--	--	--	--
Administrative and Support and Waste Management and Remediation Services	117	235	118	101%	\$14,994	10
Educational Services	156	171	15	10%	\$12,209	3
Health Care and Social Assistance	512	803	291	57%	\$24,866	31
Arts, Entertainment, and Recreation	34	25	(9)	(26%)	\$6,992	2
Accommodation and Food Services	97	187	90	93%	\$13,047	14
Other Services (except Public Administration)	124	127	3	2%	\$14,173	13
Government	2,503	2,461	(42)	(2%)	\$30,885	40
Total	6,595	6,911	316	0.05	42,880	243

Source: EMSI Complete Employment - 4th Quarter 2010

Mississippi State Data

Description	2005 Jobs	2010 Jobs	Change	% Change	2011 Wages, Salaries, & Proprietor Earnings	2011 Establishments
Agriculture, Forestry, Fishing and Hunting	59,492	58,903	(589)	(1%)	\$27,868	1,735
Mining, Quarrying, and Oil and Gas Extraction	8,200	12,650	4,450	54%	\$50,510	499
Utilities	8,086	8,087	1	0%	\$68,426	506
Construction	94,711	88,916	(5,795)	(6%)	\$39,298	5,995
Manufacturing	181,975	140,402	(41,573)	(23%)	\$41,933	2,587
Wholesale Trade	39,000	37,886	(1,114)	(3%)	\$48,553	4,623
Retail Trade	167,287	160,481	(6,806)	(4%)	\$24,414	11,315
Transportation and Warehousing	57,198	56,536	(662)	(1%)	\$38,876	2,862
Information	17,098	14,870	(2,228)	(13%)	\$36,423	962
Finance and Insurance	47,563	57,464	9,901	21%	\$38,286	4,648
Real Estate and Rental and Leasing	39,010	44,207	5,197	13%	\$20,967	2,710
Professional, Scientific, and Technical Services	52,931	55,043	2,112	4%	\$44,277	5,957
Management of Companies and Enterprises	10,138	11,178	1,040	10%	\$65,748	477
Administrative and Support and Waste Management and Remediation Services	67,480	81,236	13,756	20%	\$18,870	3,389
Educational Services	20,487	24,705	4,218	21%	\$23,458	543
Health Care and Social Assistance	121,429	141,394	19,965	16%	\$37,959	6,071
Arts, Entertainment, and Recreation	18,895	20,046	1,151	6%	\$16,126	691
Accommodation and Food Services	116,683	113,858	(2,825)	(2%)	\$16,676	5,027
Other Services (except Public Administration)	71,094	71,584	490	1%	\$22,164	5,023
Government	271,103	278,291	7,188	3%	\$37,226	3,588
Total	1,469,859	1,477,736	7,877	0.01	32,810	69,206

Source: EMSI Complete Employment - 4th Quarter 2010