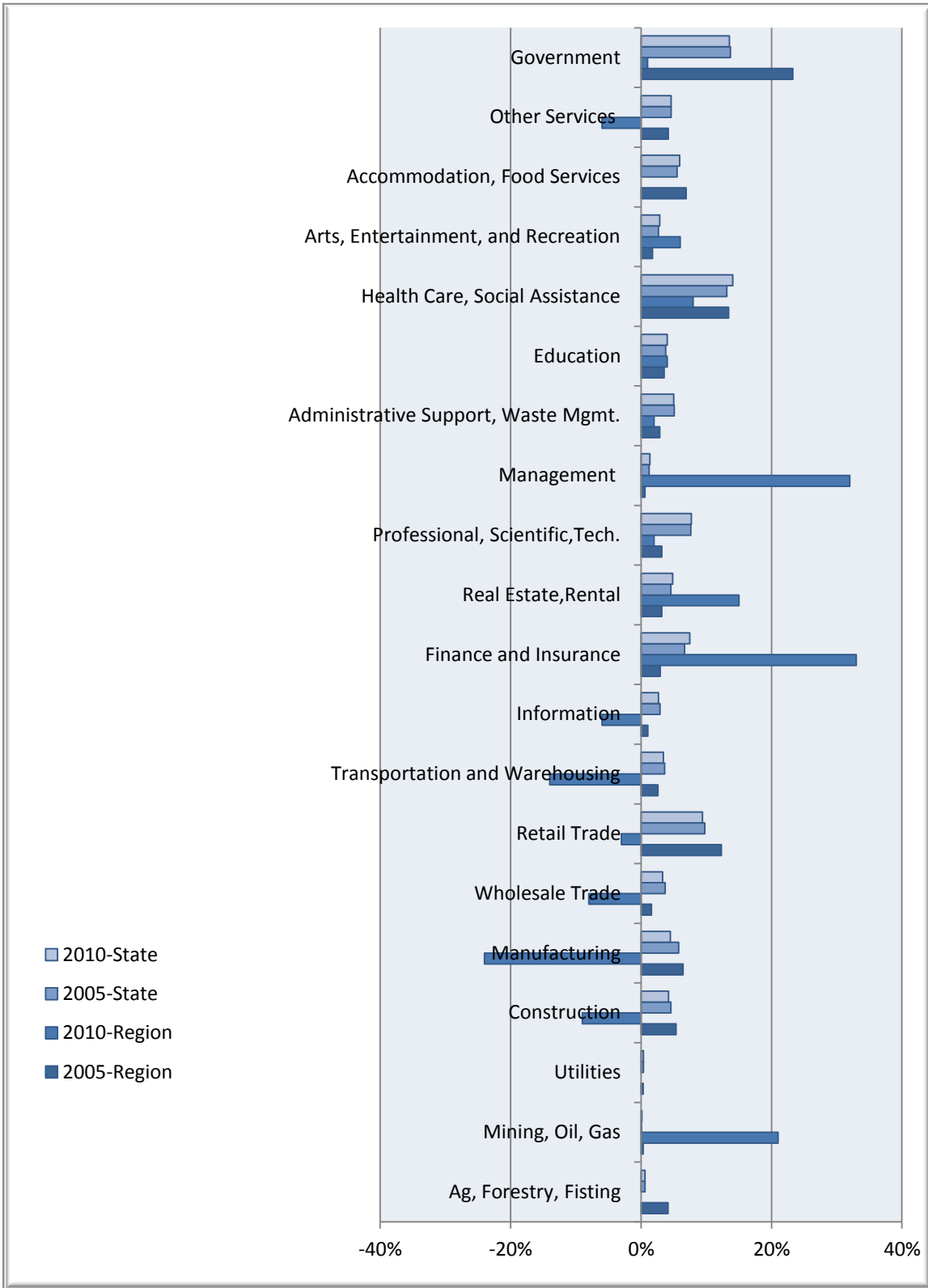


Businesses & Industries



NNY Regional Data

Description	2005 Jobs	2010 Jobs	Change	% Change	2011 Wages, Salaries, & Proprietor Earnings	2011 Establishments
Agriculture, Forestry, Fishing and Hunting	6,079	6,077	(2)	0%	\$24,345	194
Mining, Quarrying, and Oil and Gas Extraction	413	499	86	21%	\$45,194	19
Utilities	490	489	(1)	0%	\$86,807	39
Construction	8,714	7,913	(801)	(9%)	\$37,327	759
Manufacturing	12,422	9,474	(2,948)	(24%)	\$51,838	284
Wholesale Trade	2,539	2,342	(197)	(8%)	\$43,882	243
Retail Trade	18,565	18,094	(471)	(3%)	\$22,710	1,256
Transportation and Warehousing	4,422	3,788	(634)	(14%)	\$32,791	365
Information	1,598	1,504	(94)	(6%)	\$34,217	131
Finance and Insurance	3,239	4,314	1,075	33%	\$38,699	312
Real Estate and Rental and Leasing	4,036	4,652	616	15%	\$12,174	242
Professional, Scientific, and Technical Services	4,590	4,700	110	2%	\$34,288	428
Management of Companies and Enterprises	656	863	207	32%	\$40,653	36
Administrative and Support and Waste Management and Remediation Services	4,127	4,214	87	2%	\$19,722	242
Educational Services	5,005	5,187	182	4%	\$37,938	57
Health Care and Social Assistance	18,328	19,746	1,418	8%	\$35,253	779
Arts, Entertainment, and Recreation	2,433	2,574	141	6%	\$13,057	170
Accommodation and Food Services	10,134	10,180	46	0%	\$16,329	804
Other Services (except Public Administration)	6,560	6,136	(424)	(6%)	\$20,643	732
Government	33,870	34,183	313	1%	\$45,381	484
Total	148,219	146,928	-1,291	-0.01	33,707	7,576

Source: EMSI Complete Employment - 4th Quarter 2010

New York State Data

Description	2005 Jobs	2010 Jobs	Change	% Change	2011 Wages, Salaries, & Proprietor Earnings	2011 Establishments
Agriculture, Forestry, Fishing and Hunting	65,153	64,125	(1,028)	(2%)	\$25,632	2,475
Mining, Quarrying, and Oil and Gas Extraction	9,697	13,471	3,774	39%	\$40,163	406
Utilities	40,453	39,758	(695)	(2%)	\$97,625	616
Construction	482,028	460,003	(22,025)	(5%)	\$54,892	50,448
Manufacturing	605,236	487,559	(117,677)	(19%)	\$59,210	19,723
Wholesale Trade	388,148	360,005	(28,143)	(7%)	\$74,012	39,068
Retail Trade	1,028,707	1,021,704	(7,003)	(1%)	\$29,743	77,207
Transportation and Warehousing	382,395	370,789	(11,606)	(3%)	\$42,858	14,801
Information	308,108	288,235	(19,873)	(6%)	\$88,957	12,722
Finance and Insurance	702,344	813,185	110,841	16%	\$148,281	31,262
Real Estate and Rental and Leasing	480,037	525,554	45,517	9%	\$31,377	34,524
Professional, Scientific, and Technical Services	801,629	836,836	35,207	4%	\$85,618	67,403
Management of Companies and Enterprises	129,433	145,703	16,270	13%	\$132,213	4,227
Administrative and Support and Waste Management and Remediation Services	535,211	542,332	7,121	1%	\$37,235	31,636
Educational Services	396,154	438,382	42,228	11%	\$42,769	8,821
Health Care and Social Assistance	1,383,472	1,525,071	141,599	10%	\$44,317	59,650
Arts, Entertainment, and Recreation	279,941	309,847	29,906	11%	\$33,973	11,854
Accommodation and Food Services	584,034	644,775	60,741	10%	\$23,041	46,866
Other Services (except Public Administration)	488,048	503,123	15,075	3%	\$32,493	68,169
Government	1,442,504	1,470,883	28,379	2%	\$53,853	8,345
Total	10,532,731	10,861,340	328,609	0.03	56,597	590,223

Source: EMSI Complete Employment - 4th Quarter 2010