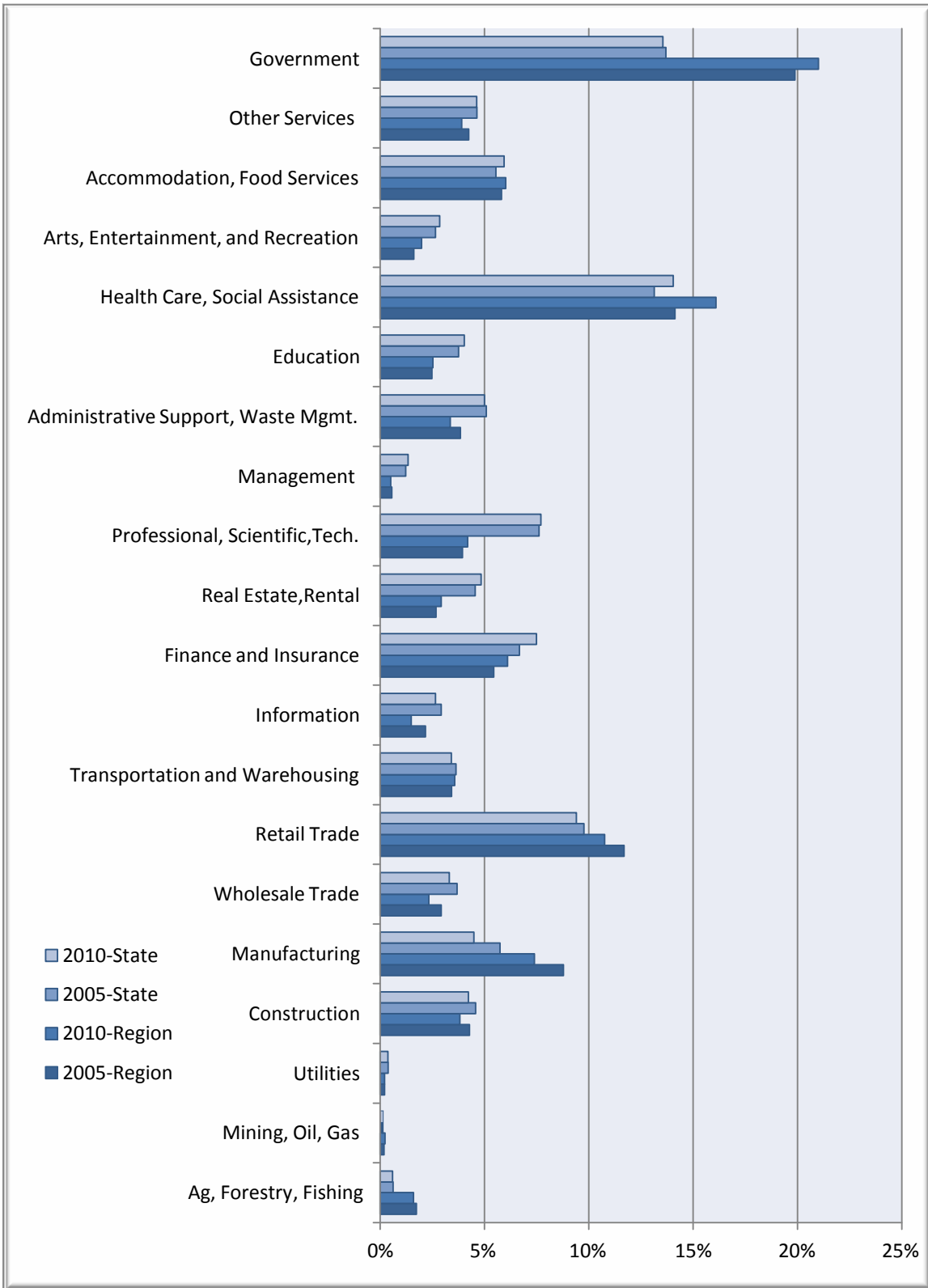


Percent of Jobs by Industry

CAMP Region
New York

Businesses & Industries



CAMP Regional Data

Description	2005 Jobs	2010 Jobs	Change	% Change	2011 Wages, Salaries, & Proprietor Earnings	2011 Establishments
Agriculture, Forestry, Fishing and Hunting	2,796	2,543	(253)	(9%)	\$20,805	68
Mining, Quarrying, and Oil and Gas Extraction	291	365	74	25%	\$38,072	17
Utilities	335	330	(5)	(1%)	\$79,807	11
Construction	6,872	6,087	(785)	(11%)	\$38,608	686
Manufacturing	14,128	11,789	(2,339)	(17%)	\$46,490	342
Wholesale Trade	4,706	3,712	(994)	(21%)	\$46,078	303
Retail Trade	18,794	17,138	(1,656)	(9%)	\$22,869	1,052
Transportation and Warehousing	5,498	5,689	191	3%	\$37,710	236
Information	3,495	2,375	(1,120)	(32%)	\$38,365	113
Finance and Insurance	8,763	9,721	958	11%	\$49,802	361
Real Estate and Rental and Leasing	4,305	4,657	352	8%	\$12,387	231
Professional, Scientific, and Technical Services	6,348	6,683	335	5%	\$44,145	535
Management of Companies and Enterprises	890	811	(79)	(9%)	\$64,079	38
Administrative and Support and Waste Management and Remediation Services	6,183	5,366	(817)	(13%)	\$23,532	289
Educational Services	3,980	4,034	54	1%	\$32,247	49
Health Care and Social Assistance	22,717	25,634	2,917	13%	\$33,255	773
Arts, Entertainment, and Recreation	2,593	3,155	562	22%	\$14,566	152
Accommodation and Food Services	9,346	9,597	251	3%	\$14,229	762
Other Services (except Public Administration)	6,821	6,236	(585)	(9%)	\$21,594	719
Government	31,959	33,462	1,503	5%	\$44,088	319
Total	160,822	159,384	-1,438	-0.01	34,679	7,055

Source: EMSI Complete Employment - 4th Quarter 2010

New York State Data

Description	2005 Jobs	2010 Jobs	Change	% Change	2011 Wages, Salaries, & Proprietor Earnings	2011 Establishments
Agriculture, Forestry, Fishing and Hunting	65,153	64,125	(1,028)	(2%)	\$25,632	2,475
Mining, Quarrying, and Oil and Gas Extraction	9,697	13,471	3,774	39%	\$40,163	406
Utilities	40,453	39,758	(695)	(2%)	\$97,625	616
Construction	482,028	460,003	(22,025)	(5%)	\$54,892	50,448
Manufacturing	605,236	487,559	(117,677)	(19%)	\$59,210	19,723
Wholesale Trade	388,148	360,005	(28,143)	(7%)	\$74,012	39,068
Retail Trade	1,028,707	1,021,704	(7,003)	(1%)	\$29,743	77,207
Transportation and Warehousing	382,395	370,789	(11,606)	(3%)	\$42,858	14,801
Information	308,108	288,235	(19,873)	(6%)	\$88,957	12,722
Finance and Insurance	702,344	813,185	110,841	16%	\$148,281	31,262
Real Estate and Rental and Leasing	480,037	525,554	45,517	9%	\$31,377	34,524
Professional, Scientific, and Technical Services	801,629	836,836	35,207	4%	\$85,618	67,403
Management of Companies and Enterprises	129,433	145,703	16,270	13%	\$132,213	4,227
Administrative and Support and Waste Management and Remediation Services	535,211	542,332	7,121	1%	\$37,235	31,636
Educational Services	396,154	438,382	42,228	11%	\$42,769	8,821
Health Care and Social Assistance	1,383,472	1,525,071	141,599	10%	\$44,317	59,650
Arts, Entertainment, and Recreation	279,941	309,847	29,906	11%	\$33,973	11,854
Accommodation and Food Services	584,034	644,775	60,741	10%	\$23,041	46,866
Other Services (except Public Administration)	488,048	503,123	15,075	3%	\$32,493	68,169
Government	1,442,504	1,470,883	28,379	2%	\$53,853	8,345
Total	10,532,731	10,861,340	328,609	0.03	56,597	590,223

Source: EMSI Complete Employment - 4th Quarter 2010