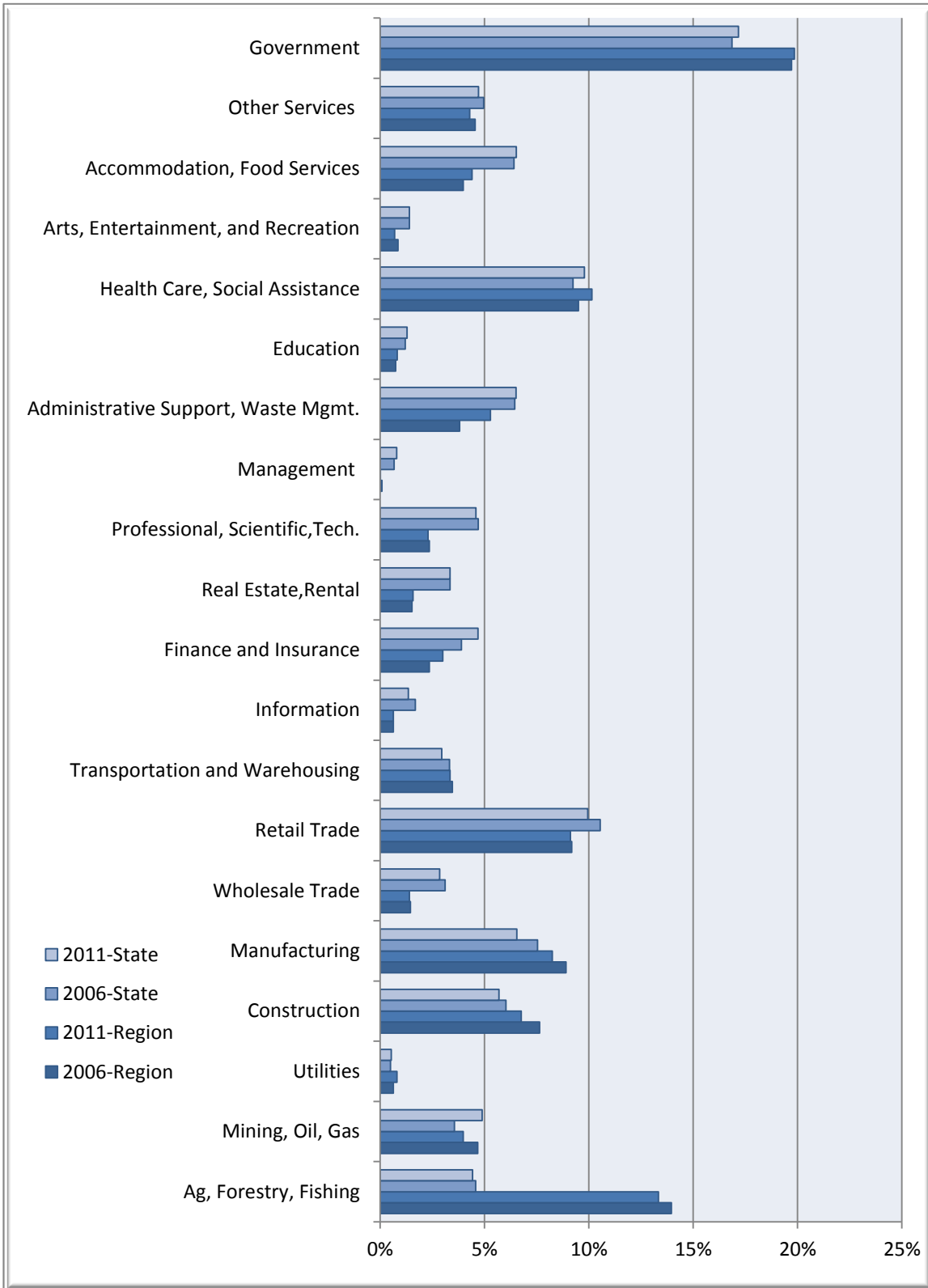


Percent of Jobs by Industry

KIAMICHI REGIONAL TRIANGLE

Business and Industry



KIAMICHI REGIONAL TRIANGLE DATA

Description	2006 Jobs	2011 Jobs	Change	% Change	2011 Wages, Salaries, & Proprietor Earnings	2011 Establishments
Agriculture, Forestry, Fishing and Hunting	7,849	6,878	(971)	(12%)	\$19,562	64
Mining, Quarrying, and Oil and Gas Extraction	2,707	2,350	(357)	(13%)	\$58,676	100
Utilities	386	509	123	32%	\$85,514	32
Construction	4,578	3,968	(610)	(13%)	\$33,189	192
Manufacturing	5,403	4,919	(484)	(9%)	\$42,739	96
Wholesale Trade	897	817	(80)	(9%)	\$37,069	91
Retail Trade	5,592	5,586	(6)	0%	\$22,483	376
Transportation and Warehousing	1,809	1,829	20	1%	\$46,140	76
Information	390	396	6	2%	\$37,842	38
Finance and Insurance	1,421	1,844	423	30%	\$26,442	173
Real Estate and Rental and Leasing	929	995	66	7%	\$14,696	48
Professional, Scientific, and Technical Services	1,404	1,368	(36)	(3%)	\$29,619	181
Management of Companies and Enterprises	51	<10	--	--	--	--
Administrative and Support and Waste Management and Remediation Services	2,236	2,637	401	18%	\$15,868	91
Educational Services	455	506	51	11%	\$21,452	2
Health Care and Social Assistance	5,812	6,017	205	4%	\$26,949	249
Arts, Entertainment, and Recreation	522	427	(95)	(18%)	\$11,100	18
Accommodation and Food Services	2,419	2,540	121	5%	\$15,588	154
Other Services (except Public Administration)	3,487	3,187	(300)	(9%)	\$20,528	159
Government	12,215	12,307	92	1%	\$42,808	421
Total	60561	59087	(1474)	(0.02)	31758	2564

Source: EMSI Complete Employment - 4th Quarter 2011

Oklahoma State Data

Description	2006 Jobs	2011 Jobs	Change	% Change	2011 Wages, Salaries, & Proprietor Earnings	2011 Establishments
Agriculture, Forestry, Fishing and Hunting	90,098	94,446	4,348	5%	\$22,196	808
Mining, Quarrying, and Oil and Gas Extraction	73,655	108,863	35,208	48%	\$72,670	3,185
Utilities	10,210	11,657	1,447	14%	\$109,412	427
Construction	124,560	122,337	(2,223)	(2%)	\$40,350	9,377
Manufacturing	156,946	135,429	(21,517)	(14%)	\$60,342	4,456
Wholesale Trade	65,220	62,369	(2,851)	(4%)	\$57,831	6,584
Retail Trade	218,097	211,760	(6,337)	(3%)	\$27,986	12,575
Transportation and Warehousing	60,715	57,470	(3,245)	(5%)	\$55,289	2,714
Information	35,307	29,328	(5,979)	(17%)	\$52,453	1,658
Finance and Insurance	80,430	102,923	22,493	28%	\$50,250	6,725
Real Estate and Rental and Leasing	69,299	74,052	4,753	7%	\$25,654	3,713
Professional, Scientific, and Technical Services	97,425	104,898	7,473	8%	\$49,460	11,333
Management of Companies and Enterprises	13,716	17,334	3,618	26%	\$84,440	499
Administrative and Support and Waste Management and Remediation Services	132,885	129,428	(3,457)	(3%)	\$30,060	6,624
Educational Services	25,192	27,923	2,731	11%	\$26,250	774
Health Care and Social Assistance	191,026	207,823	16,797	9%	\$45,923	10,741
Arts, Entertainment, and Recreation	28,935	30,636	1,701	6%	\$20,528	1,024
Accommodation and Food Services	132,640	138,184	5,544	4%	\$16,756	6,834
Other Services (except Public Administration)	121,159	119,403	(1,756)	(1%)	\$21,204	6,669
Government	364,331	367,092	2,761	1%	\$54,330	5,737
Total	2091847	2153352	61505	0.03	42945	102453

Source: EMSI Complete Employment - 4th Quarter 2011