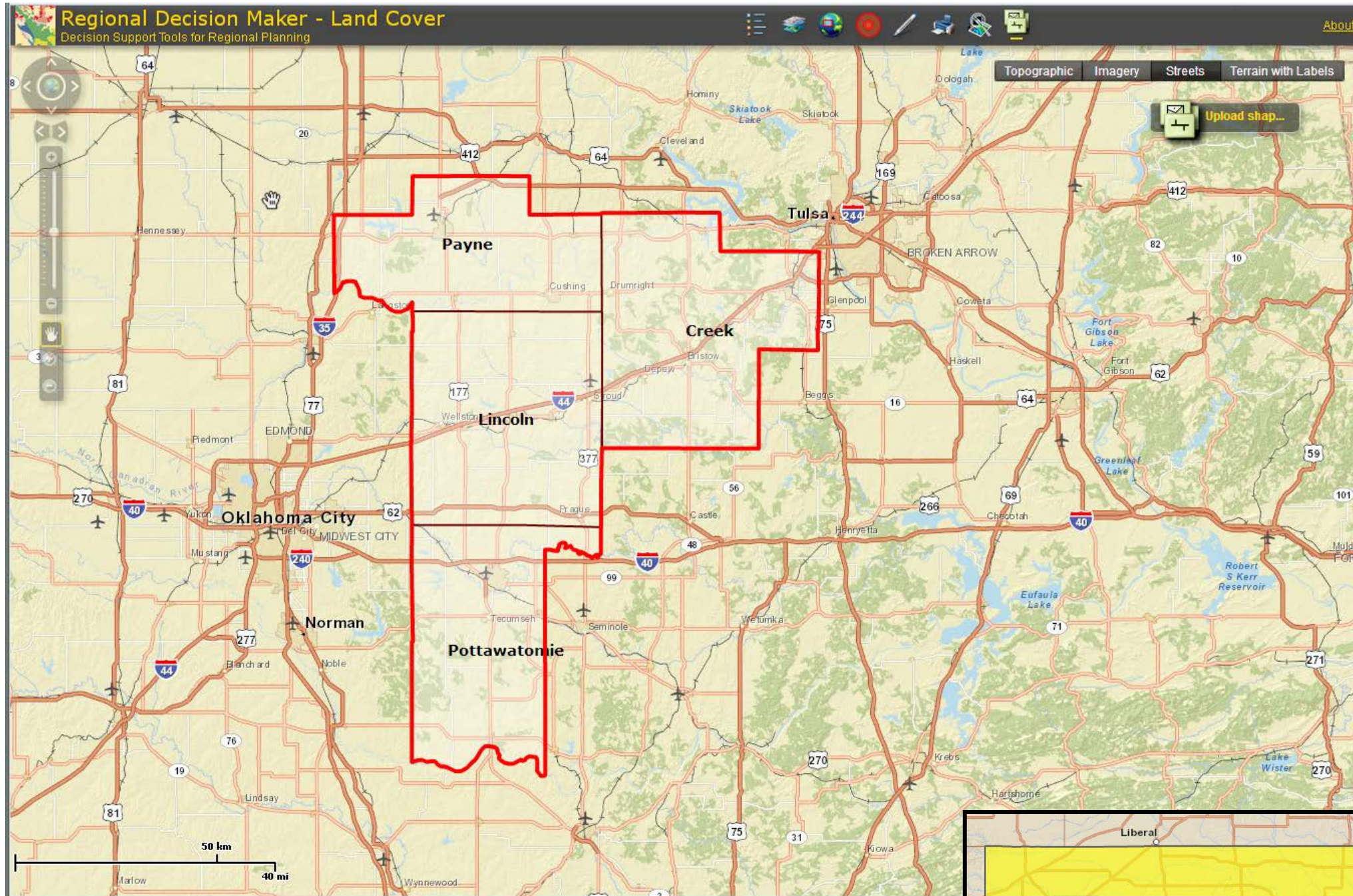


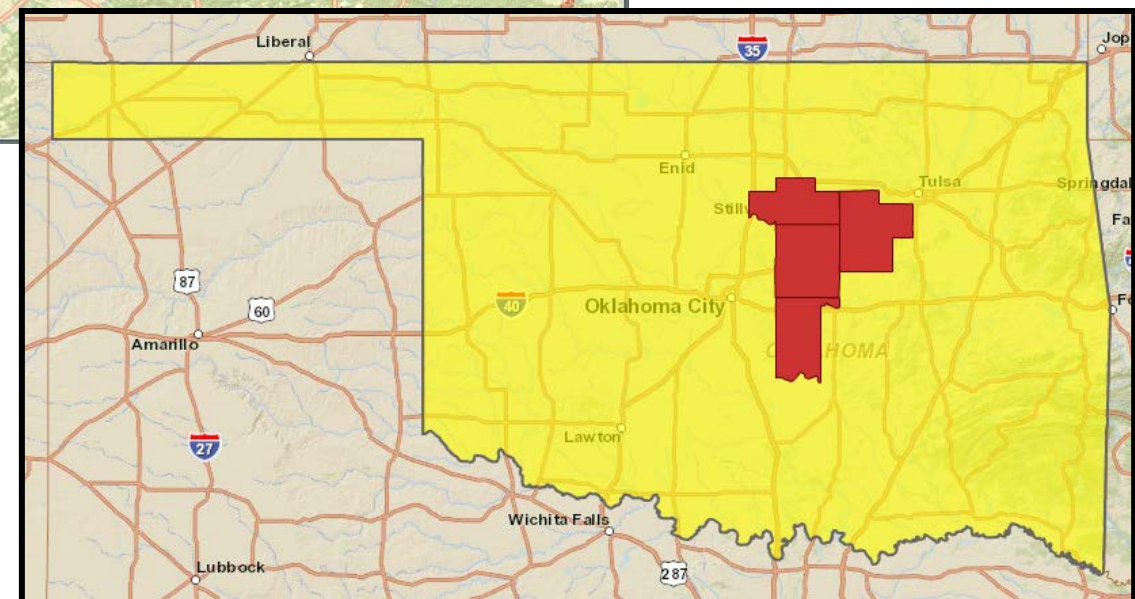
# Route 66 Community Partners (4-County) Region



The region includes the following counties:

- Creek,
- Lincoln,
- Payne,
- Pottawatomie

Source: RDM, PCRD & ESRI



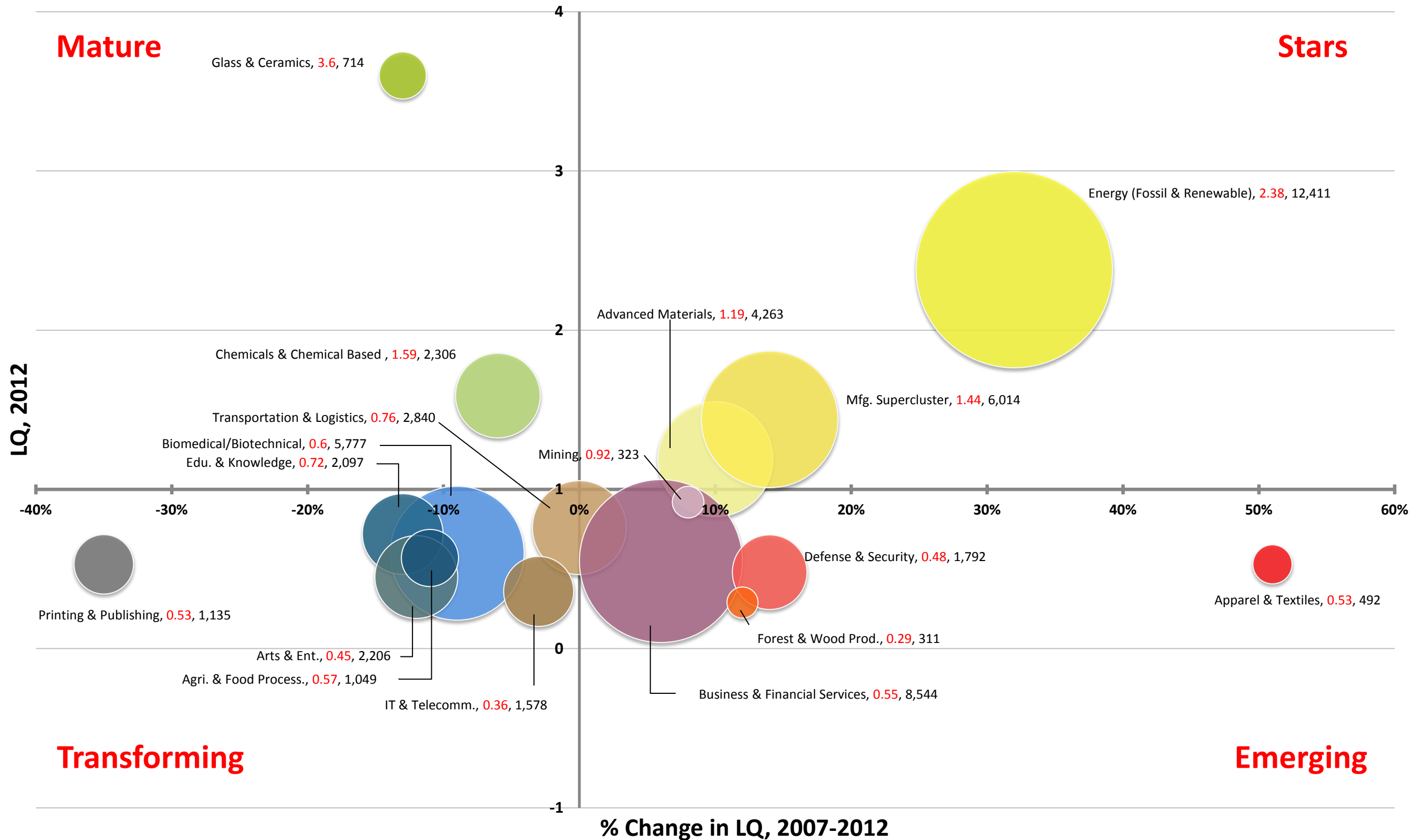


# Route 66 Community Partners: Economic Attributes

<b>Economic &amp; Demographic Attributes</b>	<b>Value</b>	<b>Remarks</b>	<b>Source</b>
Population (2012)	253,999	People living in the region	Census
Jobs (2012)	125,712	Full and part-time jobs	EMSI (QCEW, BLS; BEA)
Average Earnings (2012)	\$36,637	Include wages, salaries, supplements and proprietor income	EMSI (BLS; BEA)
Completions (2010)	6,846	Students completing a specific course of study	EMSI (NCES; IPEDS)
GRP, Gross Regional Product (2011)	\$6,822,610,380	Final market value of all goods and services produced in the region	EMSI (BEA; QCEW, BLS)
Exports (2011)	\$10,339,678,378	\$ earned from selling goods and services to foreign and external domestic regions	EMSI model (BEA)
Imports (2011)	\$11,973,435,438	\$ spent on procuring goods and services from foreign and external domestic region	EMSI model (BEA)

# Route 66 Community Partners

## Industry Cluster Analysis, 2007-2012

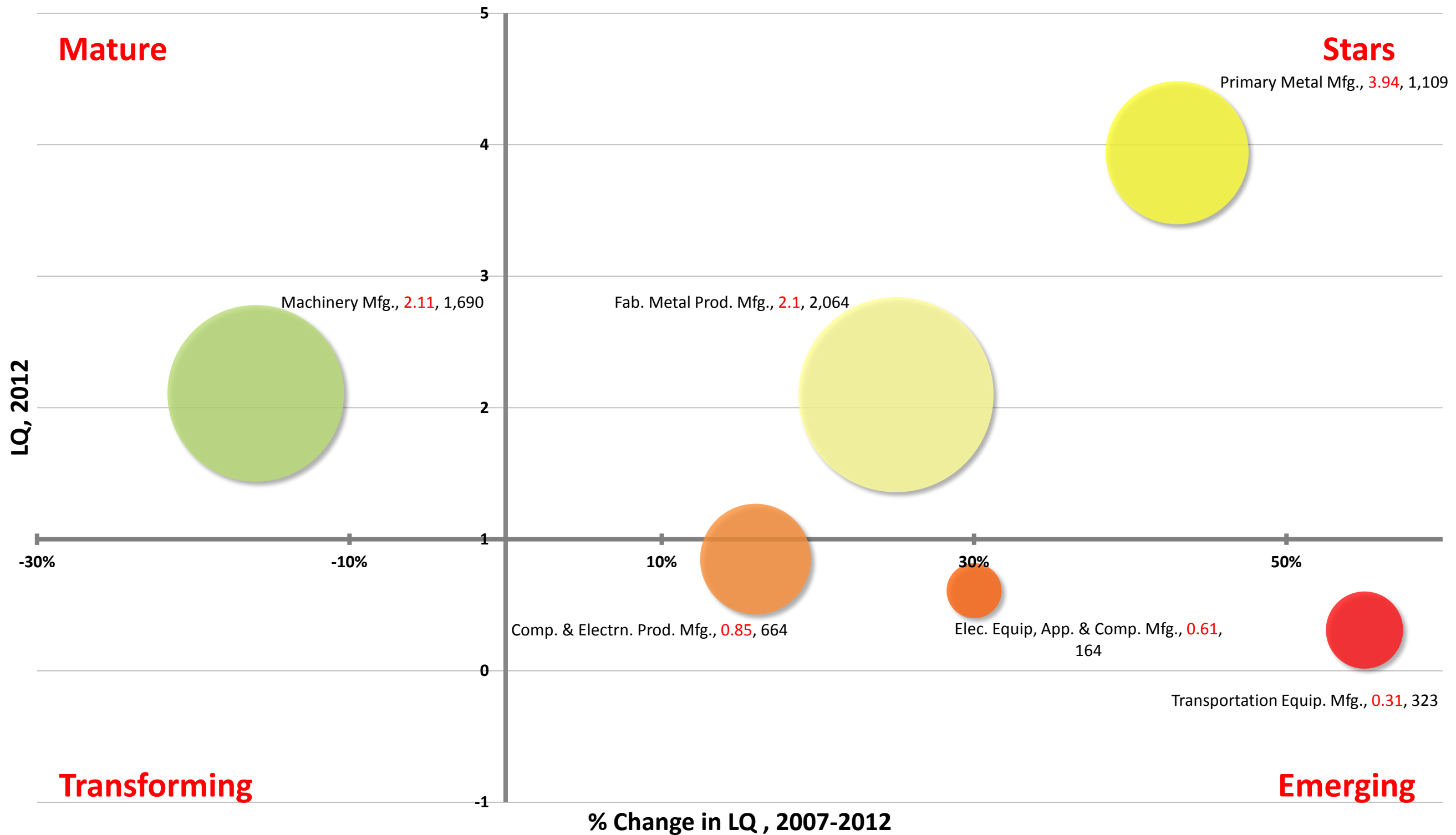


Note: Label includes cluster name, LQ 2012, and Employment 2012

Data Source: EMSI 2012.4, industry cluster definitions by PCRD

# Route 66 Community Partners

## Manufacturing Sub Cluster Analysis, 2007-2012



Note: Label includes cluster name, LQ 2012, and Employment 2012

Data Source: EMSI 2012.4, industry cluster definitions by PCRD

# Industry Cluster Analysis, 2007-2012

## Mature

- Glass & Ceramics
- Chemicals & Chemical Based Products
- Machinery Manufacturing

## Stars

- Energy (Fossil & Renewable)
- Advanced Materials
- Manufacturing Supercluster
- Fabricated Metal Product Manufacturing
- Primary Metal Manufacturing

Level of Specialization

Percent Growth in Specialization

## TRANSFORMING

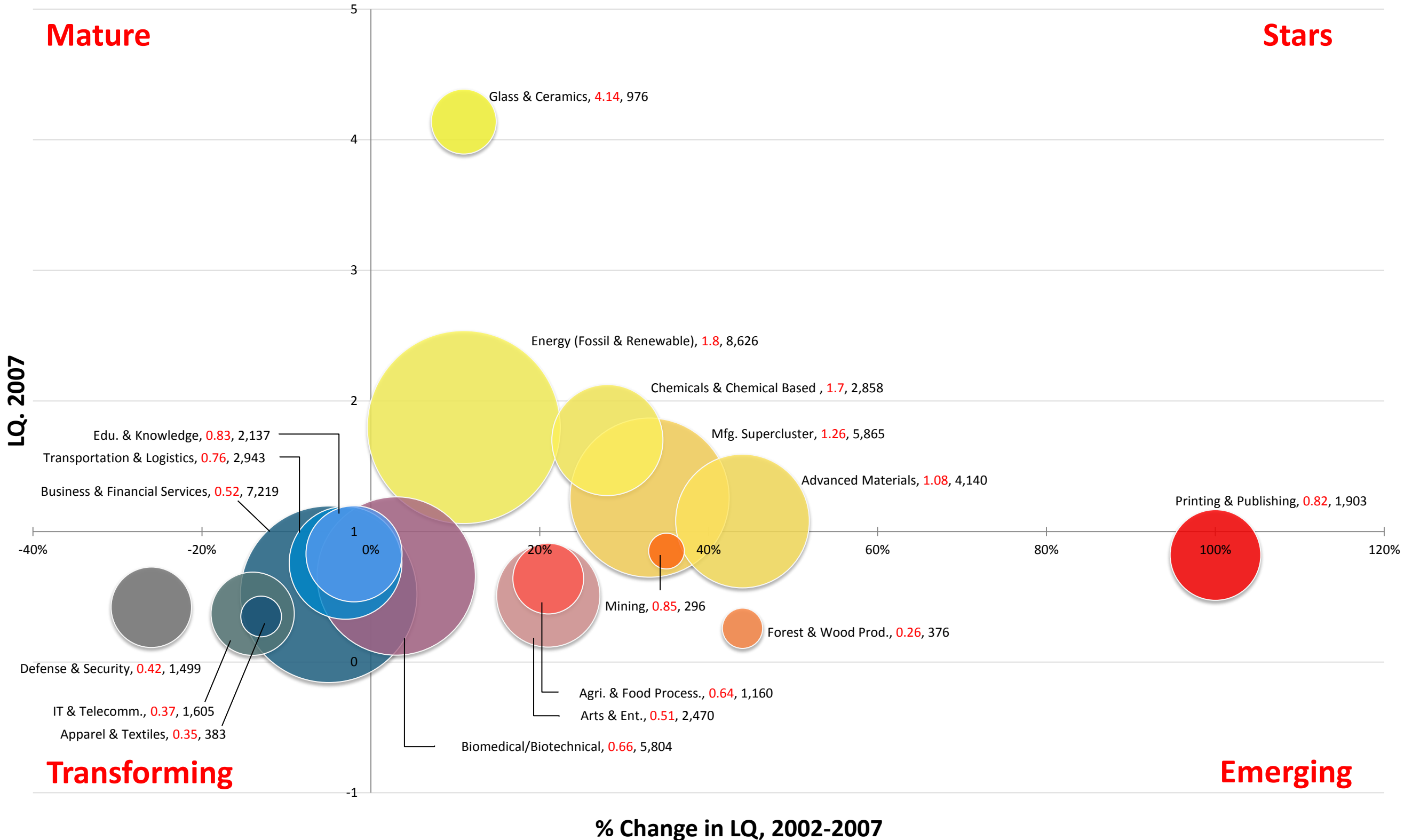
- Transportation & Logistics
- Biomedical/Biotechnical (Life Sciences)
- Education & Knowledge Creation
- Arts, Entertainment, Recreation & Visitor Industries
- Printing & Publishing
- Agribusiness, Food Processing & Technology
- Information Technology & Telecommunications

## Emerging

- Mining
- Business & Financial Services
- Apparel & Textiles
- Defense & Security
- Forest & Wood Products
- Computer & Electronic Product Manufacturing
- Transportation Equipment Manufacturing
- Electrical Equipment, Appliance & Component Manufacturing

# Route 66 Community Partners

## Industry Cluster Analysis, 2002-2007

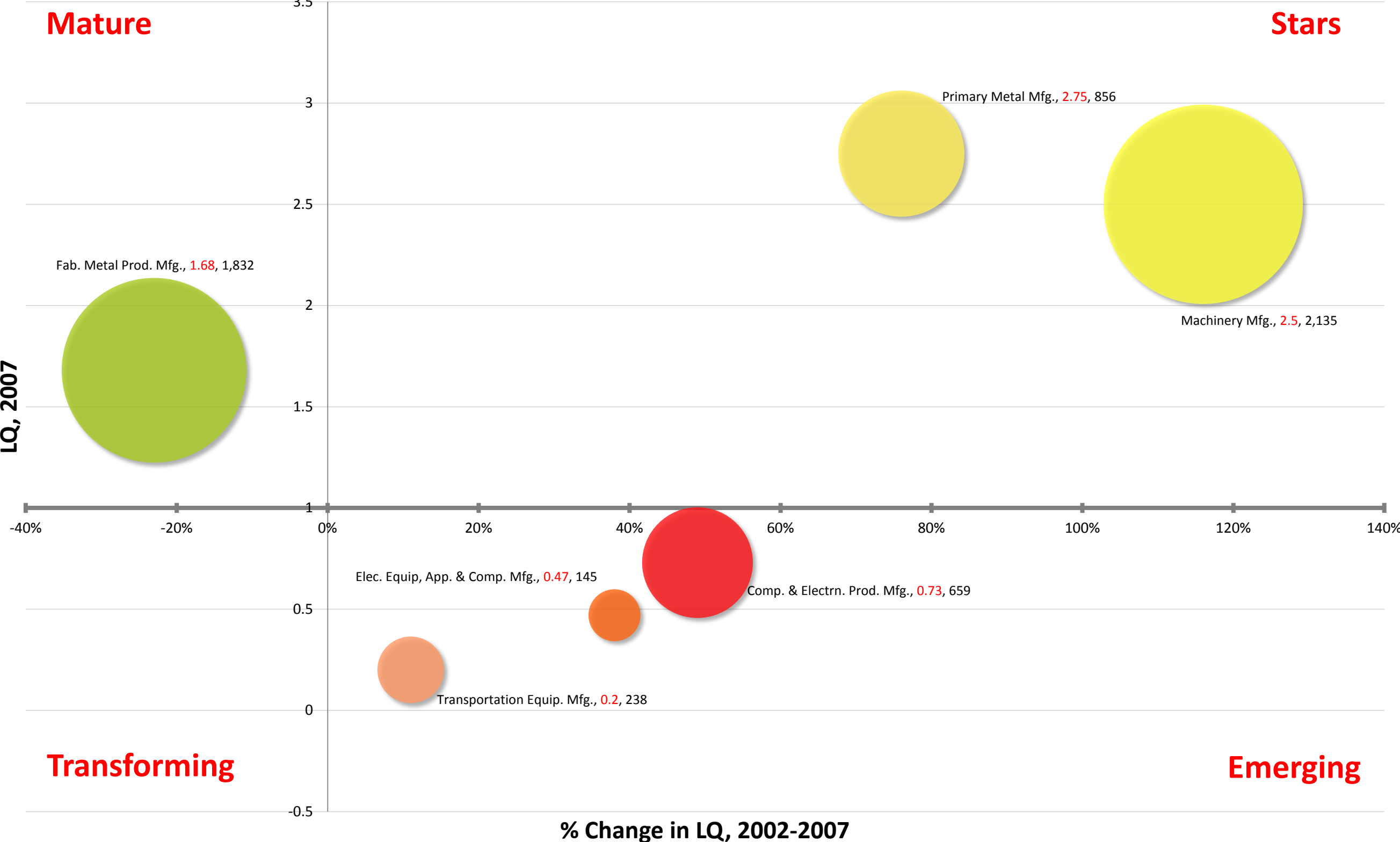


Note: Label includes cluster name, LQ 2007, and Employment 2007

Data Source: EMSI 2012.4, industry cluster definitions by PCRD

# Route 66 Community Partners

## Manufacturing Sub Cluster Analysis, 2002-2007



Note: Label includes cluster name, LQ 2007, and Employment 2007

Data Source: EMSI 2012.4, industry cluster definitions by PCRD



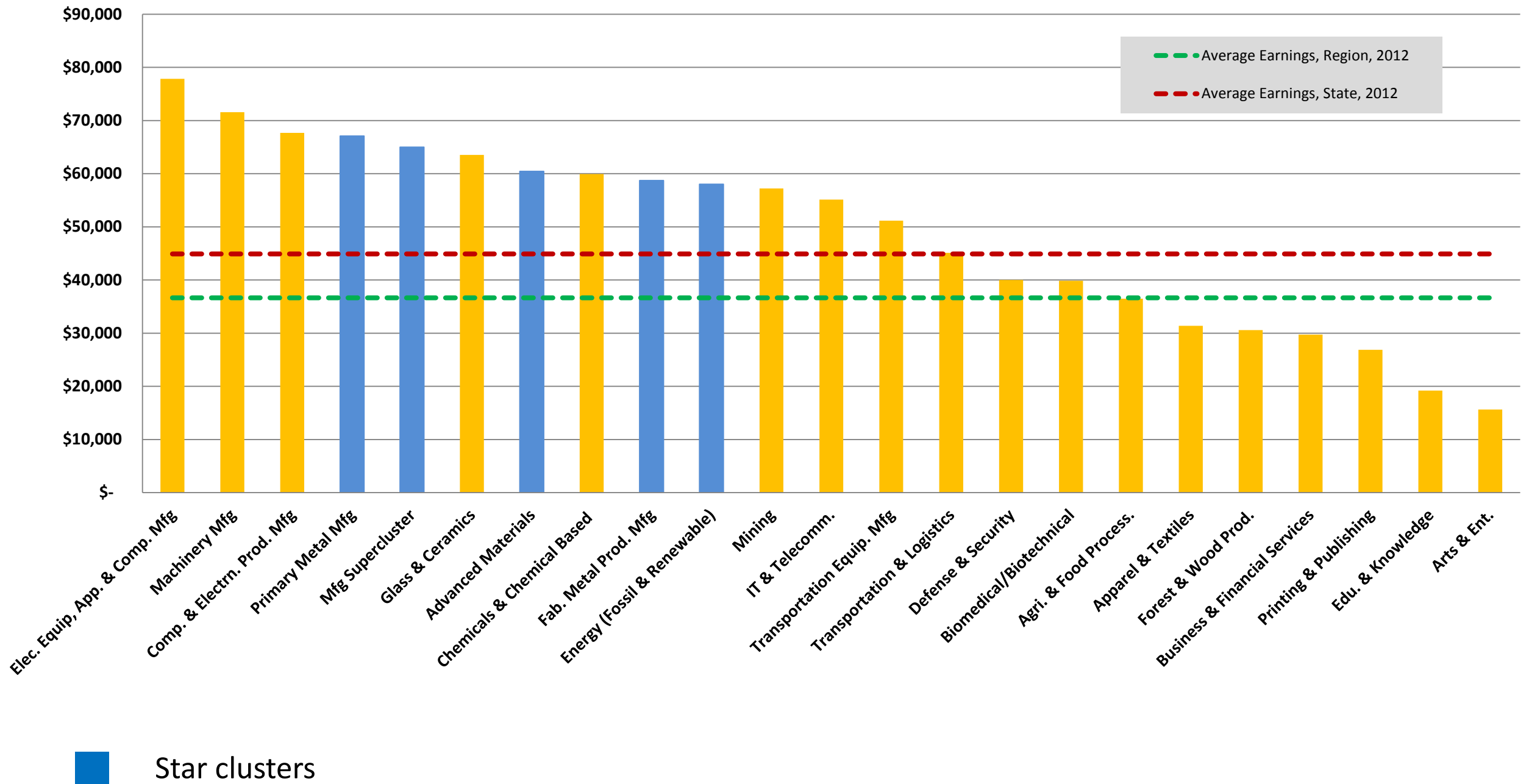
# Industry Cluster Analysis, 2002-2007





# Average Earnings of Industry Clusters, 2012

## Route 66 Community Partners, Average Earnings, 2012

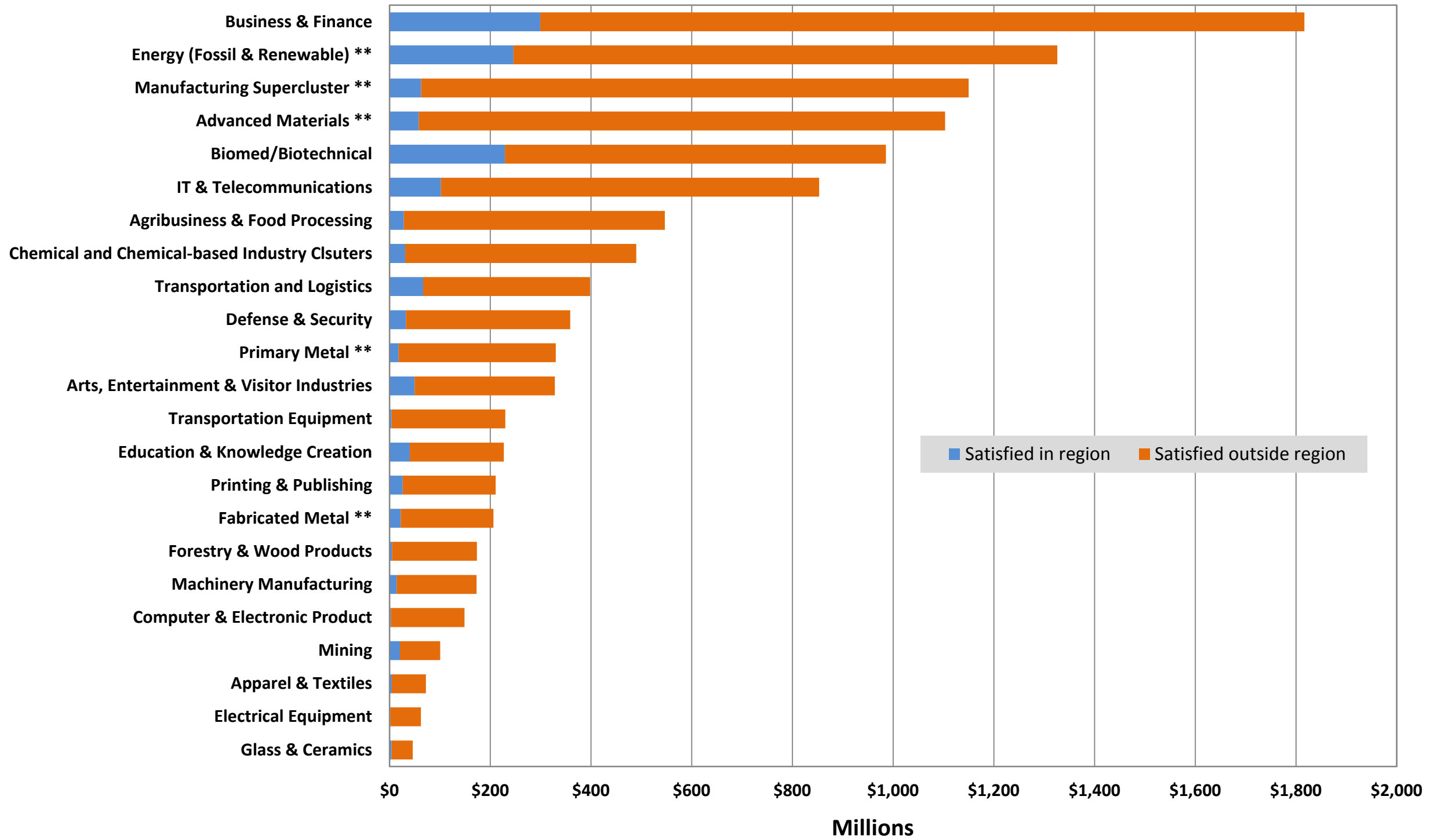


## Route 66 Community Partners, Industry Clusters, 2012

Cluster Name	2012 Jobs	2012 LQ	Percent Change LQ, 2007-2012	2012 EPW	Competitive Effect (shift-share), 2007-2012
Energy (Fossil & Renewable)	12,411	2.38	32%	\$58,019	3,076
Business & Financial Services	8,544	0.55	6%	\$29,712	618
Manufacturing Supercluster	6,014	1.44	14%	\$64,985	809
Biomedical/Biotechnical (Life Sciences)	5,777	0.60	-9%	\$39,842	-543
Advanced Materials	4,263	1.19	10%	\$60,434	439
Transportation & Logistics	2,840	0.76	0%	\$45,120	-5
Chemicals & Chemical Based Products	2,306	1.59	-6%	\$59,946	-147
Arts, Entertainment, Recreation & Visitor Industries	2,206	0.45	-12%	\$15,645	-274
Education & Knowledge Creation	2,097	0.72	-13%	\$19,207	-286
Fabricated Metal Product Manufacturing	2,064	2.10	25%	\$58,734	420
Defense & Security	1,792	0.48	14%	\$39,988	224
Machinery Manufacturing	1,690	2.11	-16%	\$71,575	-295
Information Technology & Telecommunications	1,578	0.36	-3%	\$55,114	-21
Printing & Publishing	1,135	0.53	-35%	\$26,881	-620
Primary Metal Manufacturing	1,109	3.94	43%	\$67,088	341
Agribusiness, Food Processing & Technology	1,049	0.57	-11%	\$36,464	-128
Glass & Ceramics	714	3.60	-13%	\$63,538	-102
Computer & Electronic Product Manufacturing	664	0.85	16%	\$67,671	92
Apparel & Textiles	492	0.53	51%	\$31,374	168
Mining	323	0.92	8%	\$57,219	26
Transportation Equipment Manufacturing	323	0.31	55%	\$51,175	117
Forest & Wood Products	311	0.29	12%	\$30,567	33
Electrical Equipment, Appliance & Component Manufacturing	164	0.61	30%	\$77,851	39

# Route 66 Community Partners, Industry Clusters

## Regional Requirements, Expenditures & Leakages, 2011



Data Source: EMSI 2012.4, industry cluster definitions by PCRD



# PURDUE

---

CENTER FOR  
REGIONAL DEVELOPMENT

Purdue Center for Regional Development  
Purdue University  
Gerald D. and Edna E. Mann Hall, Suite 266  
203 Martin Jischke Drive  
West Lafayette, IN 47907-2057