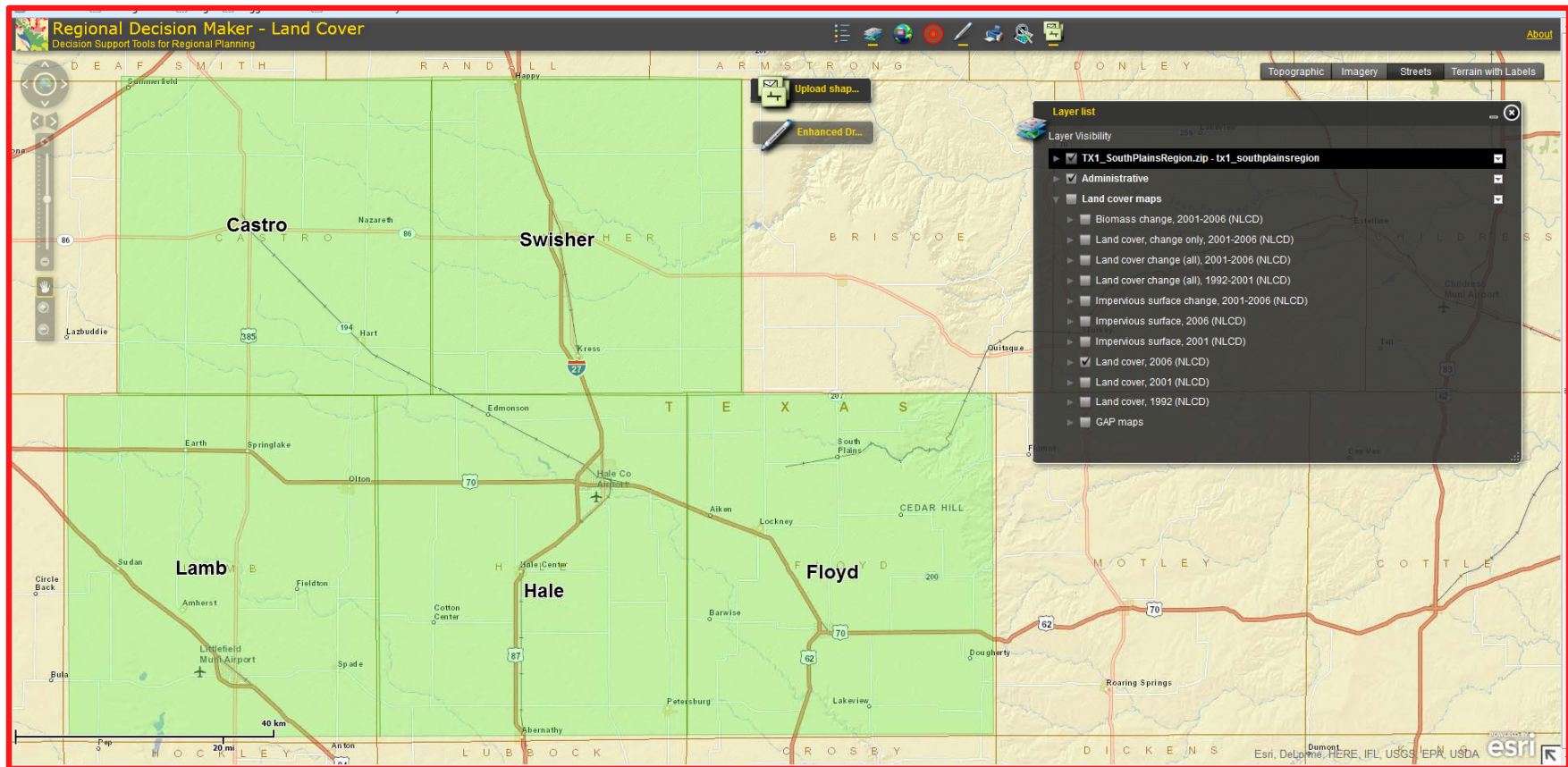


# South Plains Region, TX



The region includes the following counties:

- Castro, Floyd, Hale, Lamb, and Swisher

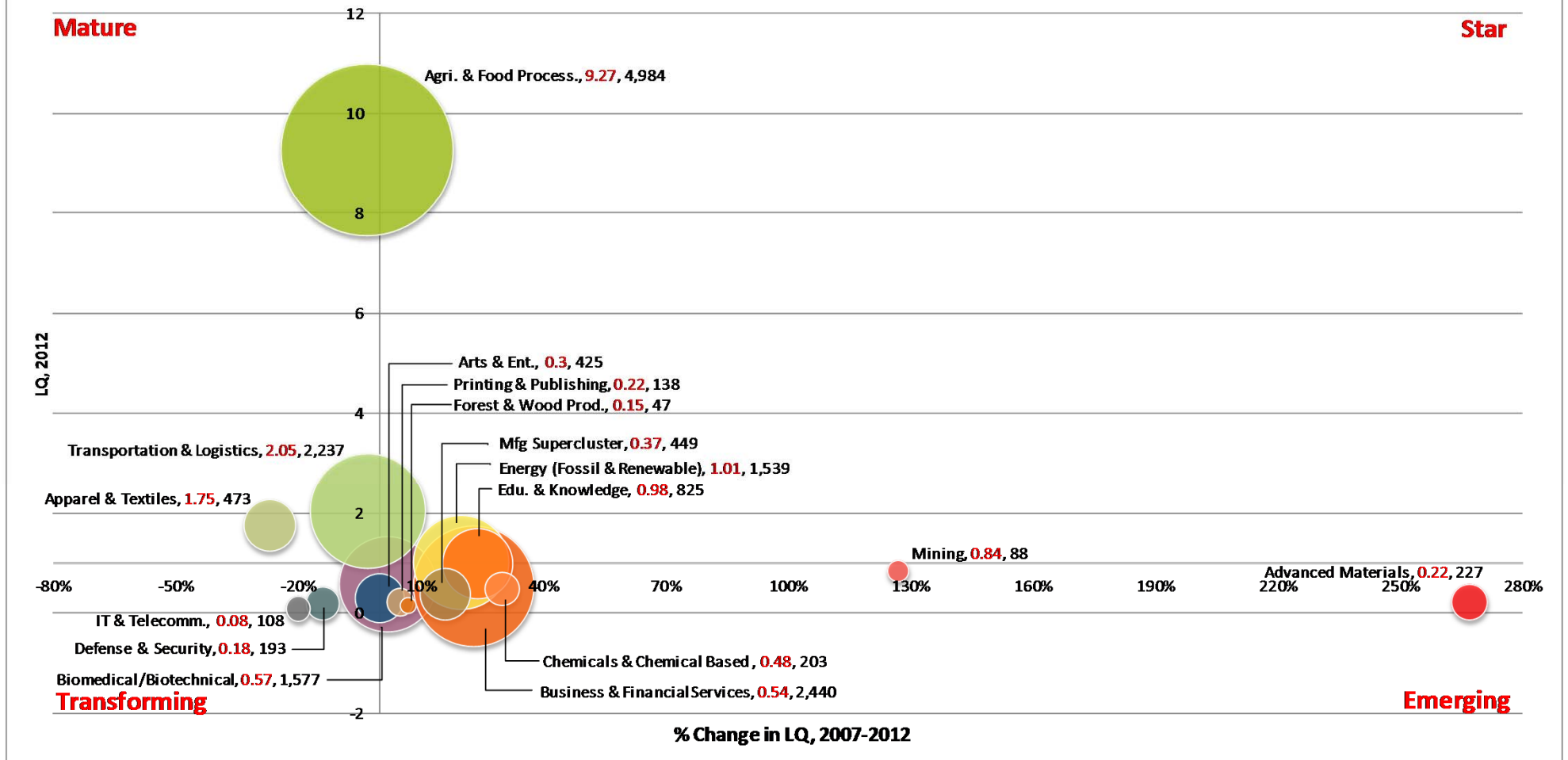


## South Plains Region: Economic Attributes

<b>Economic &amp; Demographic Attributes</b>	<b>Value</b>	<b>Remarks</b>	<b>Source</b>
Population (2012)	72,815	People living in the region	Census
Jobs (2012)	36,797	Full and part-time jobs	EMSI (QCEW, BLS; BEA)
Average Earnings (2012)	\$33,655	Include wages, salaries, supplements and proprietor income	EMSI (BLS; BEA)
Completions (2010)	1,969	Students completing a specific course of study	EMSI (NCES; IPEDS)
GRP, Gross Regional Product (2012)	\$1,939,526,721	Final market value of all goods and services produced in the region	EMSI (BEA; QCEW, BLS)
Exports (2012)	\$3,966,991,475	\$ earned from selling goods and services to foreign and external domestic regions	EMSI model (BEA)
Imports (2012)	\$4,224,584,568	\$ spent on procuring goods and services from foreign and external domestic region	EMSI model (BEA)

# South Plains Region

## Industry Cluster Analysis, 2007-2012

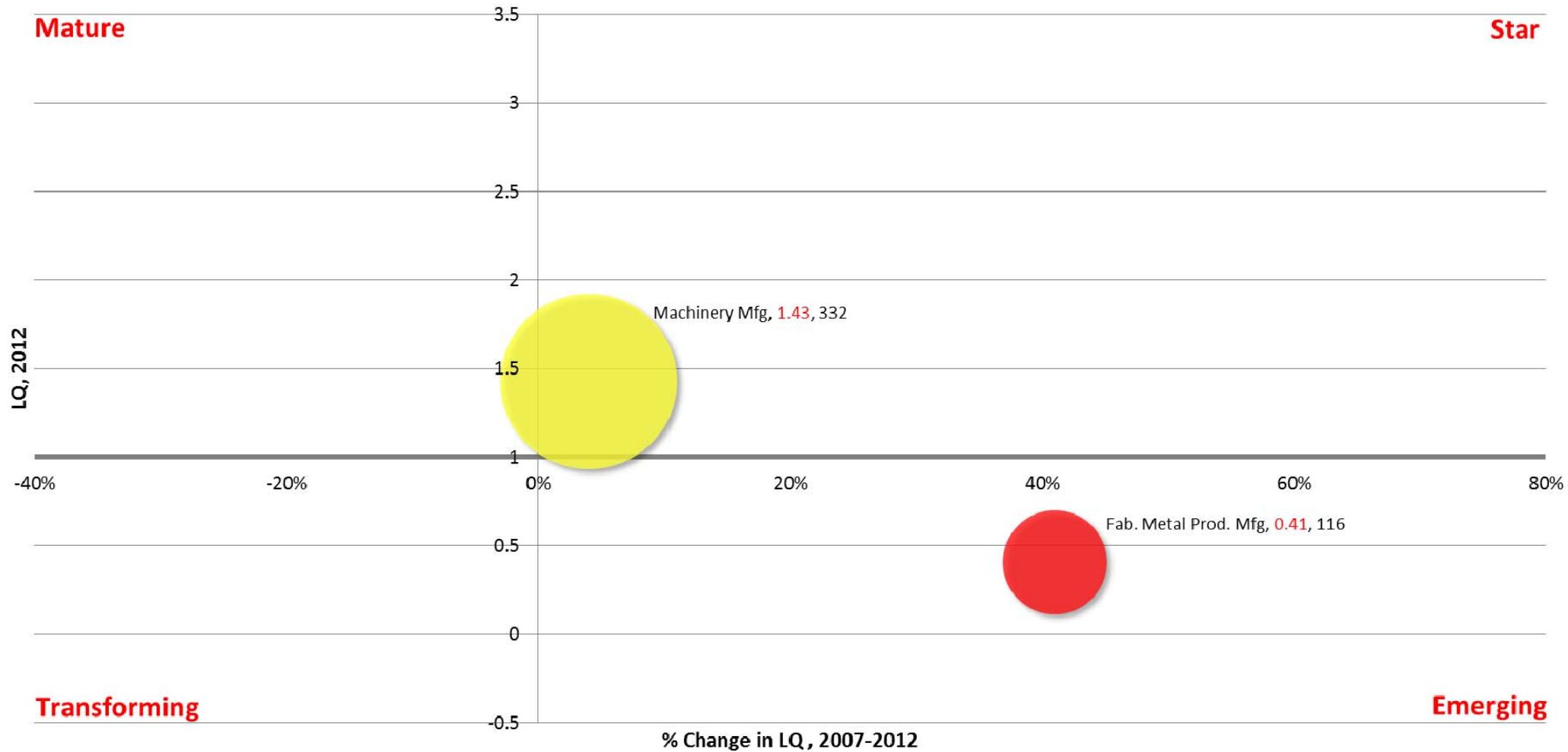


Note: Label includes cluster name, LQ 2012, and Employment 2012

Data Source: EMSI 2013. 2, industry cluster definitions by PCRD

# South Plains Region

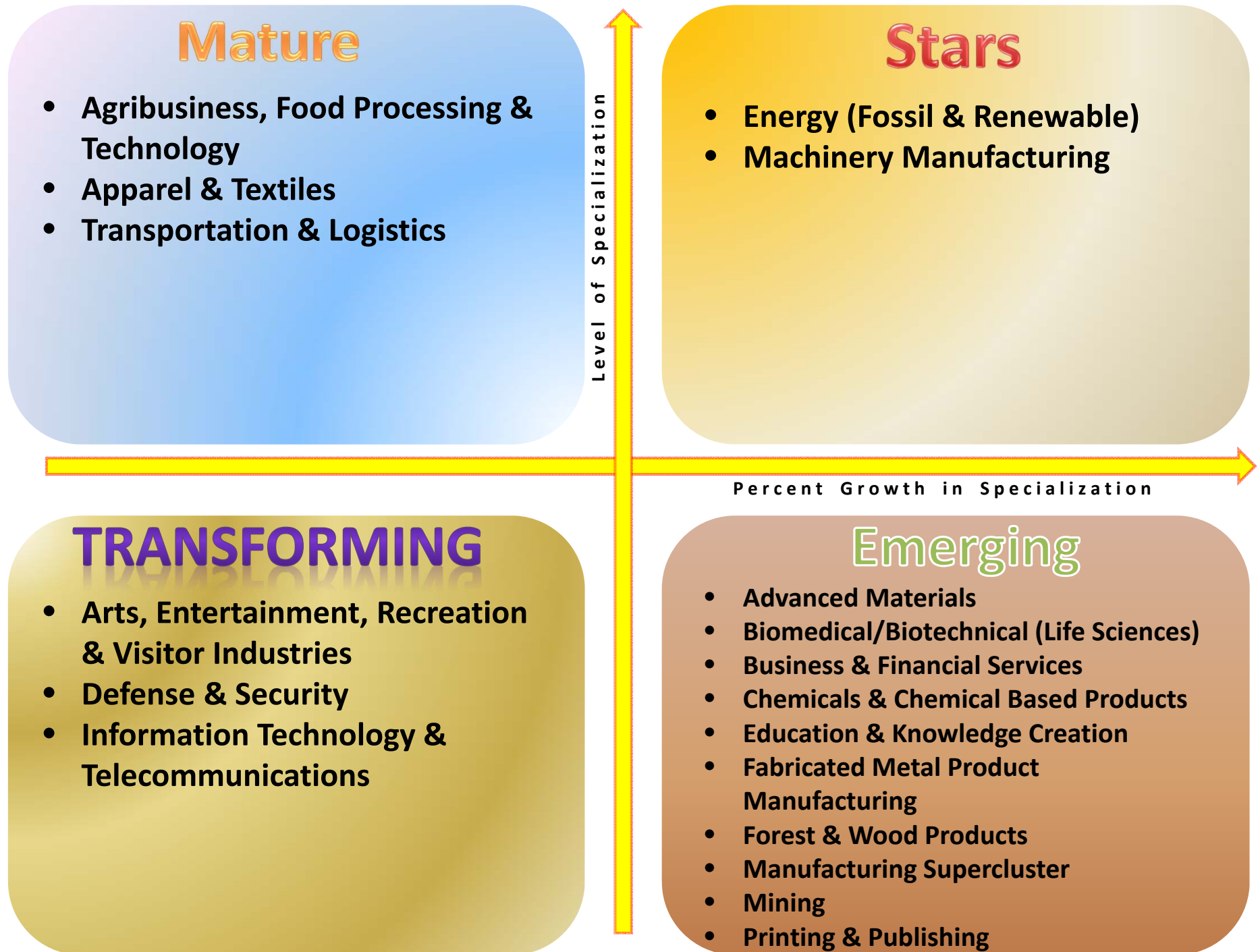
## Manufacturing Sub Cluster Analysis, 2007-2012



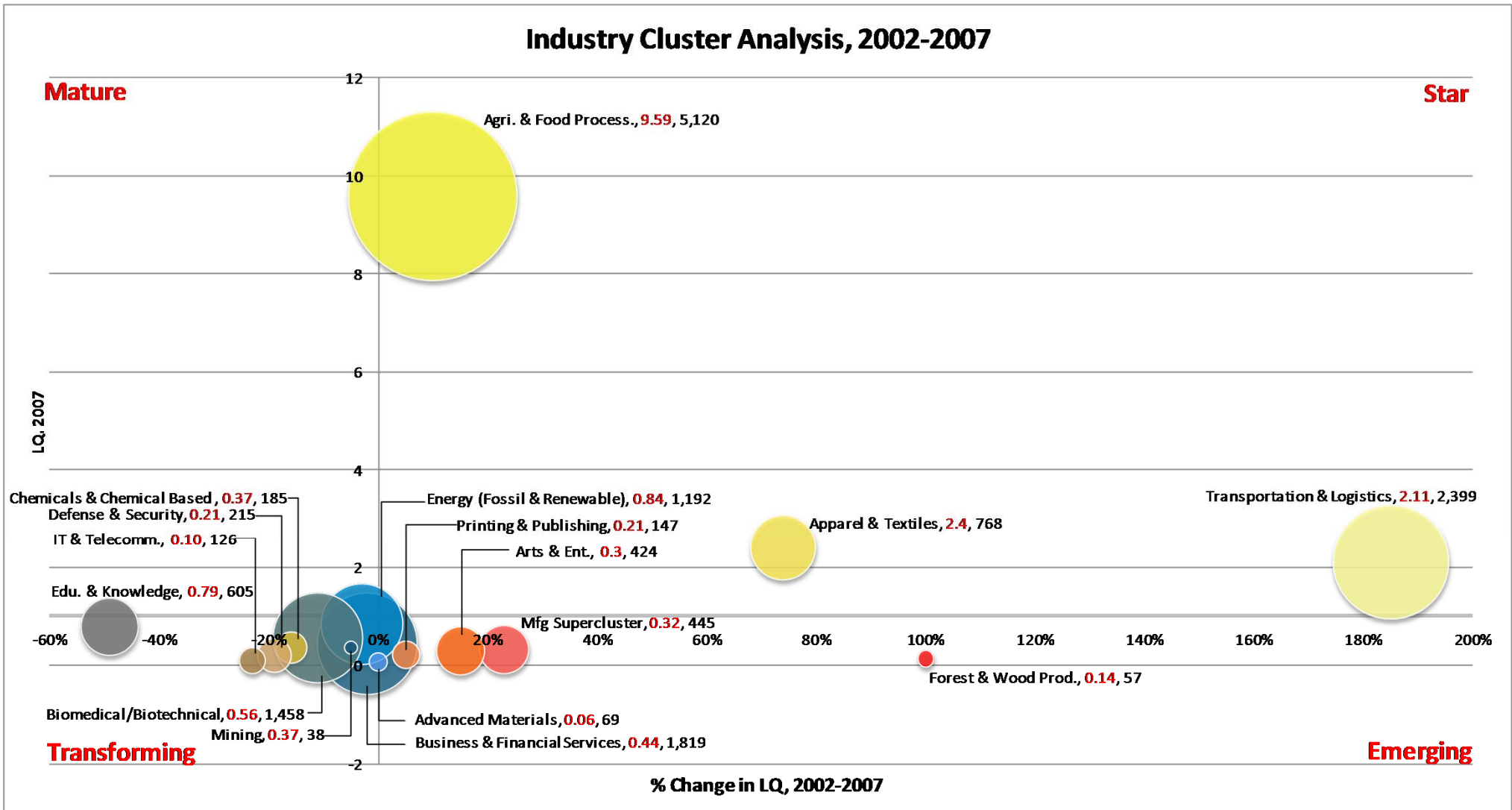
Note: Label includes cluster name, LQ 2012, and Employment 2012

Data Source: EMSI 2013. 2, industry cluster definitions by PCRD

# Industry Cluster Analysis, 2007-2012



# South Plains Region

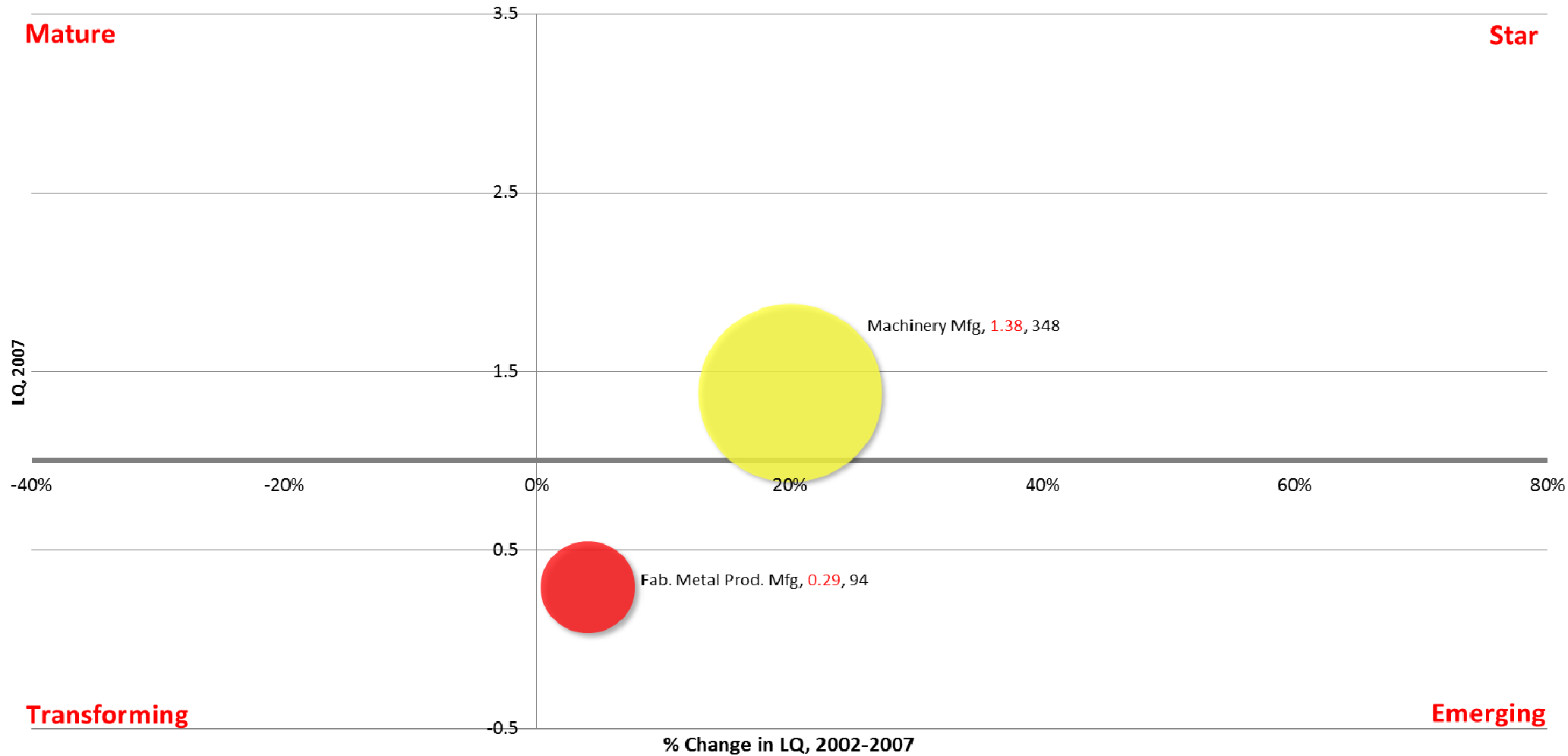


Note: Label includes cluster name, LQ 2007, and Employment 2007

Data Source: EMSI 2013. 2, industry cluster definitions by PCRCD

# South Plains Group

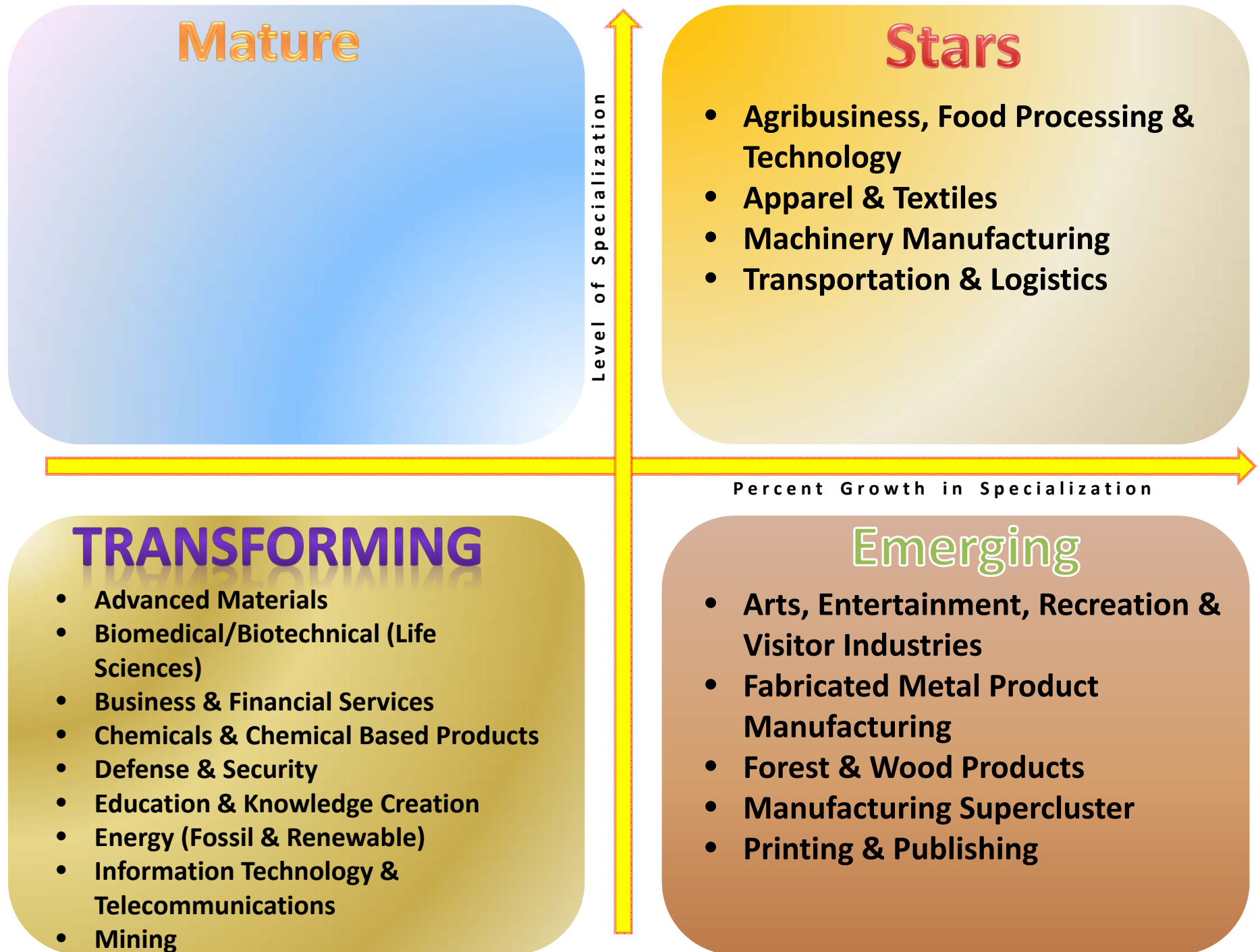
## Manufacturing Sub Cluster Analysis, 2002-2007



Note: Label includes cluster name, LQ 2007, and Employment 2007

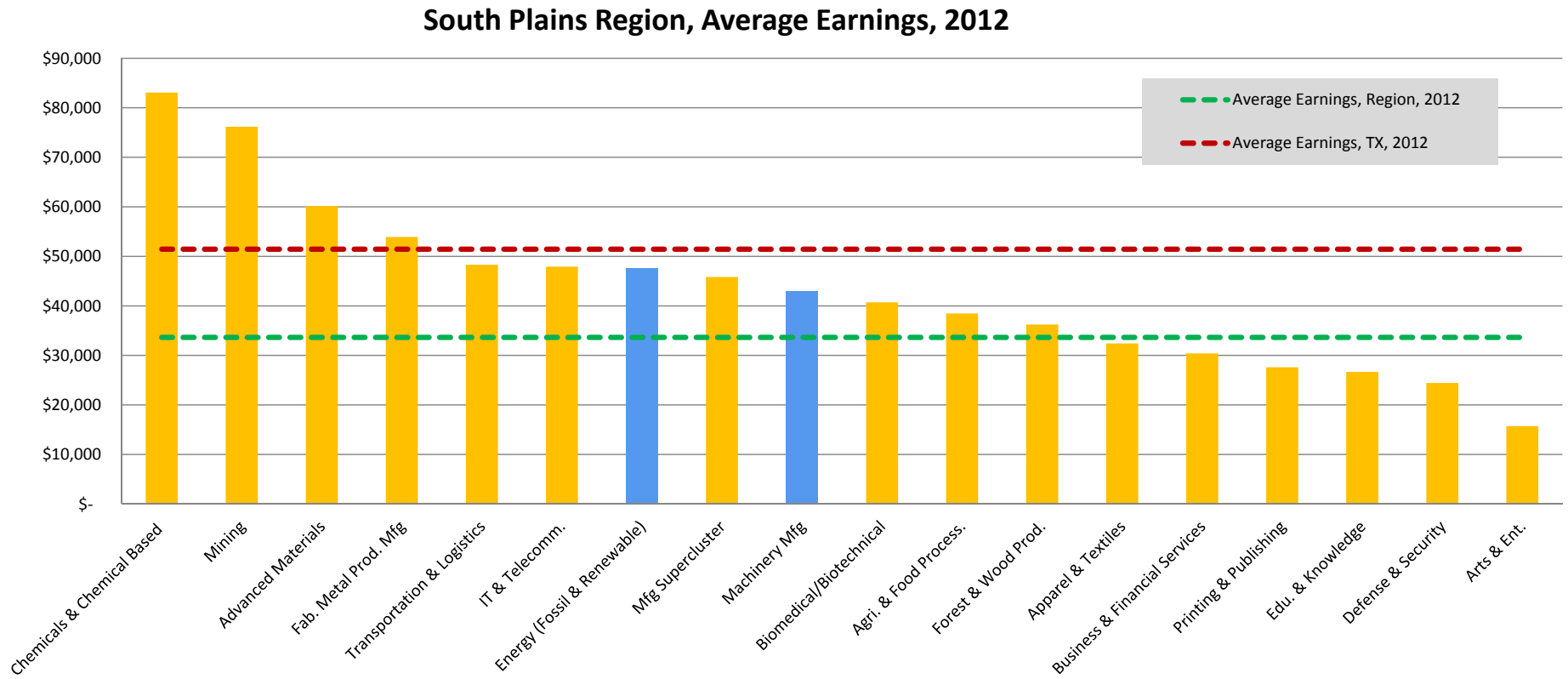
Data Source: EMSI 2013. 2, industry cluster definitions by PCRD

# Industry Cluster Analysis, 2002-2007





# Average Earnings of Industry Clusters, 2012



Data Source: EMSI 2013.2 & 2013.1, industry cluster definitions by PCRD

# South Plains Region, Industry Clusters, 2012

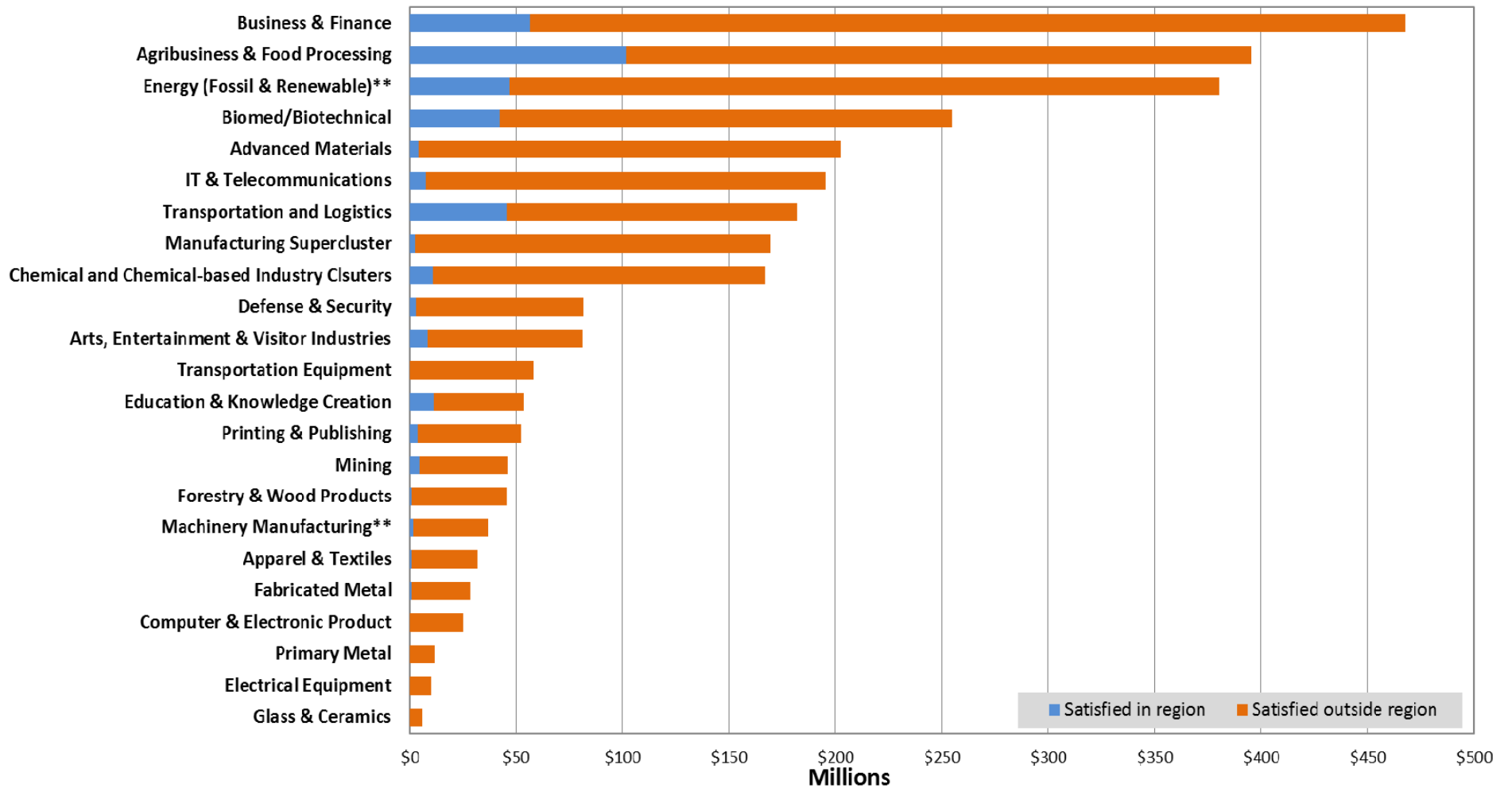
Cluster Name	2012 Jobs	2012 LQ	Percent Change LQ, 2007-2012	2012 EPW	Competitive Effect (shift-share), 2007-2012
Agribusiness, Food Processing & Technology	4,984	9.27	(3%)	\$38,489	-198
Business & Financial Services	2,440	0.54	23%	\$30,416	442
Transportation & Logistics	2,237	2.05	(3%)	\$48,321	-73
Biomedical/Biotechnical (Life Sciences)	1,577	0.57	2%	\$40,734	4
Energy (Fossil & Renewable)	1,539	1.01	20%	\$47,699	247
Education & Knowledge Creation	825	0.98	24%	\$26,675	153
Apparel & Textiles	473	1.75	(27%)	\$32,436	-178
Manufacturing Supercluster	449	0.37	16%	\$45,852	56
Arts, Entertainment, Recreation & Visitor Industries	425	0.3	0%	\$15,747	-4
Machinery Manufacturing	332	1.43	4%	\$43,048	9
Advanced Materials	227	0.22	267%	\$60,168	164
Chemicals & Chemical Based Products	203	0.48	30%	\$83,082	44
Defense & Security	193	0.18	(14%)	\$24,464	-31
Printing & Publishing	138	0.22	5%	\$27,608	2
Fabricated Metal Product Manufacturing	116	0.41	41%	\$53,912	32
Information Technology & Telecommunications	108	0.08	(20%)	\$47,938	-17
Mining	88	0.84	127%	\$76,190	49
Forest & Wood Products	47	0.15	7%	\$36,236	4

Note: Computer & electronic product mfg, Glass & ceramics, Transportation equipment mfg, Electrical equip mfg, and Primary metal mfg do not exist in the region

Data Source: EMSI 2013.2, industry cluster definitions by PCRD

# South Plains Region

## Regional Requirements, Expenditures & Leakage, 2011



Note : \*\* presents "Star clusters".

Data Source: EMSI 2013. 2, industry cluster definitions by PCRCD

# PURDUE

---

CENTER FOR  
REGIONAL DEVELOPMENT

Purdue Center for Regional Development  
Purdue University  
Gerald D. and Edna E. Mann Hall, Suite 266  
203 Martin Jischke Drive  
West Lafayette, IN 47907-2057