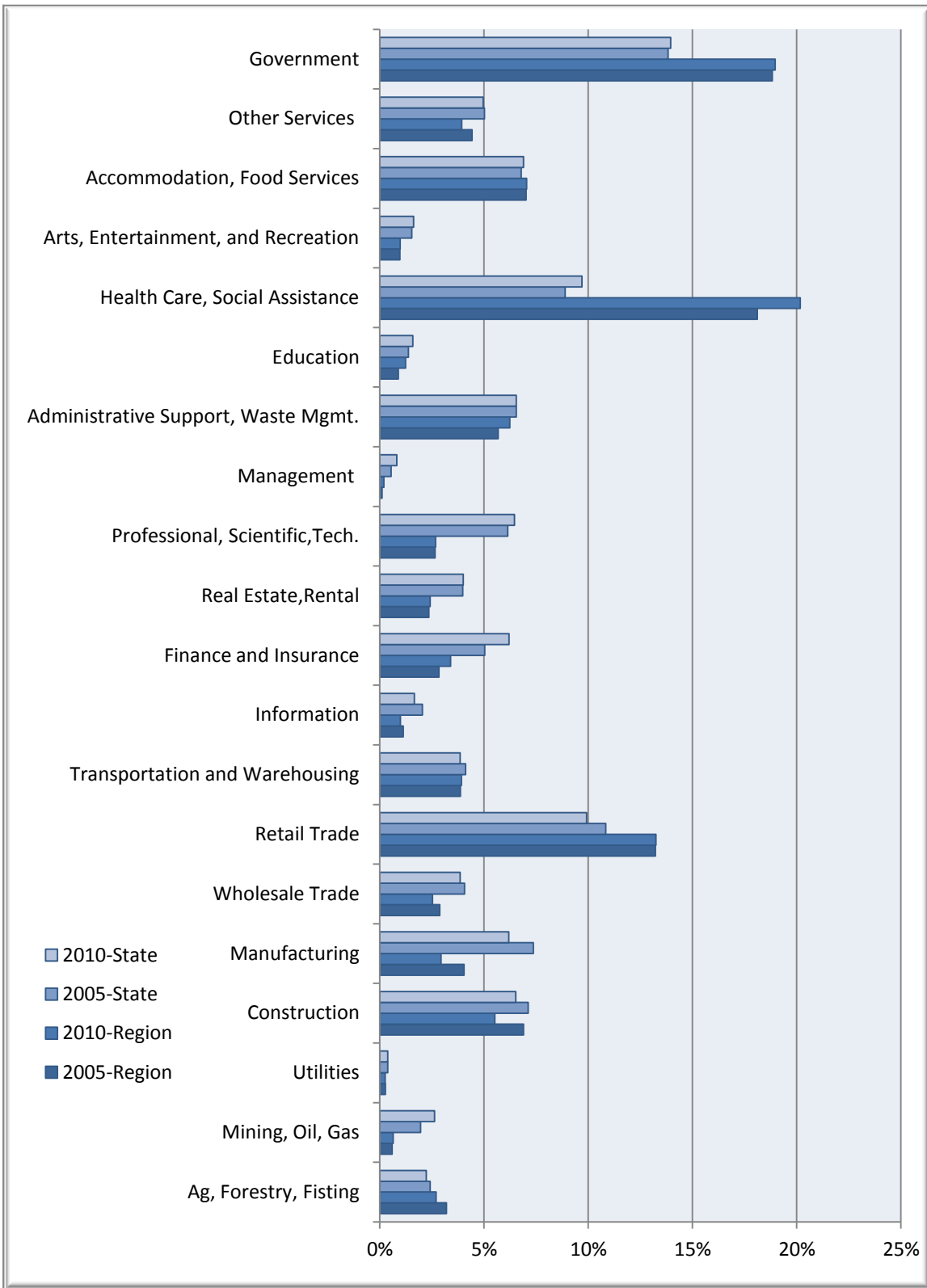


Percent of Jobs by Industry

Lower Rio Grande Region
Texas

Businesses & Industries



Lower Rio Grande Regional Data

Description	2005 Jobs	2010 Jobs	Change	% Change	2011 Wages, Salaries, & Proprietor Earnings	2011 Establishments
Agriculture, Forestry, Fishing and Hunting	13,952	13,240	(712)	(5%)	\$19,161	567
Mining, Quarrying, and Oil and Gas Extraction	2,595	3,182	587	23%	\$60,610	101
Utilities	1,164	1,247	83	7%	\$58,023	52
Construction	30,027	26,991	(3,036)	(10%)	\$27,983	1,128
Manufacturing	17,602	14,368	(3,234)	(18%)	\$36,239	543
Wholesale Trade	12,527	12,371	(156)	(1%)	\$42,685	1,293
Retail Trade	57,535	64,811	7,276	13%	\$21,469	3,099
Transportation and Warehousing	16,850	19,201	2,351	14%	\$31,422	818
Information	4,926	4,834	(92)	(2%)	\$34,503	217
Finance and Insurance	12,340	16,646	4,306	35%	\$36,959	1,070
Real Estate and Rental and Leasing	10,264	11,828	1,564	15%	\$21,580	743
Professional, Scientific, and Technical Services	11,552	13,112	1,560	14%	\$31,038	1,344
Management of Companies and Enterprises	464	987	523	113%	\$39,917	39
Administrative and Support and Waste Management and Remediation Services	24,747	30,505	5,758	23%	\$16,835	693
Educational Services	3,886	6,061	2,175	56%	\$22,503	148
Health Care and Social Assistance	78,841	98,692	19,851	25%	\$26,696	2,943
Arts, Entertainment, and Recreation	4,227	4,773	546	13%	\$12,721	158
Accommodation and Food Services	30,539	34,475	3,936	13%	\$14,641	1,603
Other Services (except Public Administration)	19,285	19,224	(61)	0%	\$20,582	1,336
Government	81,978	92,840	10,862	13%	\$39,173	631
Total	435,301	489,387	54,086	0.12	27,918	18,525

Source: EMSI Complete Employment - 4th Quarter 2010

Texas State Data

Description	2005 Jobs	2010 Jobs	Change	% Change	2011 Wages, Salaries, & Proprietor Earnings	2011 Establishments
Agriculture, Forestry, Fishing and Hunting	310,972	315,897	4,925	2%	\$21,640	9,352
Mining, Quarrying, and Oil and Gas Extraction	251,836	370,970	119,134	47%	\$89,332	8,766
Utilities	49,250	53,639	4,389	9%	\$89,047	1,911
Construction	914,880	921,869	6,989	1%	\$49,651	43,420
Manufacturing	946,669	873,746	(72,923)	(8%)	\$63,548	23,212
Wholesale Trade	522,311	545,356	23,045	4%	\$73,387	42,276
Retail Trade	1,392,758	1,401,399	8,641	1%	\$27,590	71,429
Transportation and Warehousing	529,734	545,408	15,674	3%	\$49,875	17,349
Information	262,959	233,844	(29,115)	(11%)	\$61,784	9,602
Finance and Insurance	646,190	875,257	229,067	35%	\$56,755	35,013
Real Estate and Rental and Leasing	511,059	565,305	54,246	11%	\$29,248	25,273
Professional, Scientific, and Technical Services	788,410	913,078	124,668	16%	\$66,903	70,470
Management of Companies and Enterprises	69,337	115,322	45,985	66%	\$79,657	2,296
Administrative and Support and Waste Management and Remediation Services	841,300	924,362	83,062	10%	\$29,710	30,277
Educational Services	176,685	224,994	48,309	27%	\$31,248	5,448
Health Care and Social Assistance	1,142,109	1,369,881	227,772	20%	\$41,550	56,386
Arts, Entertainment, and Recreation	197,602	230,178	32,576	16%	\$21,337	6,008
Accommodation and Food Services	870,824	974,392	103,568	12%	\$18,179	43,282
Other Services (except Public Administration)	644,991	700,331	55,340	9%	\$28,110	57,122
Government	1,776,569	1,970,943	194,374	11%	\$44,193	15,987
Total	12,846,443	14,126,172	1,279,729	0.1	44,273	57,4878

Source: EMSI Complete Employment - 4th Quarter 2010