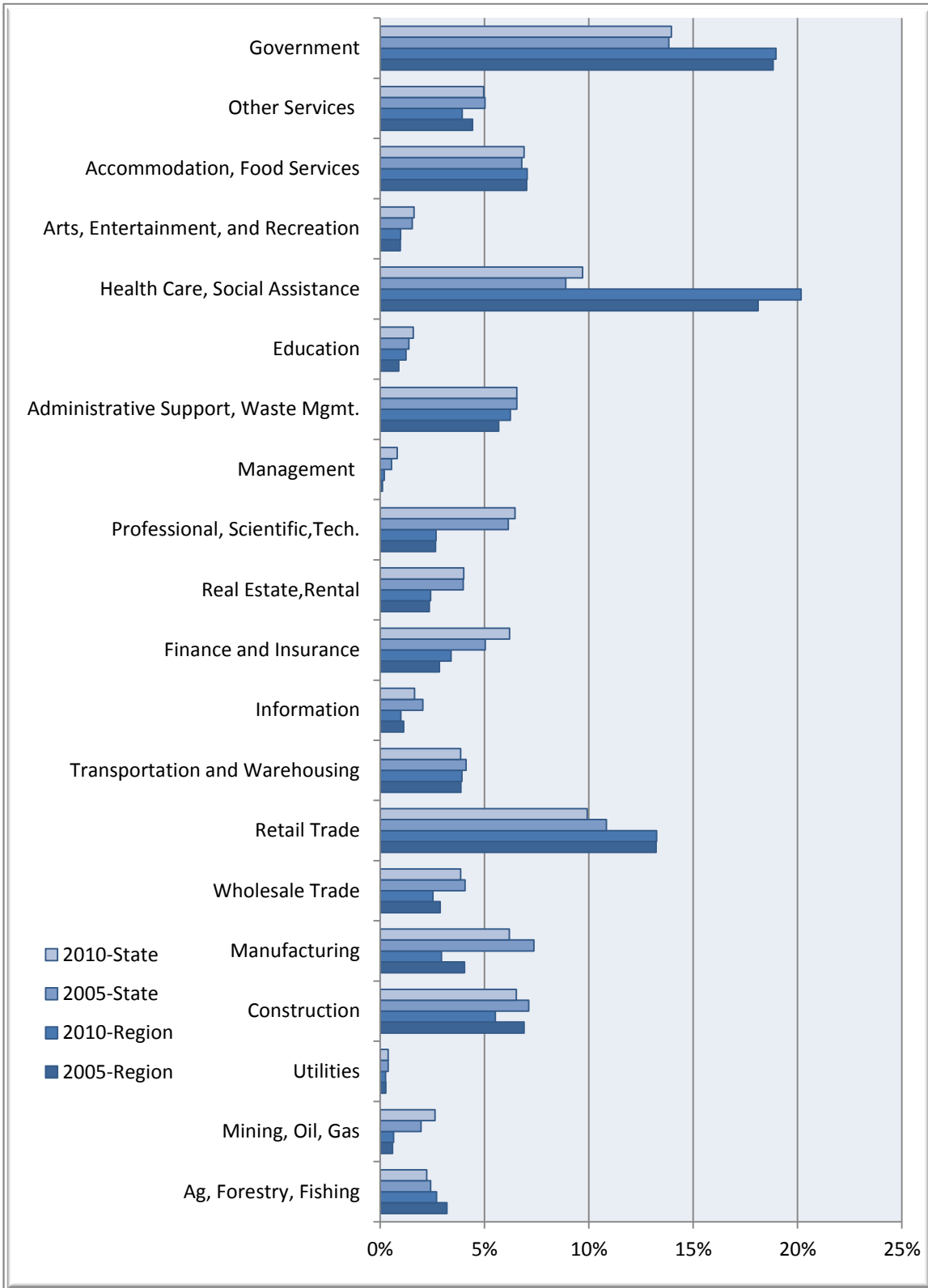


Percent of Jobs by Industry

Lower Rio Grande Region  
Texas

Businesses & Industries



### Lower Rio Grande Regional Data

Description	2005 Jobs	2010 Jobs	Change	% Change	2011 Wages, Salaries, & Proprietor Earnings	2011 Establishments
<b>Agriculture, Forestry, Fishing and Hunting</b>	13,952	13,240	(712)	(5%)	\$19,161	567
<b>Mining, Quarrying, and Oil and Gas Extraction</b>	2,595	3,182	587	23%	\$60,610	101
<b>Utilities</b>	1,164	1,247	83	7%	\$58,023	52
<b>Construction</b>	30,027	26,991	(3,036)	(10%)	\$27,983	1,128
<b>Manufacturing</b>	17,602	14,368	(3,234)	(18%)	\$36,239	543
<b>Wholesale Trade</b>	12,527	12,371	(156)	(1%)	\$42,685	1,293
<b>Retail Trade</b>	57,535	64,811	7,276	13%	\$21,469	3,099
<b>Transportation and Warehousing</b>	16,850	19,201	2,351	14%	\$31,422	818
<b>Information</b>	4,926	4,834	(92)	(2%)	\$34,503	217
<b>Finance and Insurance</b>	12,340	16,646	4,306	35%	\$36,959	1,070
<b>Real Estate and Rental and Leasing</b>	10,264	11,828	1,564	15%	\$21,580	743
<b>Professional, Scientific, and Technical Services</b>	11,552	13,112	1,560	14%	\$31,038	1,344
<b>Management of Companies and Enterprises</b>	464	987	523	113%	\$39,917	39
<b>Administrative and Support and Waste Management and Remediation Services</b>	24,747	30,505	5,758	23%	\$16,835	693
<b>Educational Services</b>	3,886	6,061	2,175	56%	\$22,503	148
<b>Health Care and Social Assistance</b>	78,841	98,692	19,851	25%	\$26,696	2,943
<b>Arts, Entertainment, and Recreation</b>	4,227	4,773	546	13%	\$12,721	158
<b>Accommodation and Food Services</b>	30,539	34,475	3,936	13%	\$14,641	1,603
<b>Other Services (except Public Administration)</b>	19,285	19,224	(61)	0%	\$20,582	1,336
<b>Government</b>	81,978	92,840	10,862	13%	\$39,173	631
<b>Total</b>	<b>435,301</b>	<b>489,387</b>	<b>54,086</b>	<b>0.12</b>	<b>27,918</b>	<b>18,525</b>

Source: EMSI Complete Employment - 4th Quarter 2010

## Texas State Data

Description	2005 Jobs	2010 Jobs	Change	% Change	2011 Wages, Salaries, & Proprietor Earnings	2011 Establishments
<b>Agriculture, Forestry, Fishing and Hunting</b>	310,972	315,897	4,925	2%	\$21,640	9,352
<b>Mining, Quarrying, and Oil and Gas Extraction</b>	251,836	370,970	119,134	47%	\$89,332	8,766
<b>Utilities</b>	49,250	53,639	4,389	9%	\$89,047	1,911
<b>Construction</b>	914,880	921,869	6,989	1%	\$49,651	43,420
<b>Manufacturing</b>	946,669	873,746	(72,923)	(8%)	\$63,548	23,212
<b>Wholesale Trade</b>	522,311	545,356	23,045	4%	\$73,387	42,276
<b>Retail Trade</b>	1,392,758	1,401,399	8,641	1%	\$27,590	71,429
<b>Transportation and Warehousing</b>	529,734	545,408	15,674	3%	\$49,875	17,349
<b>Information</b>	262,959	233,844	(29,115)	(11%)	\$61,784	9,602
<b>Finance and Insurance</b>	646,190	875,257	229,067	35%	\$56,755	35,013
<b>Real Estate and Rental and Leasing</b>	511,059	565,305	54,246	11%	\$29,248	25,273
<b>Professional, Scientific, and Technical Services</b>	788,410	913,078	124,668	16%	\$66,903	70,470
<b>Management of Companies and Enterprises</b>	69,337	115,322	45,985	66%	\$79,657	2,296
<b>Administrative and Support and Waste Management and Remediation Services</b>	841,300	924,362	83,062	10%	\$29,710	30,277
<b>Educational Services</b>	176,685	224,994	48,309	27%	\$31,248	5,448
<b>Health Care and Social Assistance</b>	1,142,109	1,369,881	227,772	20%	\$41,550	56,386
<b>Arts, Entertainment, and Recreation</b>	197,602	230,178	32,576	16%	\$21,337	6,008
<b>Accommodation and Food Services</b>	870,824	974,392	103,568	12%	\$18,179	43,282
<b>Other Services (except Public Administration)</b>	644,991	700,331	55,340	9%	\$28,110	57,122
<b>Government</b>	1,776,569	1,970,943	194,374	11%	\$44,193	15,987
<b>Total</b>	12,846,443	14,126,172	1,279,729	0.1	44,273	57,4878

Source: EMSI Complete Employment - 4th Quarter 2010