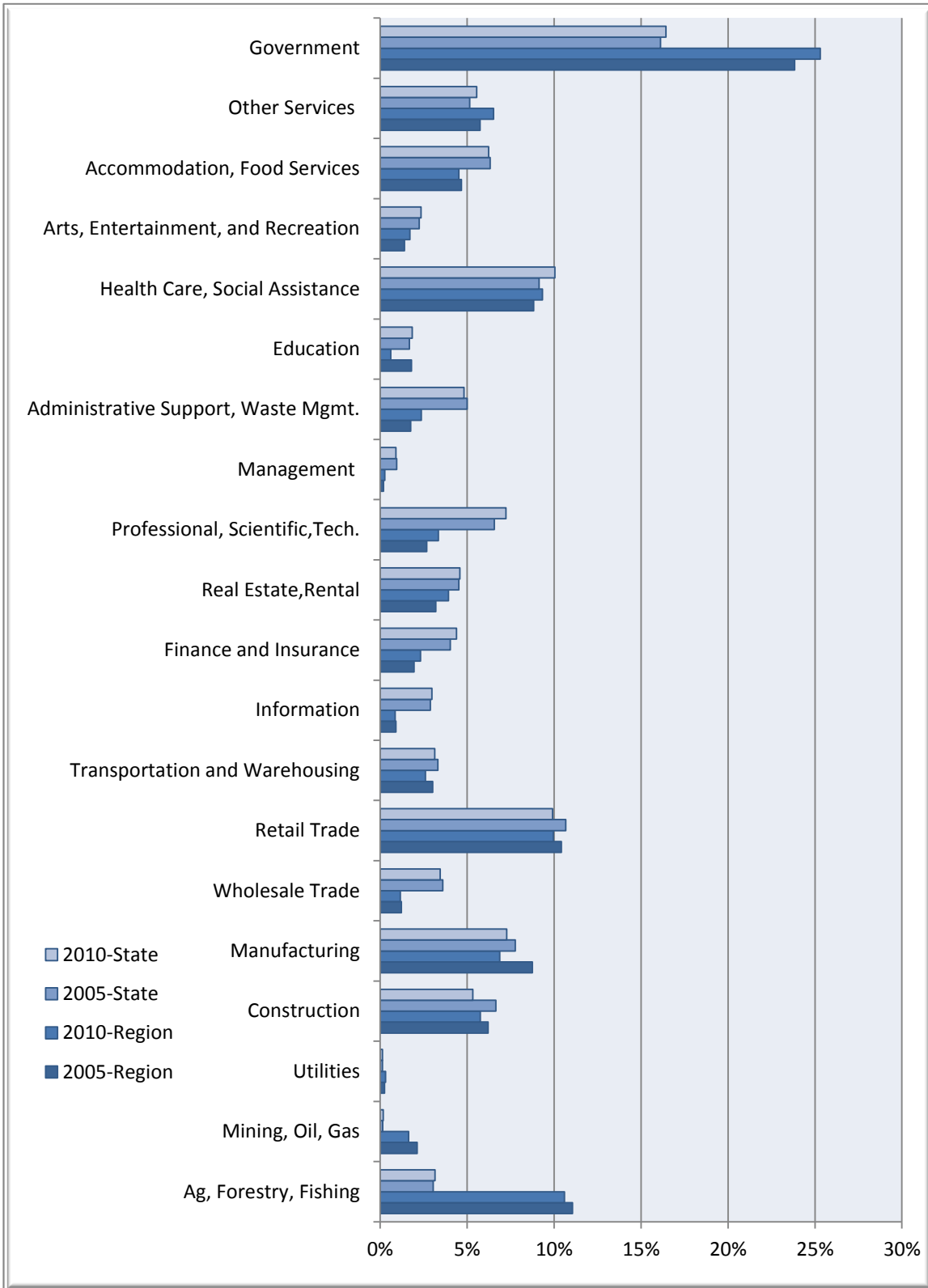


Percent of Jobs by Industry

Tri-County EDD Region  
Washington



Businesses & Industries

### Tri-County EDD Regional Data

Description	2005 Jobs	2010 Jobs	Change	% Change	2011 Wages, Salaries, & Proprietor Earnings	2011 Establishments
<b>Agriculture, Forestry, Fishing and Hunting</b>	2,463	2,341	(122)	(5%)	\$24,683	99
<b>Mining, Quarrying, and Oil and Gas Extraction</b>	473	363	(110)	(23%)	\$42,153	13
<b>Utilities</b>	57	69	12	21%	\$67,406	2
<b>Construction</b>	1,383	1,271	(112)	(8%)	\$32,715	188
<b>Manufacturing</b>	1,948	1,517	(431)	(22%)	\$44,262	46
<b>Wholesale Trade</b>	271	256	(15)	(6%)	\$32,641	36
<b>Retail Trade</b>	2,321	2,200	(121)	(5%)	\$20,741	155
<b>Transportation and Warehousing</b>	673	575	(98)	(15%)	\$36,371	70
<b>Information</b>	201	190	(11)	(5%)	\$25,683	27
<b>Finance and Insurance</b>	435	512	77	18%	\$35,536	41
<b>Real Estate and Rental and Leasing</b>	714	868	154	22%	\$10,274	37
<b>Professional, Scientific, and Technical Services</b>	595	741	146	25%	\$26,316	73
<b>Management of Companies and Enterprises</b>	43	58	15	35%	\$85,103	2
<b>Administrative and Support and Waste Management and Remediation Services</b>	392	521	129	33%	\$18,271	44
<b>Educational Services</b>	400	134	(266)	(67%)	\$7,723	7
<b>Health Care and Social Assistance</b>	1,965	2,060	95	5%	\$33,560	108
<b>Arts, Entertainment, and Recreation</b>	311	377	66	21%	\$8,976	15
<b>Accommodation and Food Services</b>	1,040	1,000	(40)	(4%)	\$13,380	132
<b>Other Services (except Public Administration)</b>	1,279	1,441	162	13%	\$14,687	801
<b>Government</b>	5,307	5,588	281	5%	\$39,272	164
<b>Total</b>	<b>22,270</b>	<b>22,079</b>	<b>-191</b>	<b>-0.01</b>	<b>29,689</b>	<b>2,060</b>

Source: EMSI Complete Employment - 4th Quarter 2010

## Washington State Data

Description	2005 Jobs	2010 Jobs	Change	% Change	2011 Wages, Salaries, & Proprietor Earnings	2011 Establishments
<b>Agriculture, Forestry, Fishing and Hunting</b>	111,039	119,071	8,032	7%	\$31,834	7,390
<b>Mining, Quarrying, and Oil and Gas Extraction</b>	5,605	6,723	1,118	20%	\$35,612	183
<b>Utilities</b>	4,800	5,252	452	9%	\$71,915	304
<b>Construction</b>	241,939	200,650	(41,289)	(17%)	\$53,126	21,982
<b>Manufacturing</b>	282,286	274,242	(8,044)	(3%)	\$64,230	7,242
<b>Wholesale Trade</b>	131,226	130,190	(1,036)	(1%)	\$65,265	14,157
<b>Retail Trade</b>	388,268	373,729	(14,539)	(4%)	\$29,078	19,828
<b>Transportation and Warehousing</b>	120,882	118,650	(2,232)	(2%)	\$48,903	4,932
<b>Information</b>	104,942	112,395	7,453	7%	\$104,166	3,261
<b>Finance and Insurance</b>	146,543	165,578	19,035	13%	\$60,651	8,965
<b>Real Estate and Rental and Leasing</b>	164,552	172,779	8,227	5%	\$23,337	7,915
<b>Professional, Scientific, and Technical Services</b>	238,872	272,900	34,028	14%	\$61,473	19,418
<b>Management of Companies and Enterprises</b>	34,611	34,235	(376)	(1%)	\$93,826	668
<b>Administrative and Support and Waste Management and Remediation Services</b>	182,053	181,877	(176)	0%	\$34,696	10,076
<b>Educational Services</b>	60,893	69,812	8,919	15%	\$28,503	2,529
<b>Health Care and Social Assistance</b>	332,202	378,912	46,710	14%	\$45,476	16,644
<b>Arts, Entertainment, and Recreation</b>	81,904	88,793	6,889	8%	\$18,304	2,585
<b>Accommodation and Food Services</b>	230,226	235,001	4,775	2%	\$18,899	15,620
<b>Other Services (except Public Administration)</b>	187,053	209,122	22,069	12%	\$25,550	66,929
<b>Government</b>	586,260	619,476	33,216	6%	\$49,941	4,251
<b>Total</b>	<b>3,636,155</b>	<b>3,769,384</b>	<b>133,229</b>	<b>0.04</b>	<b>45,521</b>	<b>234,878</b>

Source: EMSI Complete Employment - 4th Quarter 2010