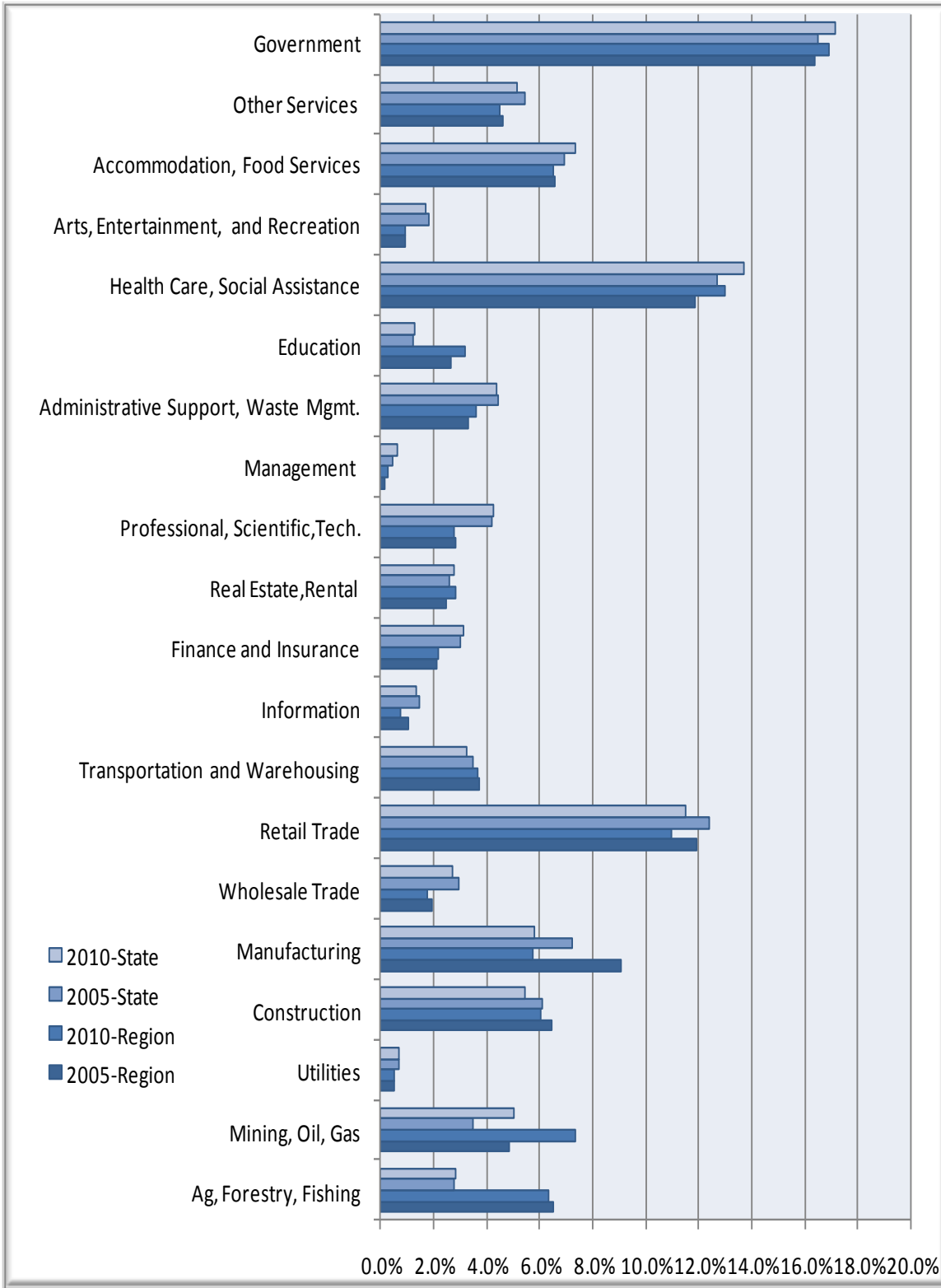


Percent of Jobs by Industry

Hardwood Alliance Region
West Virginia

Businesses & Industries



Hardwood Alliance Regional Data

Industry Type	2005 Jobs	2010 Jobs	Change	% Change	2010 Total Earnings per Worker	2010 Establishments
Agriculture, Forestry, Fishing and Hunting	3,776	3,708	(68)	(2%)	\$23,786	101
Mining, Quarrying, and Oil and Gas Extraction	2,796	4,298	1,502	54%	\$64,914	106
Utilities	301	312	11	4%	\$78,100	23
Construction	3,712	3,530	(182)	(5%)	\$39,215	438
Manufacturing	5,251	3,355	(1,896)	(36%)	\$44,848	130
Wholesale Trade	1,114	1,038	(76)	(7%)	\$46,298	133
Retail Trade	6,897	6,414	(483)	(7%)	\$25,089	484
Transportation and Warehousing	2,157	2,145	(12)	(1%)	\$51,464	242
Information	593	454	(139)	(23%)	\$37,228	42
Finance and Insurance	1,209	1,276	67	6%	\$37,499	119
Real Estate and Rental and Leasing	1,418	1,638	220	16%	\$15,059	105
Professional, Scientific, and Technical Services	1,645	1,616	(29)	(2%)	\$37,456	181
Management of Companies and Enterprises	87	178	91	105%	\$77,131	15
Administrative and Support and Waste Management and Remediation Services	1,898	2,106	208	11%	\$17,009	98
Educational Services	1,550	1,876	326	21%	\$30,253	17
Health Care and Social Assistance	6,862	7,575	713	10%	\$34,183	333
Arts, Entertainment, and Recreation	542	540	(2)	0%	\$15,141	48
Accommodation and Food Services	3,796	3,807	11	0%	\$14,933	253
Other Services (except Public Administration)	2,667	2,640	(27)	(1%)	\$23,567	247
Government	9,465	9,868	403	4%	\$49,119	327
Total	57,736	58,373	637	1%	\$36,437	3,441

Source: EMSI Complete Employment - 4th Quarter 2010

West Virginia State Data

Industry Type	2005 Jobs	2010 Jobs	Change	% Change	2010 Total Earnings per Worker	2010 Establishments
Agriculture, Forestry, Fishing and Hunting	24,650	25,348	698	3%	\$22,328	452
Mining, Quarrying, and Oil and Gas Extraction	30,851	45,473	14,622	47%	\$74,895	927
Utilities	6,262	6,331	69	1%	\$103,793	230
Construction	54,297	49,299	(4,998)	(9%)	\$48,131	5,085
Manufacturing	64,300	52,415	(11,885)	(18%)	\$62,364	1,410
Wholesale Trade	26,243	24,450	(1,793)	(7%)	\$57,302	2,793
Retail Trade	109,820	103,750	(6,070)	(6%)	\$26,298	6,891
Transportation and Warehousing	30,963	29,099	(1,864)	(6%)	\$56,144	2,184
Information	13,260	11,962	(1,298)	(10%)	\$48,653	662
Finance and Insurance	26,422	28,149	1,727	7%	\$44,990	2,376
Real Estate and Rental and Leasing	22,811	24,864	2,053	9%	\$21,368	1,633
Professional, Scientific, and Technical Services	36,952	38,179	1,227	3%	\$52,875	3,940
Management of Companies and Enterprises	3,879	5,626	1,747	45%	\$72,669	310
Administrative and Support and Waste Management and Remediation Services	39,237	39,504	267	1%	\$25,732	2,301
Educational Services	11,049	11,889	840	8%	\$26,320	284
Health Care and Social Assistance	112,671	123,640	10,969	10%	\$45,150	4,860
Arts, Entertainment, and Recreation	16,202	15,174	(1,028)	(6%)	\$19,323	925
Accommodation and Food Services	61,562	66,260	4,698	8%	\$17,045	3,556
Other Services (except Public Administration)	48,134	46,348	(1,786)	(4%)	\$23,769	4,319
Government	146,309	154,800	8,491	6%	\$55,988	3,255
Total	885,874	902,559	16,685	2%	\$43,148	48,394

Source: EMSI Complete Employment - 4th Quarter 2010