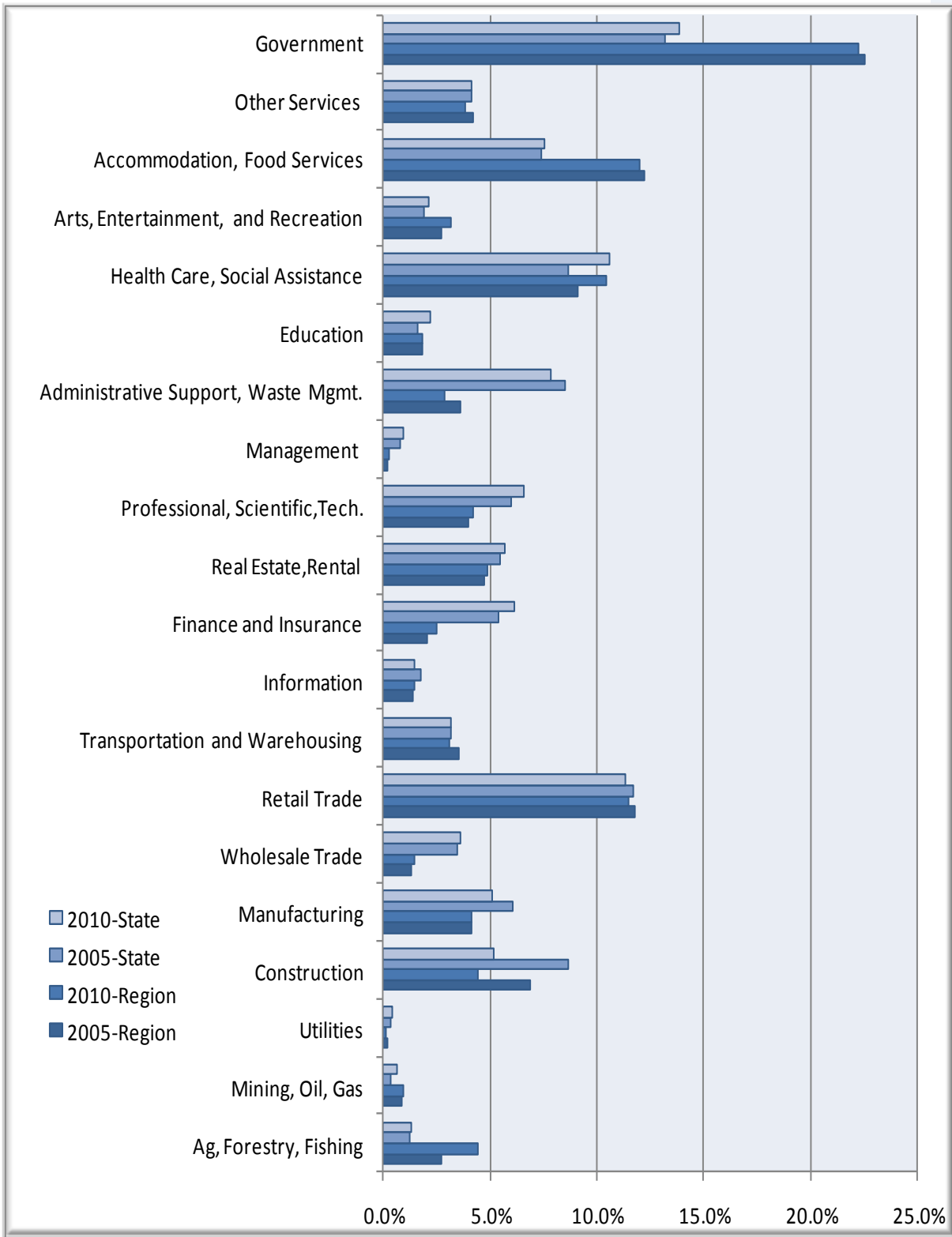


Percent of Jobs by Industry

Northern Arizona
Region

Businesses & Industries



Northern Arizona Regional Data

Industry Type	2005 Jobs	2010 Jobs	Change	% Change	2010 Total Earnings per Worker	2010 Establishments
Agriculture, Forestry, Fishing and Hunting	3,168	5,318	2,150	68%	\$23,262	36
Mining, Quarrying, and Oil and Gas Extraction	1,032	1,173	141	14%	\$47,450	21
Utilities	191	191	0	0%	\$56,671	25
Construction	8,037	5,310	(2,727)	(34%)	\$43,754	819
Manufacturing	4,850	5,003	153	3%	\$65,147	144
Wholesale Trade	1,559	1,728	169	11%	\$47,093	174
Retail Trade	13,811	13,754	(57)	0%	\$26,095	792
Transportation and Warehousing	4,105	3,709	(396)	(10%)	\$55,737	174
Information	1,638	1,795	157	10%	\$56,905	74
Finance and Insurance	2,422	3,046	624	26%	\$53,667	208
Real Estate and Rental and Leasing	5,528	5,857	329	6%	\$20,879	281
Professional, Scientific, and Technical Services	4,657	5,052	395	8%	\$35,225	470
Management of Companies and Enterprises	259	342	83	32%	\$65,898	17
Administrative and Support and Waste Management and Remediation Services	4,214	3,481	(733)	(17%)	\$23,927	265
Educational Services	2,147	2,229	82	4%	\$22,535	60
Health Care and Social Assistance	10,697	12,509	1,812	17%	\$52,805	565
Arts, Entertainment, and Recreation	3,204	3,783	579	18%	\$17,451	104
Accommodation and Food Services	14,316	14,430	114	1%	\$20,372	634
Other Services (except Public Administration)	4,893	4,581	(312)	(6%)	\$24,892	400
Government	26,383	26,702	319	1%	\$56,841	298
Total	117,113	119,993	2,880	2%	\$39,750	5,563

Source: EMSI Complete Employment - 4th Quarter 2010

Arizona State Data

Industry Type	2005 Jobs	2010 Jobs	Change	% Change	2010 Total Earnings per Worker	2010 Establishments
Agriculture, Forestry, Fishing and Hunting	40,492	41,794	1,302	3%	\$31,017	1,091
Mining, Quarrying, and Oil and Gas Extraction	11,922	20,266	8,344	70%	\$68,797	219
Utilities	12,143	12,874	731	6%	\$110,609	283
Construction	274,329	162,837	(111,492)	(41%)	\$53,141	15,595
Manufacturing	192,528	160,579	(31,949)	(17%)	\$74,872	5,020
Wholesale Trade	111,132	114,578	3,446	3%	\$70,928	14,561
Retail Trade	371,088	356,080	(15,008)	(4%)	\$32,085	16,398
Transportation and Warehousing	101,316	98,872	(2,444)	(2%)	\$53,870	3,545
Information	55,137	45,557	(9,580)	(17%)	\$59,741	2,233
Finance and Insurance	171,458	193,915	22,457	13%	\$58,067	8,929
Real Estate and Rental and Leasing	174,967	178,384	3,417	2%	\$28,249	7,892
Professional, Scientific, and Technical Services	190,768	207,560	16,792	9%	\$61,402	20,316
Management of Companies and Enterprises	25,853	28,789	2,936	11%	\$81,391	809
Administrative and Support and Waste Management and Remediation Services	270,361	246,470	(23,891)	(9%)	\$33,265	9,730
Educational Services	52,113	70,466	18,353	35%	\$36,666	1,961
Health Care and Social Assistance	274,114	331,923	57,809	21%	\$54,896	13,897
Arts, Entertainment, and Recreation	60,086	66,765	6,679	11%	\$26,196	1,777
Accommodation and Food Services	234,442	238,136	3,694	2%	\$21,281	9,987
Other Services (except Public Administration)	131,871	129,923	(1,948)	(1%)	\$31,532	11,813
Government	419,876	436,685	16,809	4%	\$63,008	2,373
Total	3,175,995	3,142,452	(33,543)	(1%)	\$48,118	148,430

Source: EMSI Complete Employment - 4th Quarter 2010