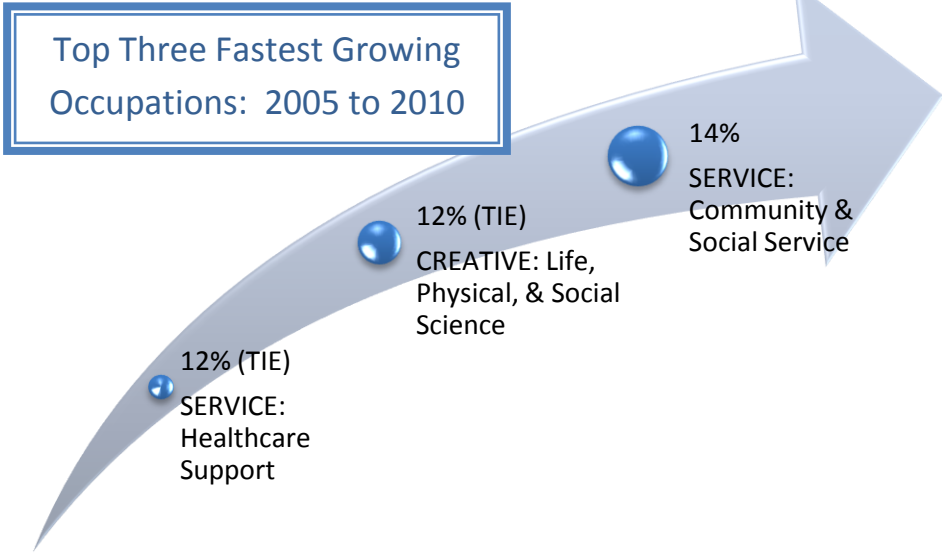
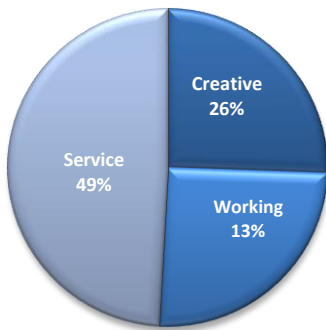


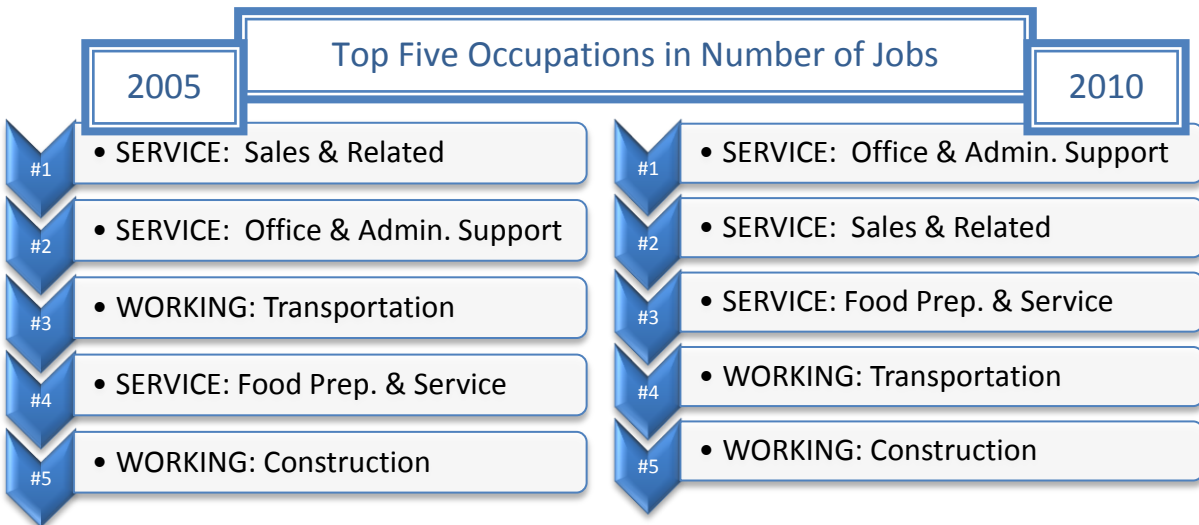
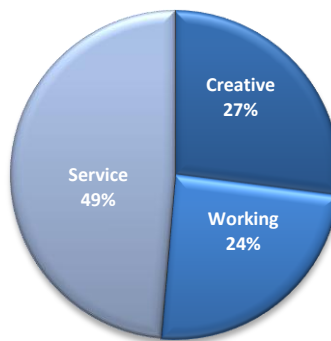
**New River Gorge Region  
West Virginia**



**Workers by Class: 2005**



**Workers by Class: 2010**



**Creative, Working & Service Classes**

## New River Gorge Region Data

CREATIVE CLASS: Occupations	2005 Jobs	2010 Jobs	Change	% Change	2010 Median Hourly Wage	2010 Avg Hourly Wage
Management occupations	4,700	5,067	367	8%	\$18.03	\$21.52
Business and financial operations occupations	1,953	2,082	129	7%	\$19.19	\$21.72
Computer and mathematical science occupations	359	379	20	6%	\$19.34	\$21.59
Architecture and engineering occupations	673	681	8	1%	\$25.40	\$27.61
Life, physical, and social science occupations	546	612	66	12%	\$19.54	\$23.22
Legal occupations	423	438	15	4%	\$19.86	\$23.29
Education, training, and library occupations	3,575	3,831	256	7%	\$22.96	\$23.77
Arts, design, entertainment, sports, and media occupations	1,025	1,064	39	4%	\$9.97	\$13.64
Healthcare practitioners and technical occupations	4,350	4,609	259	6%	\$26.23	\$27.94
<b>Total</b>	<b>17,605</b>	<b>18,763</b>	<b>1,158</b>	<b>7%</b>	<b>\$21.11</b>	<b>\$23.45</b>
WORKING CLASS: Occupations	2005 Jobs	2010 Jobs	Change	% Change	2010 Median Hourly Wage	2010 Avg Hourly Wage
Construction and extraction occupations	5,176	5,197	21	0%	\$17.62	\$19.55
Installation, maintenance, and repair occupations	3,411	3,311	(100)	(3%)	\$14.78	\$16.18
Production occupations	3,172	2,979	(193)	(6%)	\$13.89	\$14.89
Transportation and material moving occupations	5,678	5,382	(296)	(5%)	\$12.93	\$14.93
<b>Total</b>	<b>17,437</b>	<b>16,869</b>	<b>(568)</b>	<b>(3%)</b>	<b>\$14.91</b>	<b>\$16.59</b>
SERVICE CLASS: Occupations	2005 Jobs	2010 Jobs	Change	% Change	2010 Median Hourly Wage	2010 Avg Hourly Wage
Community and social services occupations	1,044	1,195	151	14%	\$11.86	\$12.74
Healthcare support occupations	2,059	2,302	243	12%	\$10.61	\$11.51
Protective service occupations	1,044	1,139	95	9%	\$12.27	\$13.83
Food preparation and serving related occupations	5,218	5,552	334	6%	\$8.02	\$8.65
Building and grounds cleaning and maintenance occupations	2,384	2,435	51	2%	\$8.95	\$9.54
Personal care and service occupations	2,613	2,785	172	7%	\$8.49	\$9.58
Sales and related occupations	9,762	9,059	(703)	(7%)	\$9.89	\$12.23
Office and administrative support occupations	9,717	9,251	(466)	(5%)	\$11.54	\$12.71
<b>Total</b>	<b>33,841</b>	<b>33,719</b>	<b>(122)</b>	<b>0%</b>	<b>\$10.05</b>	<b>\$11.38</b>

Source: EMSI Complete Employment - 4th Quarter 2010

\*Does not include military or agriculture related occupations.

## West Virginia State Data

CREATIVE CLASS: Occupations	2005 Jobs	2010 Jobs	Change	% Change	2010 Median Hourly Wage	2010 Avg Hourly Wage
Management occupations	66,686	74,775	8,089	12%	\$17.34	\$21.47
Business and financial operations occupations	27,043	30,227	3,184	12%	\$19.17	\$22.05
Computer and mathematical science occupations	8,874	9,646	772	9%	\$24.02	\$26.05
Architecture and engineering occupations	9,822	10,254	432	4%	\$26.48	\$28.39
Life, physical, and social science occupations	7,510	8,653	1,143	15%	\$20.56	\$24.80
Legal occupations	7,186	7,682	496	7%	\$23.70	\$29.17
Education, training, and library occupations	44,028	46,944	2,916	7%	\$22.56	\$23.15
Arts, design, entertainment, sports, and media occupations	15,819	16,601	782	5%	\$10.90	\$14.79
Healthcare practitioners and technical occupations	49,399	53,568	4,169	8%	\$27.49	\$29.40
<b>Total</b>	<b>236,366</b>	<b>258,350</b>	<b>21,984</b>	<b>9%</b>	<b>\$21.10</b>	<b>\$23.84</b>
Management occupations	431,142	456,669	25,527	6%	\$24.99	\$29.71
Construction and extraction occupations	60,714	61,546	832	1%	\$17.14	\$19.36
Installation, maintenance, and repair occupations	41,299	40,406	(893)	(2%)	\$16.01	\$17.34
Production occupations	52,321	46,308	(6,013)	(11%)	\$14.82	\$15.93
Transportation and material moving occupations	66,917	62,616	(4,301)	(6%)	\$13.13	\$15.07
<b>Total</b>	<b>221,251</b>	<b>210,876</b>	<b>(10,375)</b>	<b>(5%)</b>	<b>\$15.23</b>	<b>\$16.95</b>
SERVICE CLASS: Occupations	2005 Jobs	2010 Jobs	Change	% Change	2010 Median Hourly Wage	2010 Avg Hourly Wage
Community and social services occupations	15,369	16,683	1,314	9%	\$12.32	\$13.22
Healthcare support occupations	24,041	26,701	2,660	11%	\$10.42	\$11.34
Protective service occupations	14,255	15,225	970	7%	\$13.78	\$14.69
Food preparation and serving related occupations	63,964	67,023	3,059	5%	\$8.42	\$9.01
Building and grounds cleaning and maintenance occupations	28,721	29,235	514	2%	\$8.79	\$9.51
Personal care and service occupations	31,619	33,835	2,216	7%	\$8.56	\$9.67
Sales and related occupations	107,536	104,013	(3,523)	(3%)	\$10.14	\$12.41
Office and administrative support occupations	128,859	126,667	(2,192)	(2%)	\$11.90	\$13.03
<b>Total</b>	<b>414,364</b>	<b>419,382</b>	<b>5,018</b>	<b>1%</b>	<b>\$10.41</b>	<b>\$11.68</b>

Source: EMSI Complete Employment - 4th Quarter 2010

\*Does not include military or agriculture related occupations.