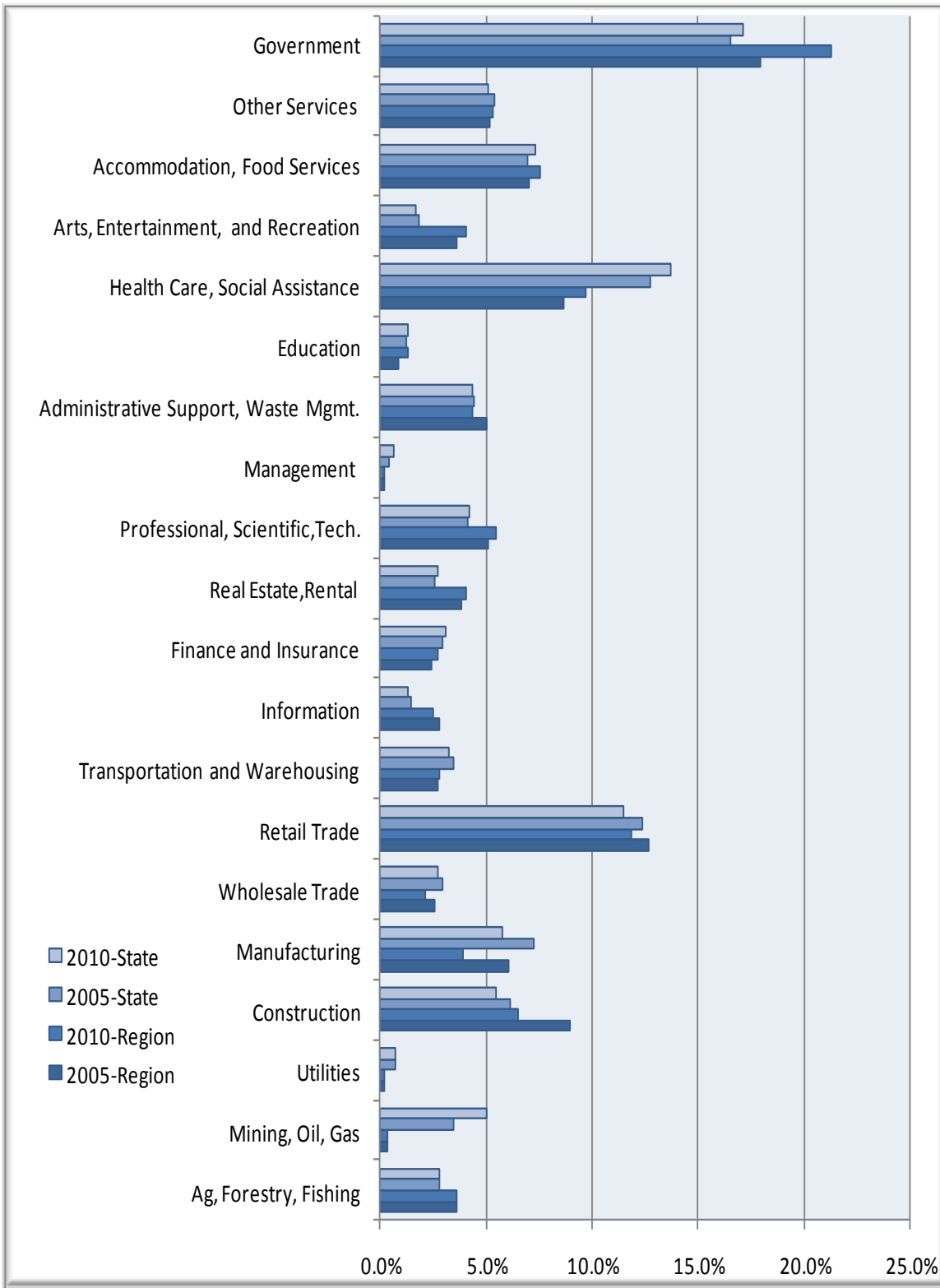


Businesses & Industries



Region 9 Regional Data

Industry Type	2005 Jobs	2010 Jobs	Change	% Change	2010 Total Earnings per Worker	2010 Establishments
Agriculture, Forestry, Fishing and Hunting	2,573	2,597	24	1%	\$22,337	46
Mining, Quarrying, and Oil and Gas Extraction	253	274	21	8%	\$60,658	7
Utilities	165	166	1	1%	\$121,606	5
Construction	6,326	4,697	(1,629)	(26%)	\$41,213	479
Manufacturing	4,293	2,833	(1,460)	(34%)	\$53,818	94
Wholesale Trade	1,813	1,540	(273)	(15%)	\$50,690	158
Retail Trade	8,983	8,542	(441)	(5%)	\$24,585	505
Transportation and Warehousing	1,942	2,032	90	5%	\$49,098	129
Information	1,985	1,787	(198)	(10%)	\$45,226	67
Finance and Insurance	1,740	1,986	246	14%	\$39,909	194
Real Estate and Rental and Leasing	2,690	2,945	255	9%	\$14,812	172
Professional, Scientific, and Technical Services	3,630	3,924	294	8%	\$55,783	407
Management of Companies and Enterprises	130	165	35	27%	\$59,136	15
Administrative and Support and Waste Management and Remediation Services	3,575	3,122	(453)	(13%)	\$20,827	230
Educational Services	597	969	372	62%	\$32,605	43
Health Care and Social Assistance	6,103	7,006	903	15%	\$44,240	306
Arts, Entertainment, and Recreation	2,554	2,908	354	14%	\$23,001	78
Accommodation and Food Services	4,991	5,438	447	9%	\$16,871	369
Other Services (except Public Administration)	3,640	3,846	206	6%	\$22,852	345
Government	12,717	15,348	2,631	21%	\$66,755	259
Total	70,700	72,124	1,424	2%	\$40,745	3,907

Source: EMSI Complete Employment - 4th Quarter 2010

West Virginia State Data

Industry Type	2005 Jobs	2010 Jobs	Change	% Change	2010 Total Earnings per Worker	2010 Establishments
Agriculture, Forestry, Fishing and Hunting	24,650	25,348	698	3%	\$22,328	452
Mining, Quarrying, and Oil and Gas Extraction	30,851	45,473	14,622	47%	\$74,895	927
Utilities	6,262	6,331	69	1%	\$103,793	230
Construction	54,297	49,299	(4,998)	(9%)	\$48,131	5,085
Manufacturing	64,300	52,415	(11,885)	(18%)	\$62,364	1,410
Wholesale Trade	26,243	24,450	(1,793)	(7%)	\$57,302	2,793
Retail Trade	109,820	103,750	(6,070)	(6%)	\$26,298	6,891
Transportation and Warehousing	30,963	29,099	(1,864)	(6%)	\$56,144	2,184
Information	13,260	11,962	(1,298)	(10%)	\$48,653	662
Finance and Insurance	26,422	28,149	1,727	7%	\$44,990	2,376
Real Estate and Rental and Leasing	22,811	24,864	2,053	9%	\$21,368	1,633
Professional, Scientific, and Technical Services	36,952	38,179	1,227	3%	\$52,875	3,940
Management of Companies and Enterprises	3,879	5,626	1,747	45%	\$72,669	310
Administrative and Support and Waste Management and Remediation Services	39,237	39,504	267	1%	\$25,732	2,301
Educational Services	11,049	11,889	840	8%	\$26,320	284
Health Care and Social Assistance	112,671	123,640	10,969	10%	\$45,150	4,860
Arts, Entertainment, and Recreation	16,202	15,174	(1,028)	(6%)	\$19,323	925
Accommodation and Food Services	61,562	66,260	4,698	8%	\$17,045	3,556
Other Services (except Public Administration)	48,134	46,348	(1,786)	(4%)	\$23,769	4,319
Government	146,309	154,800	8,491	6%	\$55,988	3,255
Total	885,874	902,559	16,685	2%	\$43,148	48,394

Source: EMSI Complete Employment - 4th Quarter 2010