



# REGIONAL SNAPSHOT

Mount Rogers Region, Virginia



## Table of contents

**01** Overview

**02** Industry Cluster Analysis

# 01 overview

Mount Rogers Region, VA

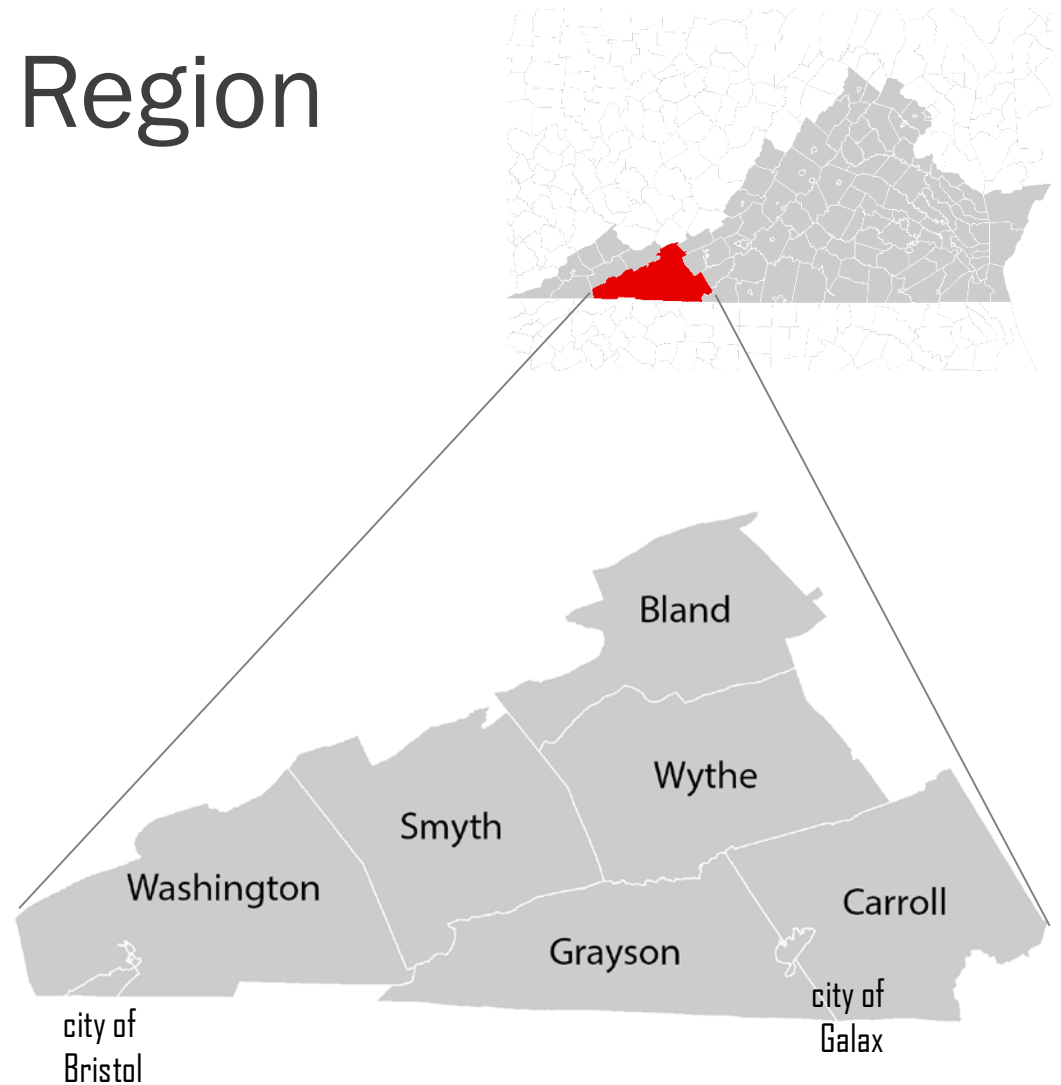
---

## Overview

# Mount Rogers Region

The Mount Rogers Region is comprised of six Virginia counties and two cities. Interstate I-81 passes through the central part of the region.

- Bland
- Carroll
- Grayson
- Smyth
- Washington
- Wythe Counties
- city of Bristol
- city of Galax



# 02 Industry cluster analysis

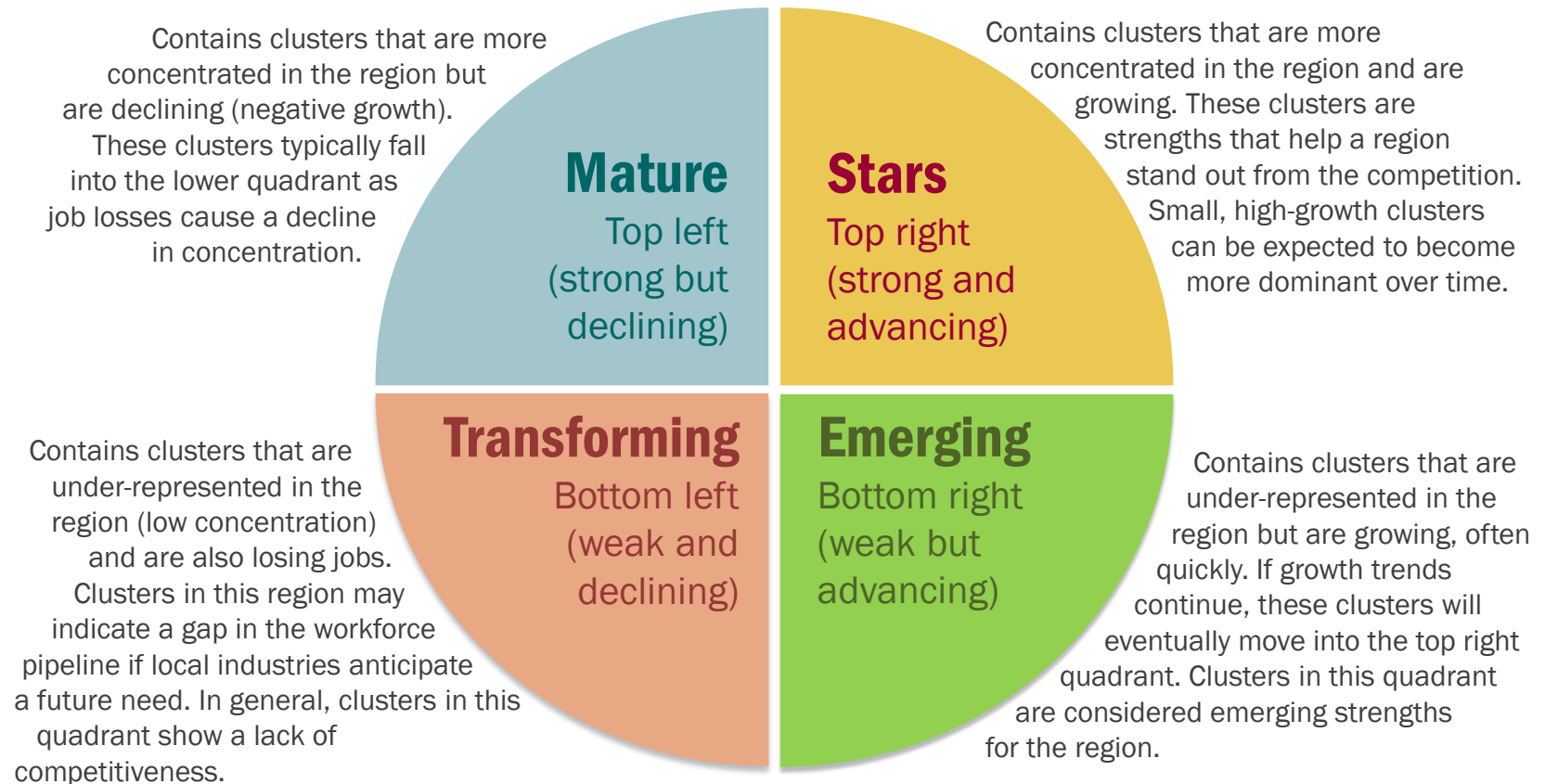
Mount Rogers Region, VA

---

## Industry cluster analysis

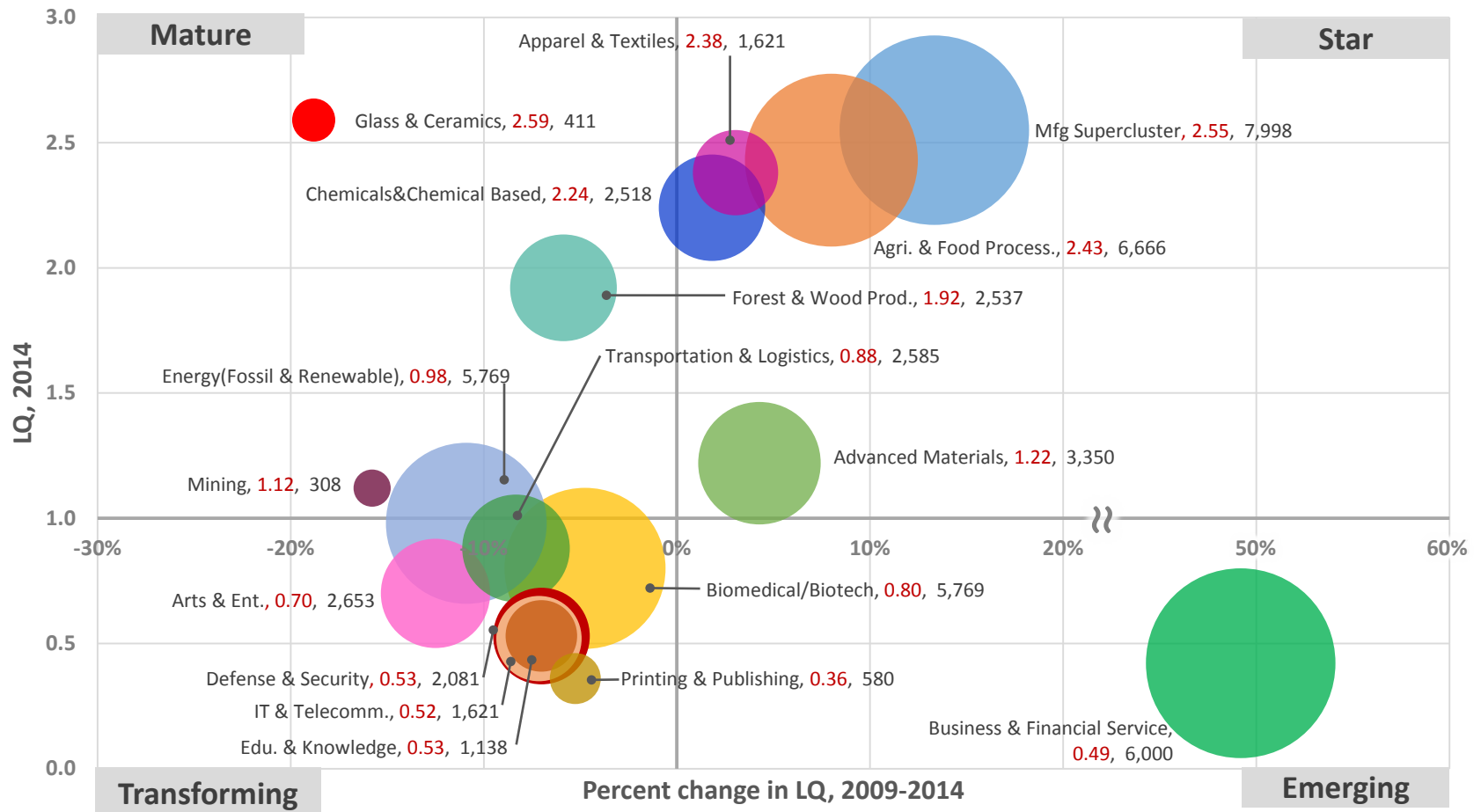
# How to interpret cluster data results

The graph's four quadrants tell a different story for each cluster.



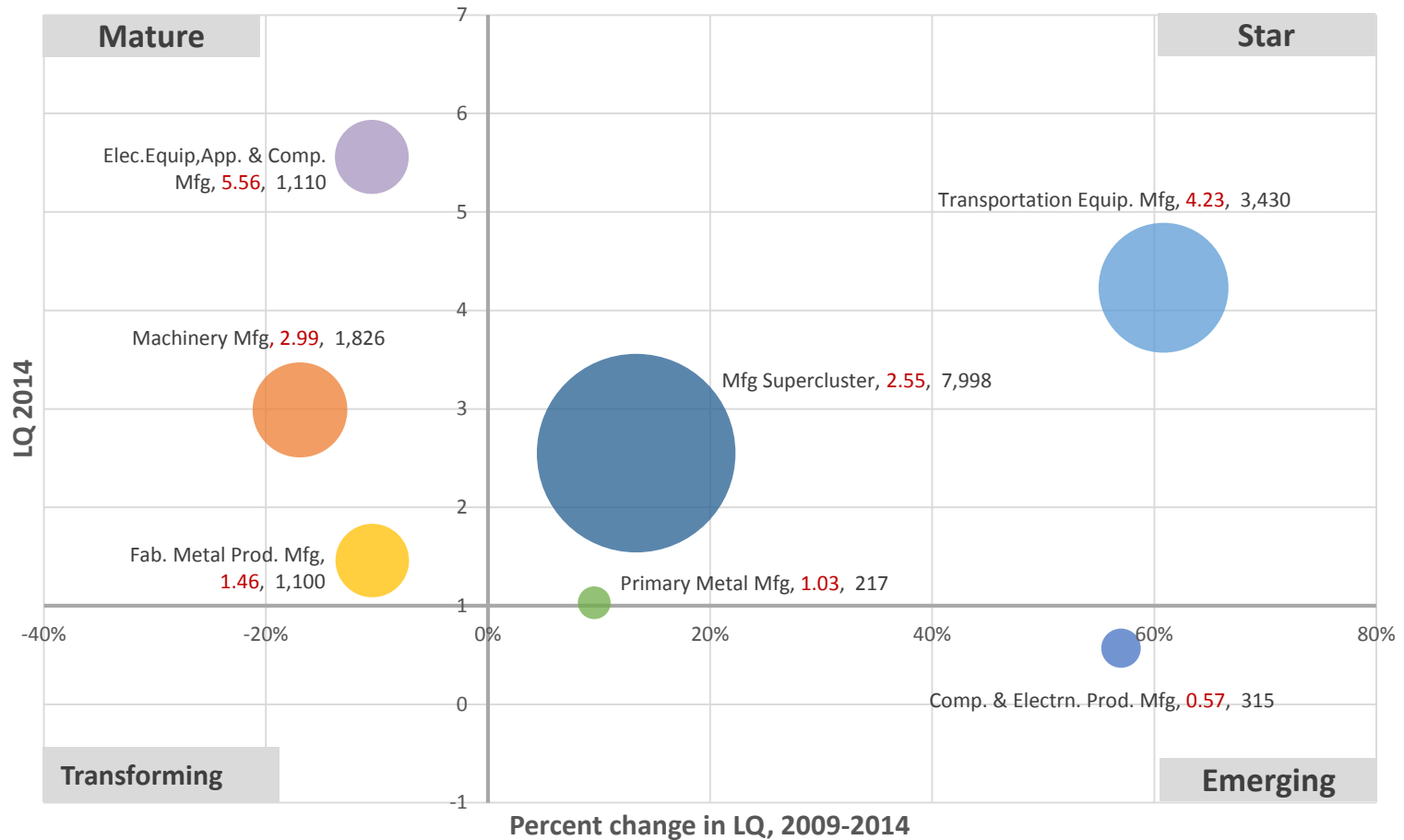
## Industry and occupation

# Industry cluster bubble chart



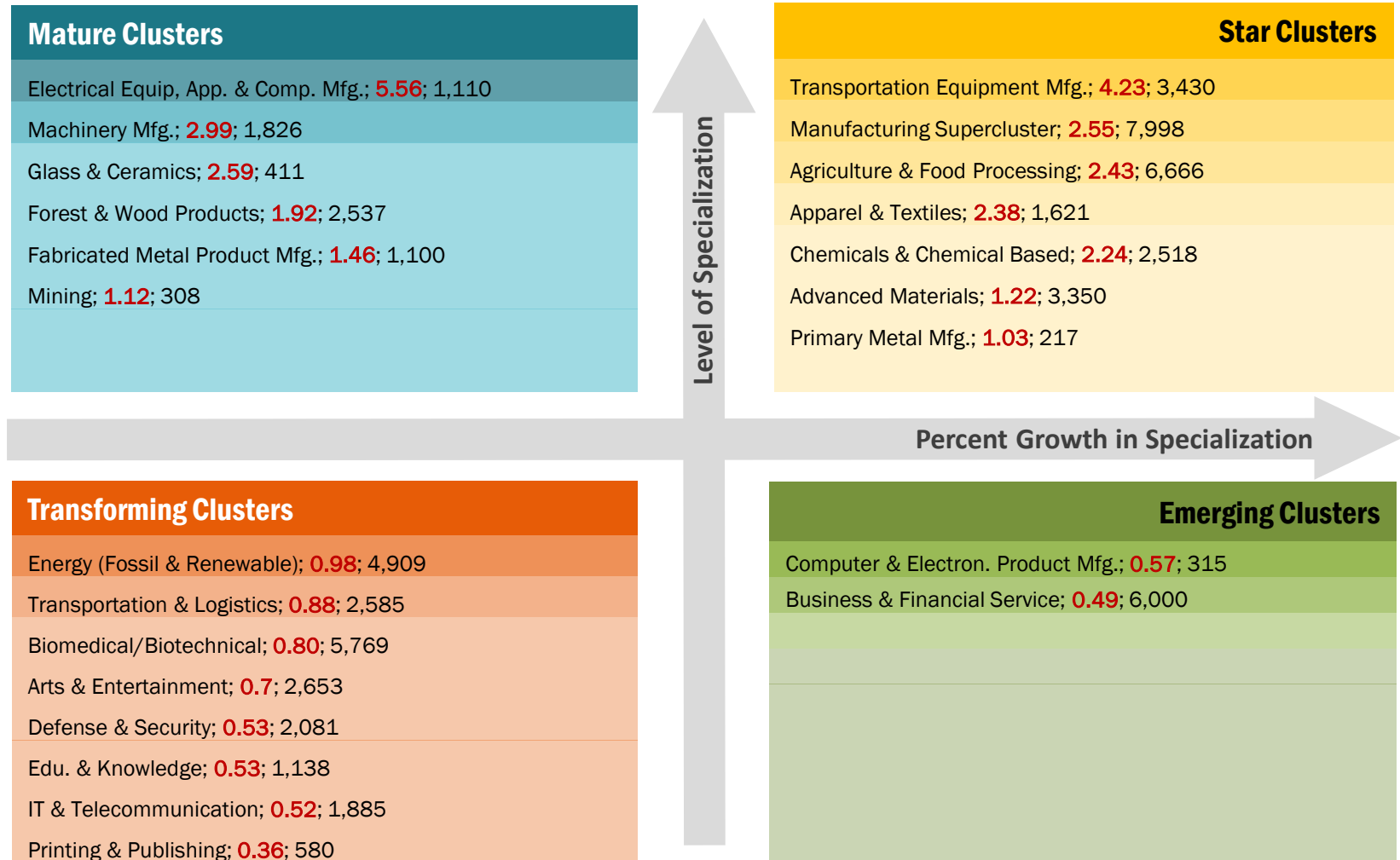
## Industry and occupation

# Manufacturing sub-cluster bubble chart





## Industry cluster analysis



### section 02

NOTE: The first number after each cluster represents its location quotient while the second number represents the number of total jobs (full and part time jobs by place of work) in that cluster in the region in 2014. The clusters are sorted in decreasing order by location quotient.

## Industry and occupation

# Bubble chart interpretation

### Mature Industries

Six industry clusters in the Mount Rogers Region are in the Maturing stage: Electrical Equip, App. & Comp. Manufacturing, Machinery Manufacturing, Glass & Ceramics, Forest & Wood Products, Fabricated Metal Product Manufacturing and Mining. These industries are relatively concentrated, but their growth is trending downward. It is worth noting, however, that the Mount Rogers Region may find it worthwhile to invest in efforts to shore up the concentration of these industries.

### Transforming Industries

Transforming clusters capture the mix of industries that are experiencing relative decline and limited export capability. In the Mount Rogers Region, Energy (Fossil & Renewable), Transportation & Logistics, Biomedical/Biotechnical, Arts & Entertainment, Defense & Security, Edu. & Knowledge, IT & Telecommunications and Printing & Publishing, are all Transforming clusters. Any amount of growth in these industries would require relatively large investments.

### Star Industries

Star industry clusters are highly concentrated, exporting and still experiencing growth in the region. The most highly concentrated of the Star industry clusters in the Mount Rogers Region is Transportation Equipment Manufacturing. Its location quotient is 4.23, indicating that the cluster is 4 times more concentrated in the region compared to the U.S. The other strong clusters in the region are Manufacturing Supercluster, Agribusiness & Food Processing, Apparel & Textiles, Chemicals & Chemical Based, Advanced Materials and Primary Metal Manufacturing.

### Emerging Industries

Industry clusters that may be poised for future growth are classified as “Emerging.” There are two Emerging clusters in the Mount Rogers Region. Computer & Electronic Product Manufacturing and Business & Financial Service.